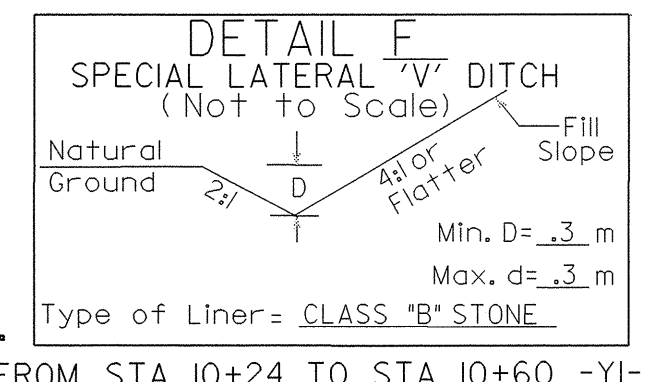


8/17/2015

2: DEC-2004 09:33:00 PS16.dgn

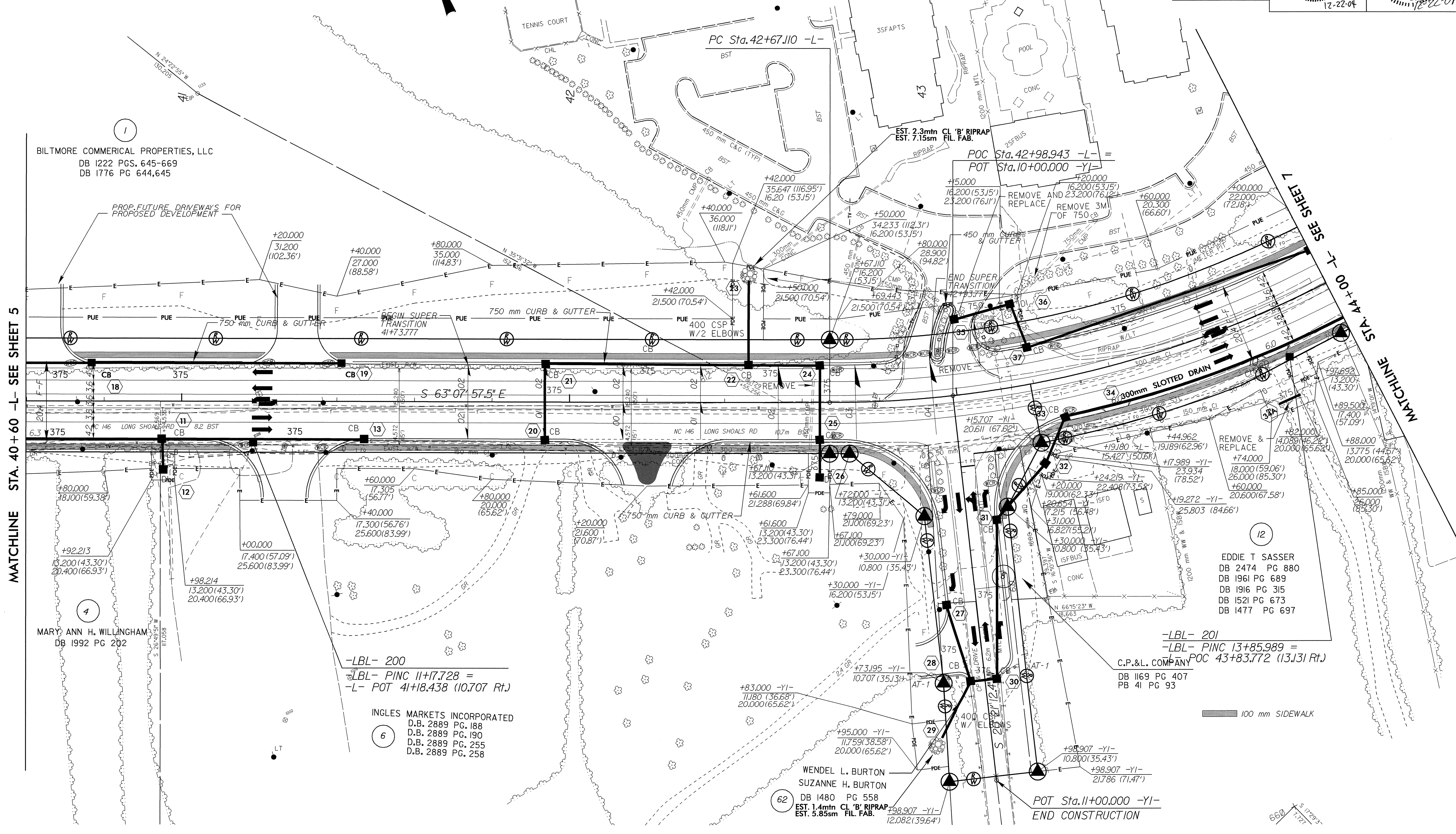
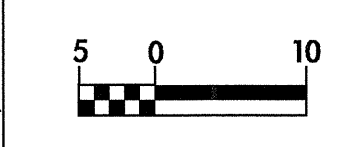
FOR PROFILE OF -L- SEE SHEETS NO. 15 & 16
 FOR PROFILE OF -YI- SEE SHEET NO. 23
 FOR INTERSECTION DETAIL OF -YI- SEE SHEET NO. 2-E

PROJECT REFERENCE NO. R-2813C		SHEET NO. 6	
R/W SHEET NO. 6		HYDRAULICS ENGINEER	
ROADWAY DESIGN ENGINEER		NORTH CAROLINA PROFESSIONAL ENGINEER SEAL 128908 GREGORY E. BROWN 12-22-04	
CONST. REV.		NORTH CAROLINA PROFESSIONAL ENGINEER SEAL 20870 MARC T. SHOWN 12-22-04	
R/W REV.			



THE FOREST AT ASHEVILLE PROPERTIES, LLC.
 DB 2077 PG 484
 FROM STA 10+24 TO STA 10+60 -YI- LT

-L-
 PI Sta. 43+53.468
 $\Delta = 34'16''54.1'' (LT)$
 $L = 167.532$
 $T = 86.358$
 $R = 280.000$
 $SE = 0.04 \text{ m/m}$
 $R.O. = 80 \text{ m}$



BILTMORE COMMERCIAL PROPERTIES, LLC
 DB I222 PGS. 645-669
 DB I776 PG 644,645

MARY ANN H. WILLINGHAM
 DB 1992 PG 202

INGLES MARKETS INCORPORATED
 D.B. 2889 PG. 188
 D.B. 2889 PG. 190
 D.B. 2889 PG. 255
 D.B. 2889 PG. 258

WENDEL L. BURTON
 SUZANNE H. BURTON
 DB 1480 PG 558
 EST. 1.4min CL 'B' RIPRAP
 EST. 5.85sm FIL. FAB.

EDDIE T SASSER
 DB 2474 PG 880
 DB 1961 PG 689
 DB 1916 PG 315
 DB 1521 PG 673
 DB 1477 PG 697

-LBL- 201
 -LBL- PINC 13+85.989 =
 C.P.&L. COMPANY
 DB 1169 PG 407
 PB 41 PG 93

POT Sta. 11+00.000 -YI-
 END CONSTRUCTION

