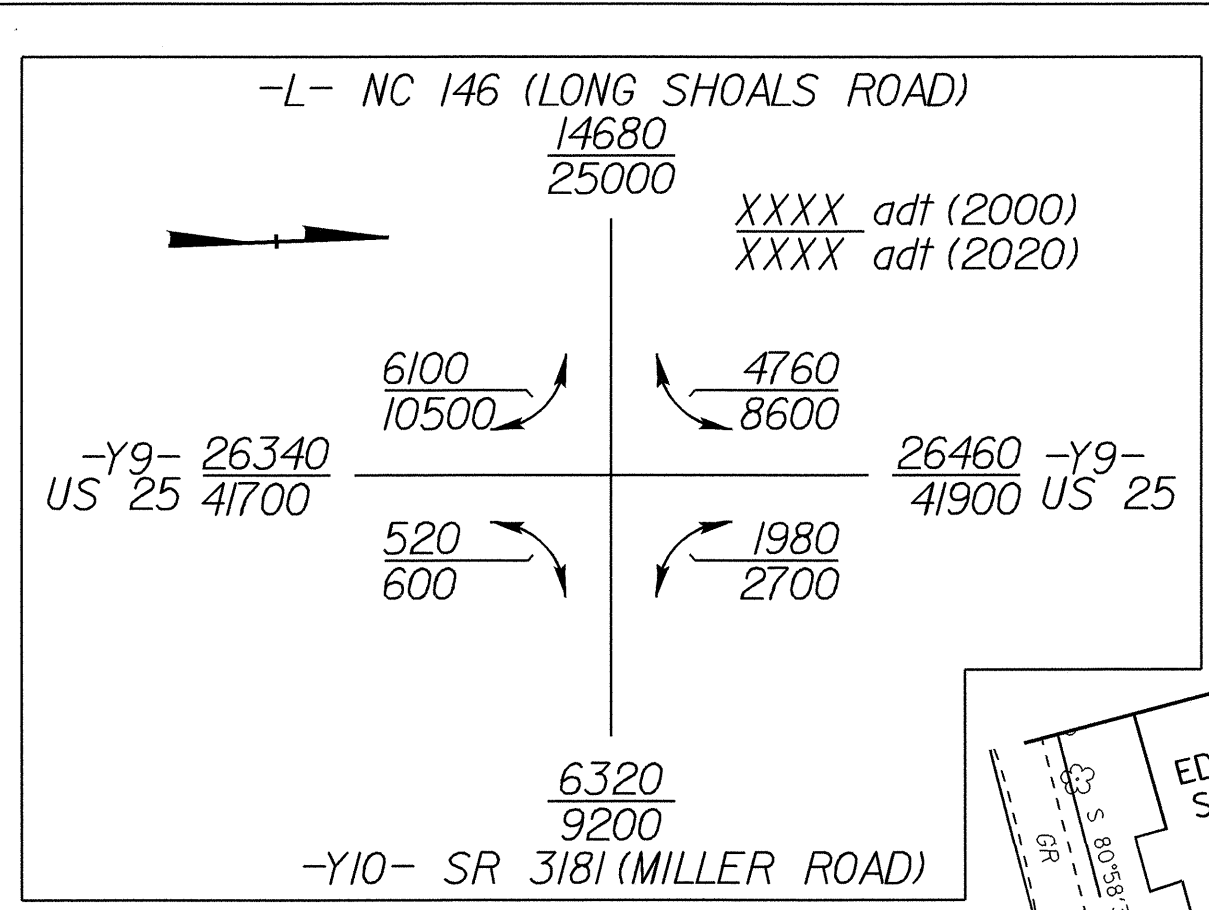
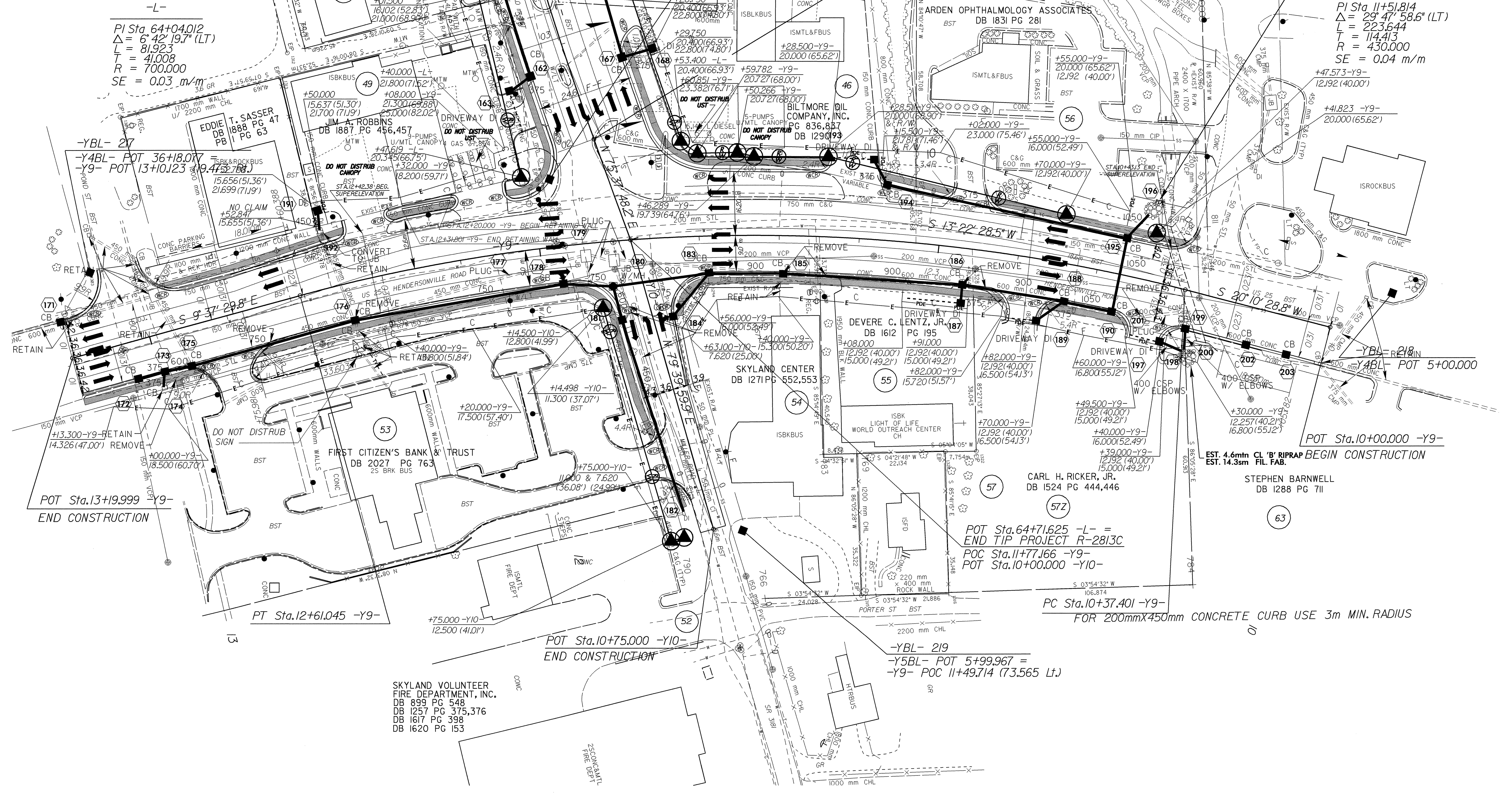


8/17/99



- R/W ACQUIRED VIA ADVANCE ACQUISITION IN 2000
- RETAIN THE TCE ACQUIRED VIA ADVANCE ACQUISITION IN 2000
- ADDITIONAL R/W PURCHASED IN 2003
- REQUIRED PUE AREA

	PROJECT REFERENCE NO.	R-2813C	SHEET NO.	13
	R/W SHEET NO.	13		
	ROADWAY DESIGN ENGINEER	NORTH CAROLINA PROFESSIONAL ENGINEER SEAL 68903 GREGORY E. BRYN		
	HYDRAULICS ENGINEER	NORTH CAROLINA PROFESSIONAL ENGINEER SEAL 20870 WANC T. SHOWN		
CONST. REV.	12-22-04			
R/W REV.	12-22-04			



2-DEC-2004 09:27  
R:\proj\11-2813C\11-2813C.dgn  
p:\proj\11-2813C\11-2813C.dgn