

-Y5-
PI Sta 10+61.038
 $\Delta = 27^{\circ}05'50.6''$ (RT)
L = 37.835
T = 19.278
R = 80.000

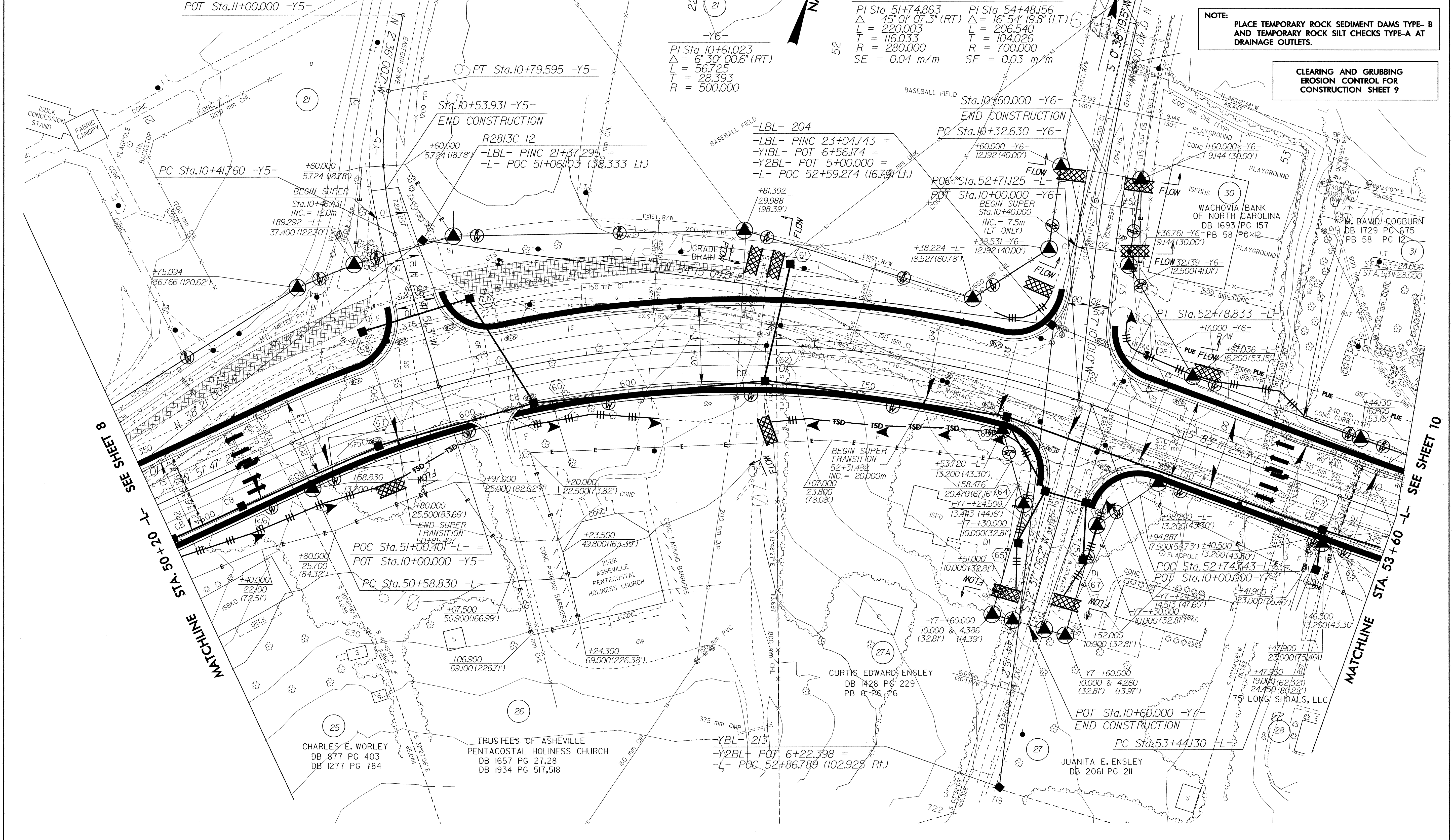
BUNCOMBE COUNTY
BOARD OF EDUCATION
DB 296 PG 186
DB 300 PG 570 .571
DB 304 PG 527
DB 962 PG 615.616
DB 762 PG 645

FOR PROFILE OF -L- SEE SHEETS NO. 18 & 19
FOR PROFILES OF -Y5- -Y6- & -Y7- SEE SHEET NO. 24
FOR INTERSECTION DETAIL OF -Y5- SEE SHEET NO. 26
FOR INTERSECTION DETAILS OF -Y6- & -Y7- SEE SHEET NO. 21

PROJECT REFERENCE NO. R-2813C		SHEET NO. EC-8/CONST.9	
R/W SHEET NO. 9		ROADWAY DESIGN ENGINEER	
CONST.REV.		HYDRAULICS ENGINEER	
R/W REV.			

NOTE: PLACE TEMPORARY ROCK SEDIMENT DAMS TYPE-B AND TEMPORARY ROCK SILT CHECKS TYPE-A AT DRAINAGE OUTLETS.

CLEARING AND GRUBBING EROSION CONTROL FOR CONSTRUCTION SHEET 9



SEE SHEET 8
MATCHLINE STA 50+20 -L-

SEE SHEET 10
MATCHLINE STA. 53+60 -L-