


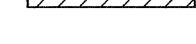
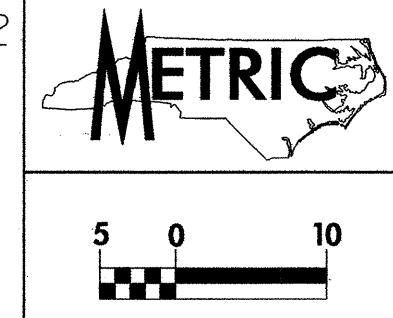


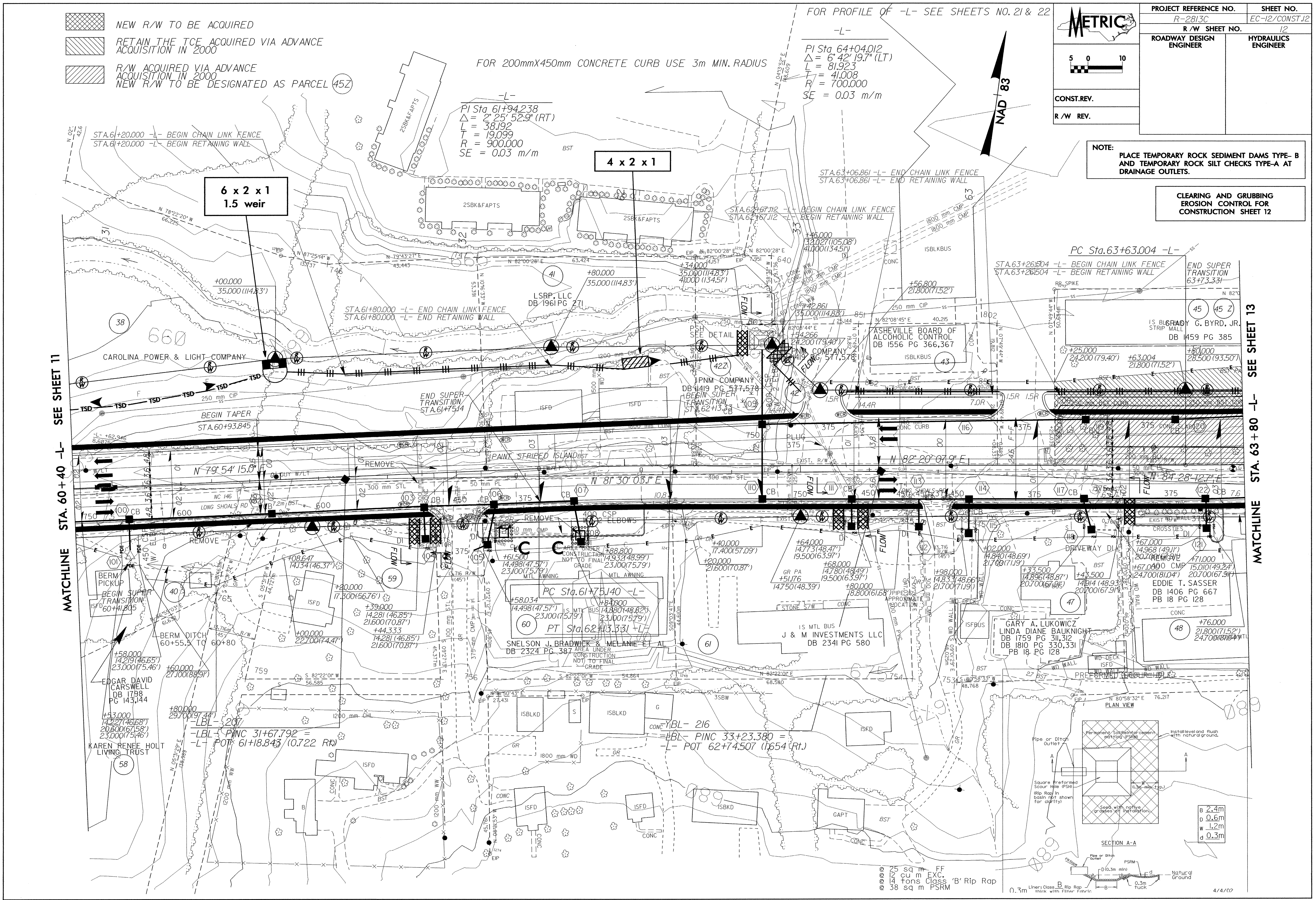
-  NEW R/W TO BE ACQUIRED
-  RETAIN THE TCF ACQUIRED VIA ADVANCE ACQUISITION IN 2000
-  R/W ACQUIRED VIA ADVANCE ACQUISITION IN 2000
-  NEW R/W TO BE DESIGNATED AS PARCEL (45Z)



PROJECT REFERENCE NO. R-2813C	SHEET NO. EC-12/CONST12
R/W SHEET NO. 12	
ROADWAY DESIGN ENGINEER	HYDRAULICS ENGINEER
CONST. REV.	
R/W REV.	

NOTE: PLACE TEMPORARY ROCK SEDIMENT DAMS TYPE-B AND TEMPORARY ROCK SILT CHECKS TYPE-A AT DRAINAGE OUTLETS.

CLEARING AND GRUBBING EROSION CONTROL FOR CONSTRUCTION SHEET 12



MATCHLINE STA. 60+40 -L- SEE SHEET 11

MATCHLINE STA. 63+80 -L- SEE SHEET 13

FOR PROFILE OF -L- SEE SHEETS NO. 21 & 22  
-L-  
PI Sta. 64+04.012  
 $\Delta = 6' 42'' (19.7' (LT))$   
 $L = 81.923$   
 $T = 41.008$   
 $R = 700.000$   
 $SE = 0.03 \text{ m/m}$

FOR 200mmX450mm CONCRETE CURB USE 3m MIN. RADIUS  
-L-  
PI Sta. 61+94.238  
 $\Delta = 2' 25'' 52.9' (RT)$   
 $L = 38.192$   
 $T = 19.099$   
 $R = 900.000$   
 $SE = 0.03 \text{ m/m}$

STA. 61+20.000 -L- BEGIN CHAIN LINK FENCE  
STA. 61+20.000 -L- BEGIN RETAINING WALL

STA. 63+06.861 -L- END CHAIN LINK FENCE  
STA. 63+06.861 -L- END RETAINING WALL

STA. 61+80.000 -L- END CHAIN LINK FENCE  
STA. 61+80.000 -L- END RETAINING WALL

PC Sta. 63+63.004 -L-  
STA. 63+26.504 -L- BEGIN CHAIN LINK FENCE  
STA. 63+26.504 -L- BEGIN RETAINING WALL

END SUPER TRANSITION  
63+73.331

BEGIN TAPER  
STA. 60+93.845

END SUPER TRANSITION  
STA. 61+75.14

BEGIN SUPER TRANSITION  
STA. 62+13.28

END SUPER TRANSITION  
63+73.331

BEGIN SUPER TRANSITION  
60+41.805

BEGIN SUPER TRANSITION  
60+55.5 TO 60+80

BEGIN SUPER TRANSITION  
61+18.843 (0.722 RT)

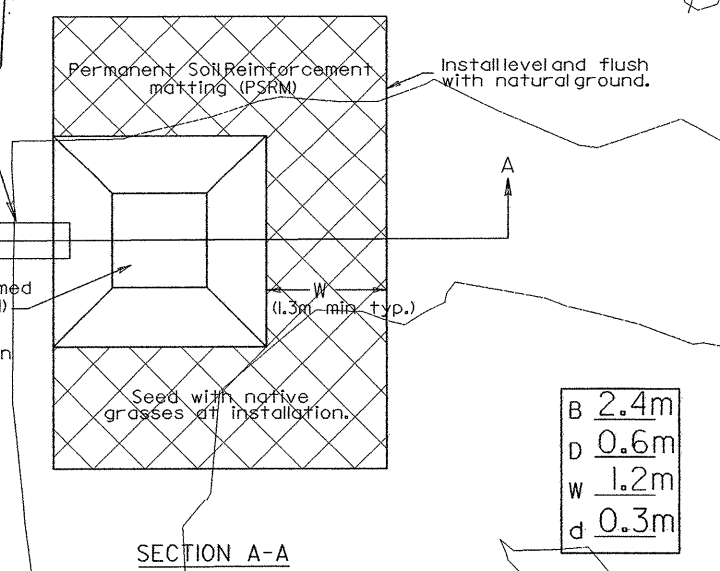
PC Sta. 61+75.140 -L-  
PT Sta. 62+13.331 -L-

SNELSON J. BRADY & MELANIE ET AL  
DB 2324 PG 387

J & M INVESTMENTS LLC  
DB 2341 PG 580

GARY A. LUKOWICZ  
LINDA DIANE BAUKNIGHT  
DB 1759 PG 311,312  
DB 1810 PG 330,331  
PB 18 PG 128

EDDIE T. SASSER  
DB 1406 PG 667  
PB 18 PG 128



- 25 sq m FF
- 12 cu m EXC.
- 14 tons Class 'B' Rip Rap
- 38 sq m PSRM