 CONST. REV.	PROJECT REFERENCE NO.	SHEET NO.
	R-2813C	EC-18/CONST.8
R/W REV.	R/W SHEET NO.	8
	ROADWAY DESIGN ENGINEER	HYDRAULICS ENGINEER

- L -

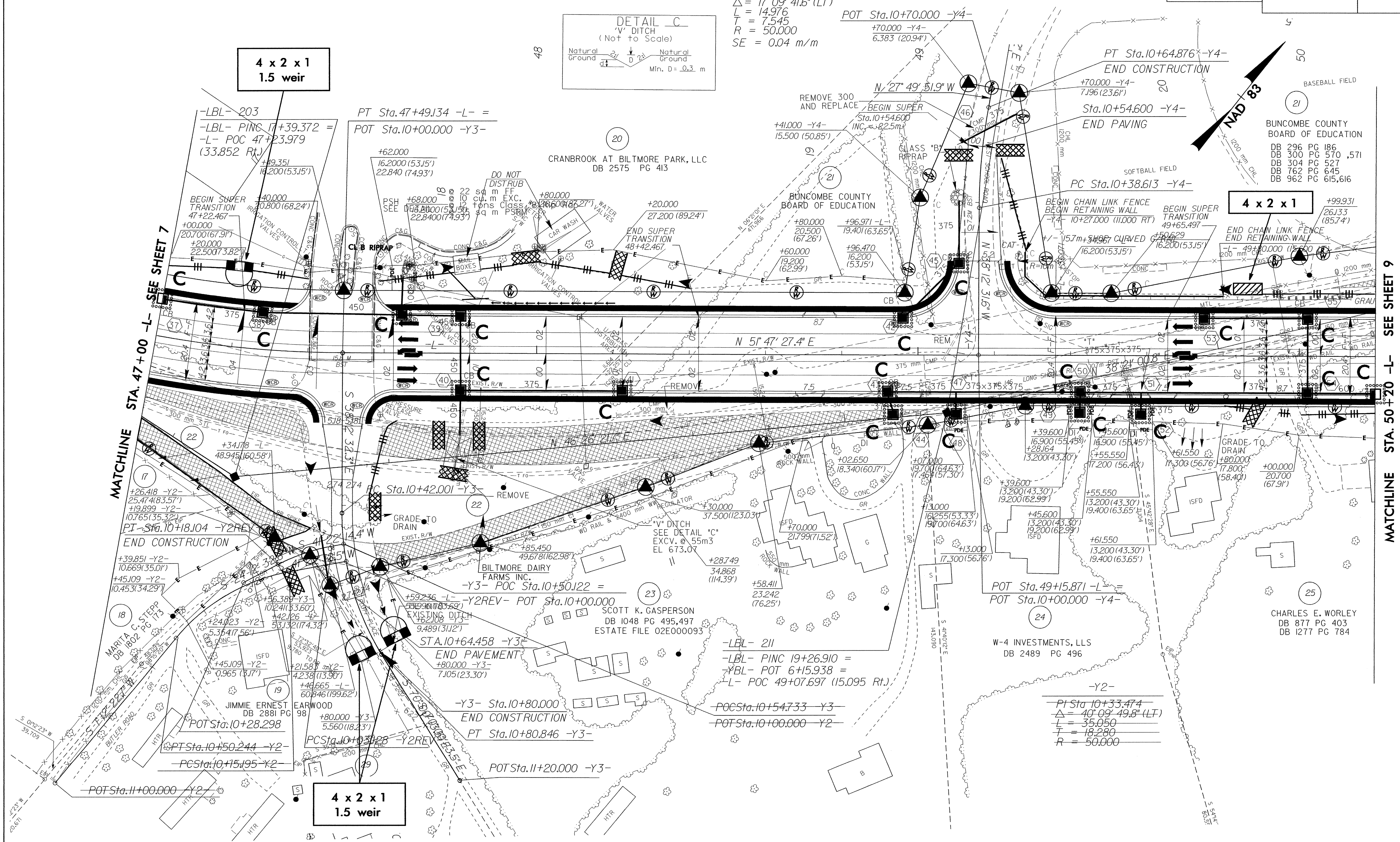
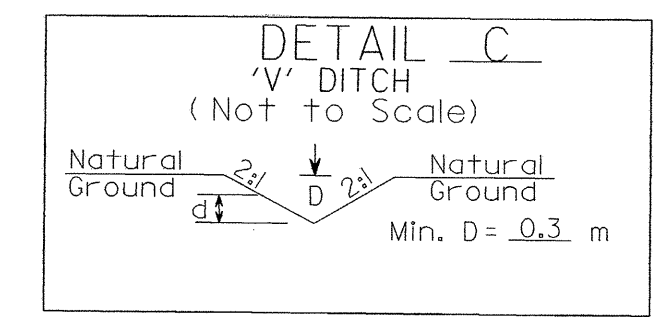
PI Sta 46+75.753  
 $\Delta = 30^{\circ} 47' 41.0''$  (LT)  
 L = 150.491  
 T = 77.111  
 R = 280.000  
 SE = 0.04 m/m

- Y3 -

PI Sta 10+61.938  
 $\Delta = 31^{\circ} 47' 41.2''$  (Li)  
 L = 38.845  
 T = 19.937  
 R = 70.000

- Y2REV -

PI Sta 10+10.672  
 $\Delta = 17^{\circ} 09' 41.6''$  (LT)  
 L = 14.976  
 T = 7.545  
 R = 50.000  
 SE = 0.04 m/m



MATCHLINE STA. 47+00 -L- SEE SHEET 7

MATCHLINE STA. 50+20 -L- SEE SHEET 9

4 x 2 x 1  
1.5 weir

4 x 2 x 1

4 x 2 x 1  
1.5 weir