

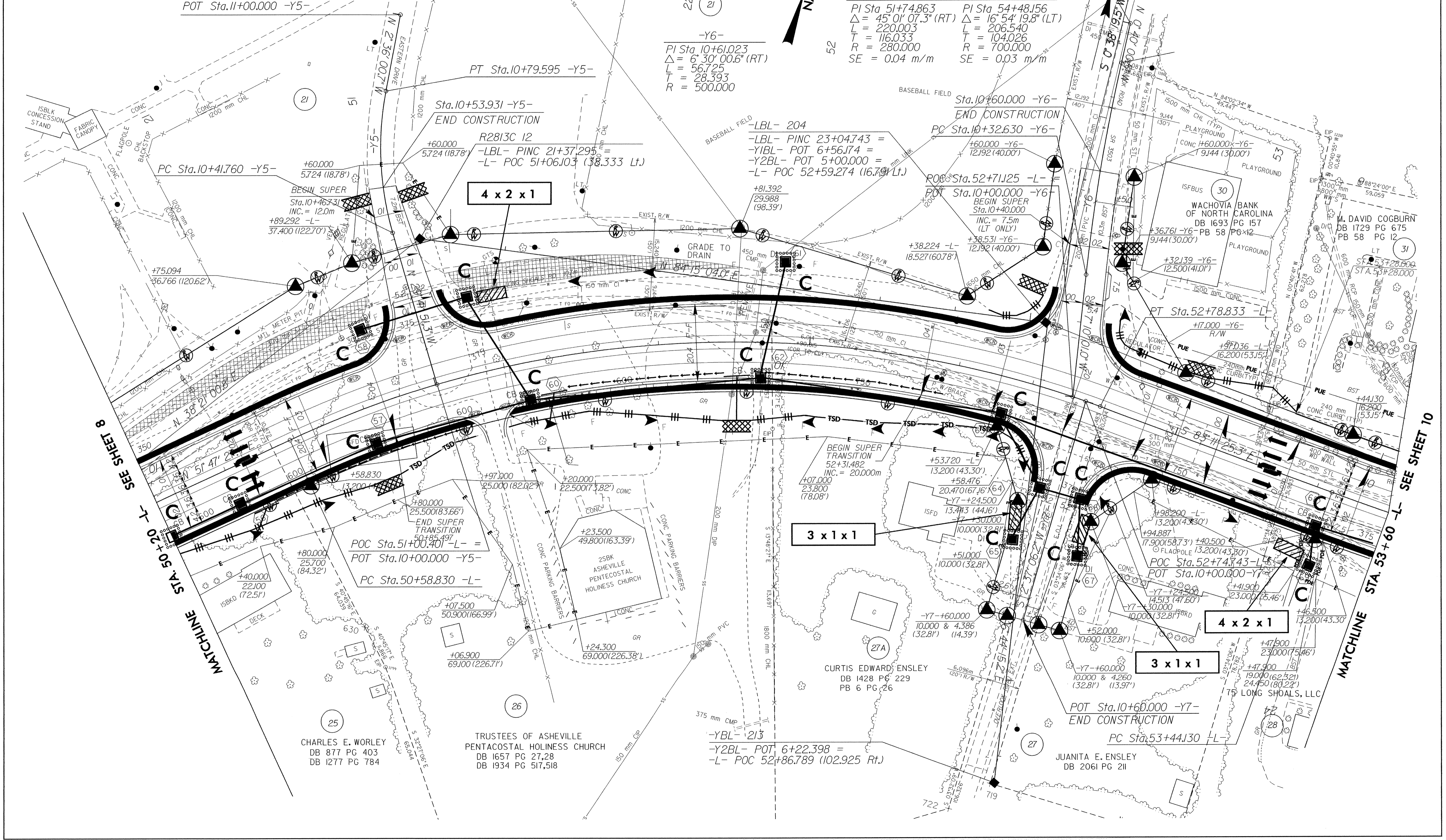
-Y5-
 PI Sta. 10+61.038
 $\Delta = 27^\circ 05' 50.6''$ (RT)
 $L = 37.835$
 $T = 19.278$
 $R = 80.000$

OBLITERATE & REMOVE

BUNCOMBE COUNTY
 BOARD OF EDUCATION
 DB 296 PG 186
 DB 300 PG 570, 571
 DB 304 PG 527
 DB 962 PG 615, 616
 DB 762 PG 645

FOR PROFILE OF -L- SEE SHEETS NO. 18 & 19
 FOR PROFILES OF -Y5-, -Y6- & -Y7- SEE SHEET NO. 24
 FOR INTERSECTION DETAIL OF -Y5- SEE SHEET NO. 2-G
 FOR INTERSECTION DETAILS OF -Y6- & -Y7- SEE SHEET NO. 2-H

| | | |
|-------------|-------------------------|---------------------|
| | PROJECT REFERENCE NO. | SHEET NO. |
| | R-2813C | EC-19/CONC.9 |
| | R/W SHEET NO. | 9 |
| | ROADWAY DESIGN ENGINEER | HYDRAULICS ENGINEER |
| CONST. REV. | | |
| R/W REV. | | |



SEE SHEET 8
 MATCHLINE STA. 50+20 -L-

SEE SHEET 10
 MATCHLINE STA. 53+60 -L-

CHARLES E. WORLEY
 DB 877 PG 403
 DB 1277 PG 784

TRUSTEES OF ASHEVILLE
 PENTECOSTAL HOLINESS CHURCH
 DB 1657 PG 27, 28
 DB 1934 PG 517, 518

-YBL- 213
 -Y2BL- POT 6+22.398 =
 -L- POC 52+86.789 (102.925 Rt.)

POT Sta. 10+60.000 -Y7-
 END CONSTRUCTION
 PC Sta. 53+44.130 -L-