

FOR PROFILE OF -L- SEE SHEETS NO. 20 & 21
 FOR PROFILE OF -Y8- SEE SHEET NO. 24
 FOR INTERSECTION DETAIL OF -Y8- SEE SHEET NO. 2-1

METRIC

PROJECT REFERENCE NO. R-2813C SHEET NO. EC-21/CONST.II

R/W SHEET NO. II

ROADWAY DESIGN ENGINEER HYDRAULICS ENGINEER

CONST. REV.

R/W REV.

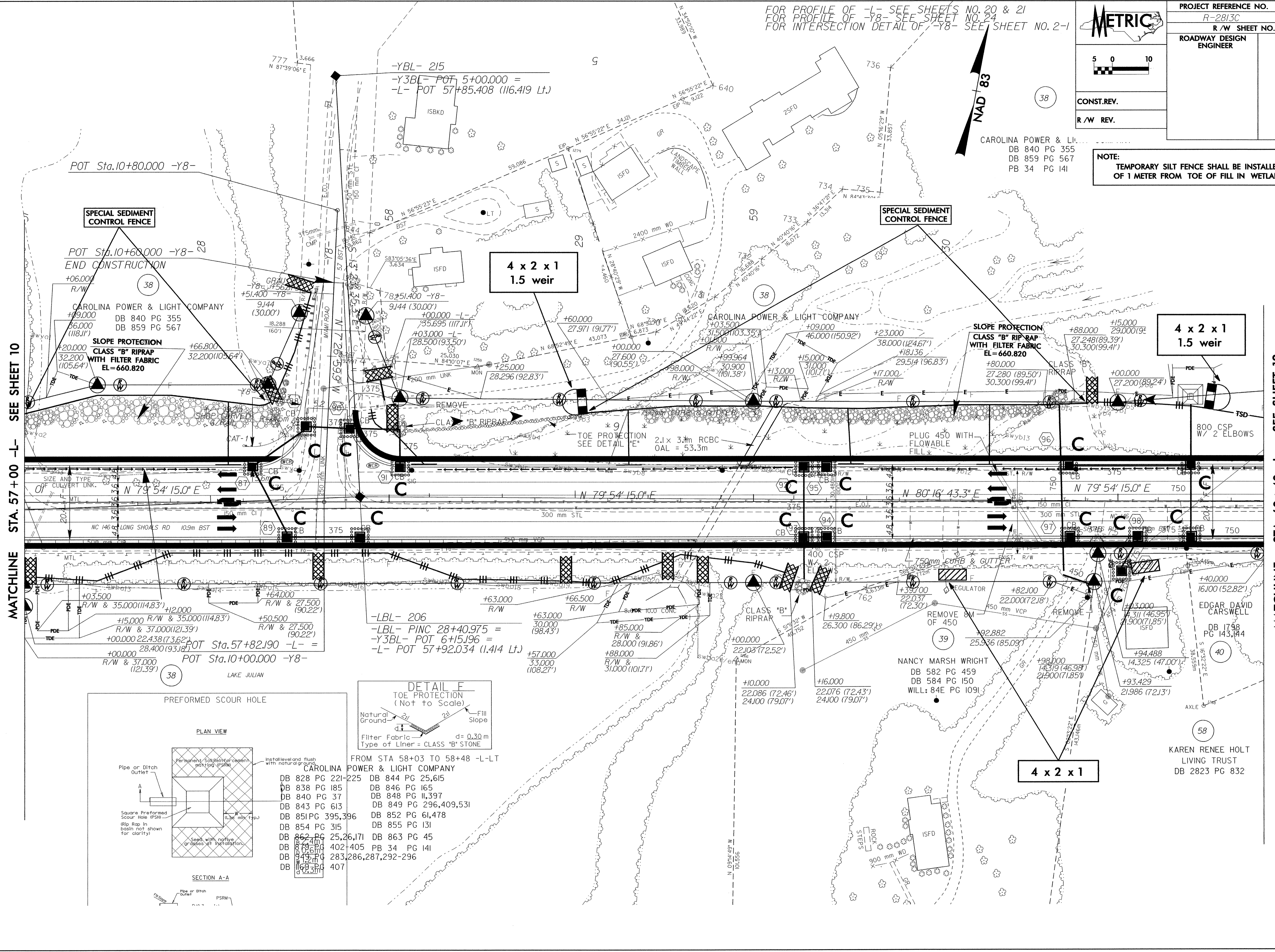
5 0 10

NAD 83

38

CAROLINA POWER & LIGHT COMPANY
 DB 840 PG 355
 DB 859 PG 567
 PB 34 PG 141

NOTE:
 TEMPORARY SILT FENCE SHALL BE INSTALLED A MINIMUM OF 1 METER FROM TOE OF FILL IN WETLAND AREAS



MATCHLINE STA. 57+00 -L- SEE SHEET 10

MATCHLINE STA. 60+40 -L- SEE SHEET 12

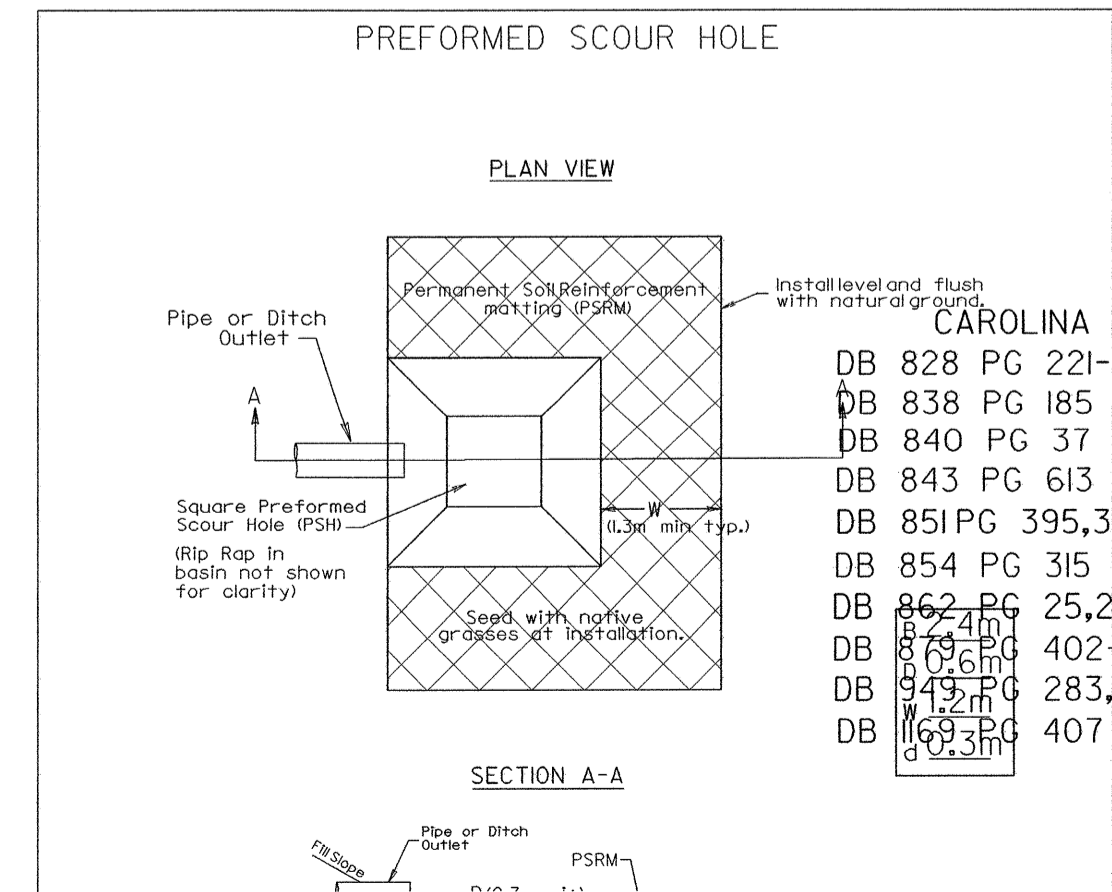
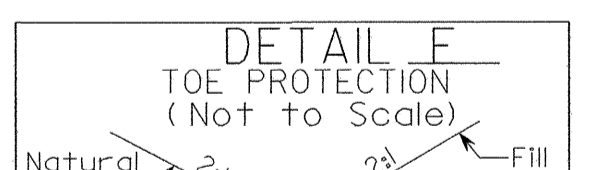
SPECIAL SEDIMENT CONTROL FENCE

**4 x 2 x 1
1.5 weir**

SPECIAL SEDIMENT CONTROL FENCE

**SLOPE PROTECTION
CLASS "B" RIPRAP
WITH FILTER FABRIC
EL=660.820**

**4 x 2 x 1
1.5 weir**



- FROM STA 58+03 TO 58+48 -L-LT
- | | | |
|--------------------------------|-------------------------------|-----------------------|
| CAROLINA POWER & LIGHT COMPANY | DB 828 PG 221-225 | DB 844 PG 25,615 |
| | DB 838 PG 185 | DB 846 PG 165 |
| | DB 840 PG 37 | DB 848 PG 11,397 |
| | DB 843 PG 613 | DB 849 PG 296,409,531 |
| | DB 851 PG 395,396 | DB 852 PG 61,478 |
| | DB 854 PG 315 | DB 855 PG 131 |
| | DB 862 PG 25,26,171 | DB 863 PG 45 |
| | DB 879 PG 402-405 | PB 34 PG 141 |
| | DB 949 PG 283,286,287,292-296 | |
| | DB 169 PG 407 | |

MATCHLINE STA. 57+00 -L- SEE SHEET 10

MATCHLINE STA. 60+40 -L- SEE SHEET 12