

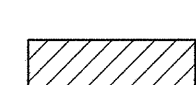
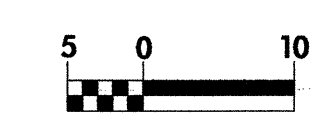


-  NEW R/W TO BE ACQUIRED
-  RETAIN THE TCE ACQUIRED VIA ADVANCE ACQUISITION IN 2000
-  R/W ACQUIRED VIA ADVANCE ACQUISITION IN 2000  
NEW R/W TO BE DESIGNATED AS PARCEL 45Z



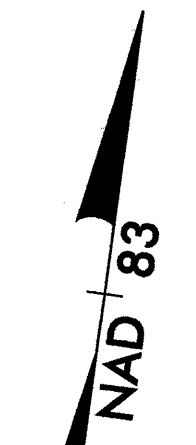
PROJECT REFERENCE NO.	R-2813C	SHEET NO.	EC-22/CONST.12
R/W SHEET NO.	12		
ROADWAY DESIGN ENGINEER		HYDRAULICS ENGINEER	
CONST. REV.			
R/W REV.			



FOR PROFILE OF -L- SEE SHEETS NO. 21 & 22

-L-

PI Sta. 64+04.012  
 $\Delta = 6' 42" 19.7" (LT)$   
 $L = 81.923$   
 $T = 41.008$   
 $R = 700.000$   
 $SE = 0.03 \text{ m/m}$



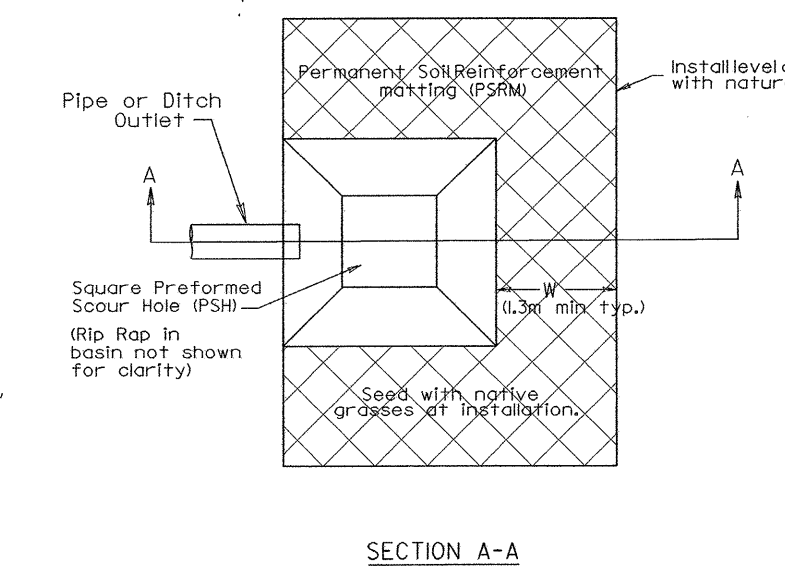
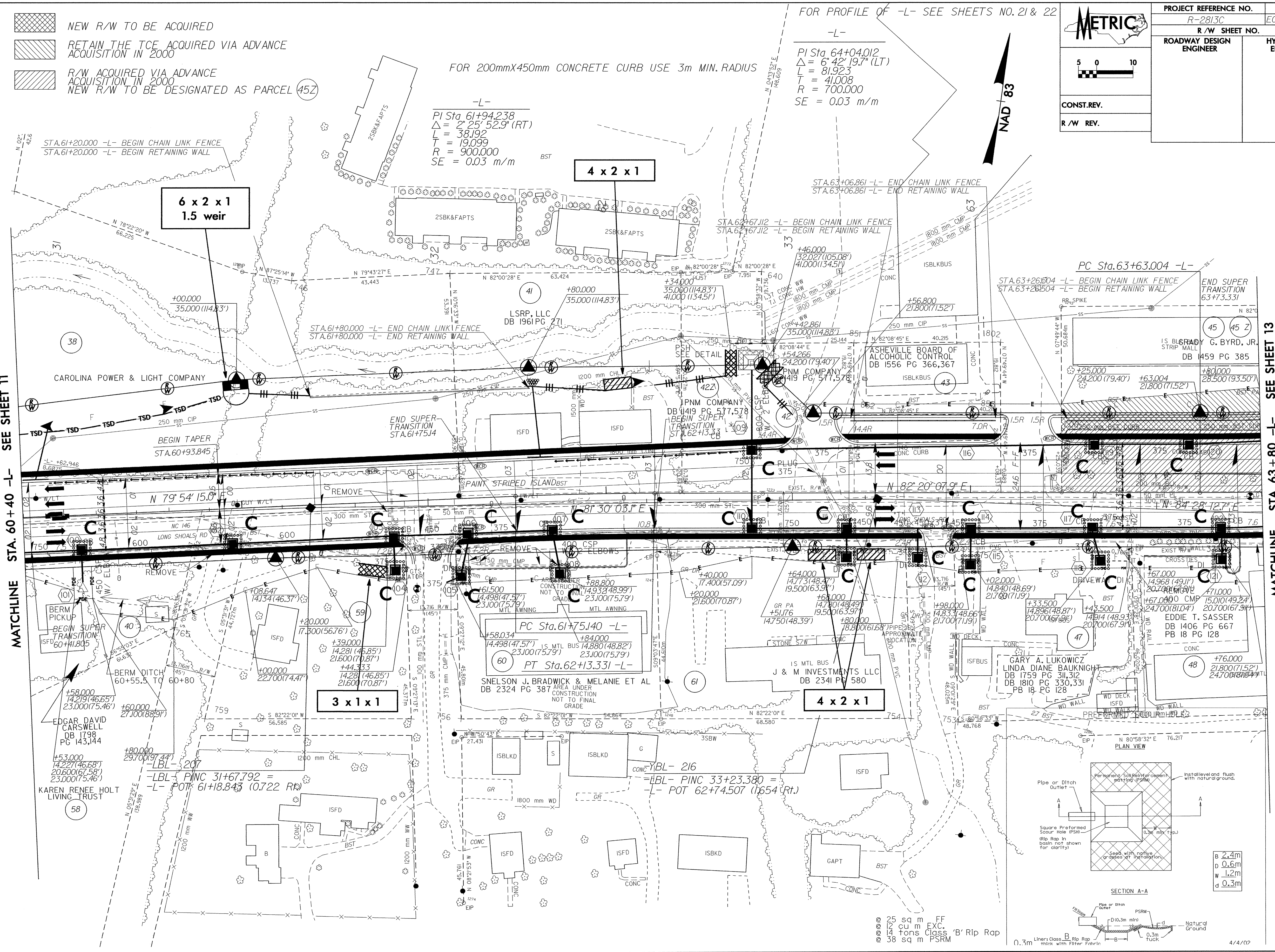
FOR 200mmX450mm CONCRETE CURB USE 3m MIN. RADIUS

-L-

PI Sta. 61+94.238  
 $\Delta = 2' 25" 52.9" (RT)$   
 $L = 38.192$   
 $T = 19.099$   
 $R = 900.000$   
 $SE = 0.03 \text{ m/m}$

MATCHLINE STA. 60+40 -L- SEE SHEET 11

MATCHLINE STA. 63+80 -L- SEE SHEET 13



- 25 sq m FF
- 12 cu m EXC.
- 14 tons CLASS 'B' Rip Rap
- 38 sq m PSRM