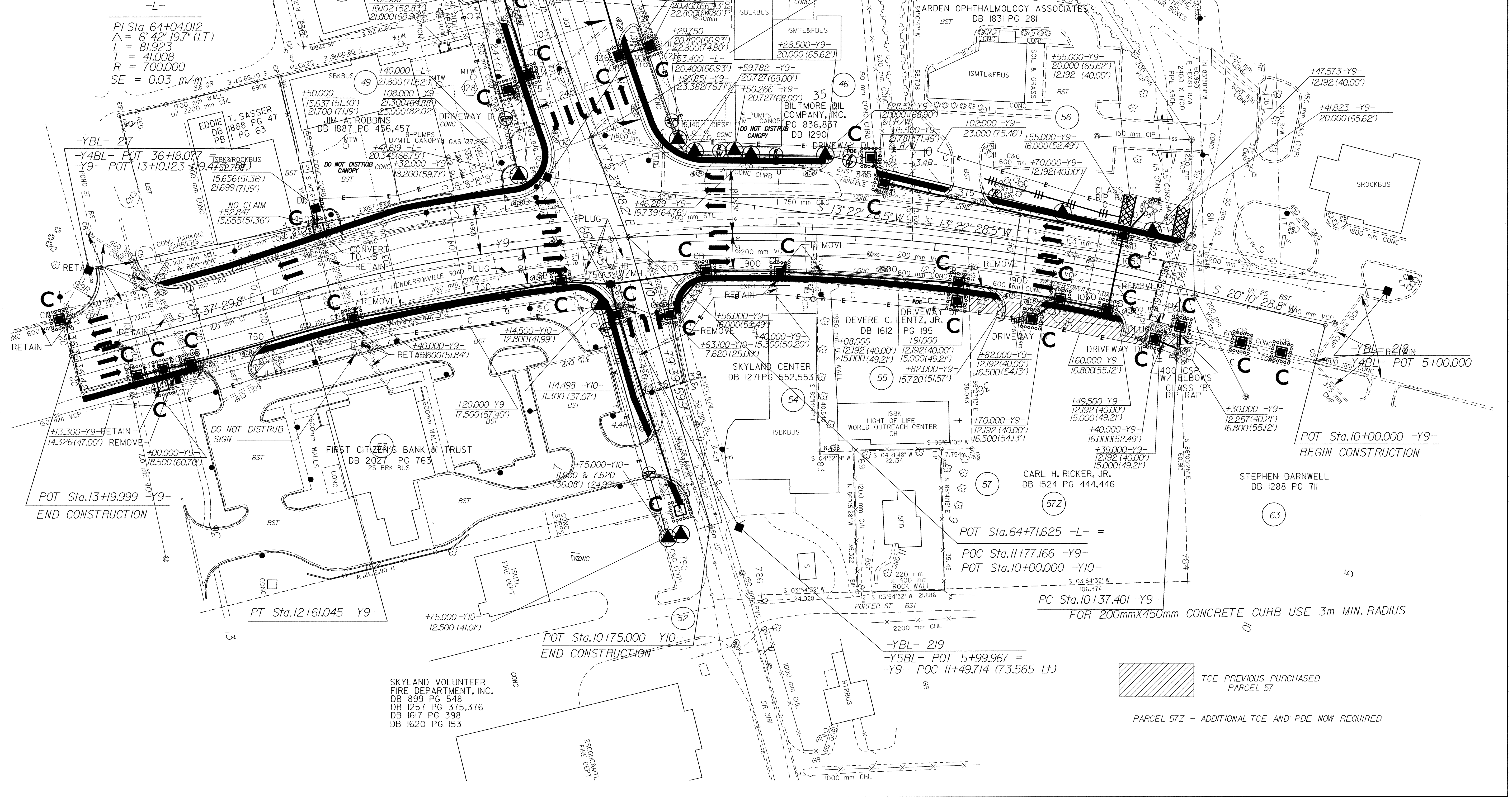


NEW R/W TO BE ACQUIRED
 RETAIN THE TCE ACQUIRED VIA ADVANCE ACQUISITION IN 2000
 R/W ACQUIRED VIA ADVANCE ACQUISITION IN 2000
 NEW R/W TO BE DESIGNATED AS PARCEL 45Z

	PROJECT REFERENCE NO.	SHEET NO.
	R-2813C	EC-23/CONST13
	R/W SHEET NO.	13
	ROADWAY DESIGN ENGINEER	HYDRAULICS ENGINEER
CONST. REV.		
R/W REV.		



SKYLAND VOLUNTEER FIRE DEPARTMENT, INC.
 DB 899 PG 548
 DB 1257 PG 375,376
 DB 1617 PG 398
 DB 1620 PG 153

TCE PREVIOUS PURCHASED PARCEL 57
 PARCEL 57Z - ADDITIONAL TCE AND PDE NOW REQUIRED