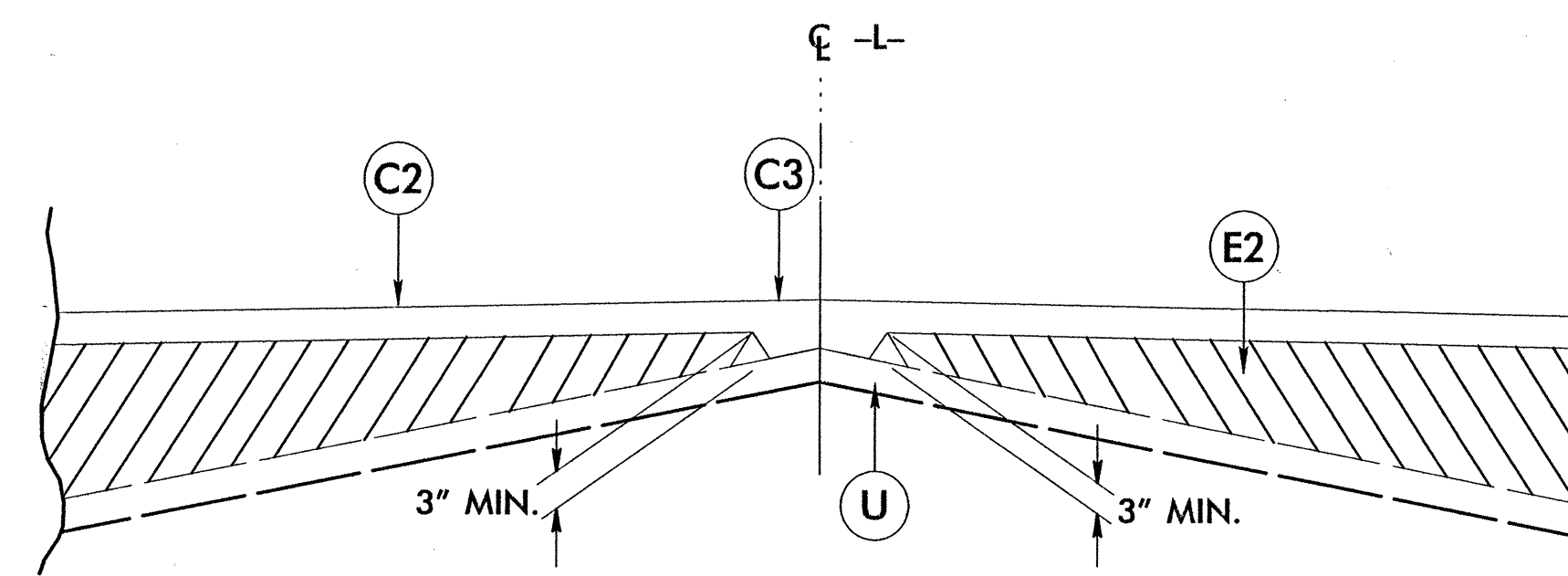


PAVEMENT SCHEDULE

A1	16" PORTLAND CEMENT CONCRETE PAVEMENT
C1	PROPOSED APPROX. 2" ASPHALT CONCRETE SURFACE COURSE, TYPE SF9.5A, AT AN AVERAGE RATE OF 110 LBS. PER SQ. YARD IN EACH OF TWO LAYERS.
C2	PROPOSED APPROX. 3" ASPHALT CONCRETE SURFACE COURSE, TYPE SF9.5A, AT AN AVERAGE RATE OF 165 LBS. PER SQ. YARD IN EACH OF TWO LAYERS.
C3	PROPOSED VARIABLE DEPTH ASPHALT CONCRETE SURFACE COURSE, TYPE SF9.5A, AT AN AVERAGE RATE OF 110 LBS. PER SQ. YARD, PER 1" DEPTH, TO BE PLACED IN LAYERS NOT LESS THAN 1" OR GREATER THAN 1 1/2" IN DEPTH.
E1	PROPOSED APPROX. 4" ASPHALT CONCRETE BASE COURSE, TYPE B25.0B, AT AN AVERAGE RATE OF 456 LBS. PER SQ. YARD.
E2	PROPOSED VARIABLE DEPTH ASPHALT CONCRETE BASE COURSE, TYPE B25.0B AT AN AVERAGE RATE OF 114 LBS. PER SQ. YARD, PER 1" DEPTH, TO BE PLACED IN LAYERS NOT LESS THAN 3" OR GREATER THAN 5 1/2" IN DEPTH.
J	6" AGGREGATE BASE COURSE
T	EARTH MATERIAL
U	EXISTING PAVEMENT
W	WEDGING (SEE WEDGING DETAIL)
Z	4" SINGLE FACED BARRIER

NOTE: ALL PAVEMENT EDGE SLOPES ARE 1:1 UNLESS OTHERWISE SHOWN.

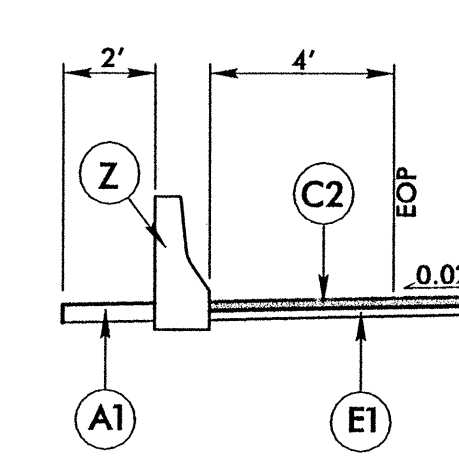


DETAIL SHOWING METHOD OF WEDGING

USE IN CONJUNCTION WITH TYPICAL SECTION NO. 2

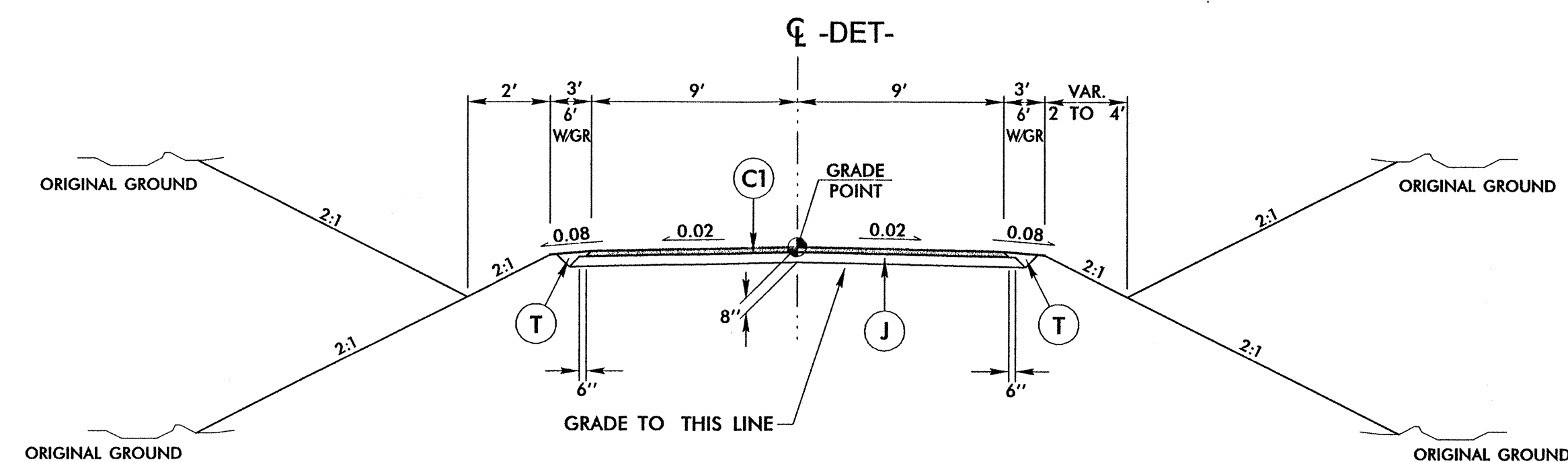
MULKEY
ENGINEERS & CONSULTANTS
P.O. BOX 32127
RALEIGH, N.C. 27636
(919) 851-1912
(919) 851-1913 FAX
WWW.MULKEYINC.COM

PROJECT REFERENCE NO. B-3808	SHEET NO. 2
ROADWAY DESIGN ENGINEER	PAVEMENT DESIGN ENGINEER



DETAIL NO. 1

USE IN CONJUNCTION WITH TYPICAL SECTION NO. 3
-L- STA 17+52.53 +/- TO STA 17+60.00 +/- LT



TYPICAL SECTION NO. 1

USE TYPICAL SECTION NO. 1 AT THE FOLLOWING LOCATION:

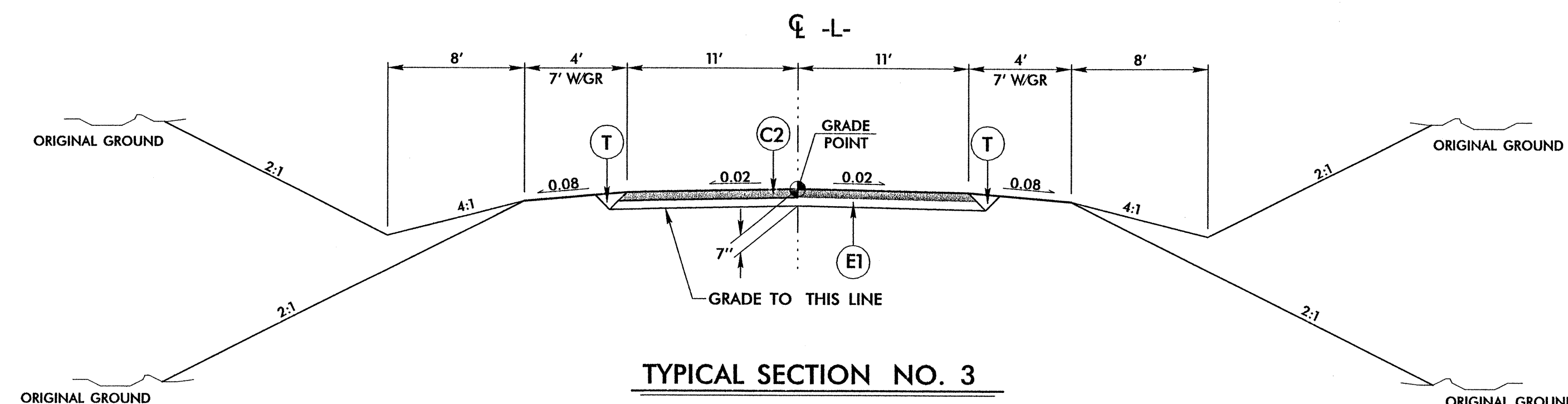
-DET- STA 14+21.76 TO STA 18+79.03

TRANSITION FROM EXISTING TO TS NO. 1

STA 12+50.00 TO STA 14+21.76

TRANSITION FROM TS NO. 1 TO EXISTING

STA 18+79.23 TO STA 20+00.00

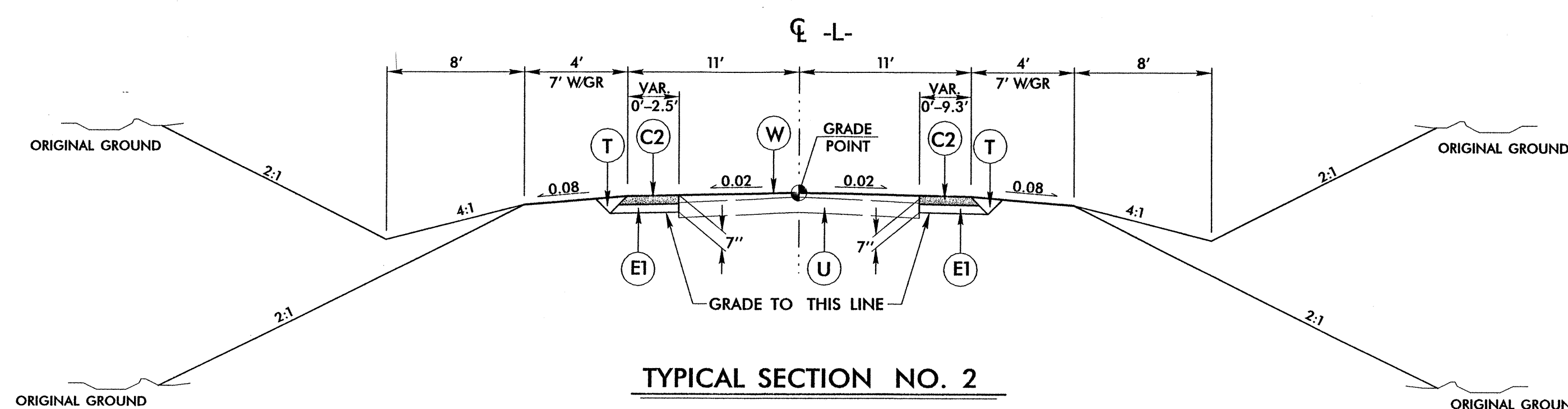


TYPICAL SECTION NO. 3

USE TYPICAL SECTION NO. 3 AT THE FOLLOWING LOCATIONS:

-L- STA 14+50.00 TO STA 16+89.70

-L- STA 17+37.30 TO STA 19+50.00

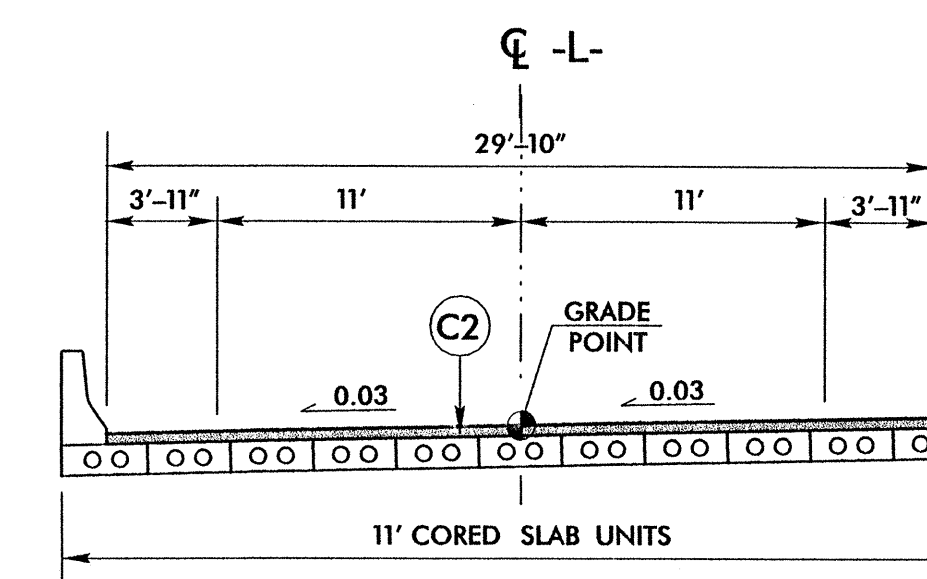


TYPICAL SECTION NO. 2

USE TYPICAL SECTION NO. 2 AT THE FOLLOWING LOCATIONS:

-L- STA 11+00.00 TO STA 14+50.00

-L- STA 19+50.00 TO STA 20+50.00



**PROPOSED CORED SLAB BRIDGE
SEE STRUCTURE PLANS**

TYPICAL SECTION NO. 4

USE TYPICAL SECTION NO. 4 AT THE FOLLOWING LOCATION:

-L- STA 16+89.70 TO STA 17+37.30