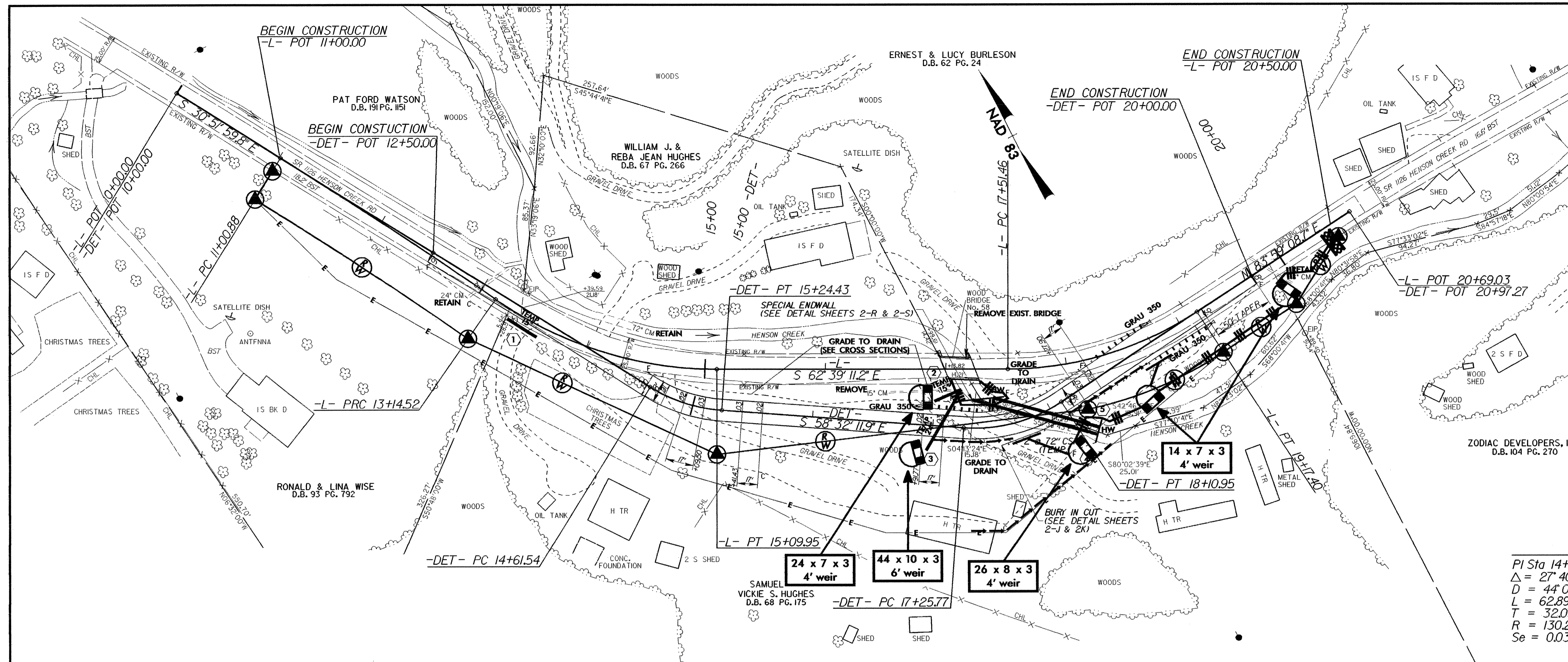
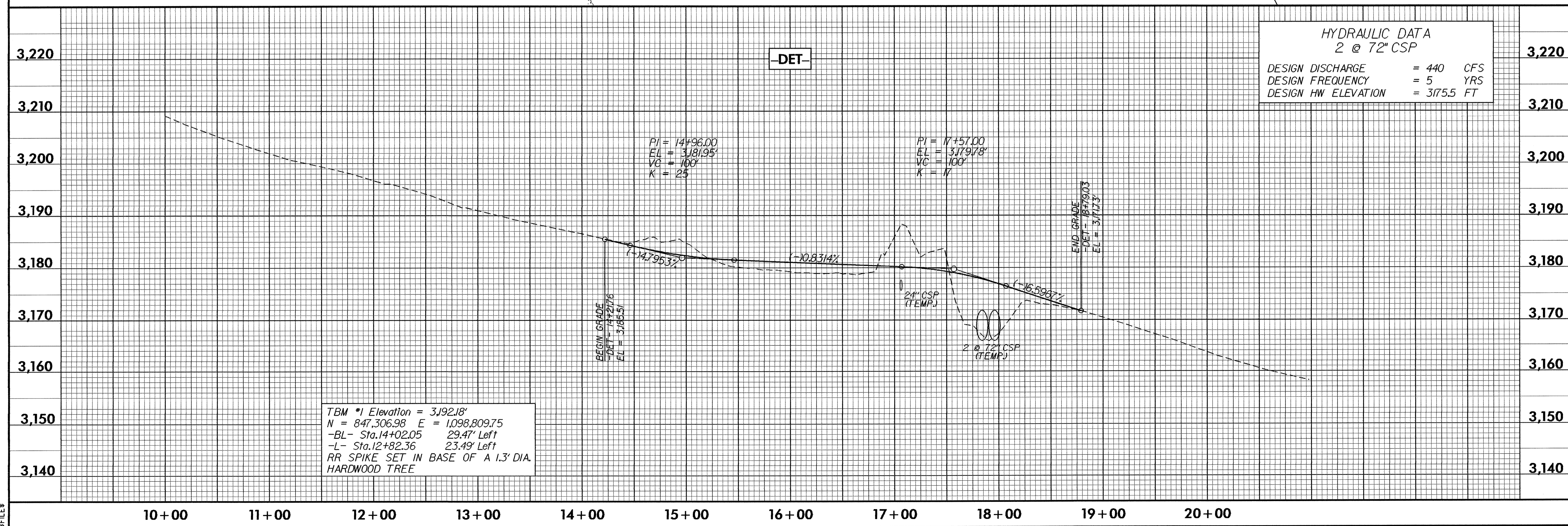


PROJECT REFERENCE NO.	SHEET NO.
B-3808	EC-4/CONST.2-A
RW SHEET NO.	
ROADWAY DESIGN ENGINEER	HYDRAULICS ENGINEER



-DET-

PI Sta 14+93.61	PI Sta 17+69.95
$\Delta = 27^{\circ} 40' 12.1''$ (LT)	$\Delta = 37^{\circ} 28' 39.4''$ (LT)
D = 44' 00" 00.0"	D = 44' 00" 00.0"
L = 62.89'	L = 85.18'
T = 32.07'	T = 44.17'
R = 130.22'	R = 130.22'
Se = 0.03	Se = 0.03



TBM \*1 Elevation = 3192.18'  
 N = 847,306.98 E = 1,098,809.75  
 -BL- Sta. 14+02.05 29.47' Left  
 -L- Sta. 12+82.36 23.49' Left  
 RR SPIKE SET IN BASE OF A 1.3' DIA. HARDWOOD TREE

\$TIME\$  
 \$DATE\$  
 \$FILE\$