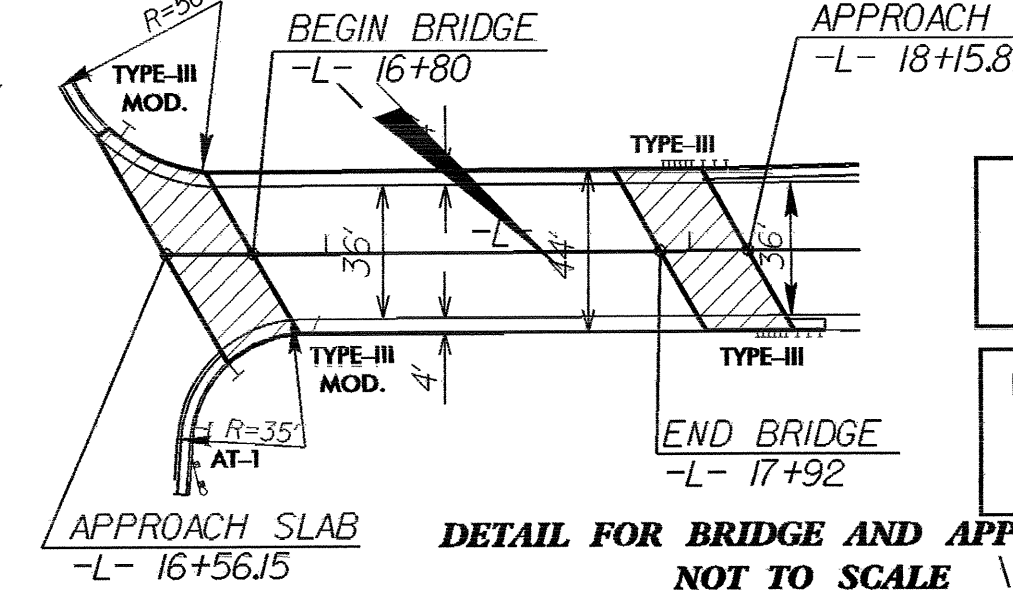
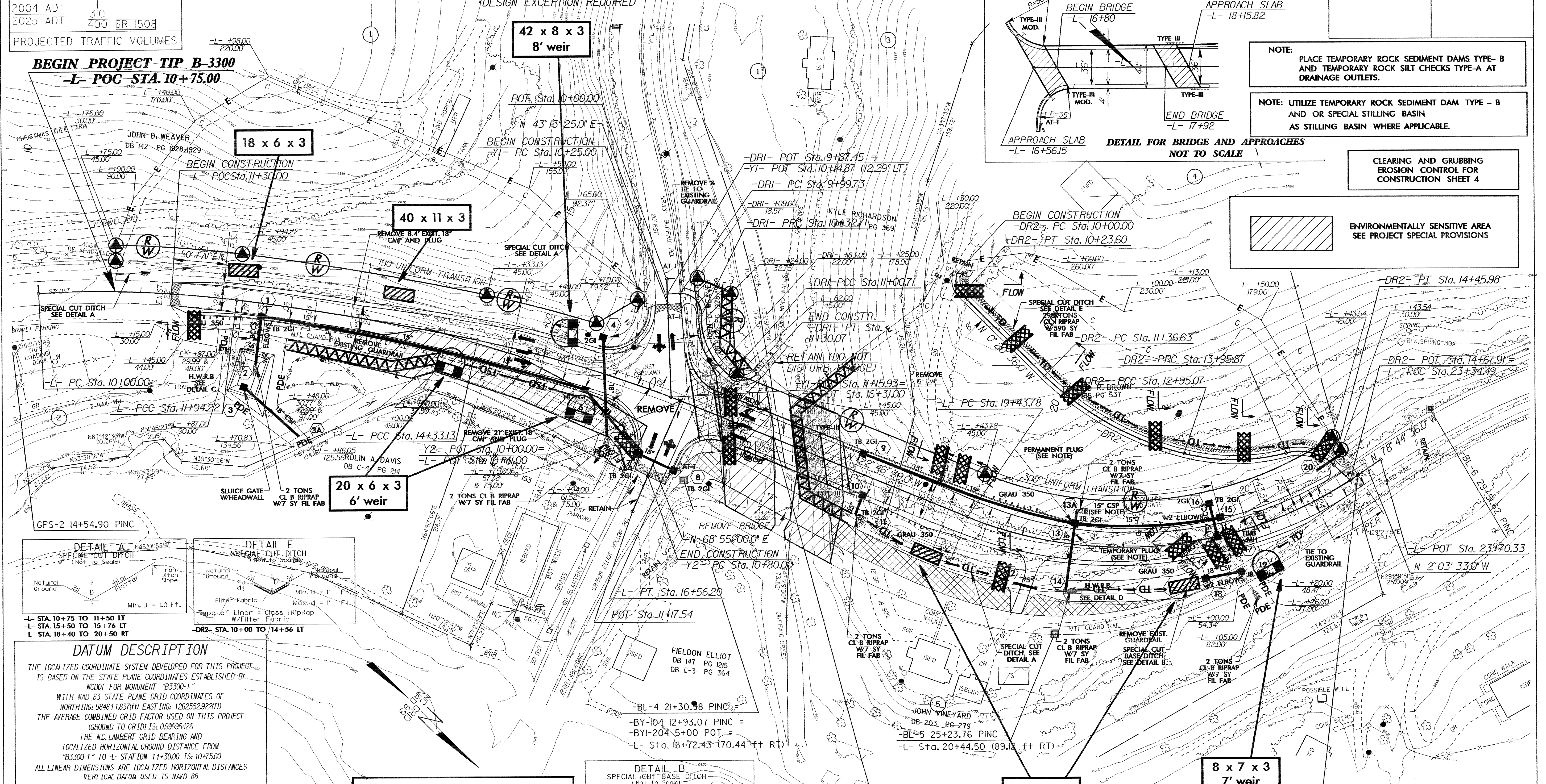


PI Sta 10+97.36 Δ = 10° 11' 46.7" (RT) D = 5' 15" 00.0" L = 194.22' T = 97.36' R = 1,091.35' SE = match exist.	PI Sta 13+13.74 Δ = 4° 46' 42.0" (RT) D = 2' 00" 00.0" L = 238.92' T = 119.53' R = 2,864.79' SE = 0.04 ft/ft	PI Sta 15+44.95 Δ = 10° 02' 17.3" (RT) D = 4' 30" 00.0" L = 223.07' T = 111.82' R = 1,273.24' SE = 0.04 ft/ft	PI Sta 21+61.23 Δ = 55° 57' 57.0" (LT) D = 14' 00" 00.0" (36mph) L = 399.76' T = 217.45' R = 409.26' SE = 0.06 ft/ft	PI Sta 10+33.91 Δ = 94° 28' 18.4" (RT) D = 286' 28" 44.0" L = 32.98' T = 21.63' R = 20.00'	PI Sta 10+81.95 Δ = 53° 22' 07.2" (LT) D = 78' 29" 14.5" L = 68.00' T = 21.63' R = 73.00'	PI Sta 11+31.30 Δ = 84° 06' 34.0" (LT) D = 286' 28" 44.0" L = 29.36' T = 18.04' R = 20.00'
--	--	---	--	---	--	---

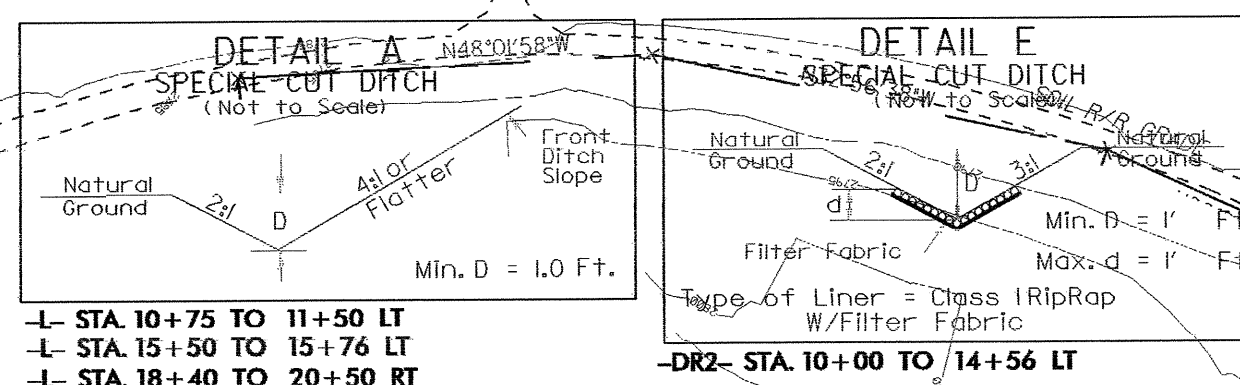
NOTE: TEMPORARILY PLUG PROPOSED OUTFLOW PIPE INSIDE STRUCTURE 13 AND PLACE TEMPORARY PIPE 13A WHILE HAZARDOUS WASTE RETENTION BASIN IS BEING BUILT. PLUG TEMPORARY PIPE AFTER COMPLETION OF H.W.R.B.

BEGIN PROJECT TIP B-3300
-L- POC STA. 10+75.00



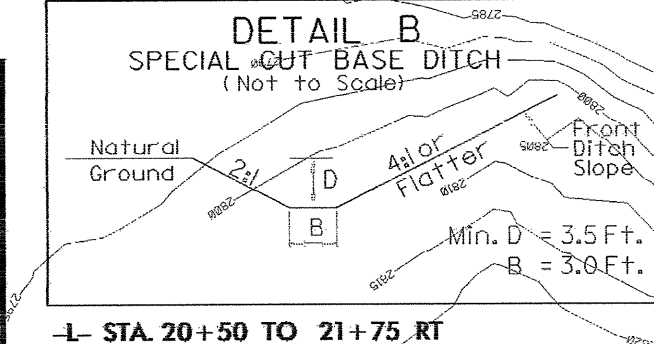
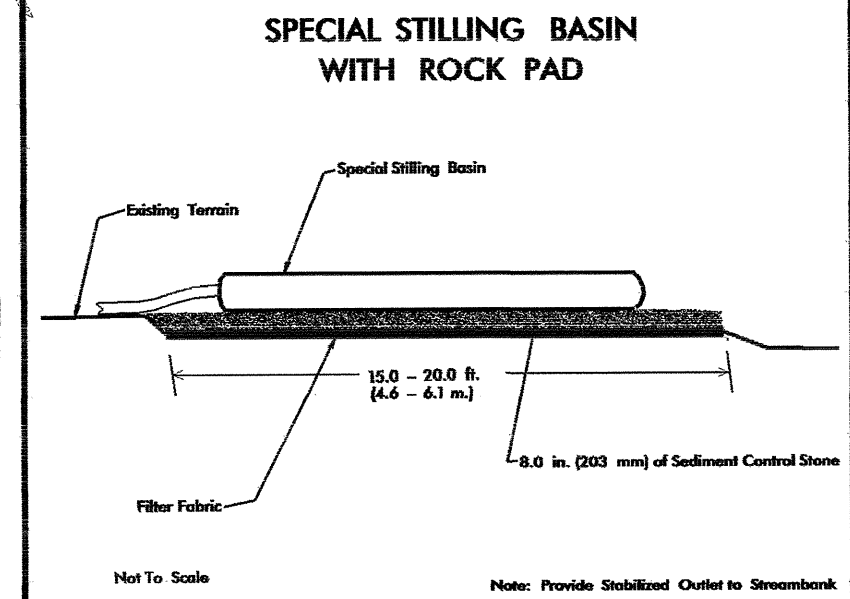
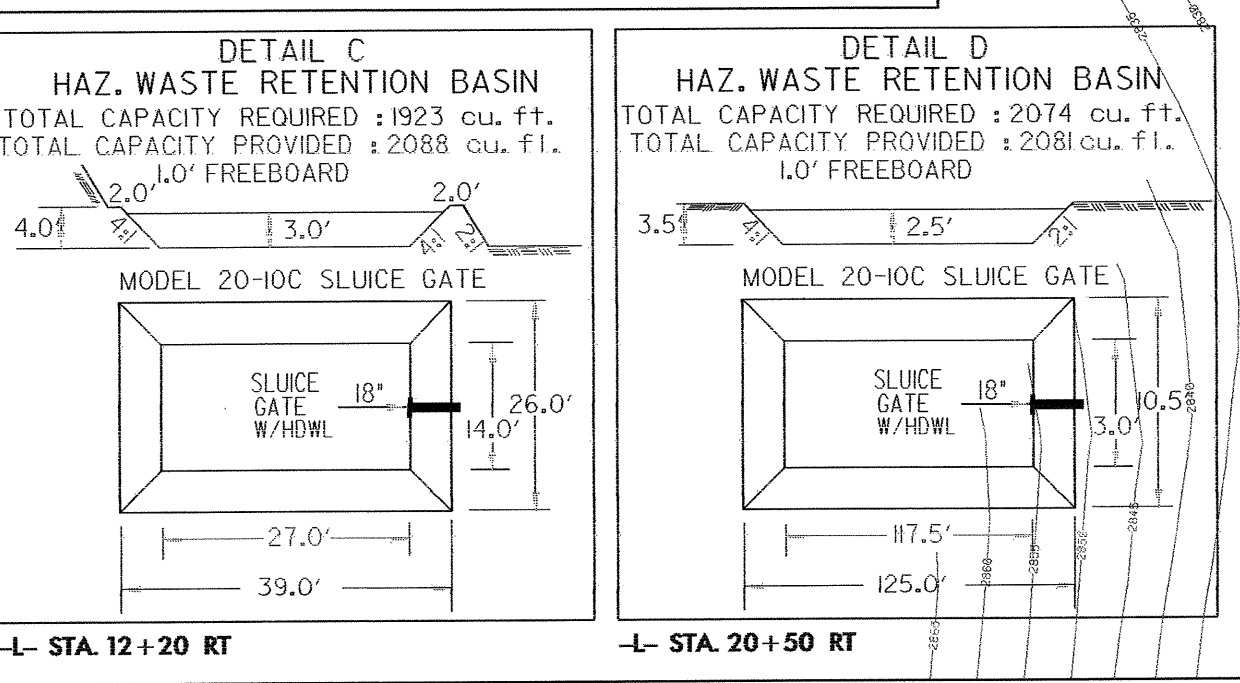
CLEARING AND GRUBBING EROSION CONTROL FOR CONSTRUCTION SHEET 4

ENVIRONMENTALLY SENSITIVE AREA SEE PROJECT SPECIAL PROVISIONS



DATUM DESCRIPTION

THE LOCALIZED COORDINATE SYSTEM DEVELOPED FOR THIS PROJECT IS BASED ON THE STATE PLANE COORDINATES ESTABLISHED BY NC DOT FOR MONUMENT "B3300-1" WITH NAD 83 STATE PLANE GRID COORDINATES OF NORTHING: 964811.837(11) EASTING: 1262552.922(11) THE AVERAGE COMBINED GRID FACTOR USED ON THIS PROJECT (GROUND TO GRID) IS: 0.99995426 THE N.C. LAMBERT GRID BEARING AND LOCALIZED HORIZONTAL GROUND DISTANCE FROM "B3300-1" TO -L- STATION 11+30.00 IS: 10+75.00 ALL LINEAR DIMENSIONS ARE LOCALIZED HORIZONTAL DISTANCES VERTICAL DATUM USED IS NAD 88



BEGIN APPROACH SLAB -L- STA. 16+56.15
BEGIN BRIDGE -L- STA. 16+80
END BRIDGE -L- STA. 17+92
END APPROACH SLAB -L- STA. 18+15.85

PI Sta 12+17.74 Δ = 30° 15' 35.8" (LT) D = 19' 05" 54.9" L = 158.44' T = 81.1' R = 300.00'	PI Sta 13+46.56 Δ = 28° 52' 38.7" (LT) D = 28' 38" 52.4" L = 100.80' T = 51.50' R = 200.00'	PI Sta 14+23.26 Δ = 57° 25' 17.5" (RT) D = 14' 35" 29.6" L = 50.11' T = 27.39' R = 50.00'
---	--	--

NOTE:

- SEE SHEET 2-B FOR ROCK PLATING DETAIL
- SEE SHEET 2-H FOR INTERSECTION AND SHOULDER BERM GUTTER DETAIL
- SEE SHEET 3-B FOR SHOULDER BERM GUTTER SUMMARY
- SEE SHEET 5 FOR PROFILES