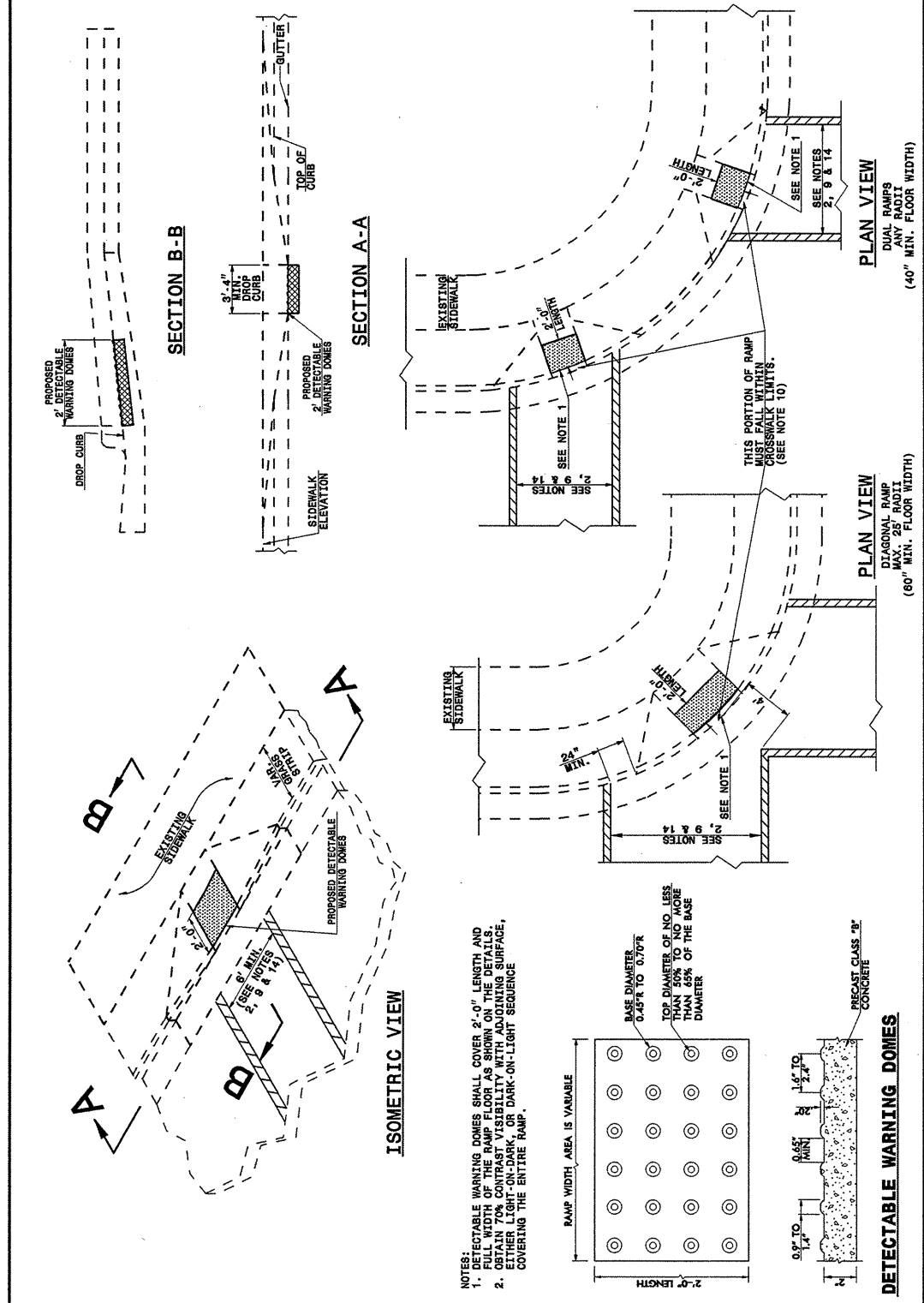


I:\SEP-2005\1407\Projects\Special Details\enward\stds\02\Stds to Special Details/english\848D06\0848D06.dgn
 8/22/05 11:52:22 AM ericward

STATE OF NORTH CAROLINA
DEPT. OF TRANSPORTATION
DIVISION OF HIGHWAYS
RALEIGH, N.C.

ENGLISH DETAIL DRAWING FOR
**RETROFITTING DETECTABLE WARNING DOMES
ONTO EXISTING WHEELCHAIR RAMP**
CURB CUT

SHEET 3 OF 5
848D06



STATE OF NORTH CAROLINA
DEPT. OF TRANSPORTATION
DIVISION OF HIGHWAYS
RALEIGH, N.C.

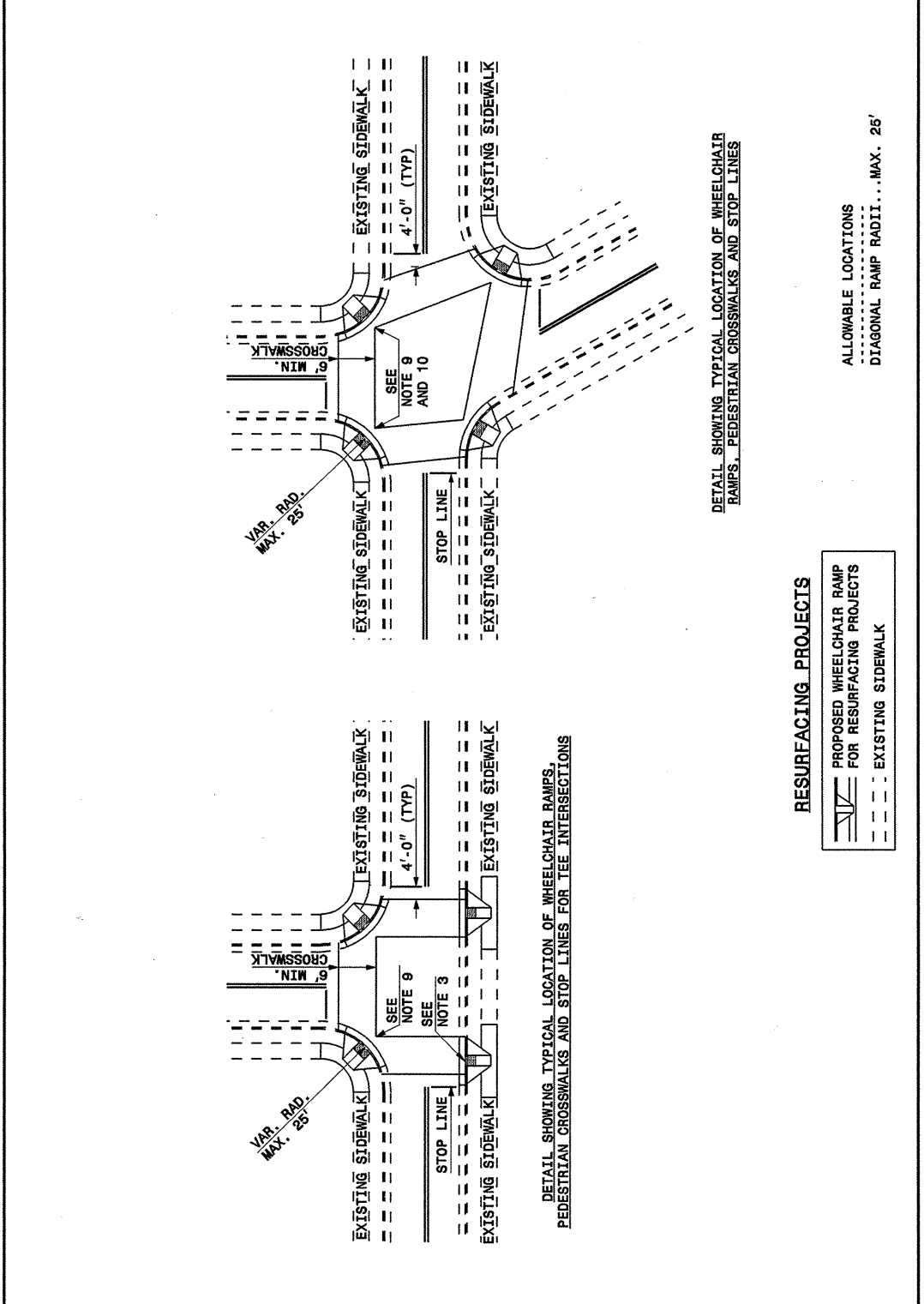
ENGLISH DETAIL DRAWING FOR
**RETROFITTING DETECTABLE WARNING DOMES
ONTO EXISTING WHEELCHAIR RAMP**
CURB CUT

SHEET 3 OF 5
848D06

STATE OF NORTH CAROLINA
DEPT. OF TRANSPORTATION
DIVISION OF HIGHWAYS
RALEIGH, N.C.

ENGLISH DETAIL DRAWING FOR
WHEELCHAIR RAMP
CURB CUT

SHEET 4 OF 5
848D06



STATE OF NORTH CAROLINA
DEPT. OF TRANSPORTATION
DIVISION OF HIGHWAYS
RALEIGH, N.C.

ENGLISH DETAIL DRAWING FOR
WHEELCHAIR RAMP
CURB CUT

SHEET 4 OF 5
848D06

PROJECT SERVICES UNIT
STANDARDS AND SPECIAL DESIGN
Office 919-250-4128 FAX 919-250-4119

SEE PLATE FOR TITLE

ORIGINAL BY: DETAIL 848D06 DATE:
MODIFIED BY: E.E. WARD DATE: 09-06-05
CHECKED BY: DATE:
FILE SPEC.: /usr/stds/02/detail/english/84806/848D06.dgn