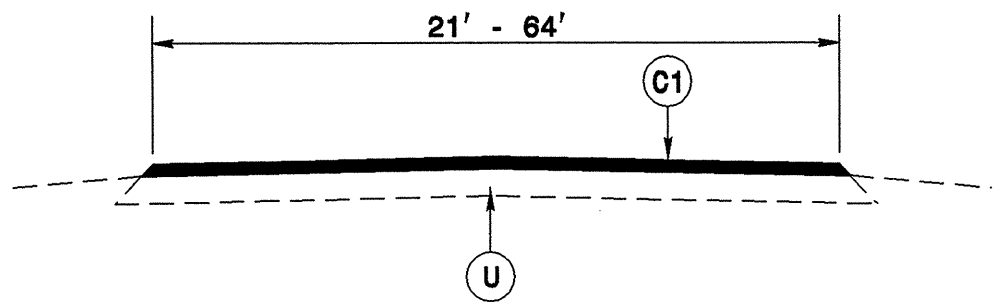


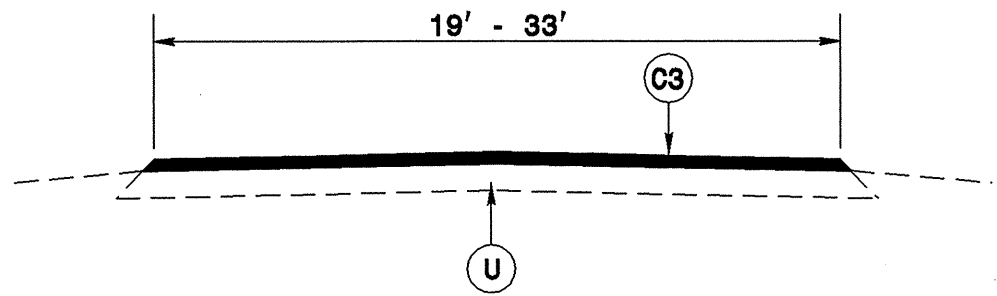
5/28/99

STATE	PROJECT NO.	SHEET NO.	TOTAL SHEETS
N.C.	7CR.10681.4, ETC	6	

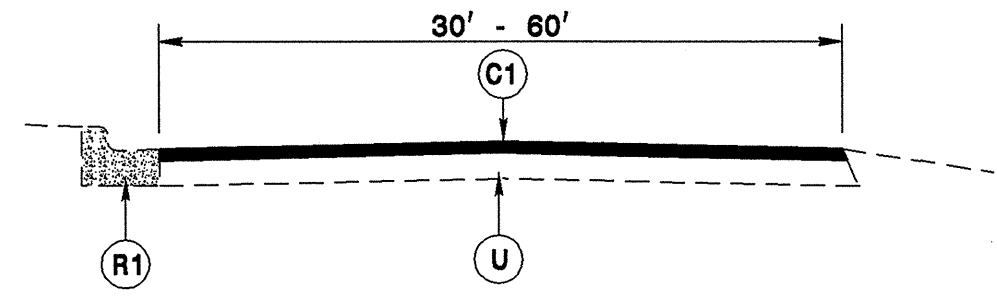
7CR.10681.4, 7CR.20681.4,
7CR.306802.4, 7CR.306803.4,
7CR.306811.4



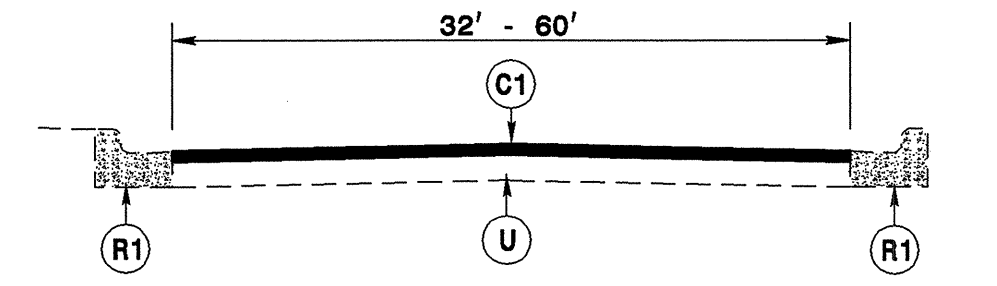
TYPICAL SECTION NO. 1



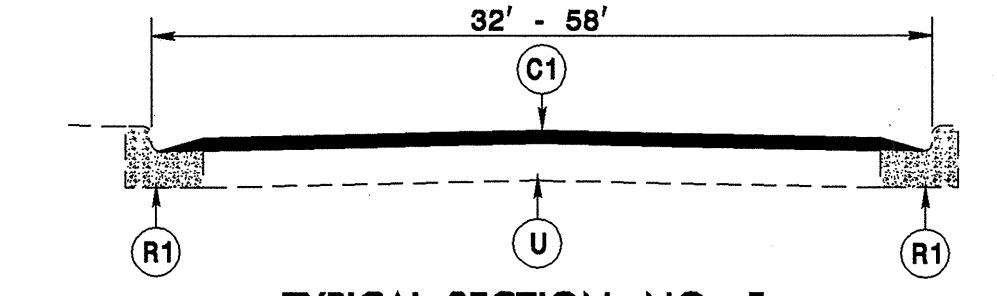
TYPICAL SECTION NO. 2



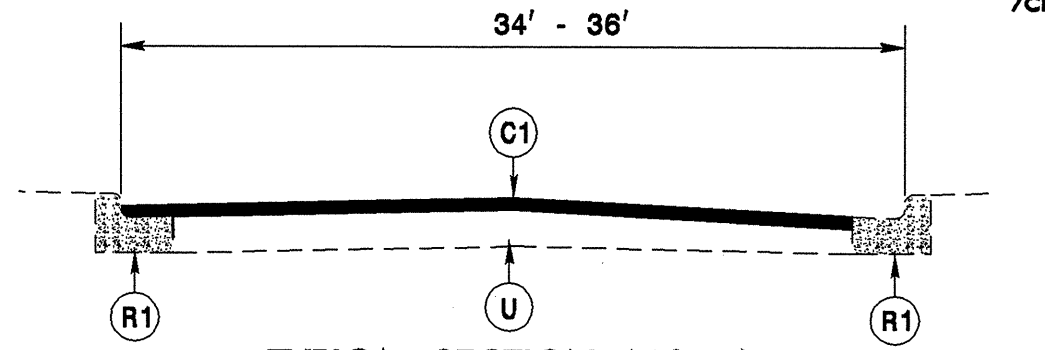
TYPICAL SECTION NO. 3



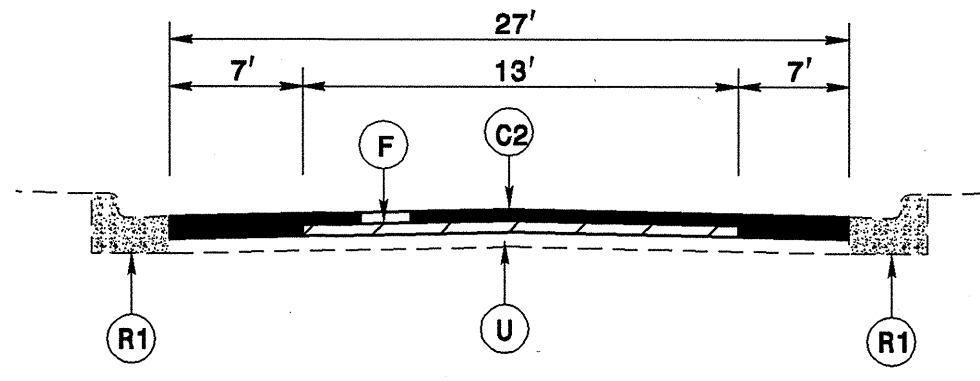
TYPICAL SECTION NO. 4



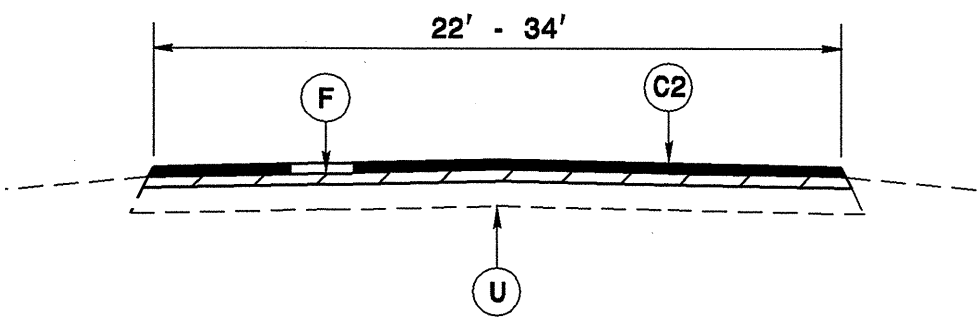
TYPICAL SECTION NO. 5



TYPICAL SECTION NO. 6



TYPICAL SECTION NO. 7



TYPICAL SECTION NO. 8

PAVEMENT SCHEDULE			
C1	PROP. APPROX. 1 1/2" ASPHALT CONCRETE SURFACE COURSE, TYPE S9.5B, AT AN AVERAGE RATE OF 188 LBS. PER SQ. YD.	F	ASPHALT SURFACE TREATMENT, NO. 78M STONE
C2	PROP. APPROX. 1" ASPHALT CONCRETE SURFACE COURSE, TYPE SF9.5A, AT AN AVERAGE RATE OF 110 LBS. PER SQ. YD.	R1	EXISTING 2-6 CURB AND GUTTER
C3	PROP. APPROX. 1 1/4" ASPHALT CONCRETE SURFACE COURSE, TYPE S9.5B, AT AN AVERAGE RATE OF 140 LBS. PER SQ. YD.		
D	PROP. ASPHALT CONCRETE INTERMEDIATE COURSE, TYPE I19.0B, AT AN AVERAGE RATE OF 342 LBS. PER SQ. YD.	U	EXISTING PAVEMENT.

SYSTEMS
