

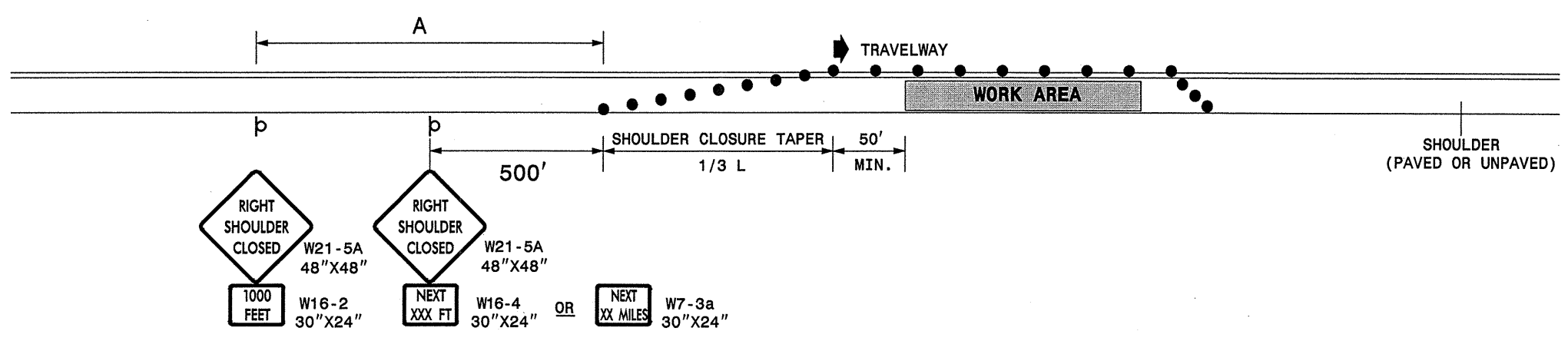
STATE OF NORTH CAROLINA  
DEPT. OF TRANSPORTATION  
DIVISION OF HIGHWAYS  
RALEIGH, N.C.

1-05

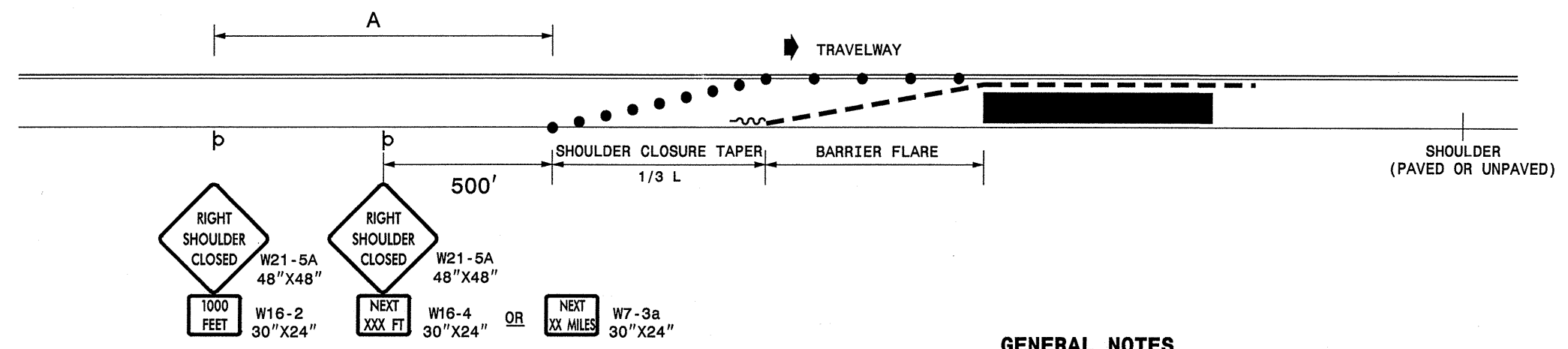
ENGLISH STANDARD DRAWING FOR  
TEMPORARY SHOULDER CLOSURES

SHEET 1 OF 1  
**1101D04**

**SHOULDER CLOSURES UTILIZING DRUMS**



**SHOULDER CLOSURES UTILIZING TEMPORARY BARRIER**



**GENERAL NOTES**

- PLACE SHOULDER CLOSURE SIGNS ON THE SAME SIDE AS THE SHOULDER THAT IS CLOSED.
- PLACE DRUMS IN THE SHOULDER TAPER AT THE MAXIMUM SPACING EQUAL IN FEET TO THE POSTED SPEED LIMIT. THE MAXIMUM SPACING OF DRUMS ALONG THE WORK AREA AND BARRIER FLARE IS EQUAL IN FEET TO 2 TIMES THE POSTED SPEED LIMIT.
- FLARE THE APPROACH END OF PORTABLE CONCRETE BARRIER BEYOND THE SHOULDER AND USE A CRASH CUSHION FOR PROTECTION IF THE EXPOSED END OF THE BARRIER IS WITHIN THE "CLEAR ZONE".
- USE STATIONARY SIGNS FOR LONG TERM OPERATIONS (LONGER THAN 3 DAYS).
- REFER TO STD. 1101.11 SHEETS 1, 3, & 4, FOR "L" DISTANCE, BARRIER FLARE RATES, AND SIGN SPACING.

**LEGEND**

- ~ TEMPORARY CRASH CUSHION
- - - PORTABLE CONCRETE BARRIER
- DRUM
- ⊔ STATIONARY OR PORTABLE SIGN
- ➔ DIRECTION OF TRAFFIC FLOW

STATE OF NORTH CAROLINA  
DEPT. OF TRANSPORTATION  
DIVISION OF HIGHWAYS  
RALEIGH, N.C.

1-05

SHEET 1 OF 1  
**1101D04**

31-OCT-2005 15:30  
\\dot\dfsroot\work\groups\wz\ccc\design\group4\sqquad4a\resurfacing\div07\wbs7cr106814etcoronge\TCR106814tc\_top\_5\_shoulder\_closures05.dgn  
pssymore AT WZTC206427

APPROVED: _____ DATE: _____	<b>REPLACEMENT DETAIL FOR RSD 1101.04</b>	
	SCALE: NONE	
	DATE: 11/04	
	DWG. BY: PS	
	DESIGN BY: JPG	
REVIEWED BY: MMM	REVISIONS	
	08/05	