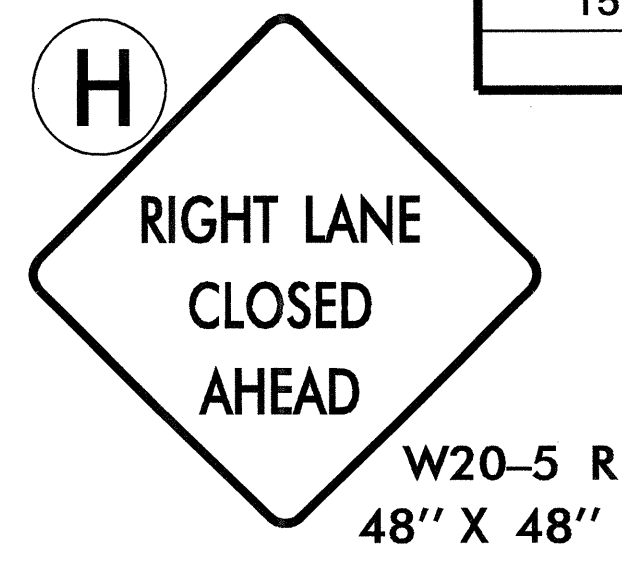
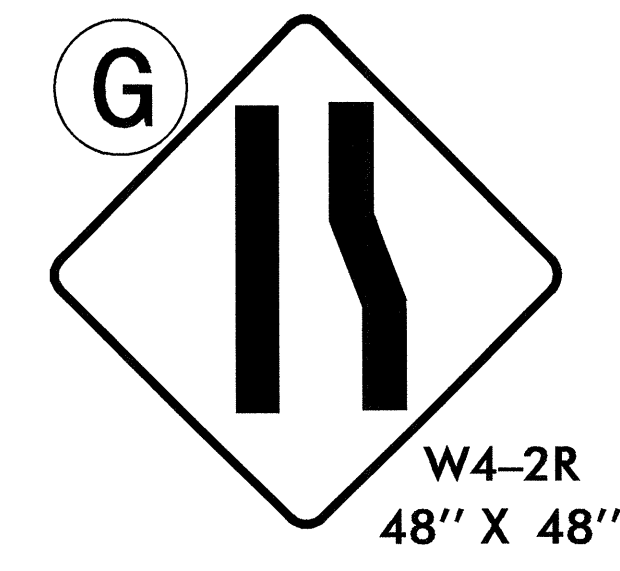
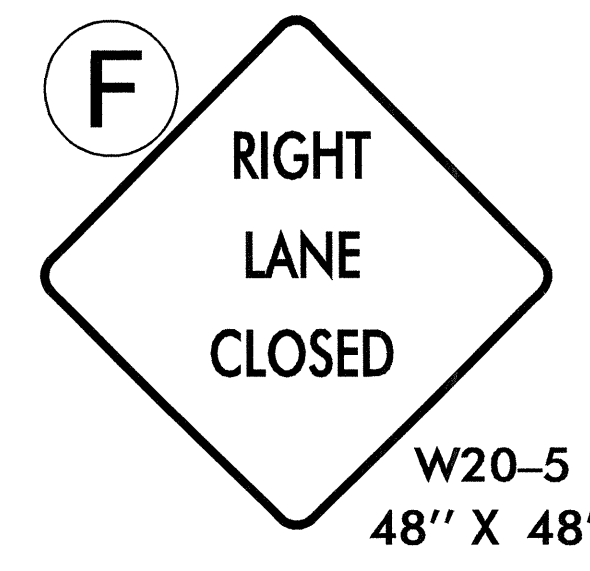
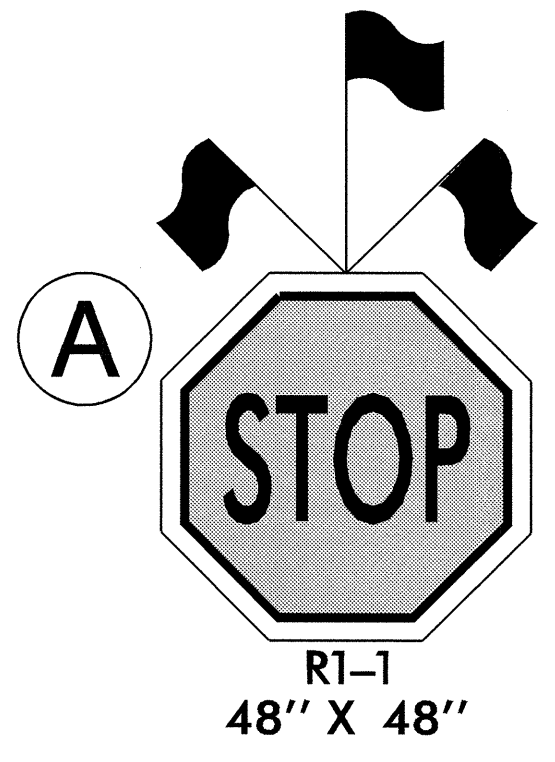
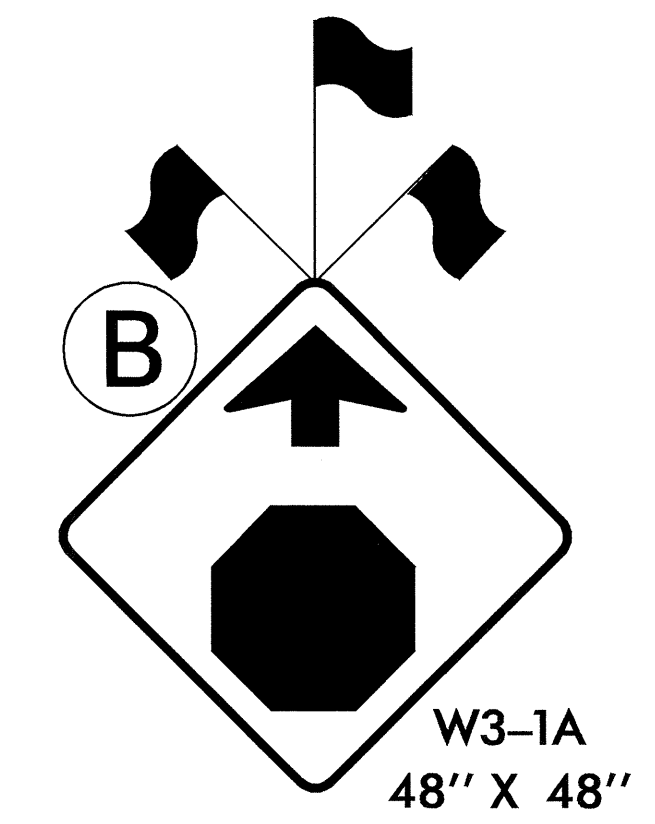
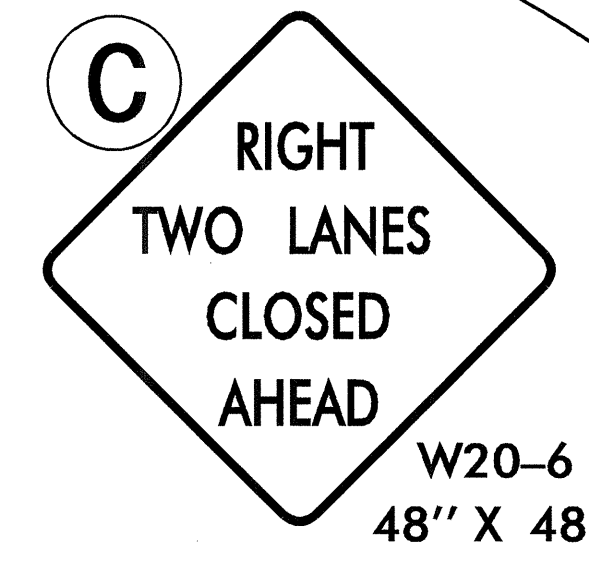
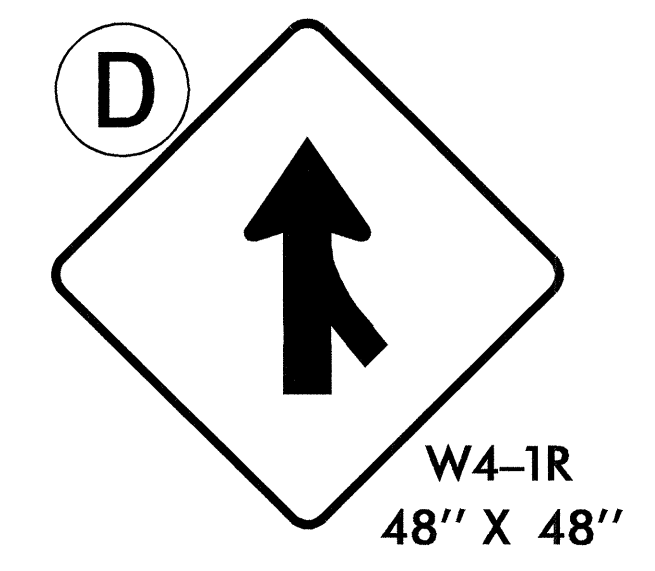
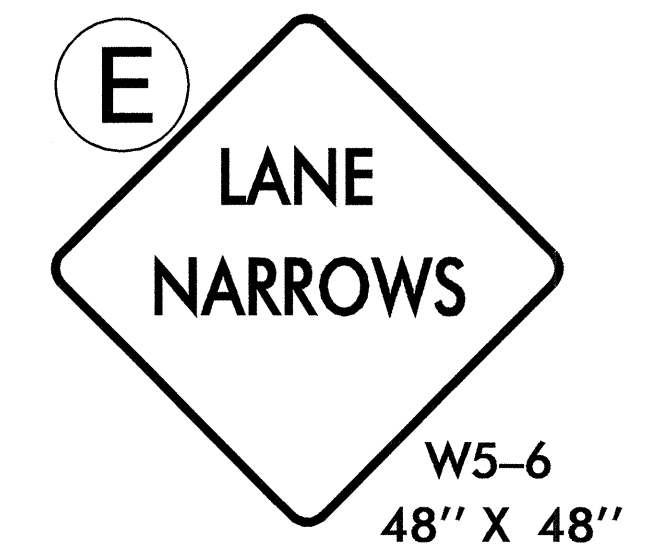
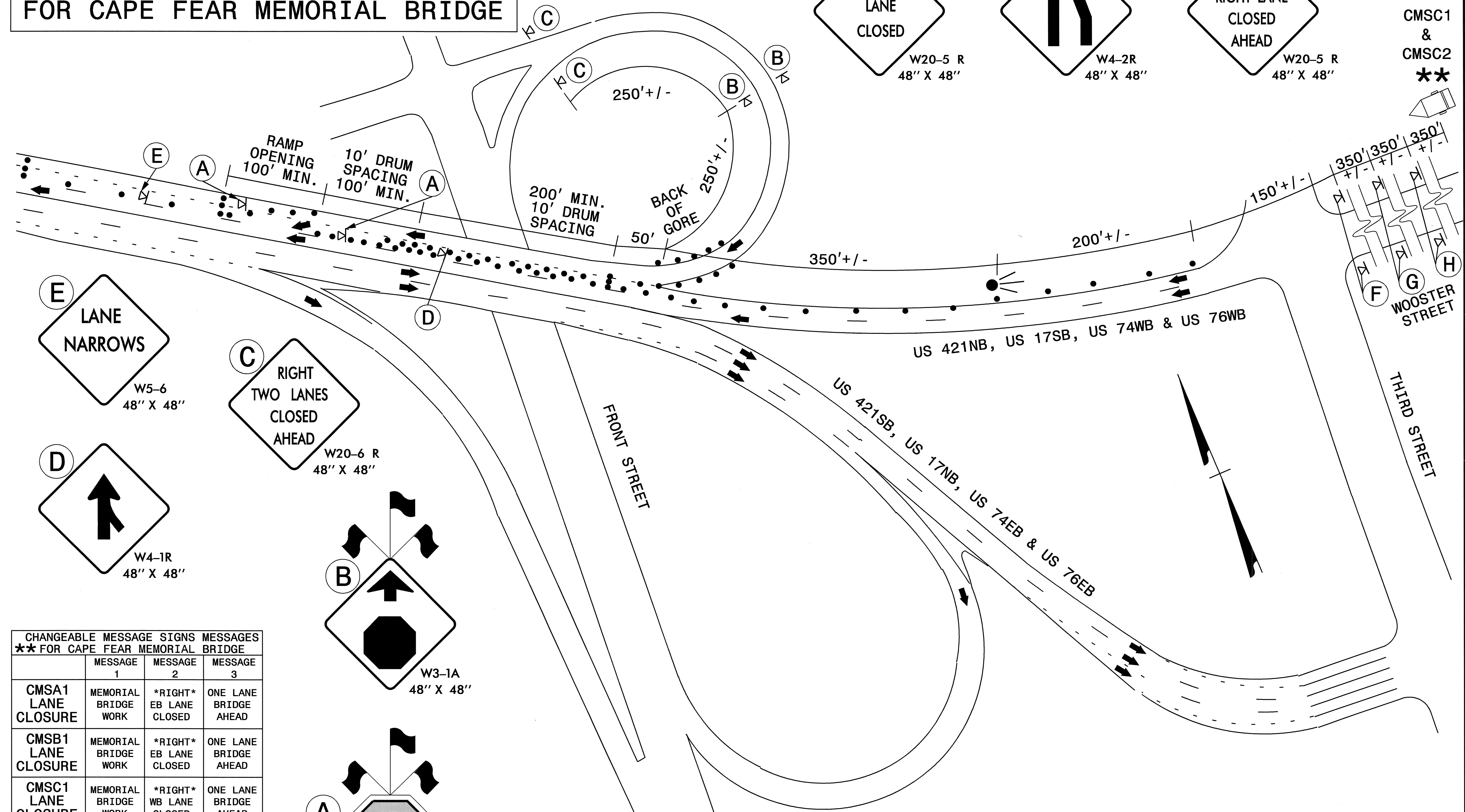


# OUTBOUND OUTSIDE LANE CLOSURE AND CMS LANE CLOSURE MESSAGES FOR CAPE FEAR MEMORIAL BRIDGE



CHANGEABLE MESSAGE SIGNS ** FOR CAPE FEAR MEMORIAL BRIDGE	MESSAGES		
	MESSAGE 1	MESSAGE 2	MESSAGE 3
CMSA1 LANE CLOSURE	MEMORIAL BRIDGE WORK	*RIGHT* EB LANE CLOSED	ONE LANE BRIDGE AHEAD
CMSB1 LANE CLOSURE	MEMORIAL BRIDGE WORK	*RIGHT* EB LANE CLOSED	ONE LANE BRIDGE AHEAD
CMSC1 LANE CLOSURE	MEMORIAL BRIDGE WORK	*RIGHT* WB LANE CLOSED	ONE LANE BRIDGE AHEAD
CMSD1 LANE CLOSURE	MEMORIAL BRIDGE WORK	*RIGHT* WB LANE CLOSED	ONE LANE BRIDGE AHEAD

NOTE: CHANGEABLE MESSAGE "\*RIGHT\* LANE CLOSED" COULD READ "LEFT LANE CLOSED". SEE TCP-3 FOR LOCATIONS OF CMSA1&2, CMSB1&2 AND CMSD1&2

APPROVED:	DATE: 8/22/2005	CAPE FEAR MEMORIAL BRIDGE OUTBOUND OUTSIDE LANE CLOSURE	
SEAL 	SCALE: NONE	REVISIONS	
	DATE: 08-19-05	CADD	
	DESIGN BY: PS	FILE	
	REVIEWED BY: MMM		

19-AUG-2005 12:03  
 \\DOT\dfs\root\groups-wz\TCC\design\group4\squad4a\resurfacing\div03\15b\div3\top\15b\1c\_top\_4\_oboslane.dgn  
 pseymore AT WZTC206427