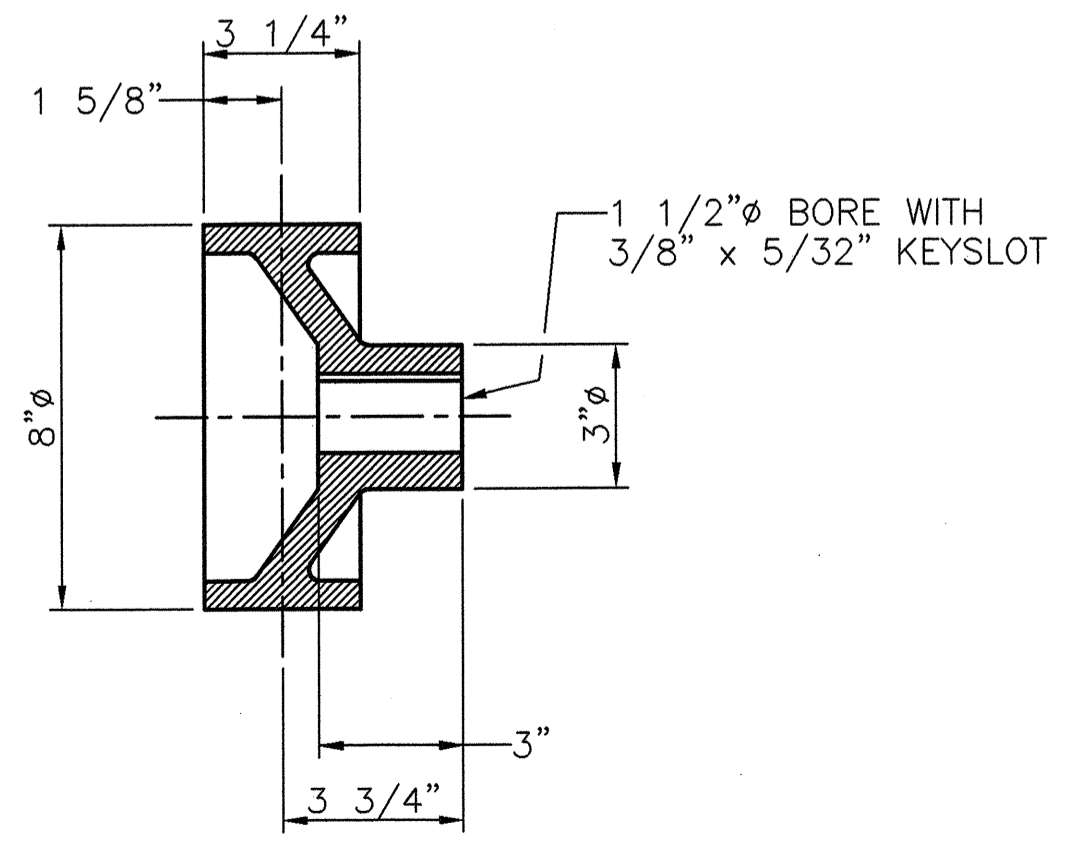
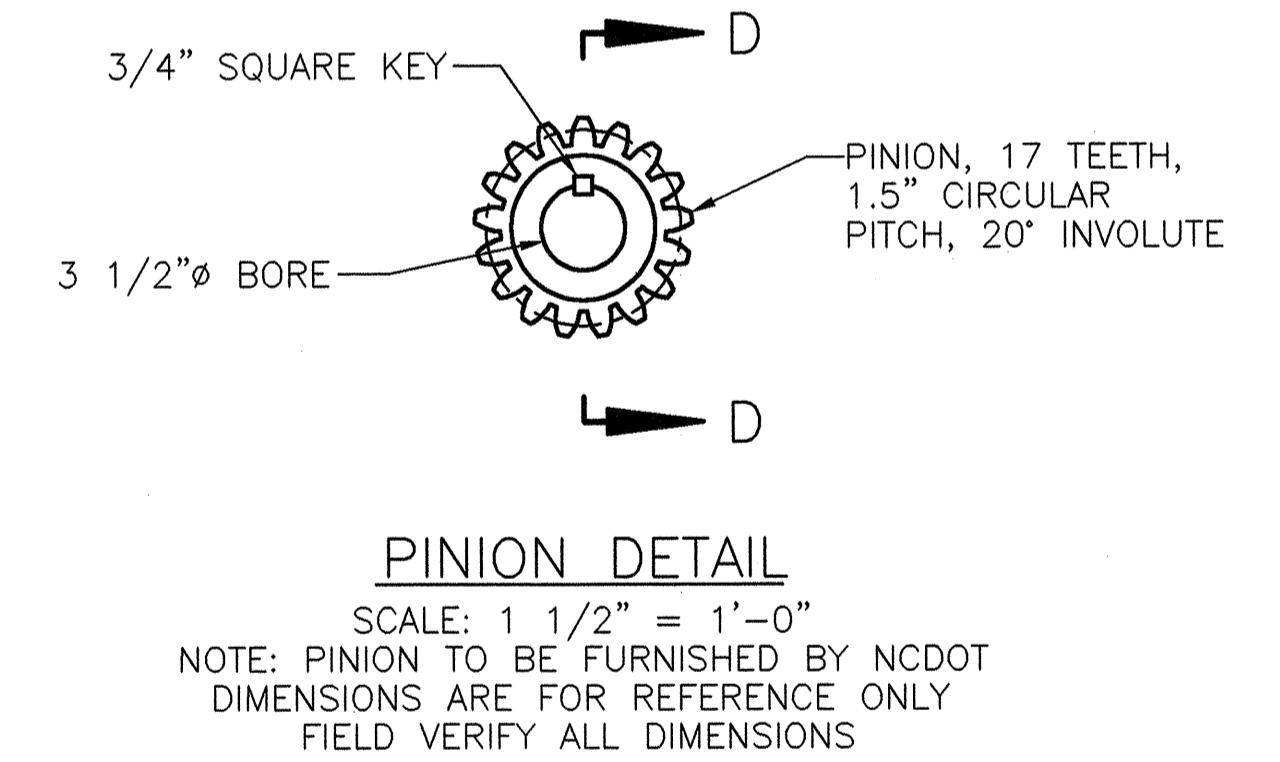
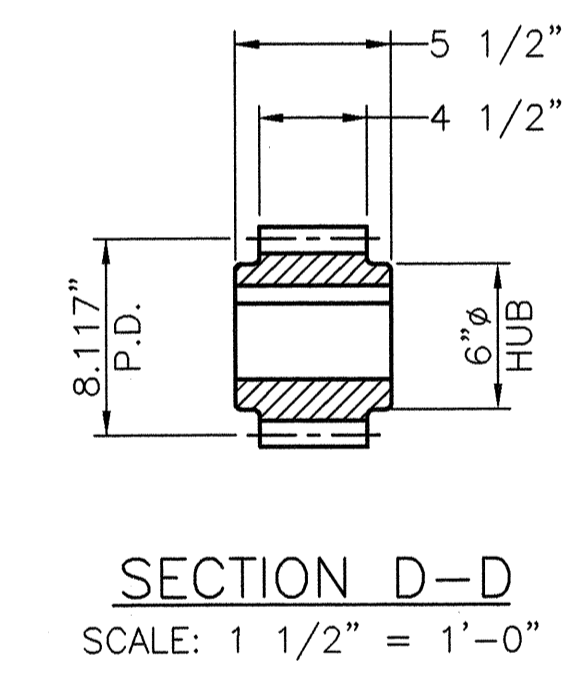
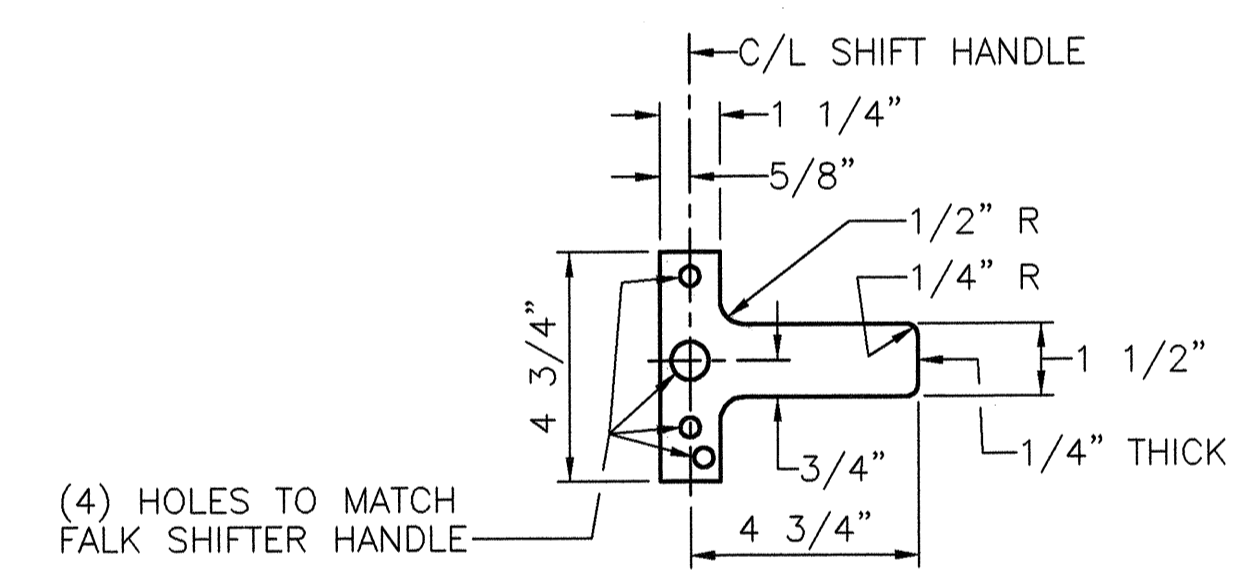
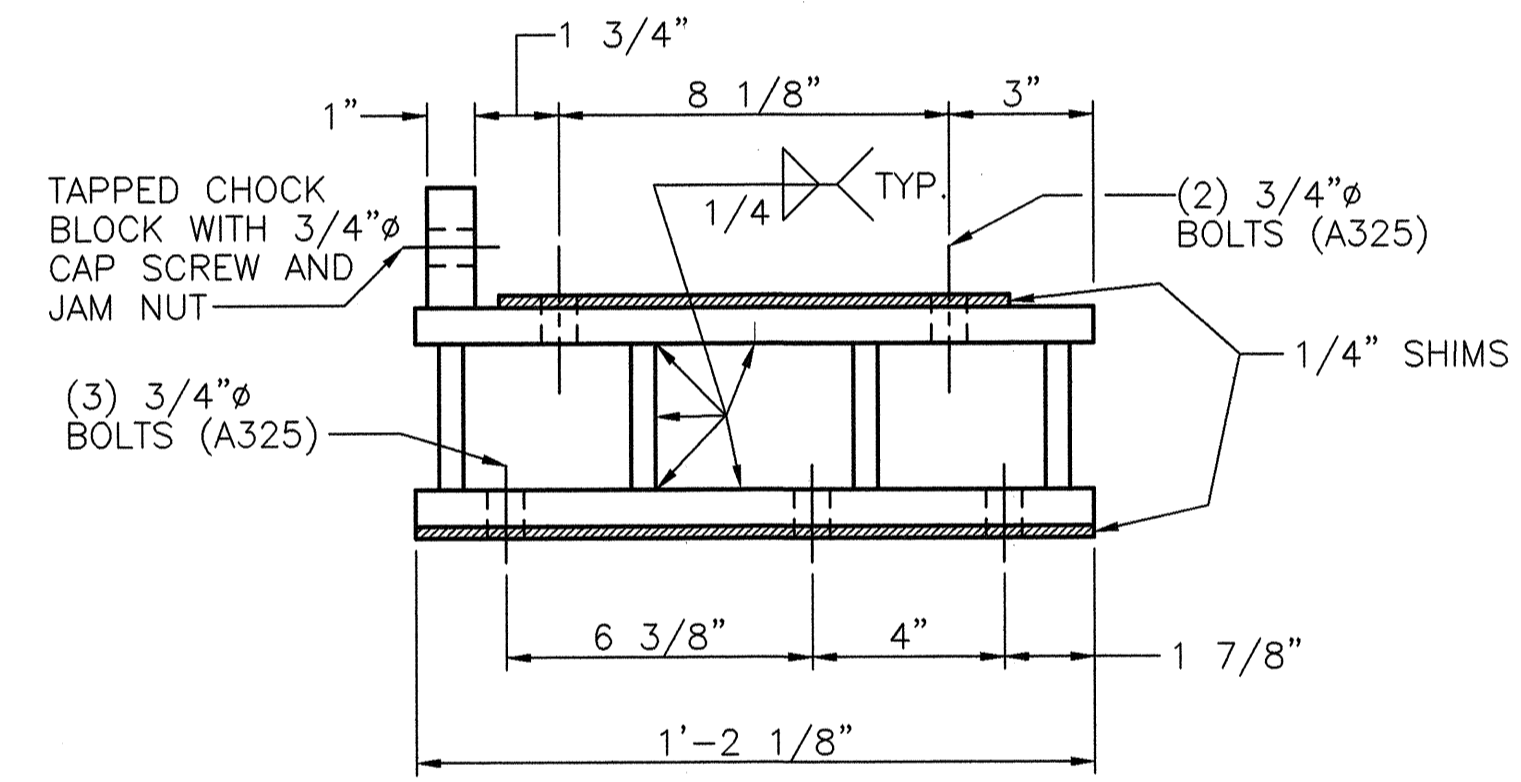
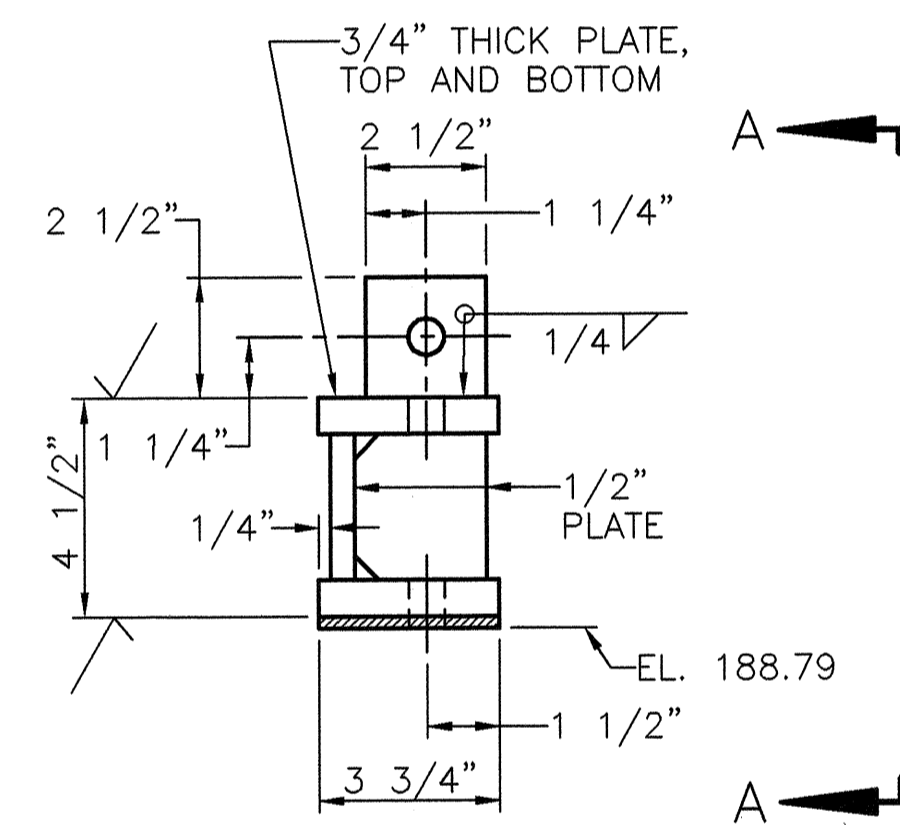
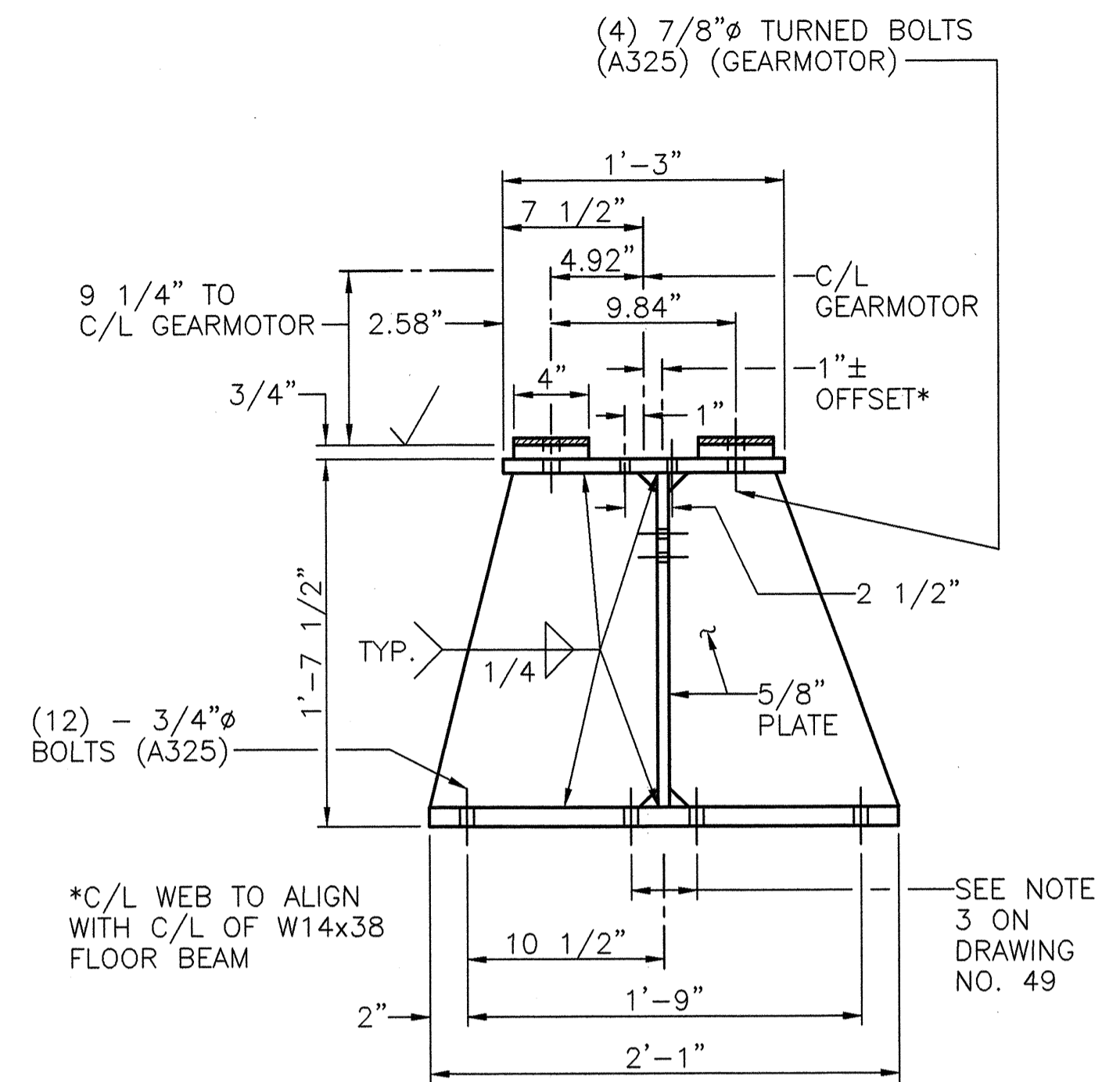
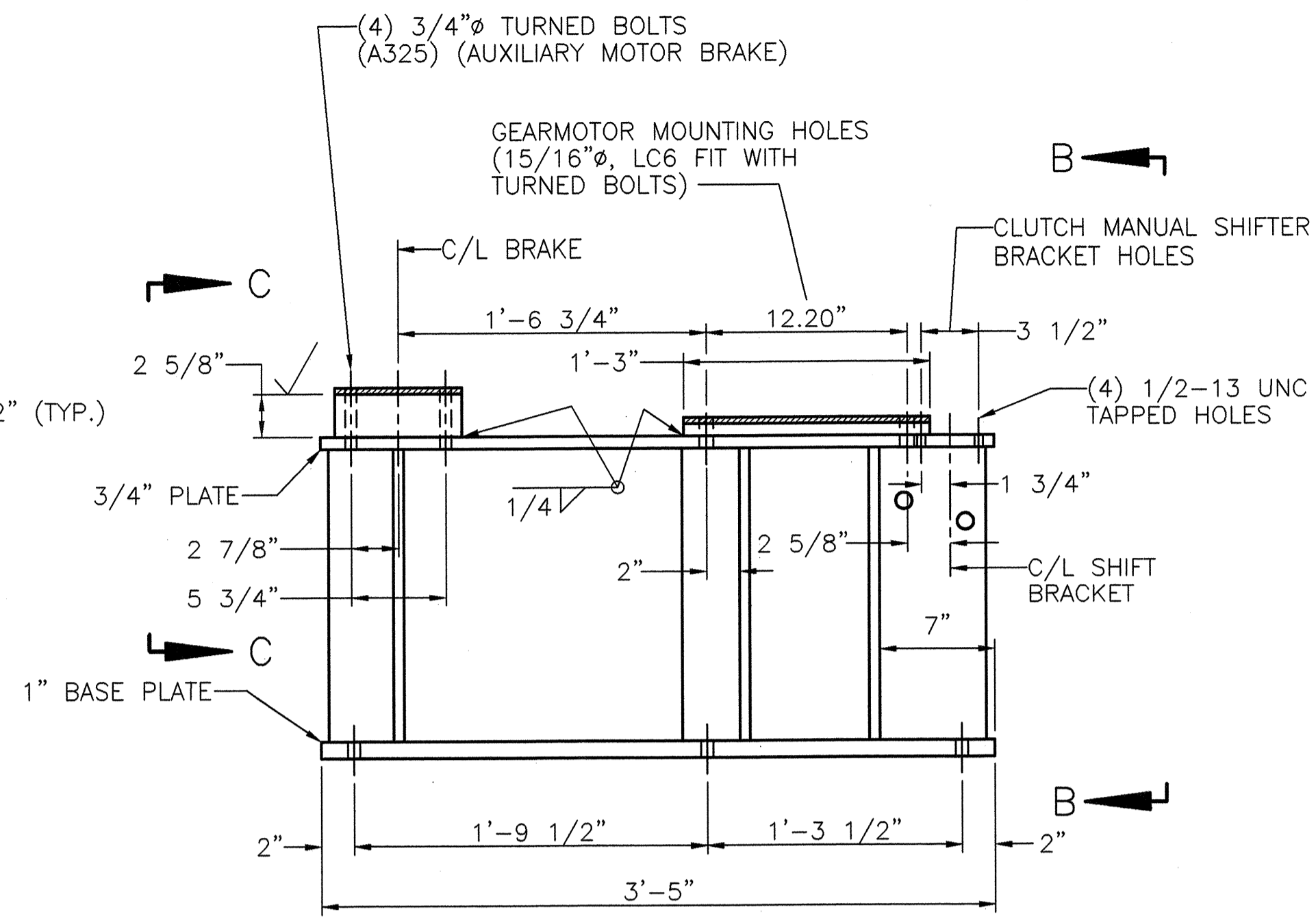
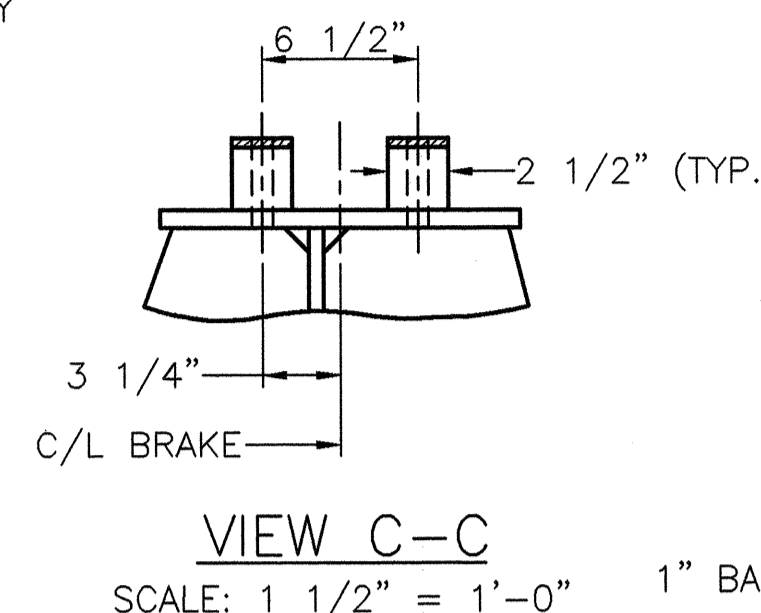
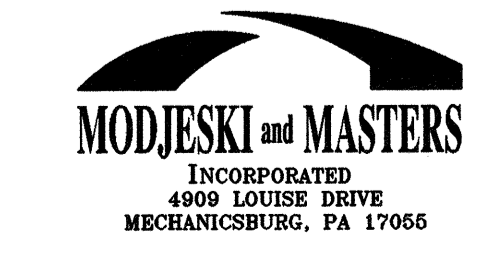
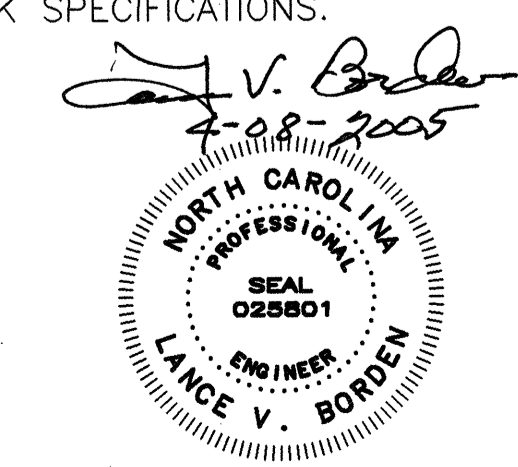


PINION SHAFT DETAIL
SCALE: 1 1/2" = 1'-0"
MATERIAL: FORGED ALLOY STEEL, ASTM A668, CLASS G



- NOTES:**
- CONTRACTOR SHALL FIELD VERIFY ALL DIMENSIONS PRIOR TO FABRICATION.
 - WELDMENTS SHALL BE MADE FROM ASTM A572, GRADE 50 STEEL PLATE.
 - √ DENOTES 125 MICROINCH FINISH.
 - PROVIDE 3/8" SHIMS, UNLESS OTHERWISE NOTED.
 - SEE SPECIAL PROVISIONS FOR SHIM PACK SPECIFICATIONS.



STATE OF NORTH CAROLINA DEPARTMENT OF TRANSPORTATION RALEIGH			
CAPE FEAR RIVER CROSSING WILMINGTON, NORTH CAROLINA			
AUXILIARY DRIVE MOTOR DETAILS			
DESIGNED D.L. MILLER		DRAWN BY R.L. REED	
CHECKED D.M. BARRETT		SCALE AS NOTED	
DETAILED R.L. REED		DATE APRIL, 2005	
CHECKED L.R. LENTZ		DRAWING NO. 50 OF 53	