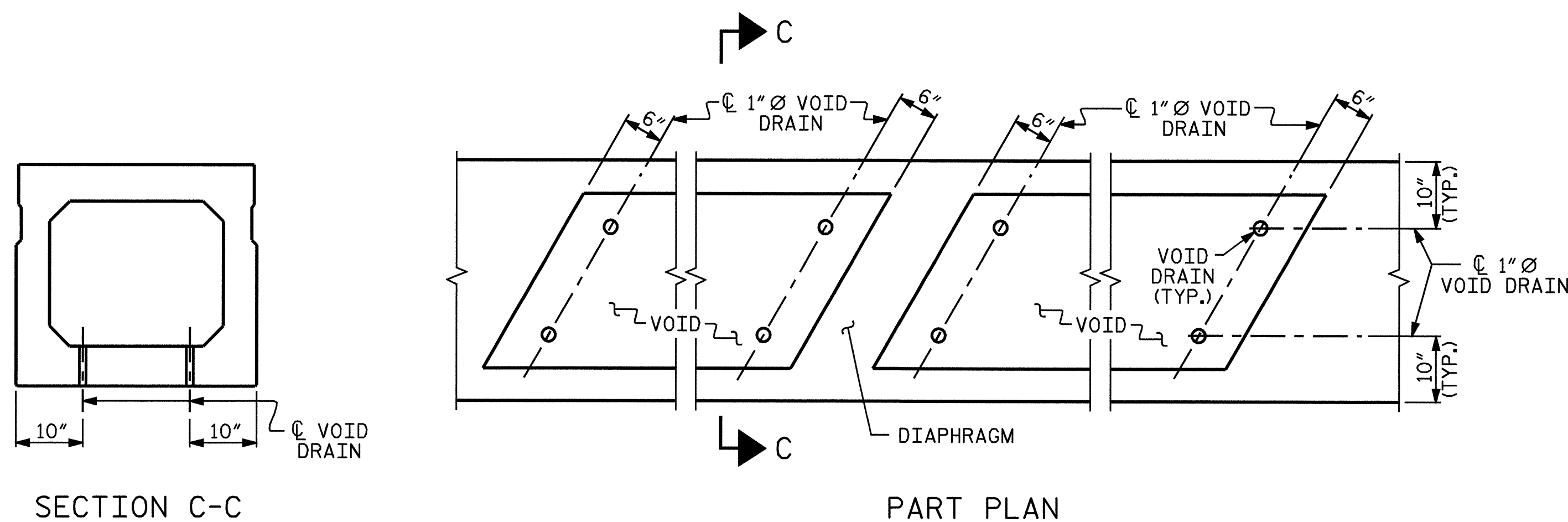


DOUBLE DIAPHRAGM DETAILS FOR 33" BOX BEAM

#4 "S" BARS NOT SHOWN. #4 "S" BARS MAY BE SHIFTED SLIGHTLY TO CLEAR 2" Ø HOLE.

GROUTED RECESS DETAIL AT END OF POST-TENSIONED STRANDS OF EXTERIOR 33" BOX BEAM



VOID DRAIN DETAILS

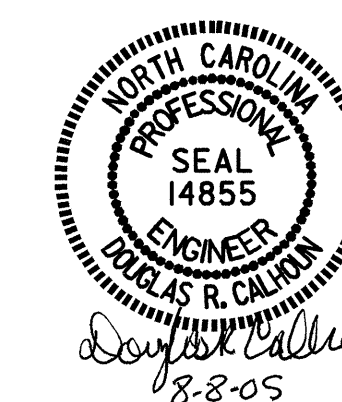
(DIMENSIONS SHOWN ARE TYPICAL FOR EACH VOID)

DEAD LOAD DEFLECTION AND CAMBER	
	3'-0" x 2'-9"
	0.6" Ø L.R. STRAND
	SPAN A
CAMBER (BEAM ALONE IN PLACE)	2 1/2"
DEFLECTION DUE TO CONCRETE WEARING SURFACE	7/16"
FINAL CAMBER	2 1/16"

PROJECT NO. B-3205
MADISON COUNTY
STATION: 14+81.00 -L-

SHEET 2 OF 2

STATE OF NORTH CAROLINA
DEPARTMENT OF TRANSPORTATION
RALEIGH
STANDARD
3'-0" X 2'-9"
PRESTRESSED CONCRETE
BOX BEAM UNIT



ASSEMBLED BY : T. A. HARRIS DATE : 7/20/05
CHECKED BY : T. L. CLELLAND DATE : 7/20/05
DRAWN BY : TLA 3/05 ADDED 7/11/05
CHECKED BY : G.M. 6/05

REVISIONS						SHEET NO.
NO.	BY:	DATE:	NO.	BY:	DATE:	S-7
1			3			TOTAL SHEETS
2			4			21