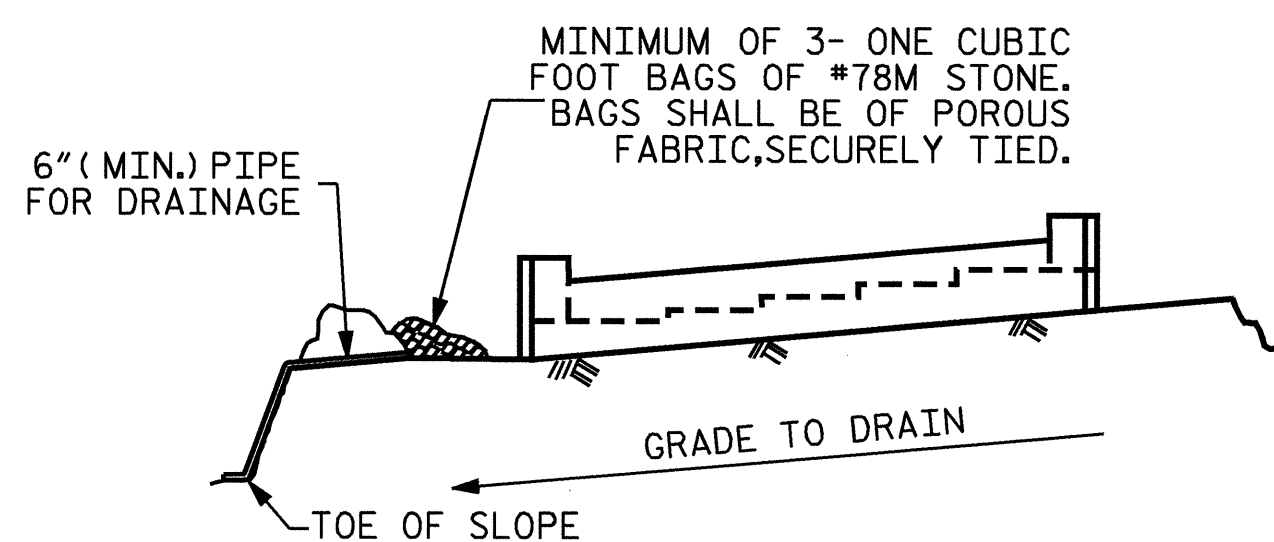
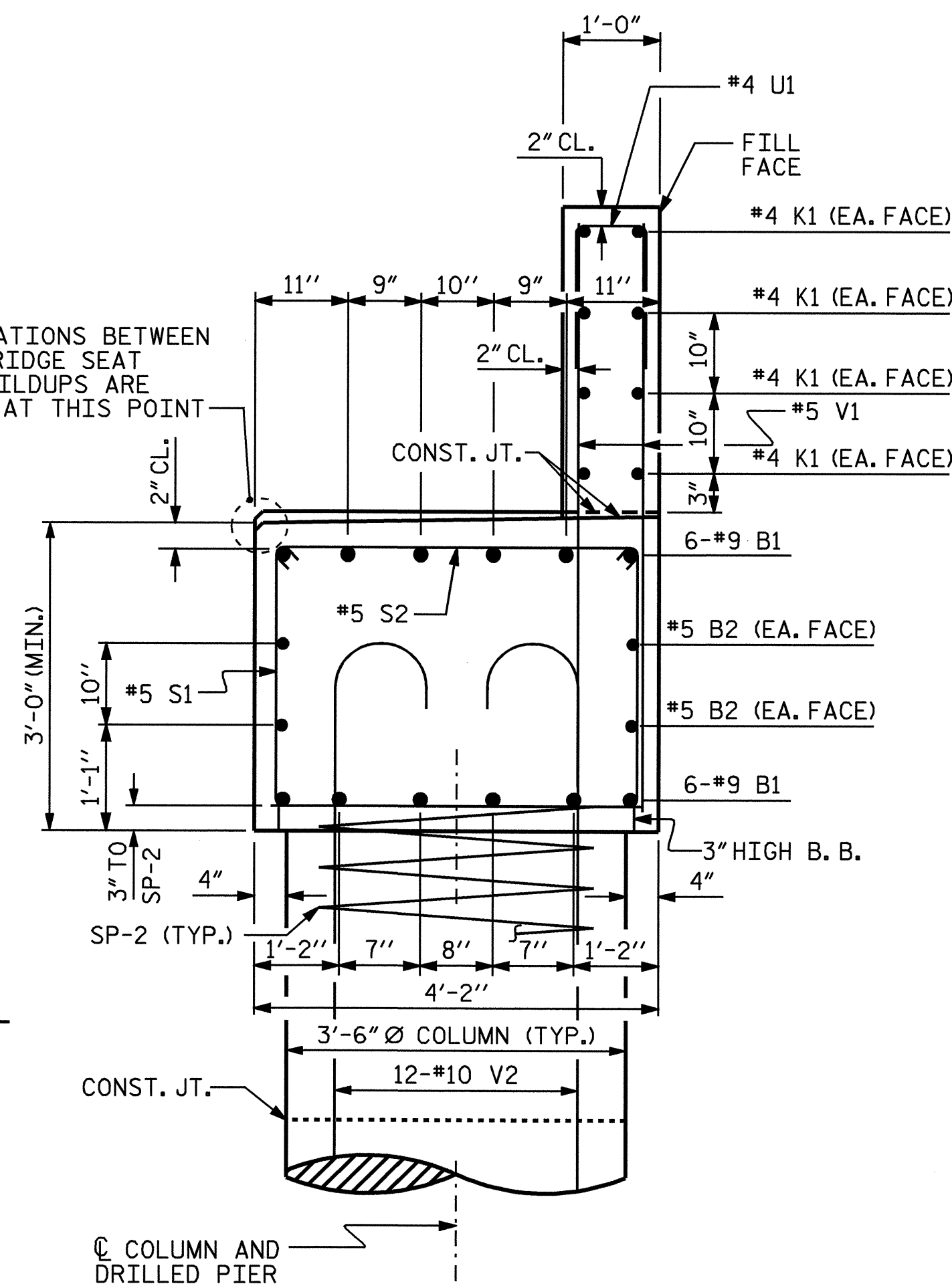


* ELEVATIONS BETWEEN BRIDGE SEAT BUILDUPS ARE TAKEN AT THIS POINT

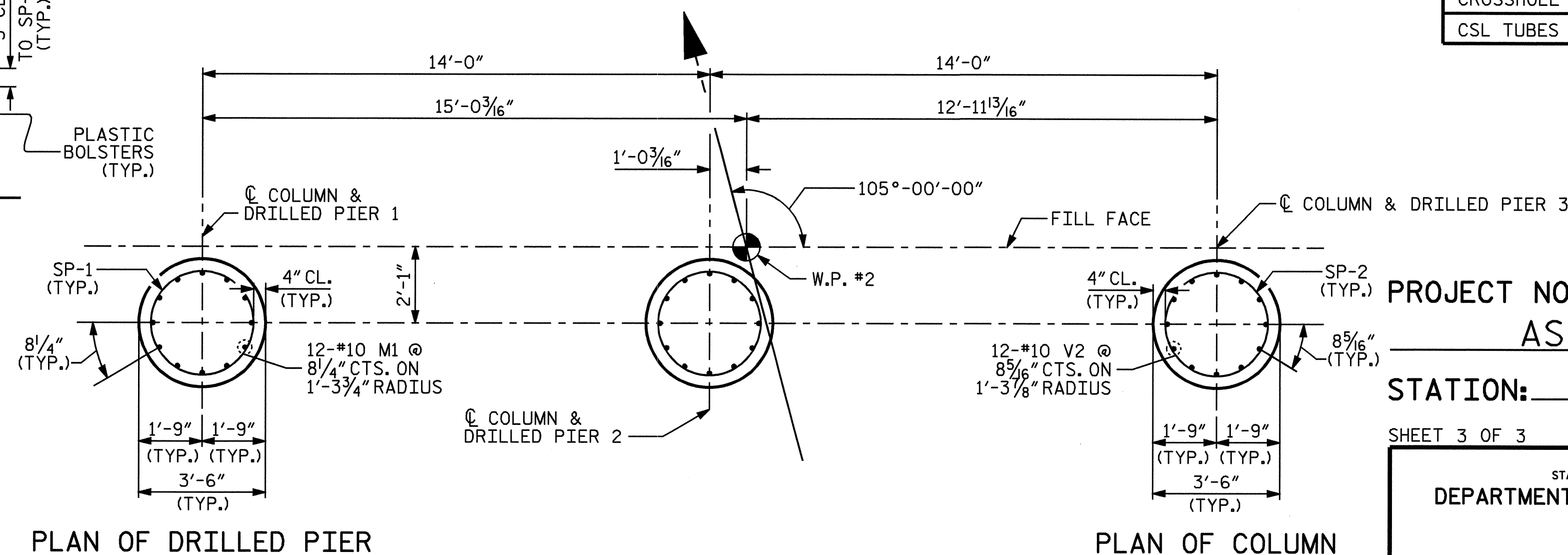
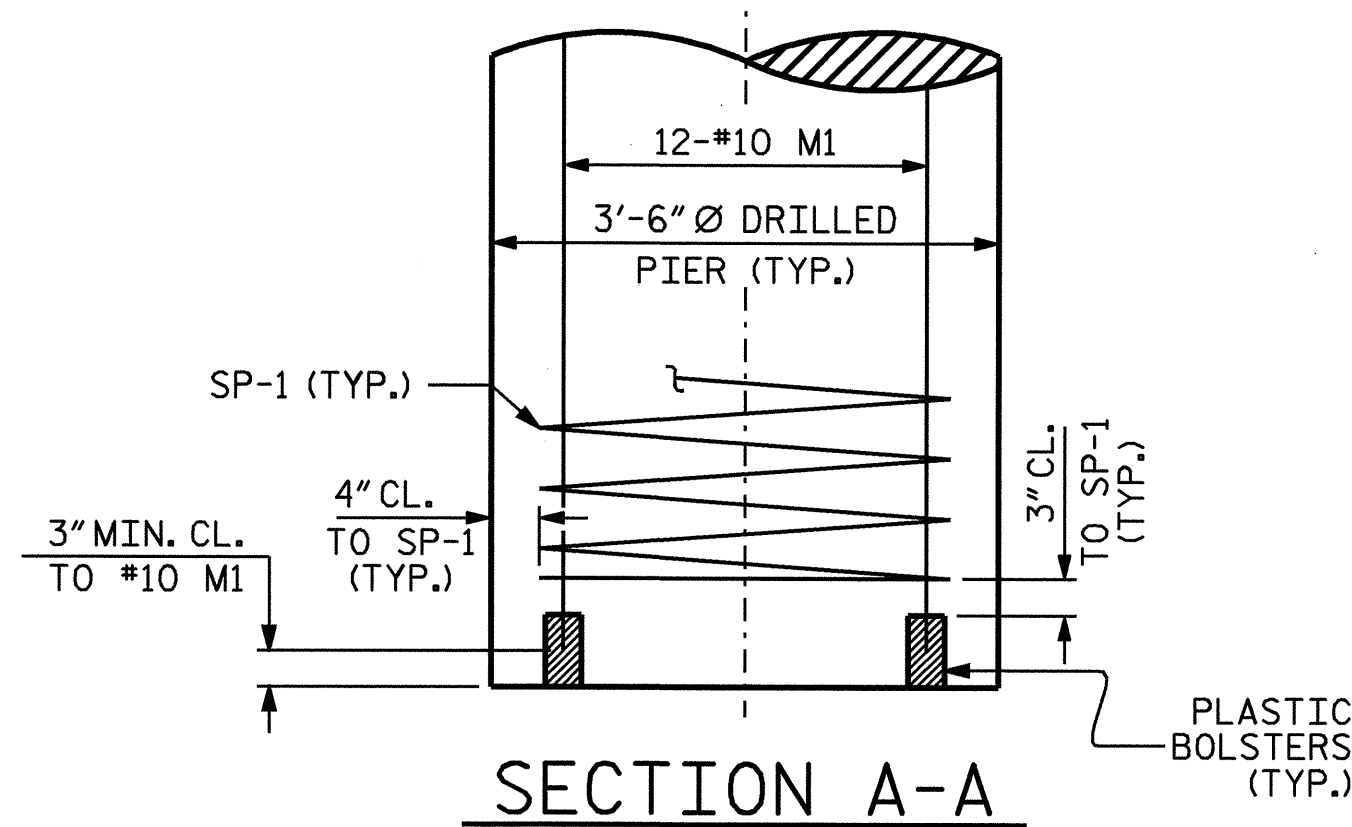


BAGGED STONE AND PIPE SHALL BE PLACED IMMEDIATELY AFTER COMPLETION OF END BENT EXCAVATION. PIPE MAY BE EITHER CONCRETE, CORRUGATED STEEL, CORRUGATED ALUMINUM ALLOY, OR CORRUGATED PLASTIC. PERFORATED PIPE WILL NOT BE ALLOWED.

BAGGED STONE SHALL REMAIN IN PLACE UNTIL THE ENGINEER DIRECTS THAT IT BE REMOVED. THE CONTRACTOR SHALL REMOVE AND DISPOSE OF SILT ACCUMULATIONS AT BAGGED STONE WHEN SO DIRECTED BY THE ENGINEER. BAGS SHALL BE REMOVED AND REPLACED WHENEVER THE ENGINEER DETERMINES THAT THEY HAVE DETERIORATED AND LOST THEIR EFFECTIVENESS.

NO SEPARATE PAYMENT WILL BE MADE FOR THIS WORK AND THE ENTIRE COST OF THIS WORK SHALL BE INCLUDED IN THE UNIT CONTRACT PRICE BID FOR THE SEVERAL PAY ITEMS.

TEMPORARY DRAINAGE AT END BENT



PLAN OF DRILLED PIER

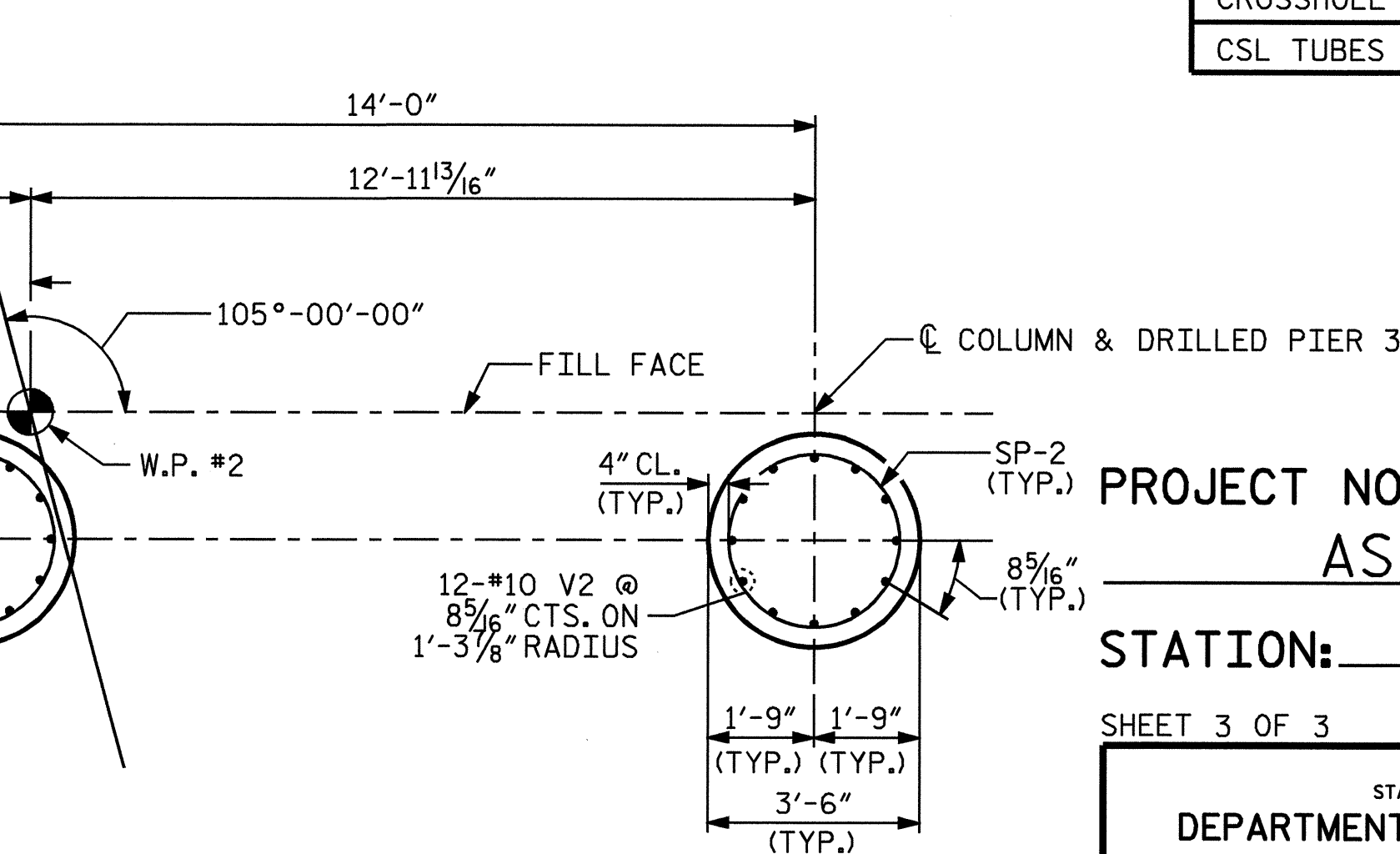
PLAN OF COLUMN

PLAN OF DRILLED PIERS

*** THE SP-1 SPIRAL REINFORCING STEEL SHALL BE W31 OR D-31 COLD DRAWN WIRE OR #5 PLAIN OR DEFORMED BAR.

*** THE SP-2 THRU SP-8 SPIRAL REINFORCING STEEL SHALL BE W20 OR D-20 COLD DRAWN WIRE OR #4 PLAIN OR DEFORMED BAR.

ALL BAR DIMENSIONS ARE OUT TO OUT.



BILL OF MATERIAL

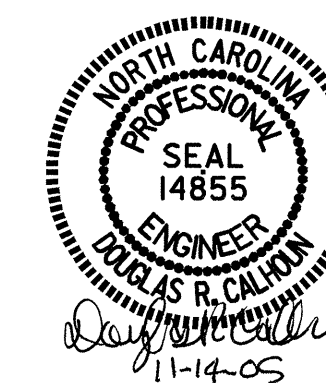
END BENT 2					
BAR NO.	SIZE	TYPE	LENGTH	WEIGHT	
B1	12	9	1	40'-8"	1659
B2	4	5	STR	38'-3"	160
H1	10	5	2	8'-11"	93
H2	10	5	2	9'-2"	96
H3	10	5	3	8'-10"	92
H4	10	5	3	8'-9"	91
K1	16	4	STR	20'-4"	217
K2	8	4	STR	3'-1"	16
M1	36	10	STR	22'-3"	3447
S1	28	5	4	10'-0"	292
S2	28	5	5	4'-9"	139
U1	32	4	6	3'-8"	78
V1	64	5	STR	5'-9"	384
V2	36	10	7	5'-2"	800
V3	16	5	STR	7'-5"	124
V4	10	5	STR	7'-8"	80
V5	16	5	STR	7'-7"	127
V6	10	5	STR	7'-9"	81
TOTAL REINFORCING STEEL					LBS. 7976
SP-1	3	***	8	360'-11"	1129
SP-2	3	***	9	138'-3"	277
SPIRAL COLUMN REINFORCING STEEL					LBS. 1406
CLASS A CONCRETE BREAKDOWN					
POUR 2 COLUMNS					3.5 C.Y.
POUR 3 CAP AND LOWER PART OF WINGS					19.3 C.Y.
POUR 4 BACKWALL AND UPPER PART OF WINGS					7.7 C.Y.
TOTAL CLASS A CONCRETE					30.5 C.Y.
3'-6" Ø DRILLED PIER					
DRILLED PIER CONCRETE BREAKDOWN					
POUR 1 DRILLED PIERS					18.2 C.Y.
3'-6" DIA. DRILLED PIERS IN SOIL:					
					21.0 LIN. FT.
3'-6" DIA. DRILLED PIERS NOT IN SOIL:					
					30.0 LIN. FT.
SID INSPECTION					2 EACH
CROSSHOLE SONIC LOGGING:					1 EACH
CSL TUBES :					234.0 LIN. FT.

PROJECT NO. **B-3805**
 ASHE COUNTY
 STATION: **10+63.50 -L-**

SHEET 3 OF 3

STATE OF NORTH CAROLINA
 DEPARTMENT OF TRANSPORTATION
 RALEIGH

**SUBSTRUCTURE
 END BENT 2**



REVISIONS						SHEET NO.
NO.	BY:	DATE:	NO.	BY:	DATE:	TOTAL SHEETS
1			3			26
2			4			

DRAWN BY : **T.L. CLELLAND** DATE : **11/1/04**
 CHECKED BY : **J.MYA** DATE : **8/19/05**