

STATE	PROJECT NO.	SHEET NO.	TOTAL SHEETS
N.C.	7CR.10011.6, ETC.	14	15

7CR.10011.6; 7CR.20011.6; 7CR.300101.6;
 7CR.300105.6; 7CR.300107.6; 7CR.300116.6;
 7CR.300123.6;

STATE OF
 NORTH CAROLINA
 DEPT. OF TRANSPORTATION
 DIVISION OF HIGHWAYS
 RALEIGH, N.C.

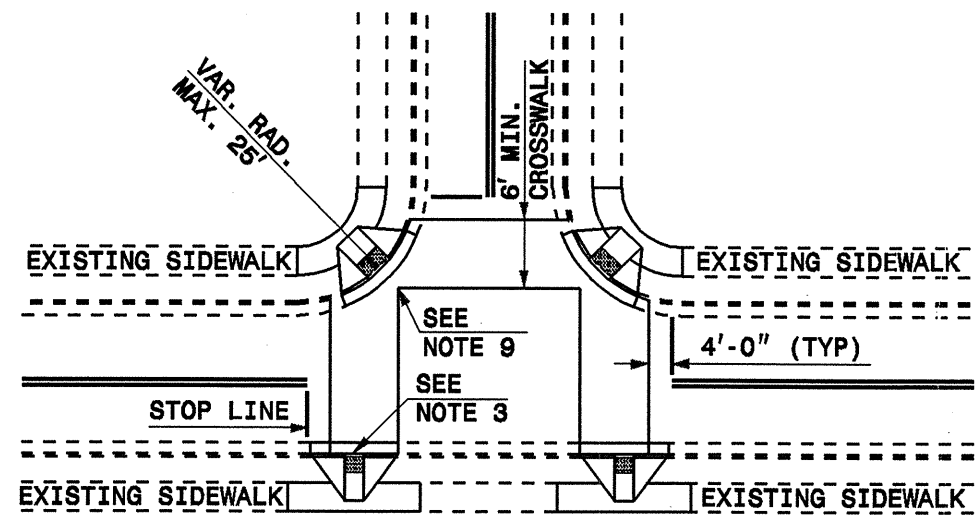
ENGLISH DETAIL DRAWING FOR
WHEELCHAIR RAMP
 CURB CUT

SHEET 4 OF 5
848D06

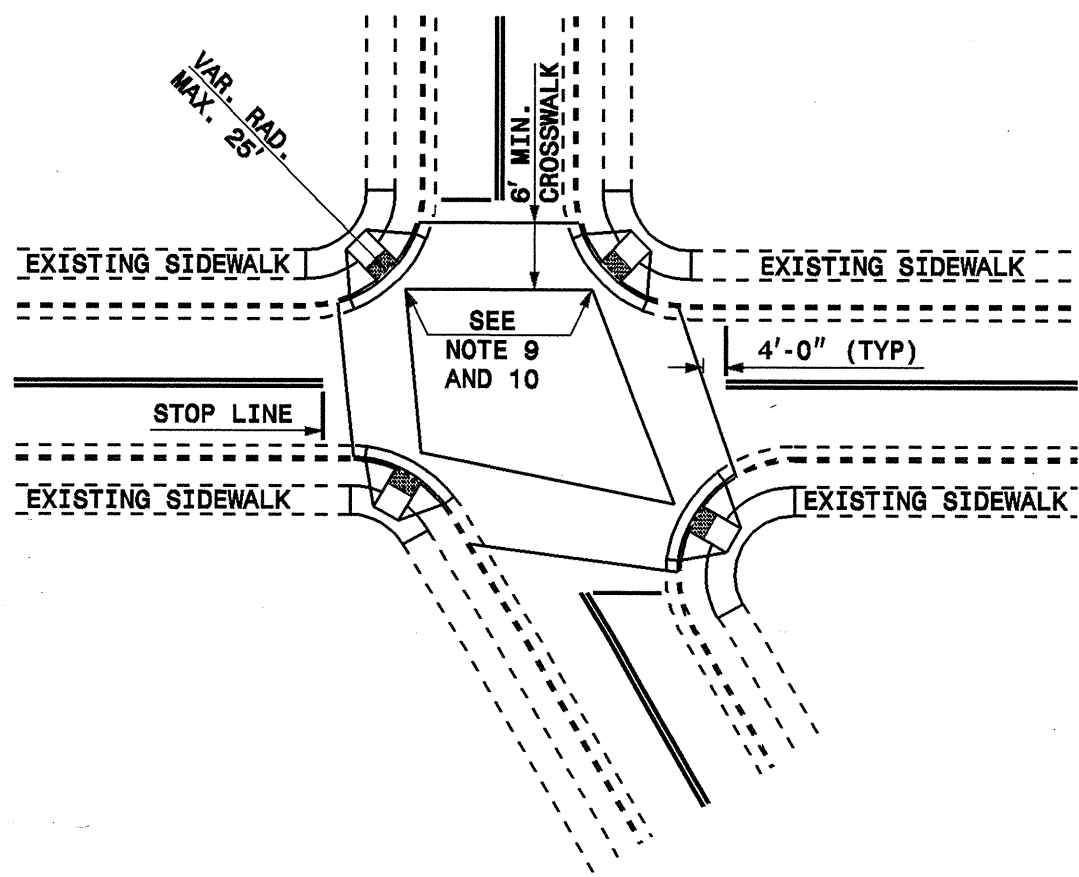
STATE OF
 NORTH CAROLINA
 DEPT. OF TRANSPORTATION
 DIVISION OF HIGHWAYS
 RALEIGH, N.C.

ENGLISH DETAIL DRAWING FOR
WHEELCHAIR RAMP
 CURB CUT

SHEET 4 OF 5
848D06

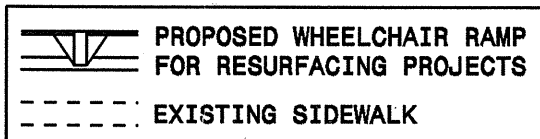


DETAIL SHOWING TYPICAL LOCATION OF WHEELCHAIR RAMP,
 PEDESTRIAN CROSSWALKS AND STOP LINES FOR TEE INTERSECTIONS



DETAIL SHOWING TYPICAL LOCATION OF WHEELCHAIR RAMP,
 PEDESTRIAN CROSSWALKS AND STOP LINES

RESURFACING PROJECTS



ALLOWABLE LOCATIONS
 DIAGONAL RAMP RADII...MAX. 25'

03-NOV-2005 08:53
 resurfacing\division 7\7cr-10011.6,etc\wheelchair-21.dgn
 5/28/99