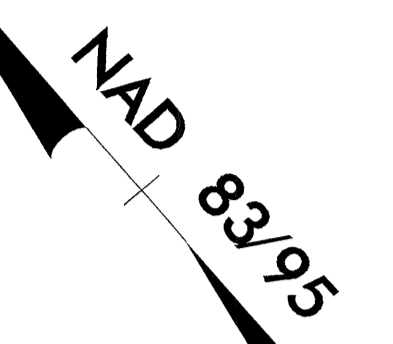


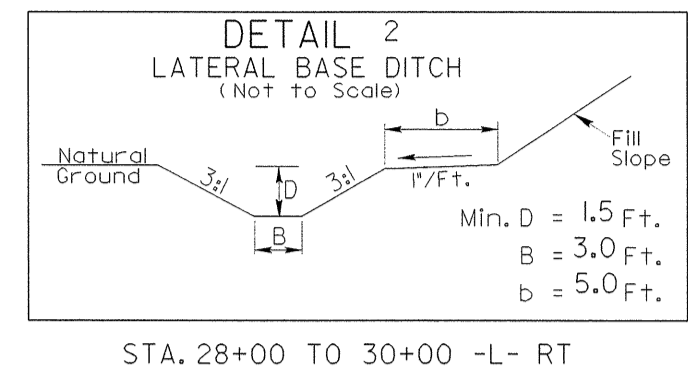
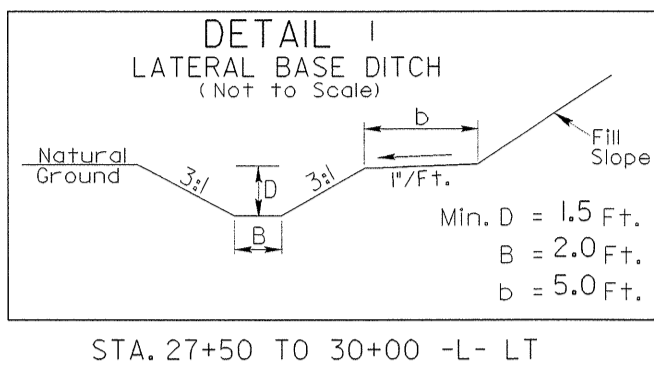
UTILITIES BY OTHERS

NOTE:
ALL PROPOSED UTILITY WORK
SHOWN ON THIS SHEET WILL
BE DONE BY OTHERS



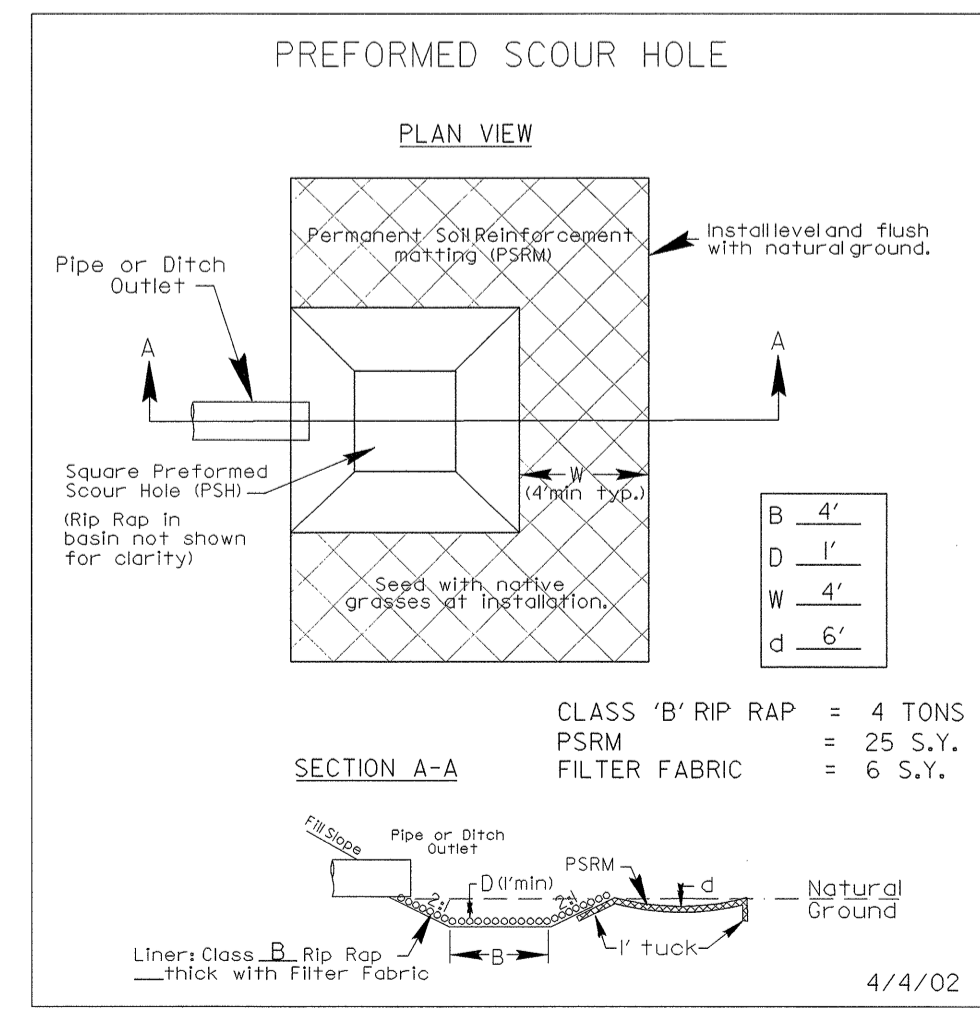
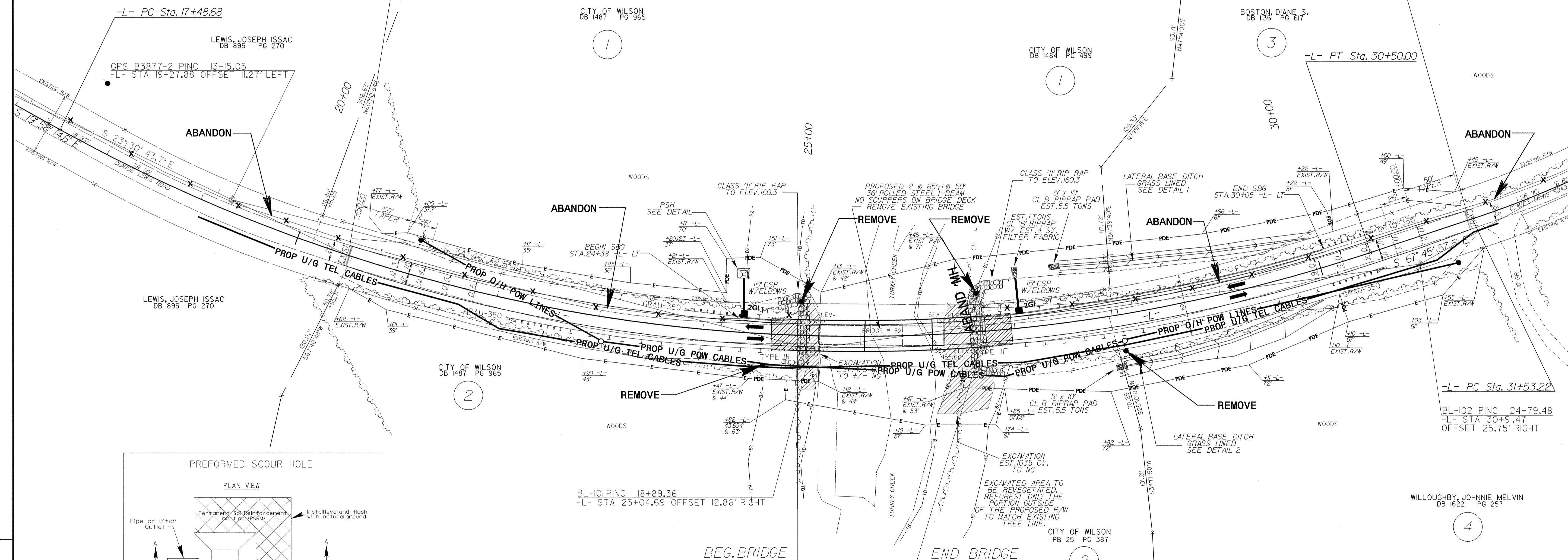
PI Sta 24+39.90 Δ = 47° 47' 42.9" (LT) D = 3° 40' 22.1" L = 1,301.33' T = 691.22' R = 1,560.00'

PI Sta 32+47.58 Δ = 10° 46' 51.4" (LT) D = 5° 43' 46.5" L = 188.16' T = 94.36' R = 1,000.00'



-L- STA. 20+50.00 BEGIN STATE PROJECT B-3877
-L- STA. 20+50.00 BEGIN F.A PROJECT BRZ-110(K7)

-L- STA. 31+50.00 END STATE PROJECT B-3877
-L- STA. 31+50.00 END F.A PROJECT BRZ-110(K7)



DATUM DESCRIPTION

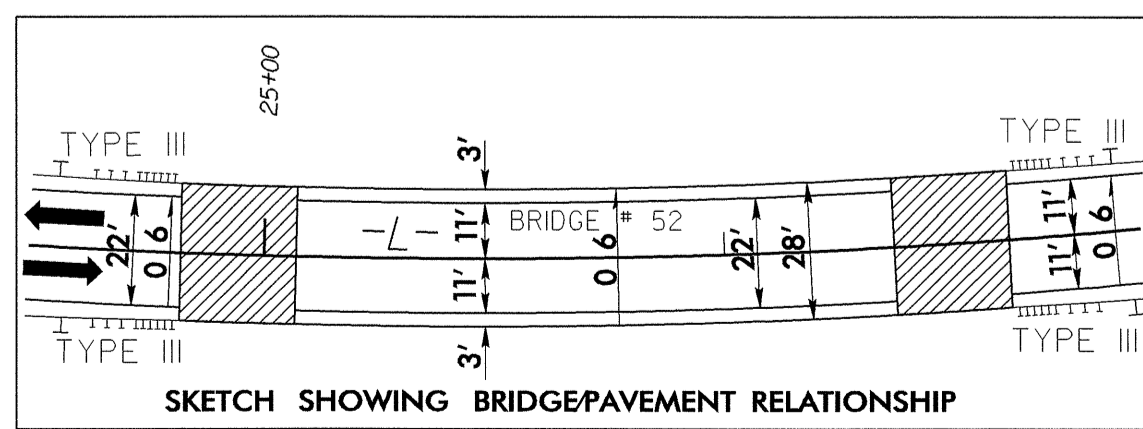
THE LOCALIZED COORDINATE SYSTEM DEVELOPED FOR THIS PROJECT IS BASED ON THE STATE PLANE COORDINATES ESTABLISHED BY NCDOT FOR MONUMENT "B3877-2"

WITH NAD 1983/95 STATE PLANE GRID COORDINATES OF NORTHING: 730123.3659(1) EASTING: 2248924527(11)

THE AVERAGE COMBINED GRID FACTOR USED ON THIS PROJECT (GROUND TO GRID) IS: 0.99990812

THE N.C. LAMBERT GRID BEARING AND LOCALIZED HORIZONTAL GROUND DISTANCE FROM "B3877-2" TO -L- STA 20+50.00 IS S 23° 30' 23.48" E @ 122.1652 FT.

ALL LINEAR DIMENSIONS ARE LOCALIZED HORIZONTAL DISTANCES VERTICAL DATUM USED IS NAVD 88



NOTE: SEE SHEET 5 FOR -L- PROFILE

REVISIONS

8/17/99
SYSTEMS
DESIGN
ELECTRICAL