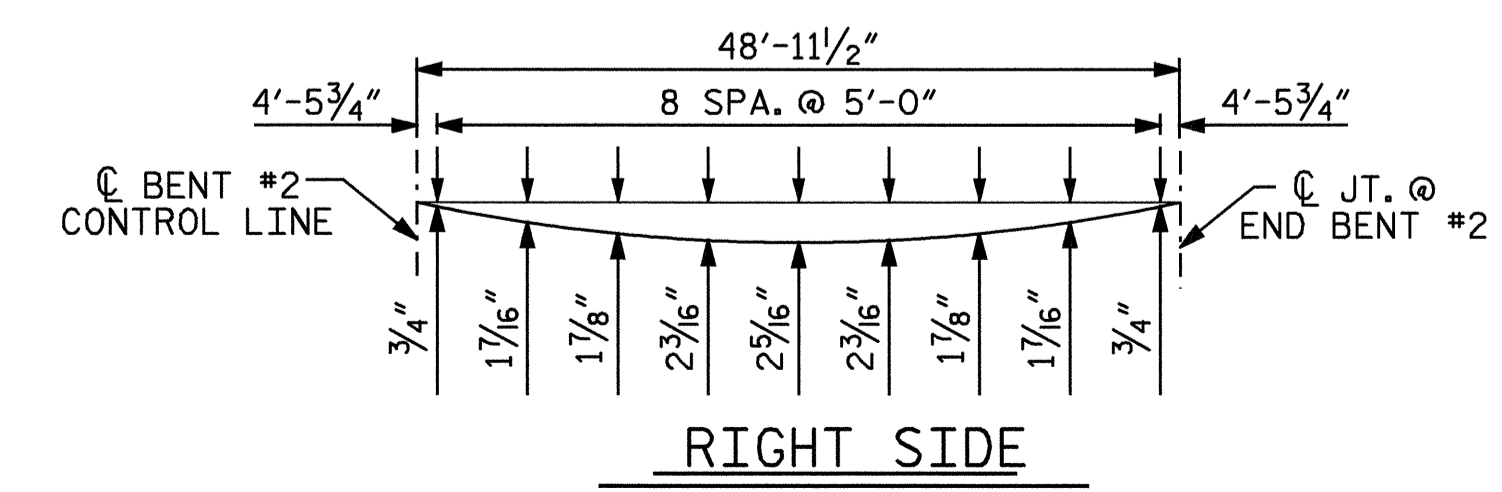
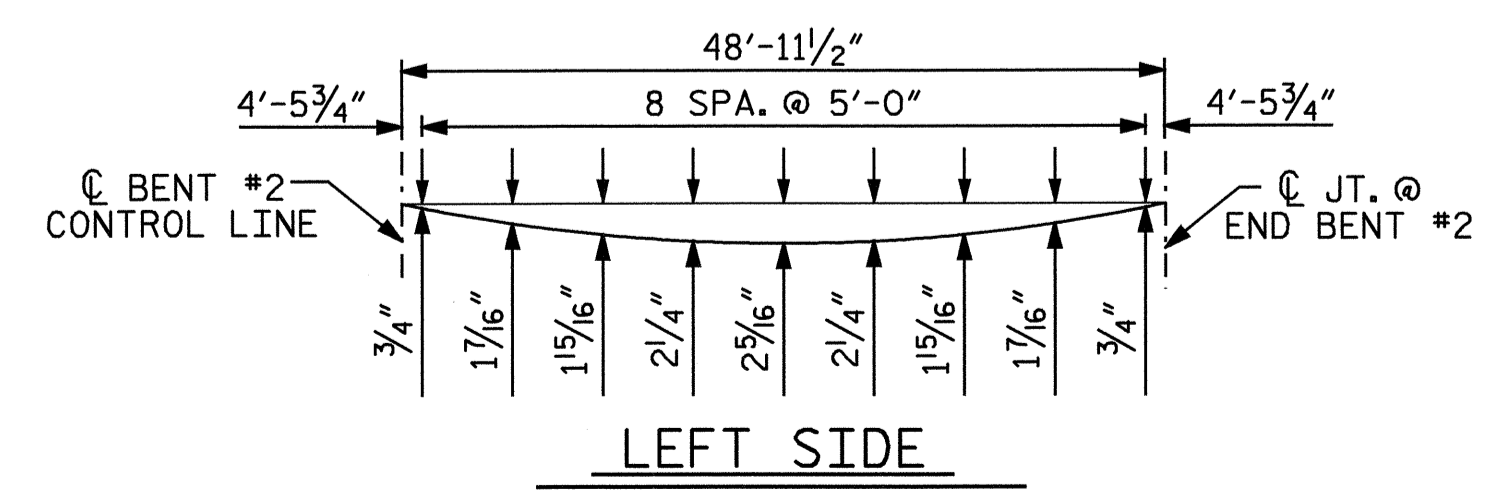
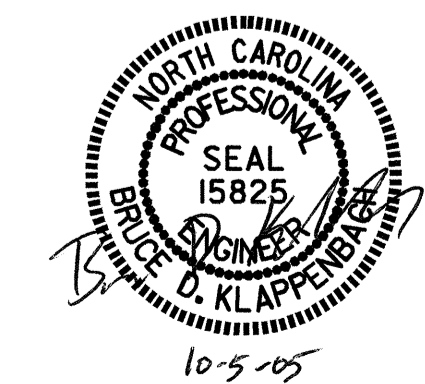
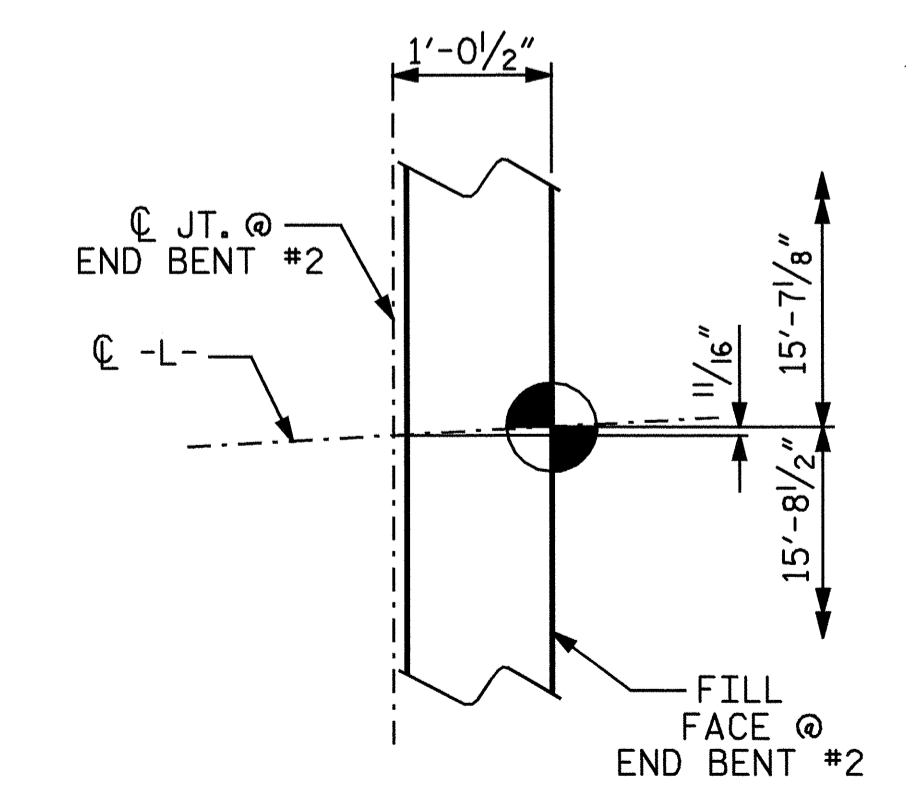


PLAN OF SPAN "C"

FOR POURING SEQUENCE, SEE "SUPERSTRUCTURE BILL OF MATERIAL" SHEET.
 FOR LONGITUDINAL BARS IN TOP OF SLAB, SEE "B BAR LAYOUT" SHEET.
 "A" BARS TO BE PLACED PERPENDICULAR TO LONG CHORD.
 FOR SECTION VIEWS, SEE "TYPICAL SECTION" SHEETS.
 FOR REINFORCING STEEL IN BARRIER RAIL, SEE "CONCRETE BARRIER RAIL" SHEETS.
 FOR LOCATION OF INTERMEDIATE DIAPHRAGMS, SEE "GIRDER LAYOUT" SHEET.



ARC OFFSETS-SPAN "B"



PROJECT NO. B-3877
 NASH COUNTY
 STATION: 25+80.65 -L-

SHEET 3 OF 3

STATE OF NORTH CAROLINA
 DEPARTMENT OF TRANSPORTATION
 RALEIGH

SUPERSTRUCTURE
 PLAN OF SPAN "C"

REVISIONS						SHEET NO.
NO.	BY:	DATE:	NO.	BY:	DATE:	S-9
1			3			TOTAL SHEETS
2			4			33

DRAWN BY: M. G. SHAIKH DATE: 12-15-04
 CHECKED BY: D. A. GLADDEN DATE: 04-25-05