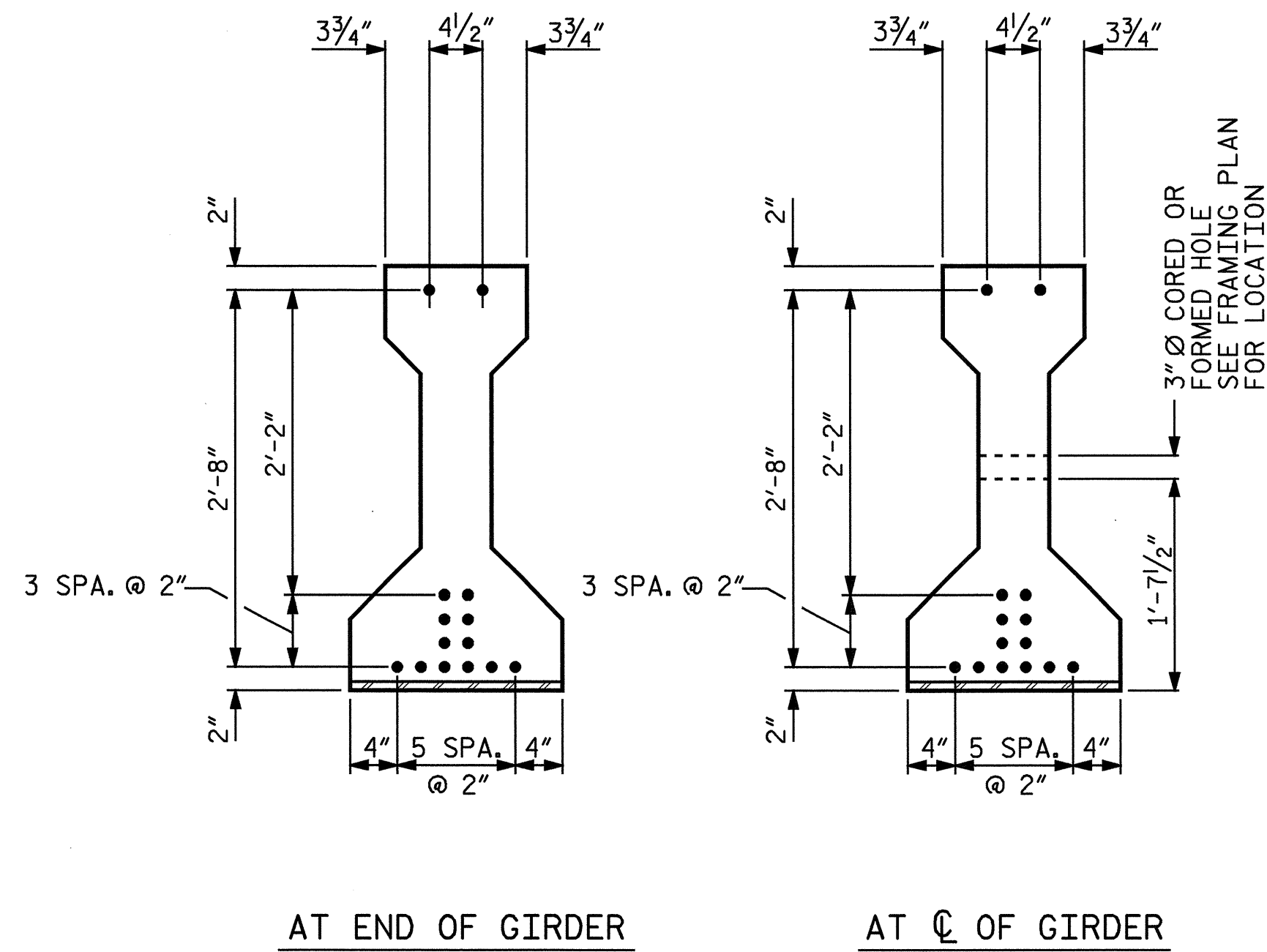


SECTION A-A

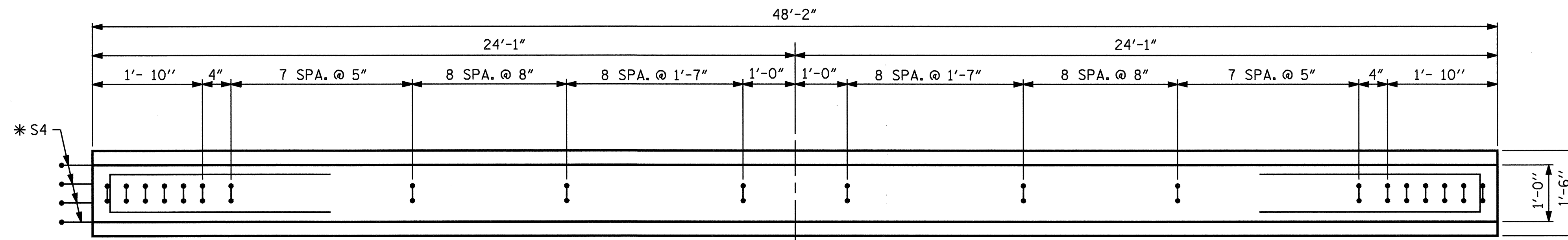
SECTION B-B



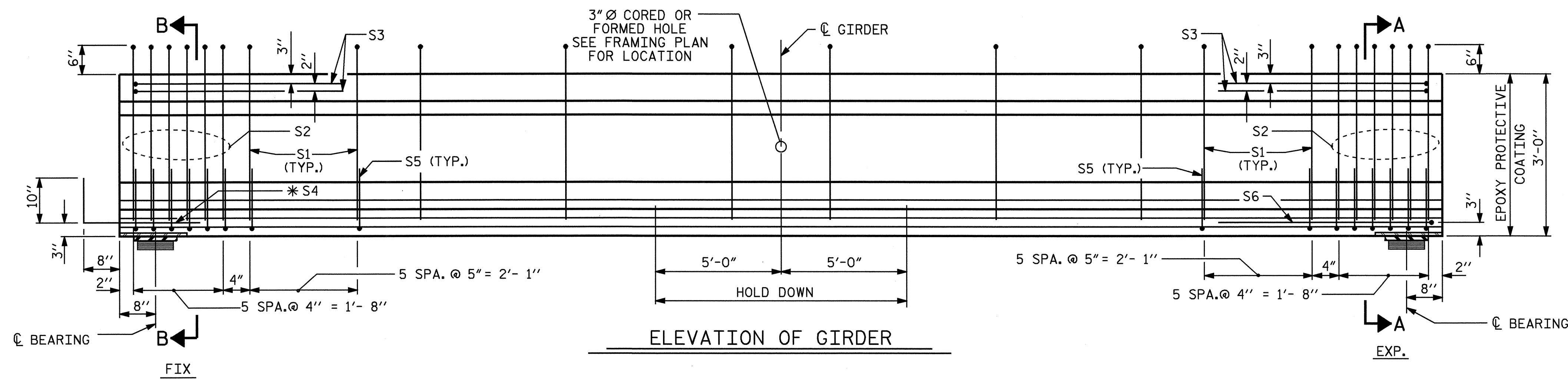
AT END OF GIRDER

AT ϕ OF GIRDER

$\frac{1}{2}$ " ϕ LOW RELAXATION STRAND LAYOUT



PLAN OF GIRDER



ELEVATION OF GIRDER

0.6" ϕ L. R. GRADE 270 STRANDS

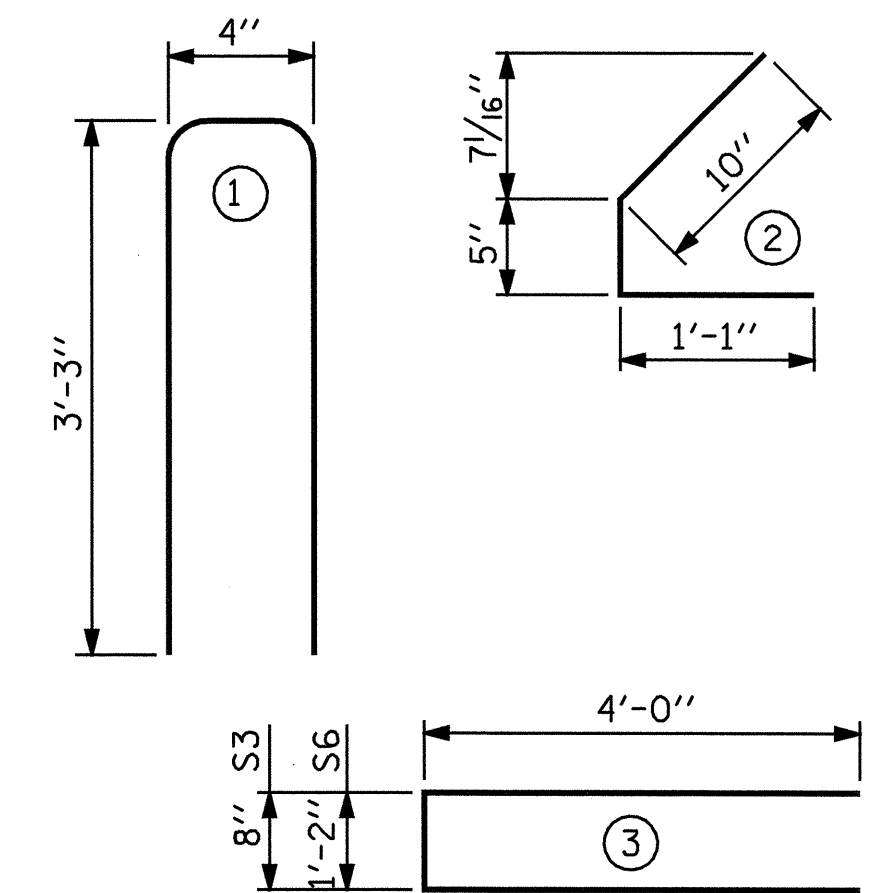
AREA (SQUARE INCHES)	ULTIMATE STRENGTH (LBS. PER STRAND)	APPLIED PRESTRESS (LBS. PER STRAND)
0.217	58,600	43,950

REINFORCING STEEL FOR ONE GIRDER					
BAR	NUMBER	SIZE	TYPE	LENGTH	WEIGHT
S1	48	#4	1	6'-10"	219
S2	12	#5	1	6'-10"	86
S3	4	#4	3	8'-8"	23
*S4	4	#5	STR	3'-8"	15
S5	48	#4	2	2'-4"	75
S6	1	#4	3	9'-2"	6

* NOTE: S4 BARS SHALL BE BENT BEFORE SHIPMENT. HEAT BENDING SHALL NOT BE ALLOWED.

BAR TYPES

ALL BAR DIMENSIONS ARE OUT-TO-OUT



QUANTITIES FOR ONE GIRDER

	REINFORCING STEEL	6,400 PSI CONCRETE	0.6" ϕ L.R. STRANDS
	LB.	C.Y.	No.
SPAN C	424	4.6	14

GIRDERS REQUIRED

NUMBER	LENGTH	TOTAL LENGTH
4	48'-2"	192'-8"

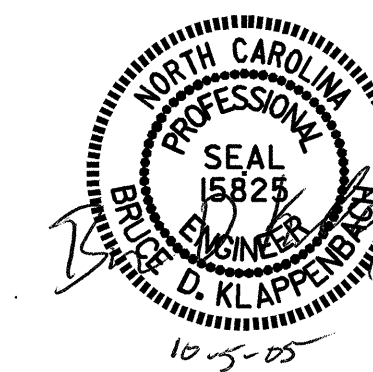
PROJECT NO. B-3877
NASH COUNTY
 STATION: 25+80.65 -L-

STATE OF NORTH CAROLINA
 DEPARTMENT OF TRANSPORTATION
 RALEIGH

AASHTO TYPE II
 PRESTRESSED CONCRETE GIRDER
 CONTINUOUS FOR LIVE LOAD
 SPAN C

NOVEMBER 1991

REVISIONS						SHEET NO. S-14
NO.	BY:	DATE:	NO.	BY:	DATE:	
1			3			TOTAL SHEETS 33
2			4			



ASSEMBLED BY : M. G. SHAIKH DATE : 01-21-05
 CHECKED BY : D. A. GLADDEN DATE : 04-27-05
 DRAWN BY : ELR 8/91
 CHECKED BY : GRP 8/91
 REV. 7/17/98 RWW/LES
 REV. 8/16/99 RWW/LES
 REV. 10/17/00 RWW/LES