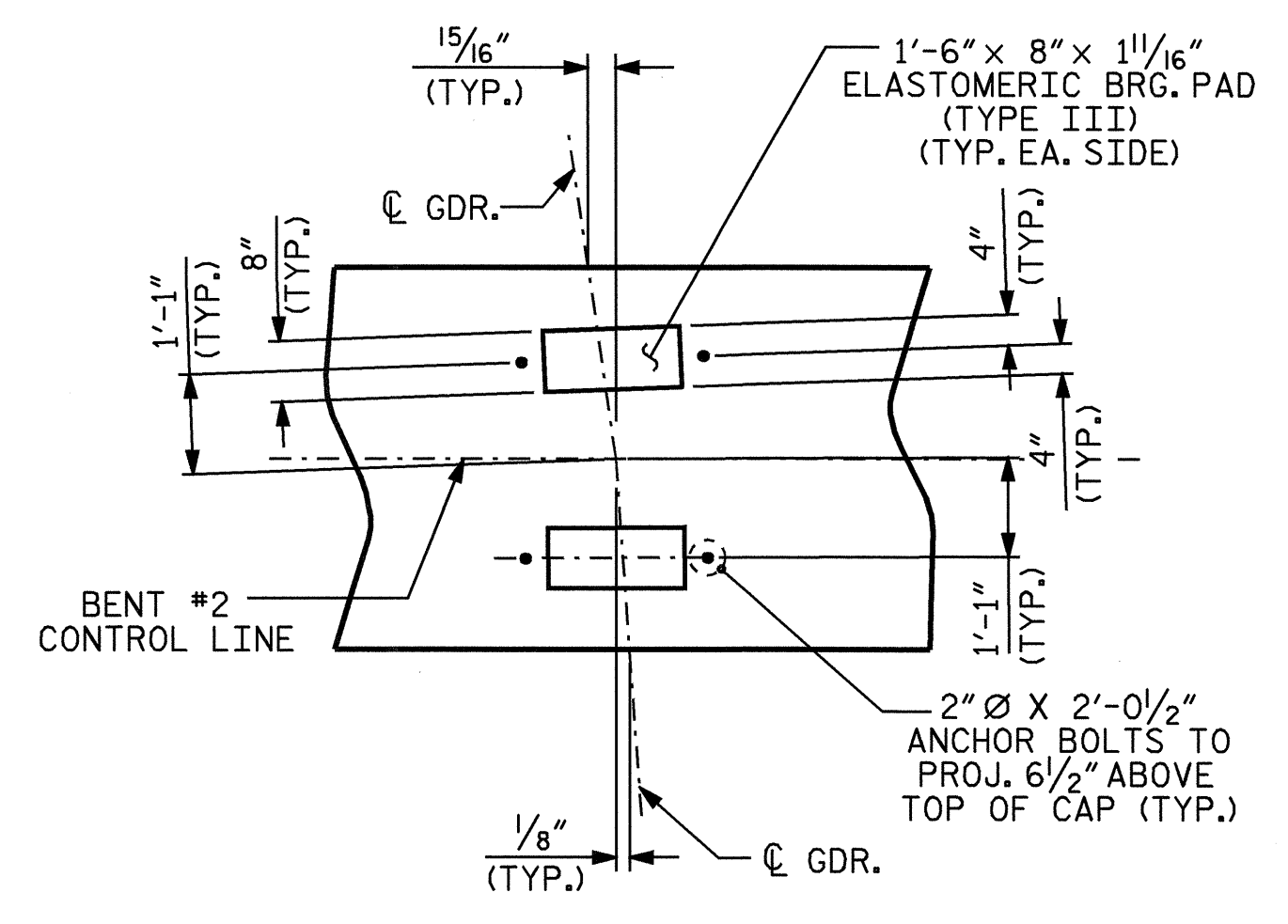


**PLAN**



**"DETAIL A"**

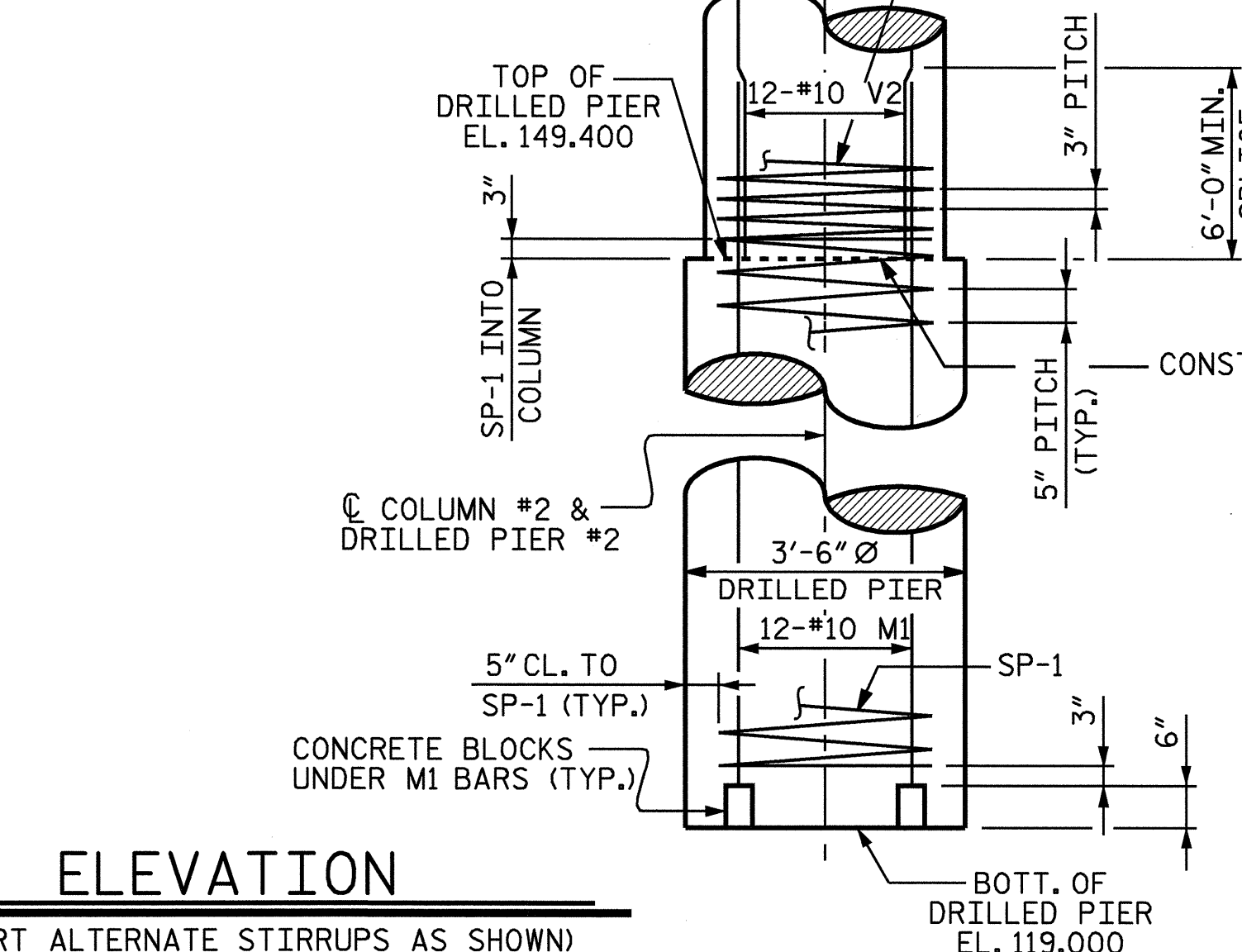
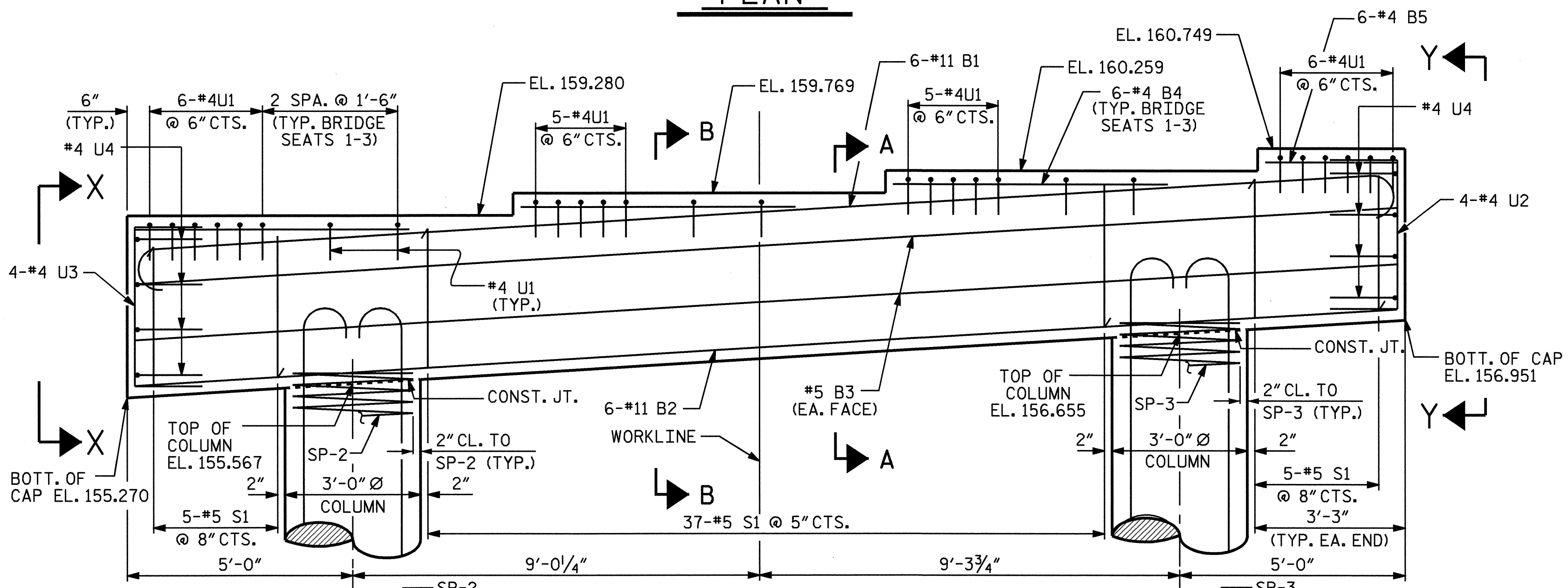
**NOTES**

STIRRUPS IN CAP MAY BE SHIFTED AS NECESSARY TO CLEAR ANCHOR BOLTS.

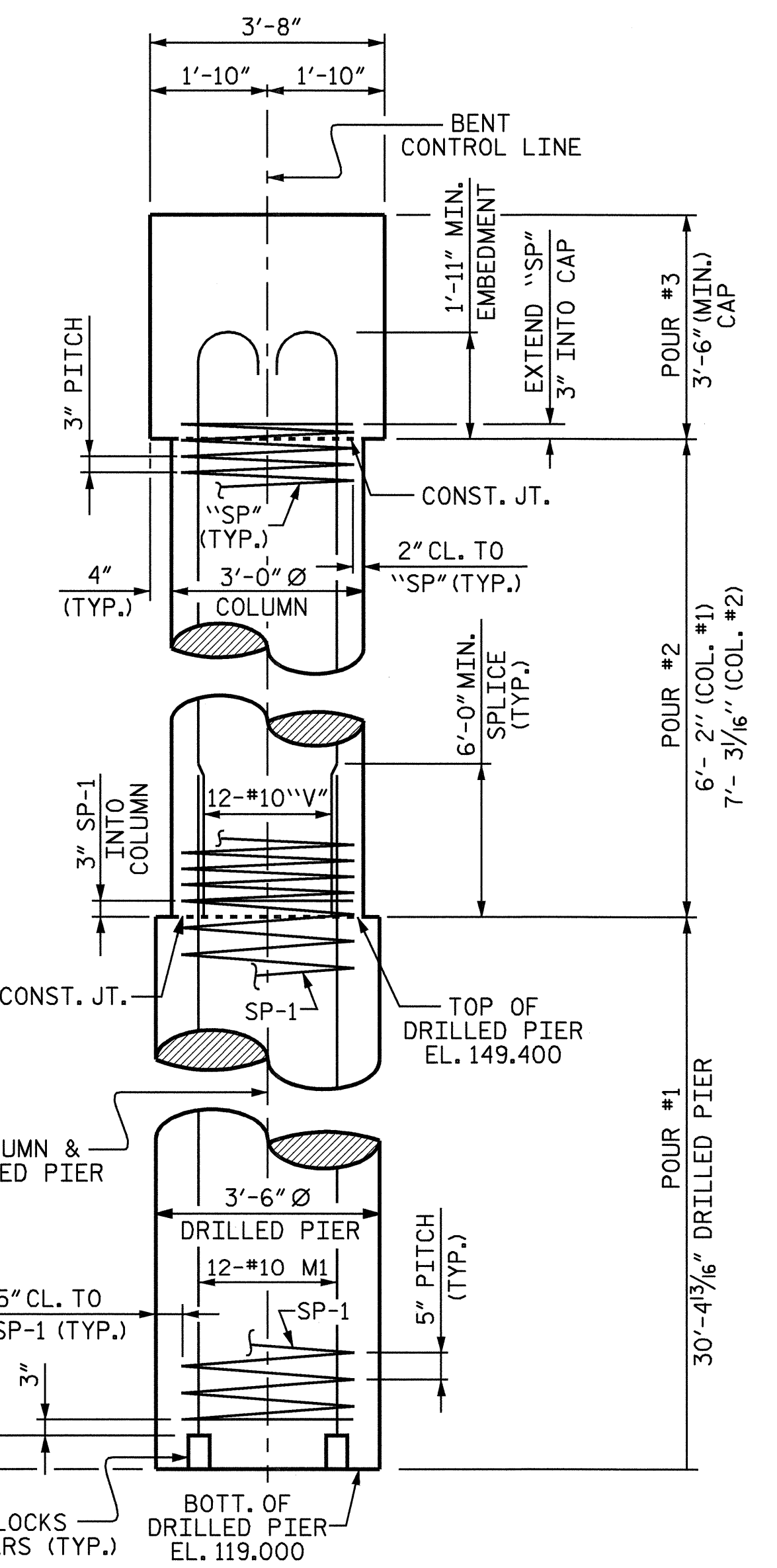
HOOKS ON "V" BARS MAY BE TURNED AS NECESSARY FOR PLACING REINFORCING STEEL.

ALL STEEL IN THE DRILLED PIERS IS INCLUDED IN THE PAY ITEMS FOR "REINFORCING STEEL" AND "SPIRAL COLUMN REINFORCING STEEL".

THE CONTRACTOR'S ATTENTION IS CALLED TO THE FACT THAT THE LONGITUDINAL REINFORCEMENT FOR THE DRILLED PIERS IS DETAILED WITH 3 FEET OF EXTRA LENGTH.



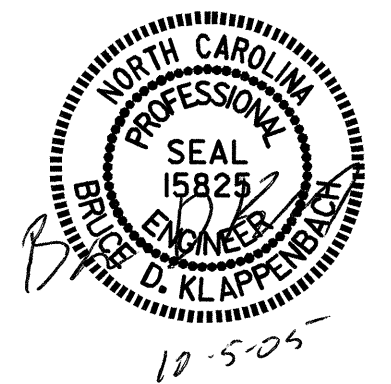
**ELEVATION**  
(INVERT ALTERNATE STIRRUPS AS SHOWN)



**END ELEVATION**

PROJECT NO. B-3877  
NASH COUNTY  
STATION: 25+80.65 -L-

SHEET 1 OF 2  
STATE OF NORTH CAROLINA  
DEPARTMENT OF TRANSPORTATION  
RALEIGH  
**SUBSTRUCTURE BENT #2**



DRAWN BY: M. G. SHAIKH DATE: 02-10-05  
CHECKED BY: J. B. WILSON/K.M.M. DATE: 08-08-05

REVISIONS						SHEET NO.
NO.	BY:	DATE:	NO.	BY:	DATE:	
1			3			S-24
2			4			TOTAL SHEETS 33

05-OCT-2005 15:15  
R:\Structures\mshalkh\Microstation\B-3877.ed.B\*.01.dgn  
mshalkh