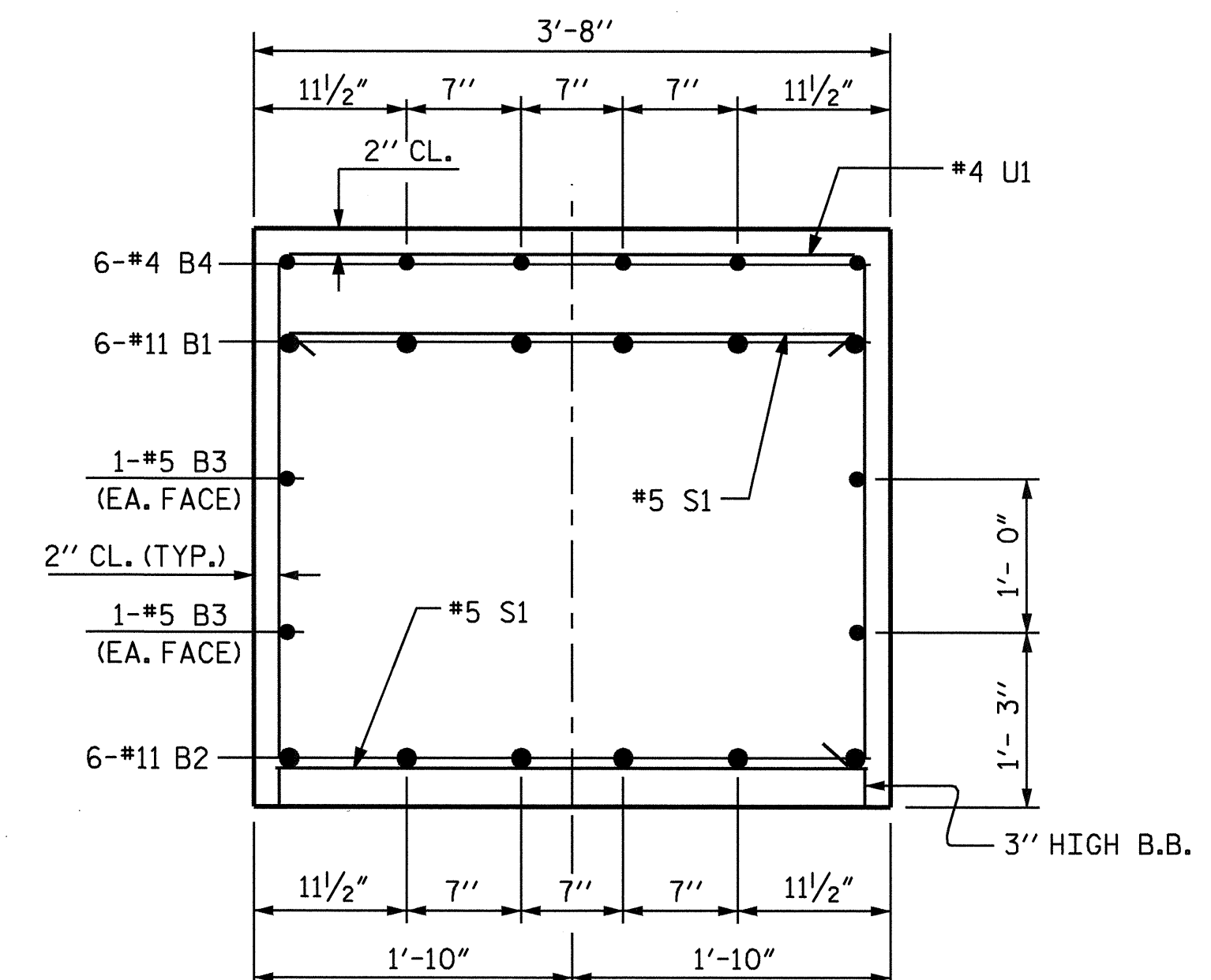
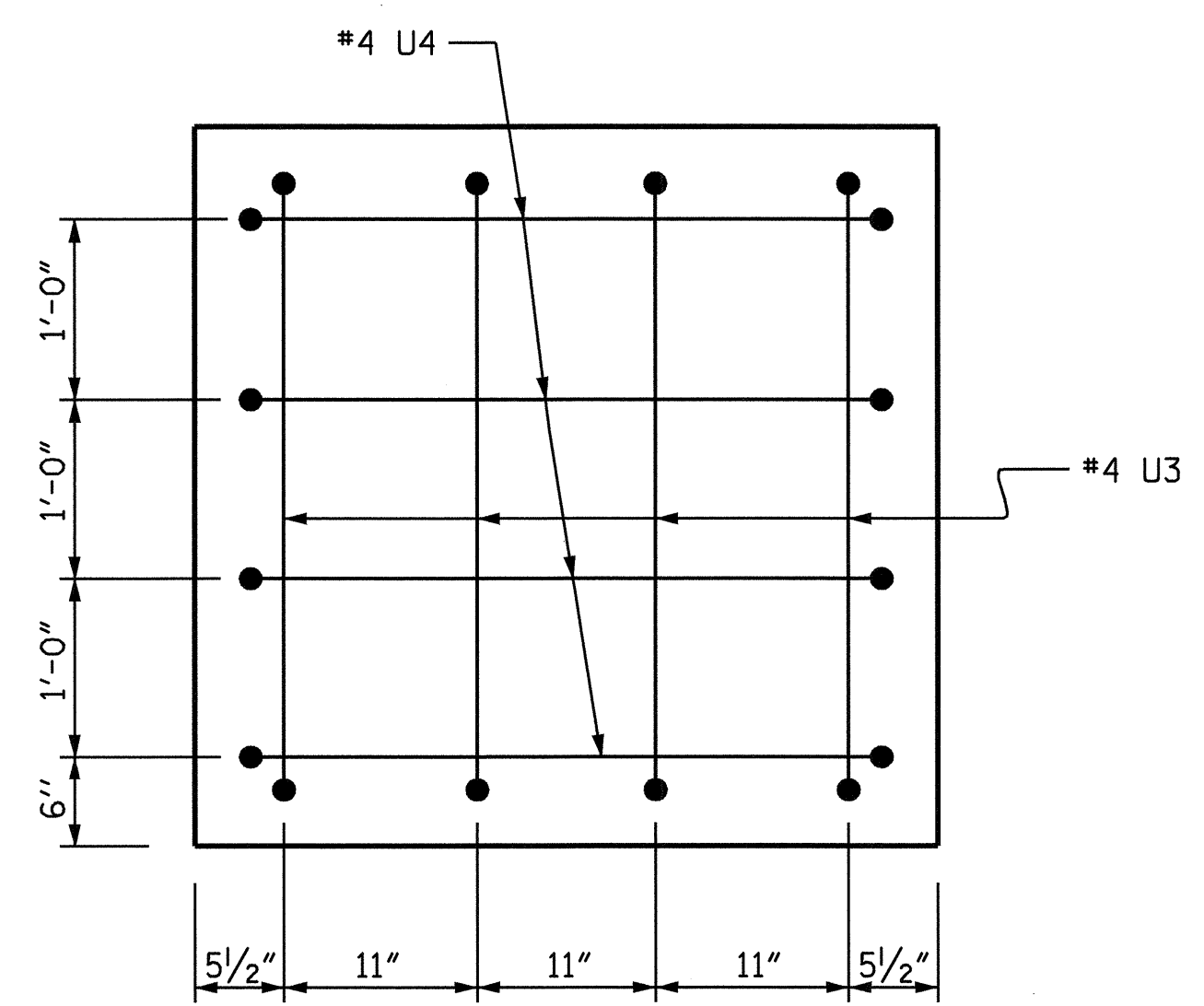


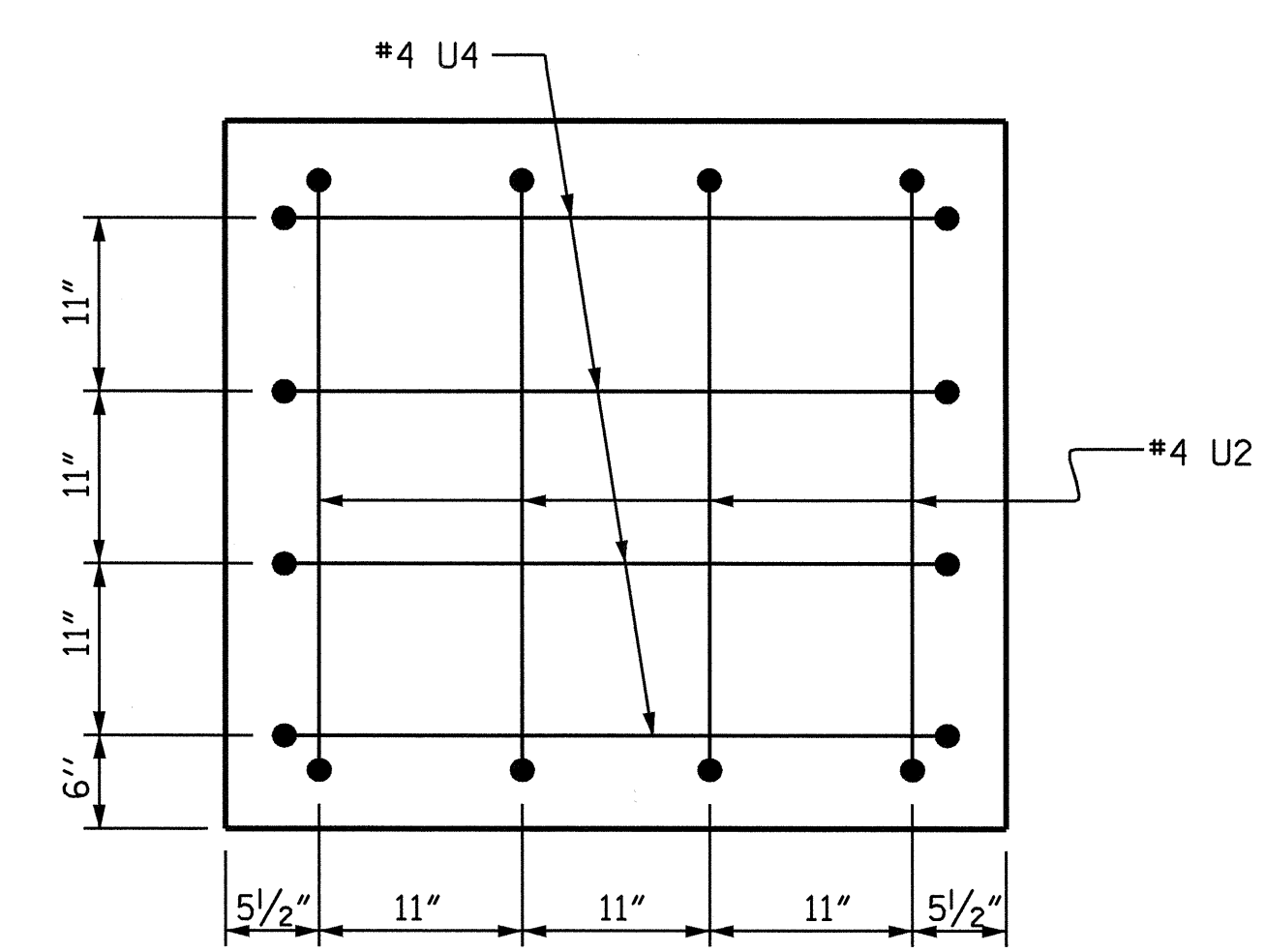
SECTION A-A



SECTION B-B

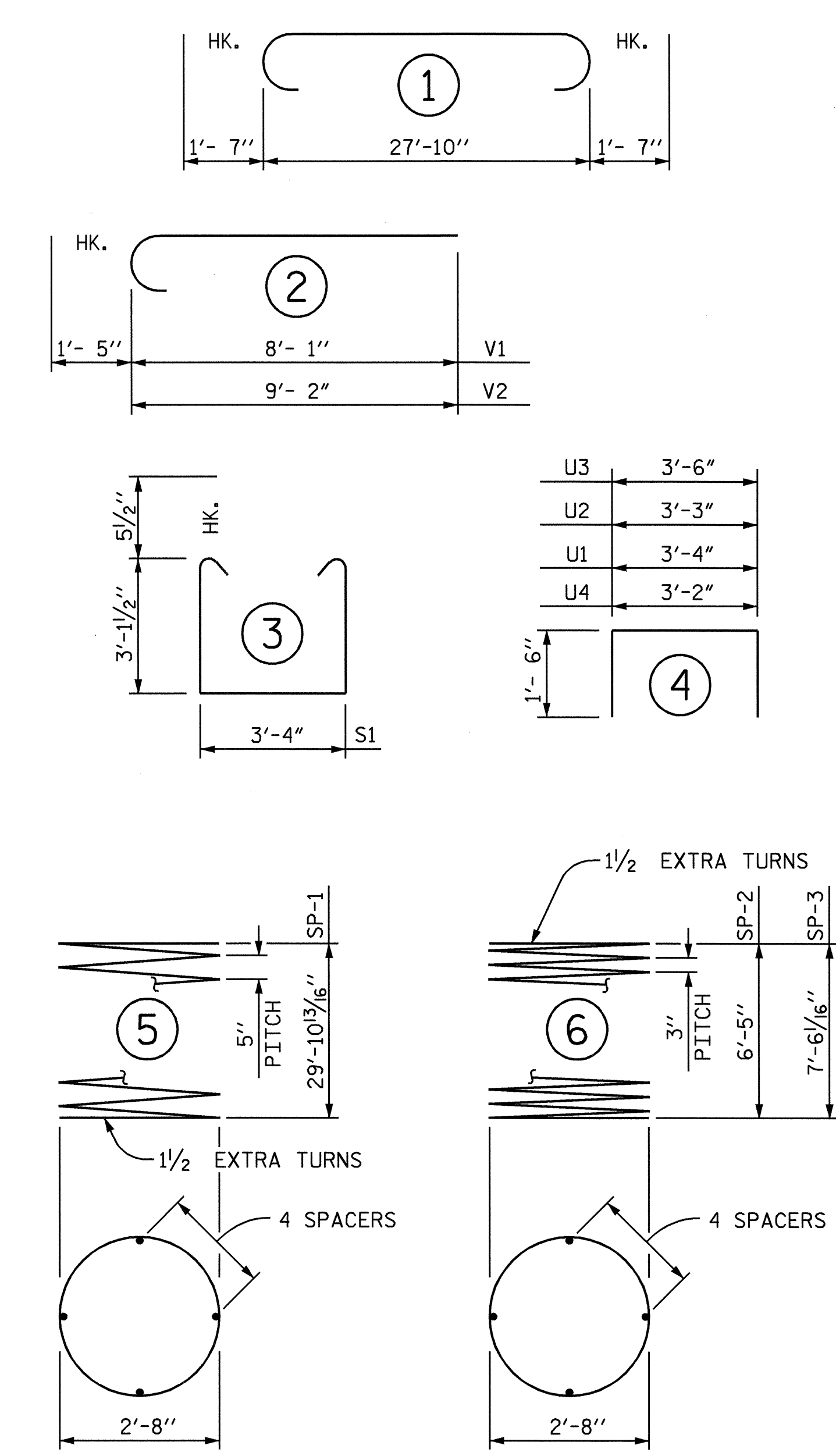


VIEW "X-X"



VIEW "Y-Y"

BAR TYPES



ALL BAR DIMENSIONS ARE OUT TO OUT.

BILL OF MATERIAL

BENT #2

BAR NO.	SIZE	TYPE	LENGTH	WEIGHT
B1	#11	1	31'-0"	988
B2	#11	STR	28'-0"	893
B3	#5	STR	28'-0"	117
B4	#4	STR	6'-1"	73
B5	#4	STR	2'-11"	12
M1	#10	STR	38'-11"	4019
S1	#5	3	10'-6"	515
U1	#4	4	6'-4"	118
U2	#4	4	6'-3"	17
U3	#4	4	6'-6"	17
U4	#4	4	6'-2"	33
V1	#10	2	9'-6"	491
V2	#10	2	10'-7"	546

REINFORCING STEEL = 7839 LBS

SP-1	2	***	5	615'-5"	1284
SP-2	1	**	6	228'-1"	152
SP-3	1	**	6	265'-9"	178

SPIRAL COLUMN REINFORCING STEEL = 1614 LBS

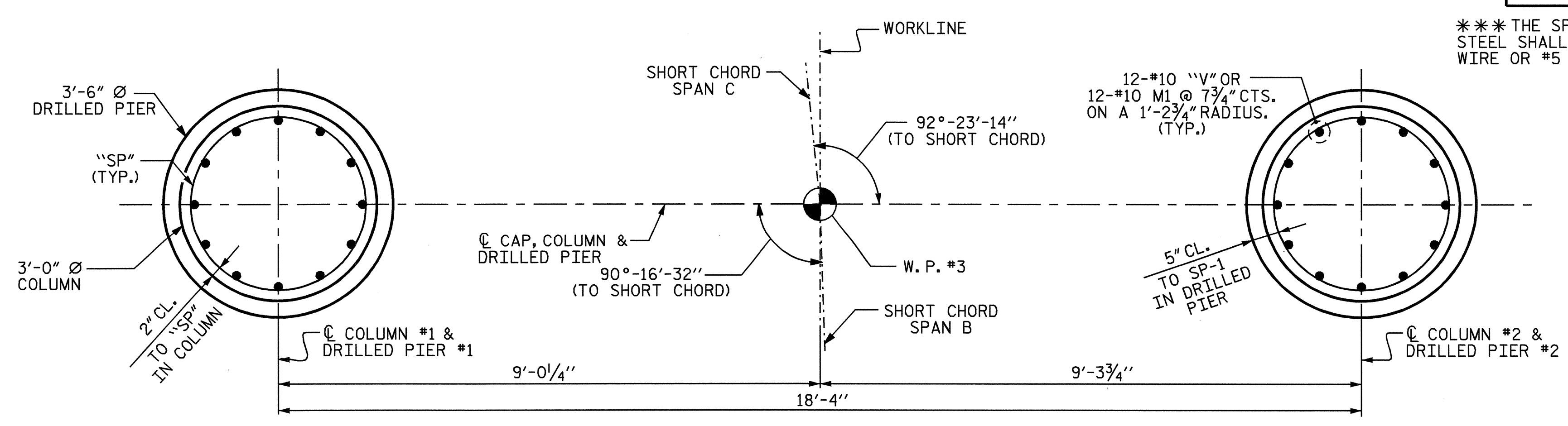
CLASS A CONCRETE BREAKDOWN

POUR #2 (COLUMNS)	3.5 C.Y.
POUR #3 (CAP)	14.5 C.Y.
CLASS A CONCRETE TOTAL	18.0 C.Y.

DRILLED PIER

POUR #1 (DRILLED PIERS CONCRETE)	21.6 C.Y.
3'-6" Ø DRILLED PIER NOT IN SOIL LIN. FT.	14.0
3'-6" Ø DRILLED PIER IN SOIL LIN. FT.	46.8
PERMANENT STEEL CASING FOR 3'-6" Ø DRILLED PIER LIN. FT.	25.8

CROSSHOLE SONIC LOGGING	1 EACH
CSL TUBES	LIN. FT. 263.2
SID INSPECTION	1 EACH



PLAN OF COLUMNS & DRILLED PIERS

REINFORCING STEEL AND DIMENSIONS ARE TYPICAL FOR BOTH COLUMNS AND DRILLED PIERS.

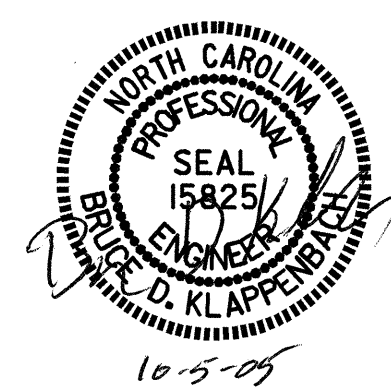
*** THE SP-1 SPIRAL REINFORCING STEEL SHALL BE W31 OR D-31 COLD DRAWN STEEL SHALL BE W20 OR D-20 COLD DRAWN WIRE OR #5 PLAIN OR DEFORMED BAR.
 ** THE SP-2 & SP-3 SPIRAL REINFORCING STEEL SHALL BE W20 OR D-20 COLD DRAWN WIRE OR #4 PLAIN OR DEFORMED BAR.

PROJECT NO. B-3877
 NASH COUNTY
 STATION: 25+80.65 -L-

SHEET 2 OF 2

STATE OF NORTH CAROLINA
 DEPARTMENT OF TRANSPORTATION
 RALEIGH

SUBSTRUCTURE BENT #2



REVISIONS						SHEET NO.
NO.	BY:	DATE:	NO.	BY:	DATE:	S-25
1			3			TOTAL SHEETS 33
2			4			

DRAWN BY: M. G. SHAIKH DATE: 02-11-05
 CHECKED BY: J. B. WILSON/K.M.M. DATE: 08-08-05