

PLAN

STIRRUPS IN CAP MAY BE SHIFTED AS NECESSARY TO CLEAR ANCHOR BOLTS.

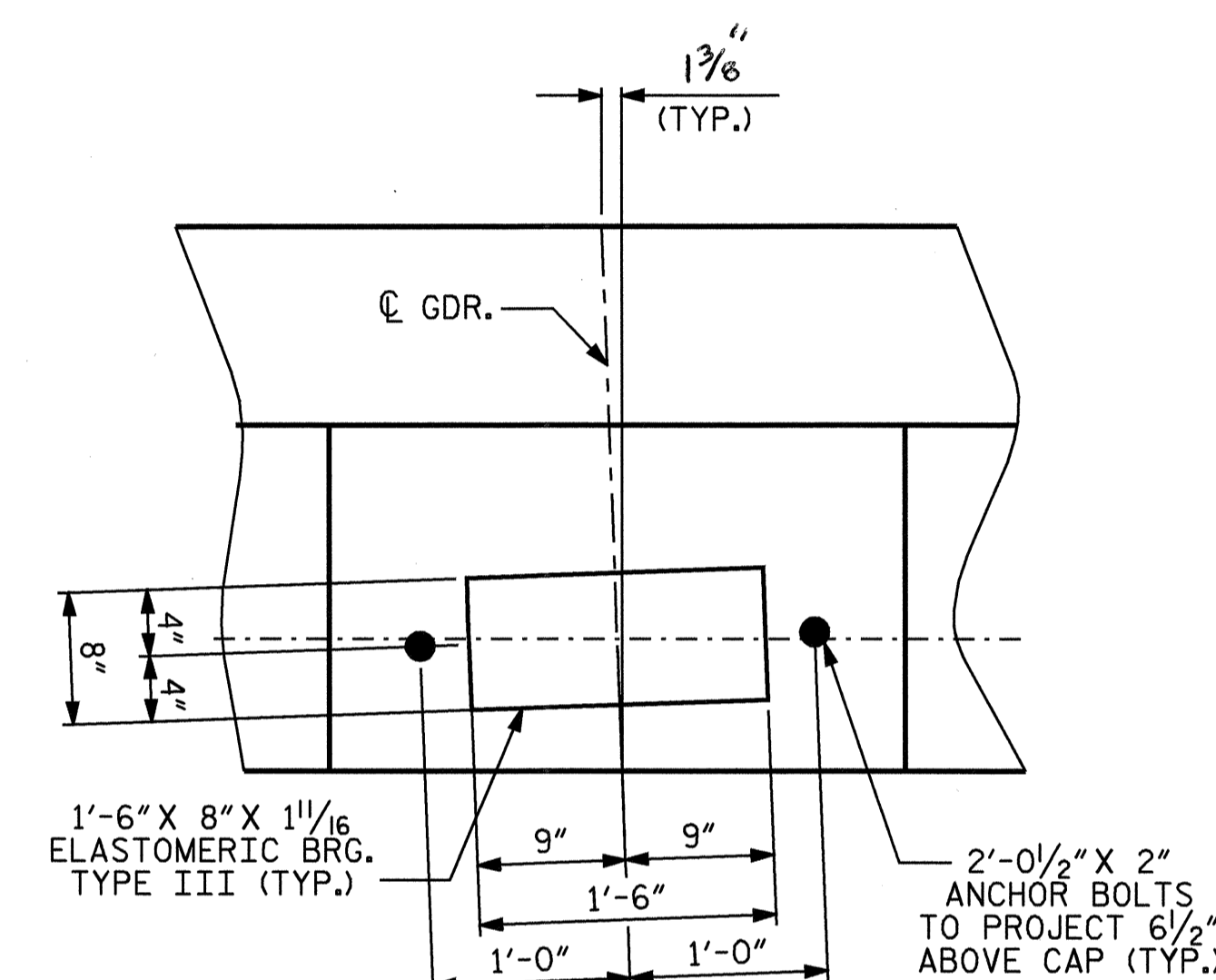
FOR EPOXY PROTECTIVE COATING, SEE SPECIAL PROVISIONS.

BACKWALL SHALL BE PLACED BEFORE APPLYING THE EPOXY PROTECTIVE COATING.

THE TOP SURFACE AREAS OF THE END BENT CAP SHALL BE CURED IN ACCORDANCE WITH THE STANDARD SPECIFICATIONS EXCEPT THAT THE MEMBRANE CURING COMPOUND METHOD SHALL NOT BE USED.

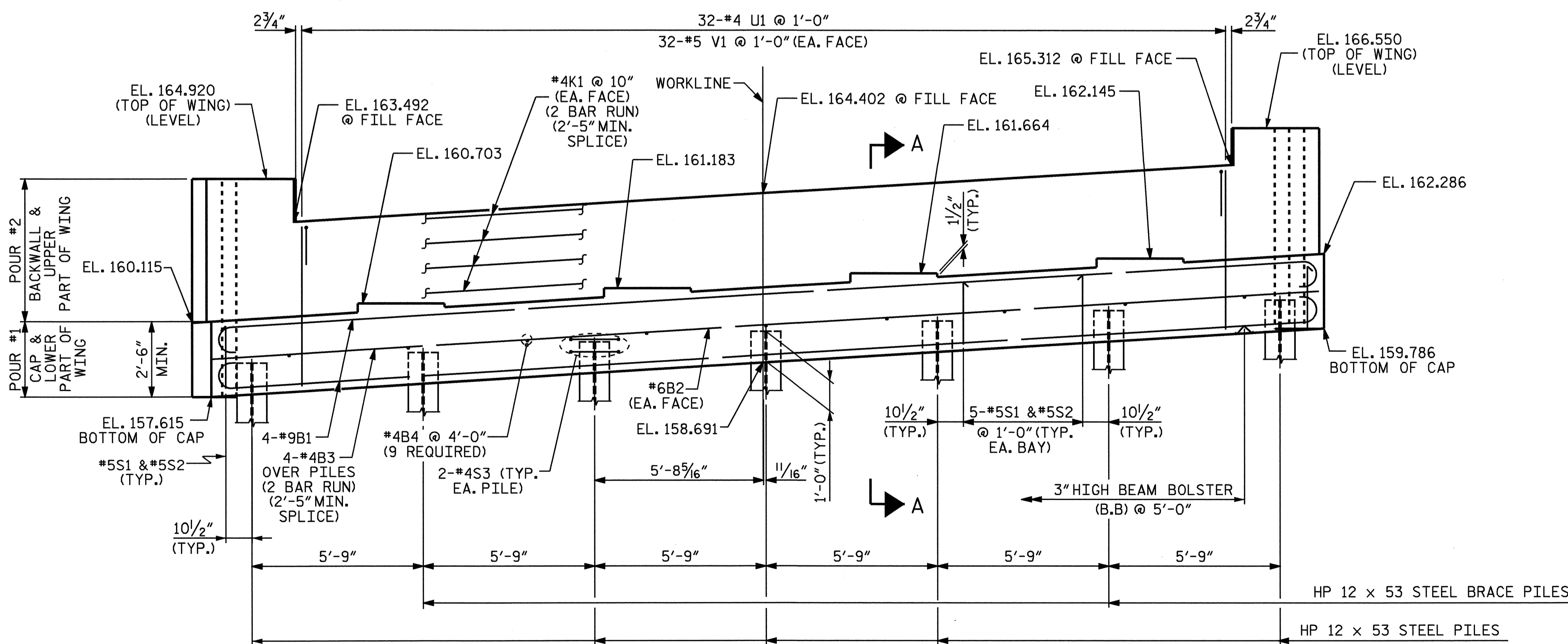
THE TOP SURFACE OF THE CAP EXCEPT THE BRIDGE SEAT BUILDUPS SHALL BE SLOPED TRANSVERSELY FROM THE FILL FACE TO THE BACK FACE AT THE RATE OF 2%.

THE CONTRACTOR SHALL PROVIDE FOR INSTALLATION OF THE 4" DIAMETER DRAIN PIPE THROUGH THE WING WALL AS REQUIRED FOR REINFORCED BRIDGE APPROACH FILLS. SEE THE ROADWAY PLANS. REINFORCING STEEL IN THE WING WALL MAY BE SHIFTED AS NECESSARY TO CLEAR THE DRAIN PIPE.



DETAIL "A"

(TYPICAL EA. BEARING)



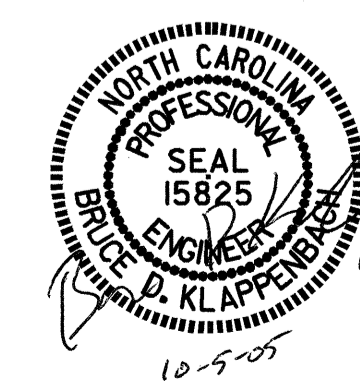
TOP OF PILE ELEVATIONS	ELEVATION
PILE #1	158.692
PILE #2	159.025
PILE #3	159.358
PILE #4	159.691
PILE #5	160.024
PILE #6	160.357
PILE #7	160.690

PROJECT NO. B-3877
NASH COUNTY
 STATION: 25+80.65 -L-

SHEET 1 OF 3

STATE OF NORTH CAROLINA
 DEPARTMENT OF TRANSPORTATION
 RALEIGH

SUBSTRUCTURE
 END BENT #2



REVISIONS						TOTAL SHEETS
NO.	BY:	DATE:	NO.	BY:	DATE:	33
1			3			
2			4			

DRAWN BY: M. G. SHAIKH DATE: 2-16-05
 CHECKED BY: J. B. WILSON DATE: 6-20-05