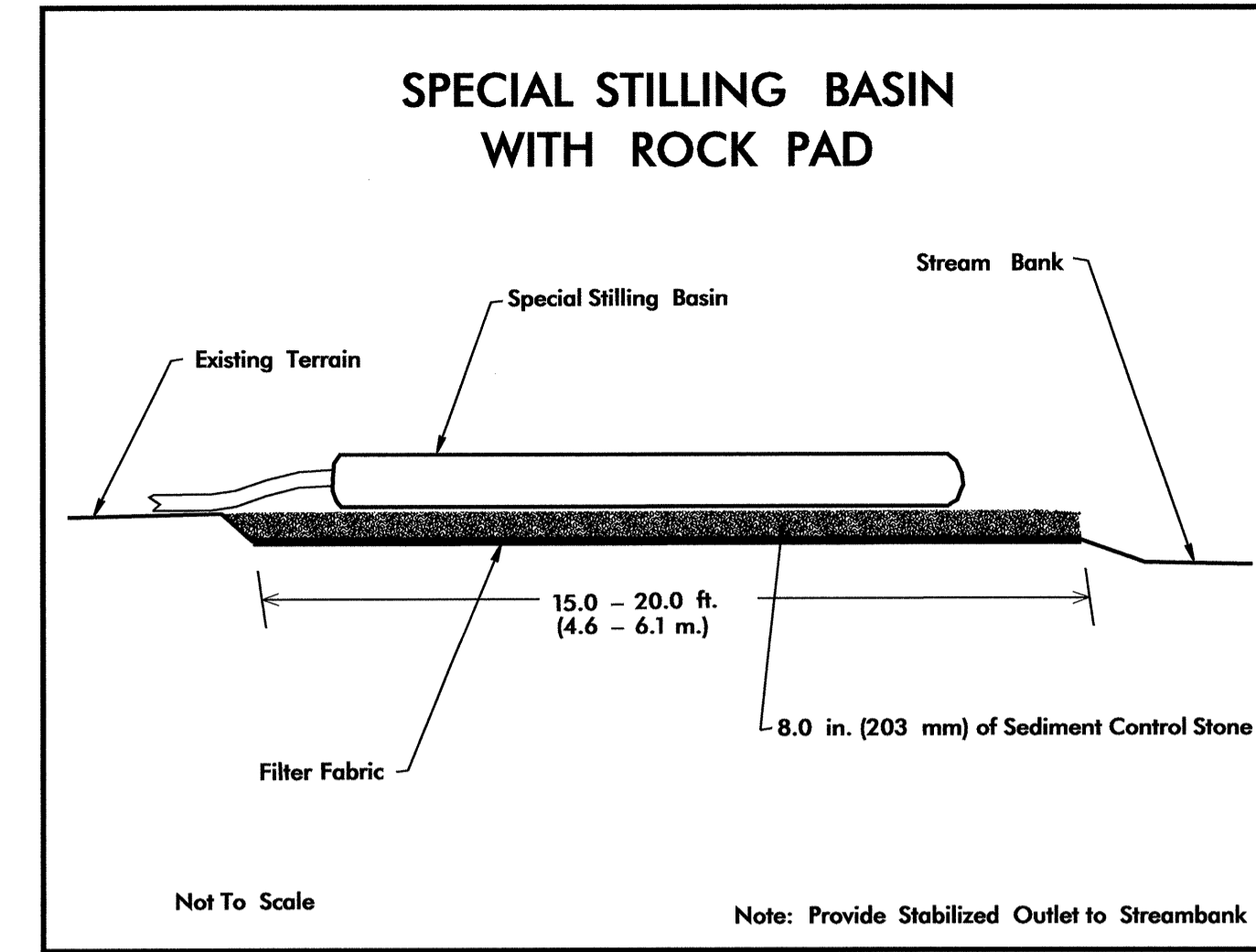
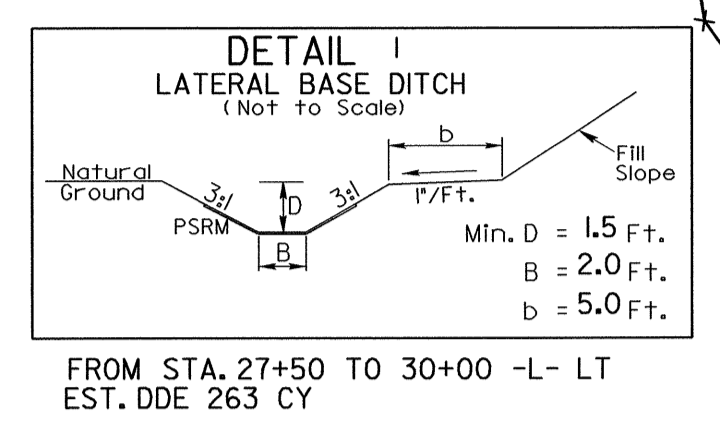
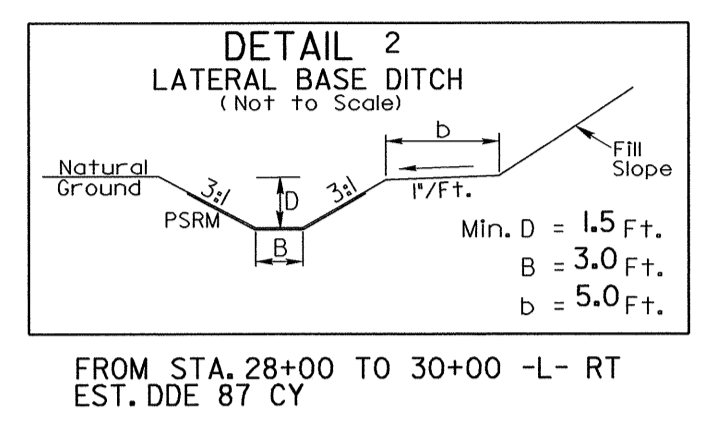


PROJECT REFERENCE NO.	SHEET NO.
B-3877	EC-4/CONST.4
R/W SHEET NO.	
ROADWAY DESIGN ENGINEER	HYDRAULICS ENGINEER



NOTE: UTILIZE SPECIAL STILLING BASIN AND/OR TEMPORARY ROCK SEDIMENT DAM TYPE - B AS STILLING BASIN WHERE APPLICABLE.

-L-	
PI Sta 24+39.90 Δ = 47° 47' 42.9" (LT) D = 3° 40' 22.1" L = 1,301.33' T = 691.22' R = 1,560.00'	PI Sta 32+47.58 Δ = 10° 46' 51.4" (LT) D = 5° 43' 46.5" L = 188.16' T = 94.36' R = 1,000.00'

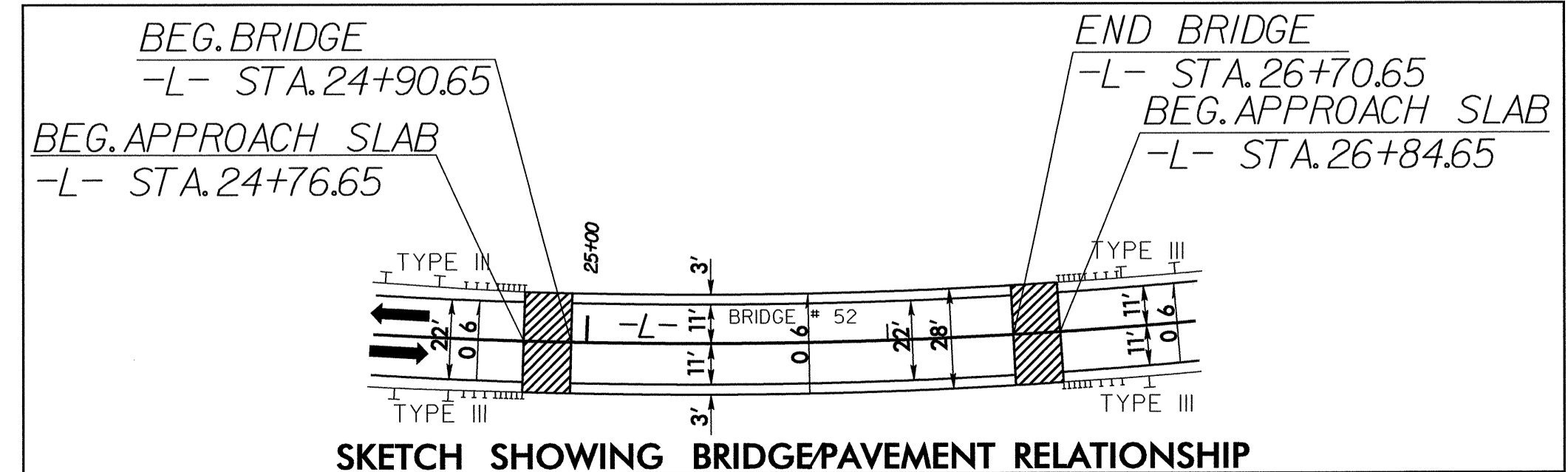
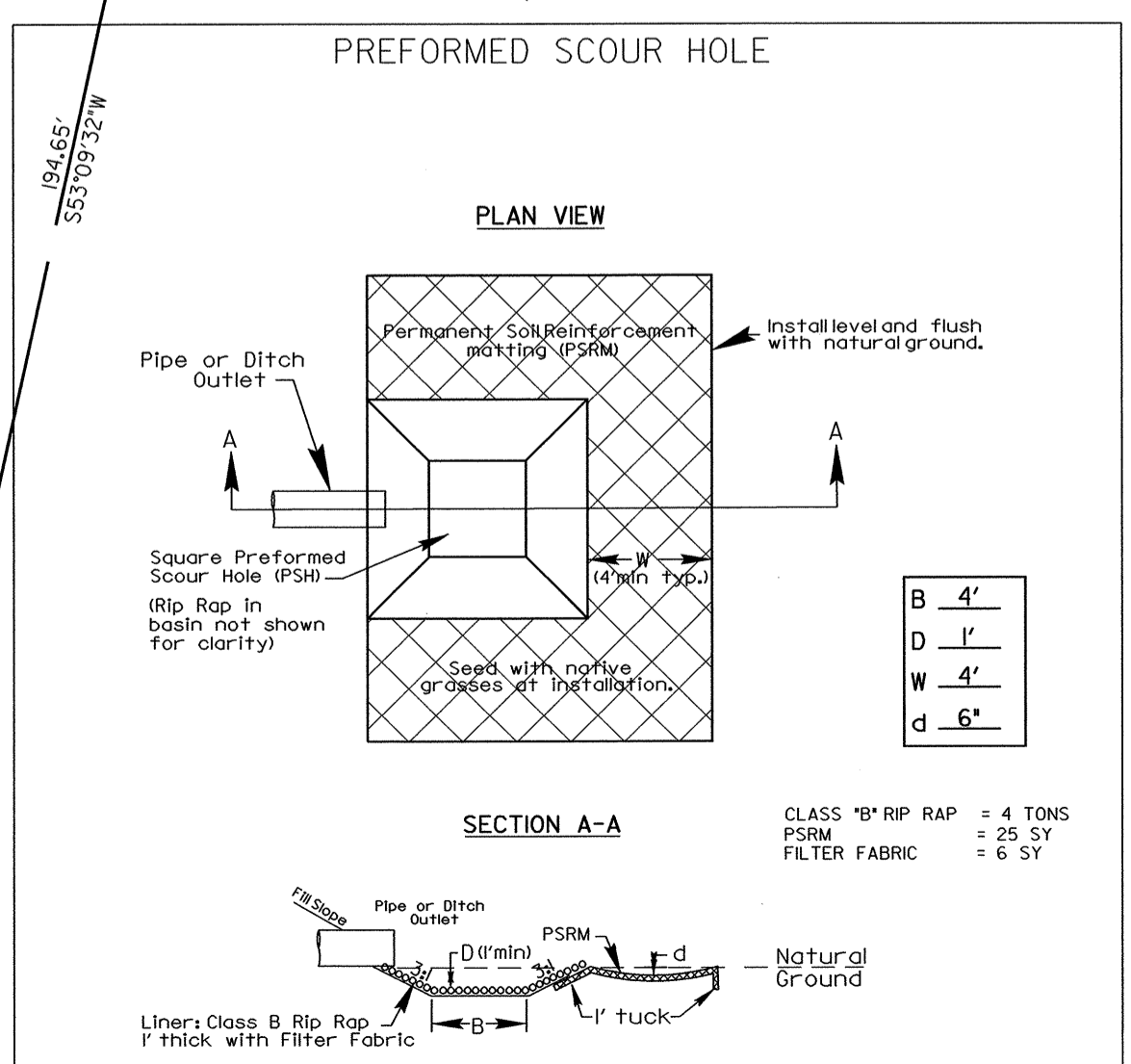
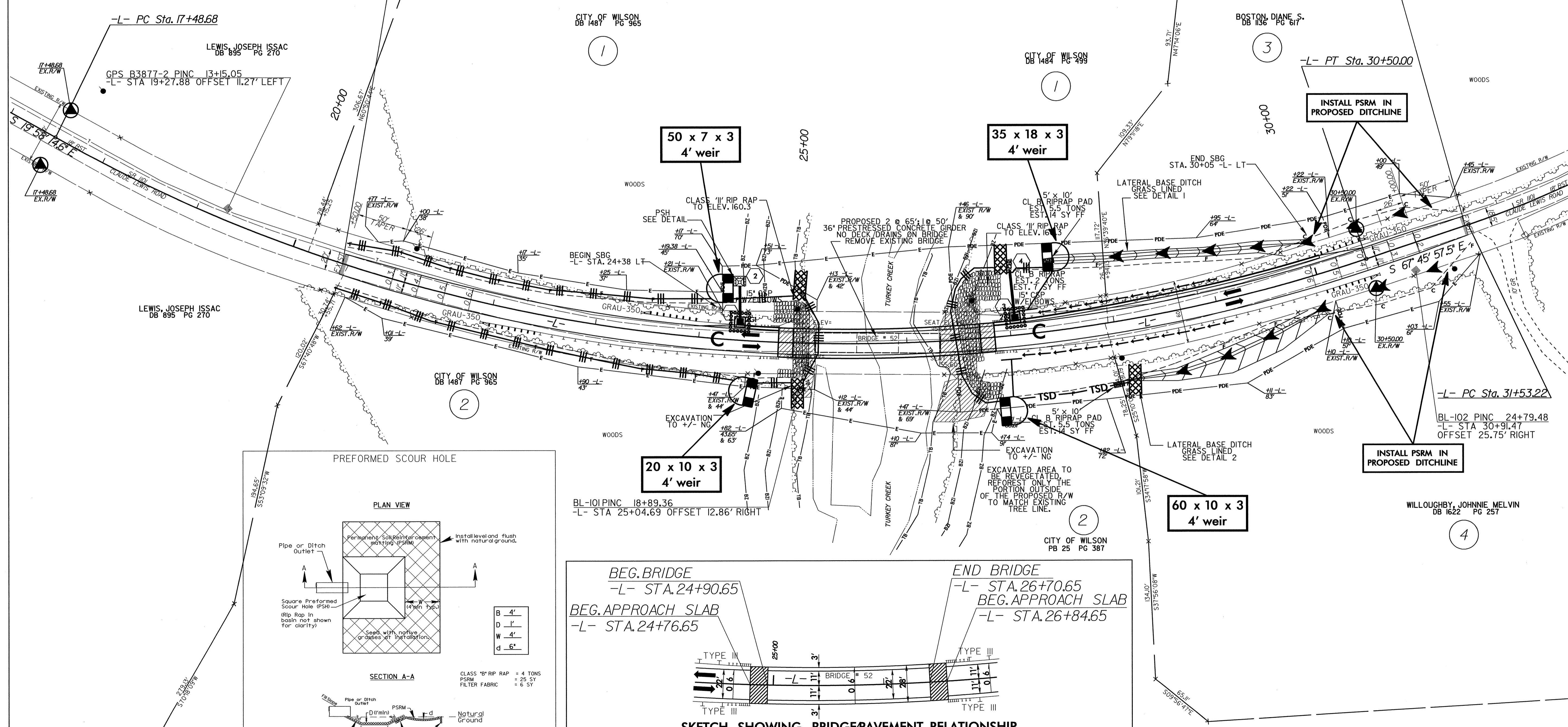


FROM STA. 28+00 TO 30+00 -L- RT
EST. DDE 87 CY

FROM STA. 27+50 TO 30+00 -L- LT
EST. DDE 263 CY

-L- STA. 20+50.00 BEGIN STATE PROJECT B-3877

-L- STA. 31+50.00 END STATE PROJECT B-3877



NOTE: SEE SHEET 5 FOR -L- PROFILE