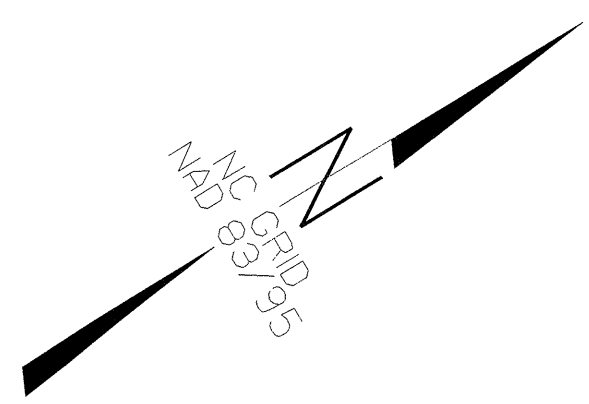
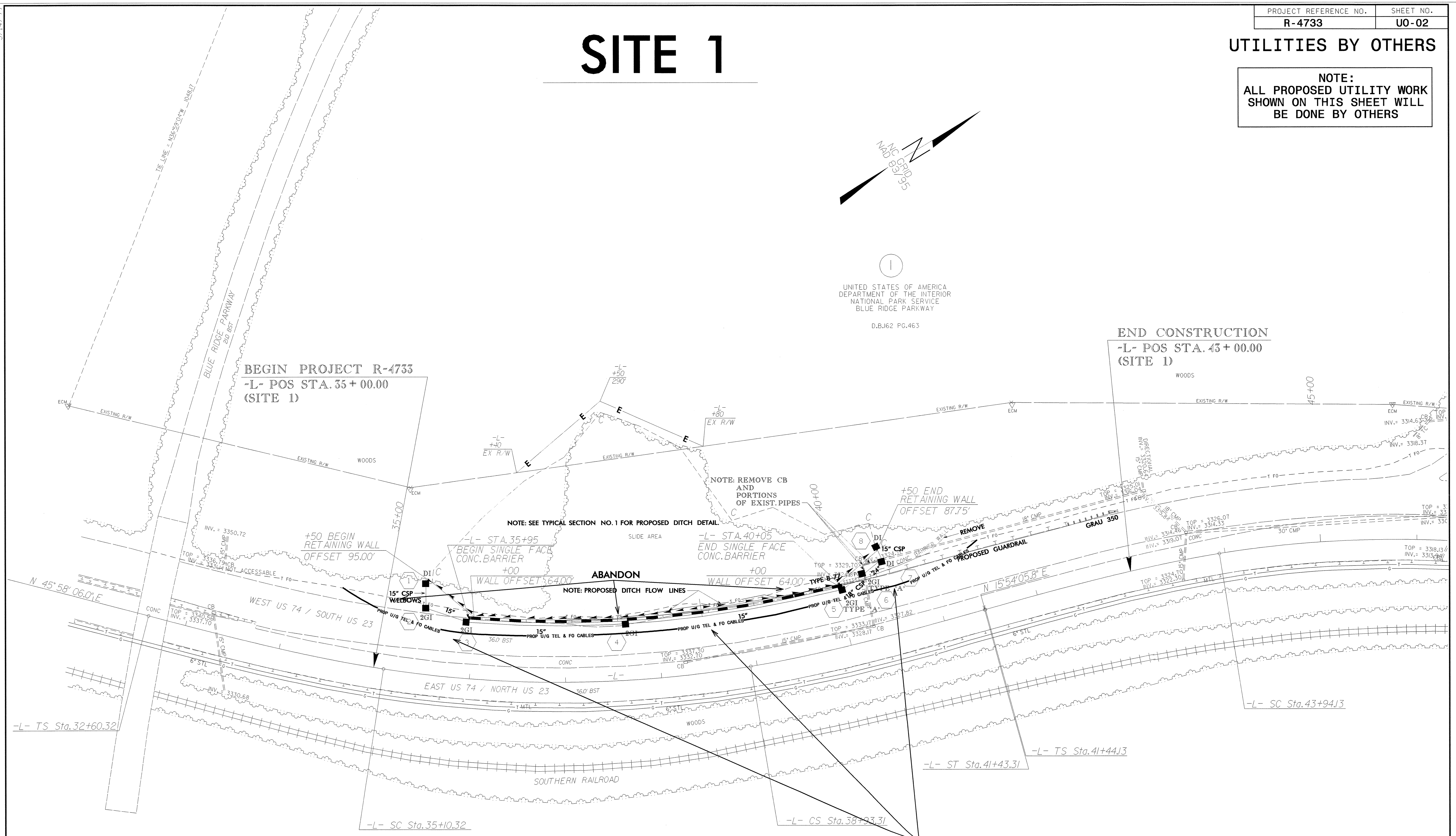


5/14/95
 1
 2
 3
 4
 5
 6
 7
 8
 9
 10
 11
 12
 13
 14
 15
 16
 17
 18
 19
 20
 21
 22
 23
 24
 25
 26
 27
 28
 29
 30
 31
 32
 33
 34
 35
 36
 37
 38
 39
 40
 41
 42
 43
 44
 45
 46
 47
 48
 49
 50
 51
 52
 53
 54
 55
 56
 57
 58
 59
 60
 61
 62
 63
 64
 65
 66
 67
 68
 69
 70
 71
 72
 73
 74
 75
 76
 77
 78
 79
 80
 81
 82
 83
 84
 85
 86
 87
 88
 89
 90
 91
 92
 93
 94
 95
 96
 97
 98
 99
 100

SITE 1

UTILITIES BY OTHERS

NOTE:
 ALL PROPOSED UTILITY WORK
 SHOWN ON THIS SHEET WILL
 BE DONE BY OTHERS



UNITED STATES OF AMERICA
 DEPARTMENT OF THE INTERIOR
 NATIONAL PARK SERVICE
 BLUE RIDGE PARKWAY
 D.B.162 PG.463

NOTE: SEE TYPICAL SECTION NO. 1 FOR PROPOSED DITCH DETAIL.

NOTE: REMOVE CB AND PORTIONS OF EXIST. PIPES

ABANDON

NOTE: PROPOSED DITCH FLOW LINES

DIRECTIONAL BORE 6' DEEP MIN. AND APPROX 14' INSIDE EDGE OF PAVEMENT

-L- CURVE DATA

Pls Sta 34+27.08	Pls Sta 37+03.44	Pls Sta 39+76.73
Δs = 5' 56' 14.9"	Δ = 18' 11' 30.3" (LT)	Δs = 5' 56' 14.9"
Ls = 250.00'	D = 4' 45' 00.0"	Ls = 250.00'
LT = 166.76'	L = 382.99'	LT = 166.76'
ST = 83.42'	T = 193.12'	ST = 83.42'
	R = 1,206.23'	
Pls Sta 43+10.91	Pls Sta 45+66.33	
Δs = 6' 14' 59.9"	Δ = 17' 05' 30.4" (RT)	
Ls = 250.00'	D = 4' 59' 59.9"	
LT = 166.77'	L = 341.84'	
ST = 83.43'	T = 172.20'	
	R = 1,145.92'	

FOR WALL PROFILE SEE SHEET 6