

5/14/93
 00
 01
 02
 03
 04
 05
 06
 07
 08
 09
 10
 11
 12
 13
 14
 15
 16
 17
 18
 19
 20
 21
 22
 23
 24
 25
 26
 27
 28
 29
 30
 31
 32
 33
 34
 35
 36
 37
 38
 39
 40
 41
 42
 43
 44
 45
 46
 47
 48
 49
 50
 51
 52
 53
 54
 55
 56
 57
 58
 59
 60
 61
 62
 63
 64
 65
 66
 67
 68
 69
 70
 71
 72
 73
 74
 75
 76
 77
 78
 79
 80
 81
 82
 83
 84
 85
 86
 87
 88
 89
 90
 91
 92
 93
 94
 95
 96
 97
 98
 99
 00

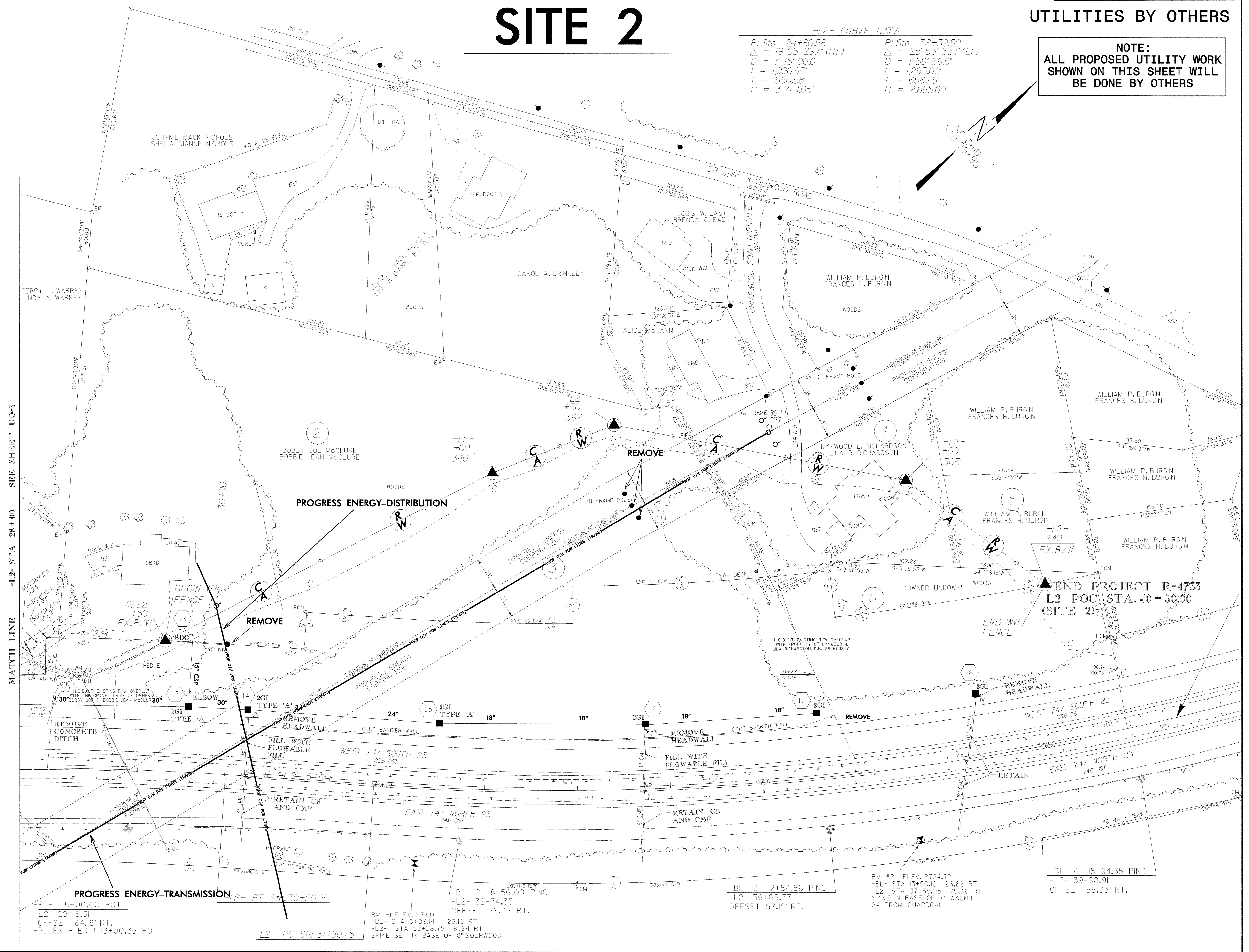
SITE 2

UTILITIES BY OTHERS

-L2- CURVE DATA

PI Sta 24+80.53	PI Sta 38+39.50
$\Delta = 19^{\circ}05'29.7''$ (RT)	$\Delta = 25^{\circ}53'53.1''$ (LT)
D = 1'45'00.0"	D = 1'59'59.5"
L = 1,090.95'	L = 1,295.00'
T = 550.58'	T = 658.75'
R = 3,274.05'	R = 2,865.00'

NOTE:
 ALL PROPOSED UTILITY WORK
 SHOWN ON THIS SHEET WILL
 BE DONE BY OTHERS



MATCH LINE -L2- STA 28+00 SEE SHEET U0-3

END PROJECT R-4733
-L2- POC STA. 40+50.00
(SITE 2)

-BL- 1 5+00.00 POT
 -L2- 29+18.31
 OFFSET 64.19' RT.
 -BL-EXT- EXTI 13+00.35 POT

-L2- PC Sta. 31+80.75

BM #1 ELEV. 2711.01
 -BL- STA 8+09.14 25.10 RT.
 -L2- STA 32+28.75 81.64 RT.
 SPIKE SET IN BASE OF 8" SOURWOOD

-BL- 3 12+54.86 PINC
 -L2- 36+65.77
 OFFSET 57.15' RT.

BM #2 ELEV. 2724.72
 -BL- STA 13+50.12 26.82 RT.
 -L2- STA 37+59.95 79.46 RT.
 SPIKE IN BASE OF 10" WALNUT
 24" FROM GUARDRAIL

-BL- 4 15+94.35 PINC
 -L2- 39+98.91
 OFFSET 55.33' RT.