

GPS HARN NETWORK
NOT TO SCALE

R-4733 SITE 2 SURVEY CONTROL SHEET

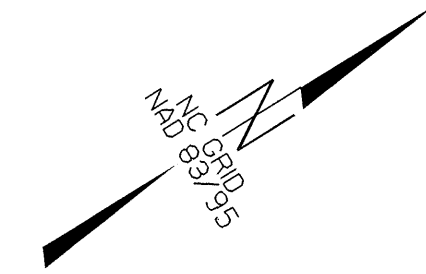
CONTROL DATA

BL	POINT	DESC.	NORTH	EAST	ELEVATION	L2 STATION	OFFSET
1	BL-1		655817.0560	807258.7910	2710.47	29+18.31	64.19 RT
2	BL-2		656078.7660	807500.1350	2716.45	32+74.35	56.25 RT
3	BL-3		656389.5670	807750.1080	2719.89	36+65.77	57.15 RT
4	BL-4		656680.1780	807925.6070	2724.16	39+98.91	55.33 RT
5	BL-5		656929.6780	808044.3300	2732.10	42+70.07	55.60 RT

.....
 BM1 ELEVATION - 2711.01
 N 656027 E 807487
 L2 STATION 32+29 82 RIGHT
 8" SPIKE IN BASE OF 8" SOURWOOD

.....
 BM2 ELEVATION - 2724.72
 N 656457 E 807822
 L2 STATION 37+60 79 RIGHT
 8" SPIKE IN BASE OF 10" WALNUT

.....
 BM3 ELEVATION - 2729.02
 N 656894 E 808039
 L2 STATION 42+36 65 RIGHT
 6" INCH SPIKE IN BASE OF 15" DOUBLE PINE



NOTES:

THE CONTROL DATA FOR THIS PROJECT CAN BE FOUND ELECTRONICALLY BY SELECTING PROJECT CONTROL DATA AT:

HTTP://WWW.DOH.DOT.STATE.NC.US/PRECONSTRUCT/HIGHWAY/LOCATION/PROJECT/

FILE:R4733_SITE2_LLS_CONTROL_040421.TXT

SITE CALIBRATION INFORMATION HAS NOT BEEN PROVIDED FOR THIS PROJECT.

NCDOT GPS STATION R4411-105
 LOCALIZED PROJECT COORDINATES
 N = 655276.960
 E = 806700.529

NCDOT GPS STATION R4411-106
 LOCALIZED PROJECT COORDINATES
 N = 656307.156
 E = 807625.597

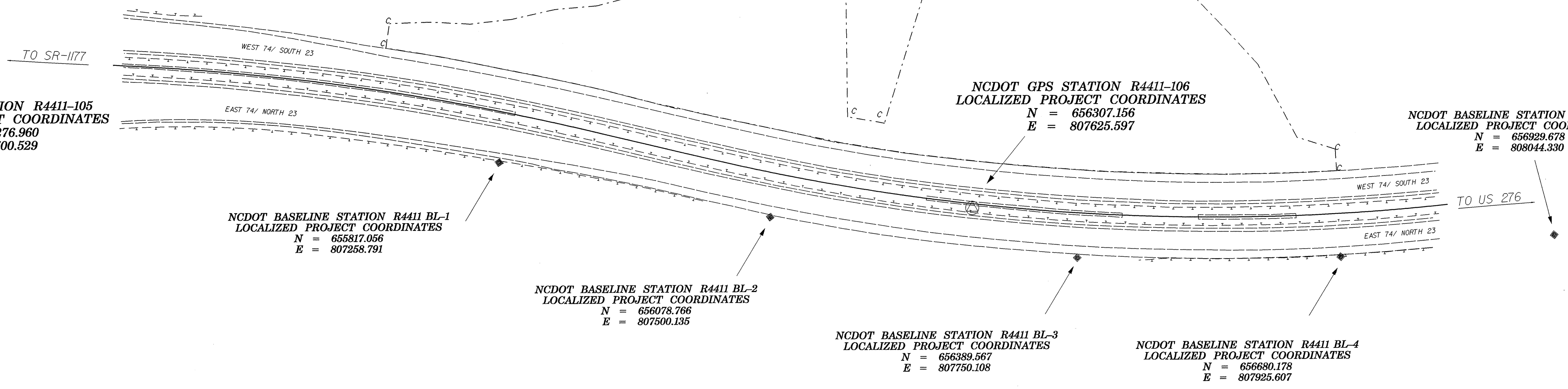
NCDOT BASELINE STATION R4411 BL-5
 LOCALIZED PROJECT COORDINATES
 N = 656929.678
 E = 808044.330

NCDOT BASELINE STATION R4411 BL-1
 LOCALIZED PROJECT COORDINATES
 N = 655817.056
 E = 807258.791

NCDOT BASELINE STATION R4411 BL-2
 LOCALIZED PROJECT COORDINATES
 N = 656078.766
 E = 807500.135

NCDOT BASELINE STATION R4411 BL-3
 LOCALIZED PROJECT COORDINATES
 N = 656389.567
 E = 807750.108

NCDOT BASELINE STATION R4411 BL-4
 LOCALIZED PROJECT COORDINATES
 N = 656680.178
 E = 807925.607



DATUM DESCRIPTION

THE LOCALIZED COORDINATE SYSTEM DEVELOPED FOR THIS PROJECT IS BASED ON THE STATE PLANE COORDINATES ESTABLISHED BY NCDOT FOR MONUMENT "GPS 106" WITH NAD 1983/95 STATE PLANE GRID COORDINATES OF NORTHING: 656307.156(ft) EASTING: 807625.597(ft) THE AVERAGE COMBINED GRID FACTOR USED ON THIS PROJECT (GROUND TO GRID) IS: 0.999775780 THE N.C. LAMBERT GRID BEARING AND LOCALIZED HORIZONTAL GROUND DISTANCE FROM "GPS 106" TO -L2- STATION 27+50.00 IS S 42° 28' 37.88" W 777.210' ALL LINEAR DIMENSIONS ARE LOCALIZED HORIZONTAL DISTANCES VERTICAL DATUM USED IS NAVD 88

⊙ INDICATES GEODETIC CONTROL MONUMENTS USED OR SET FOR HORIZONTAL PROJECT CONTROL BY THE NCDOT LOCATION AND SURVEYS UNIT.

PROJECT CONTROL ESTABLISHED UTILIZING GLOBAL POSITIONING SYSTEM.

NETWORK ESTABLISHED FROM EXISTING HARN MONUMENTATION.

NOTE: DRAWING NOT TO SCALE

18-MAY-2005 08:11 R:\MAY-2005\08:11\4733.RDY-site2_ls.cl_040421.dgn