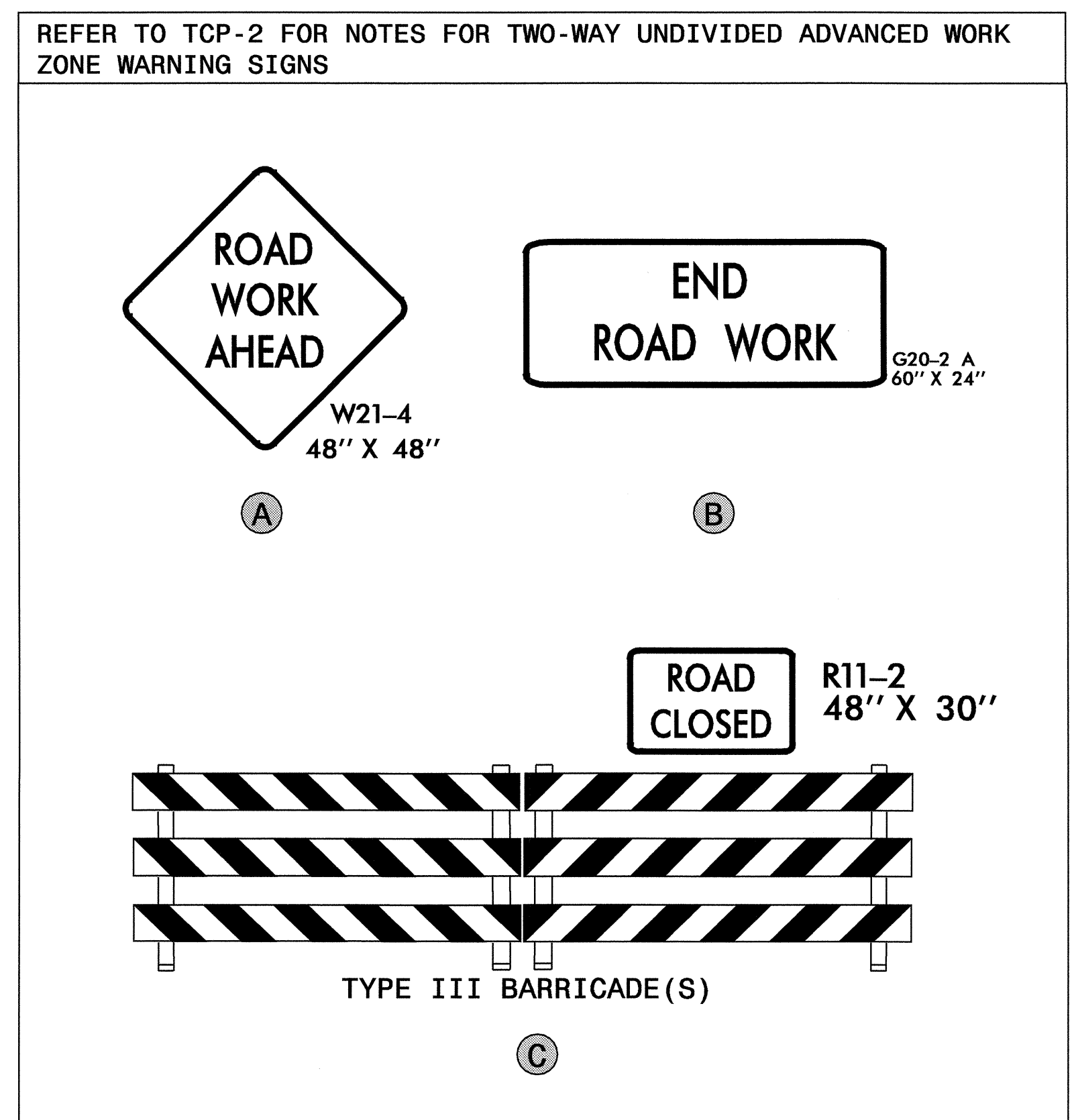
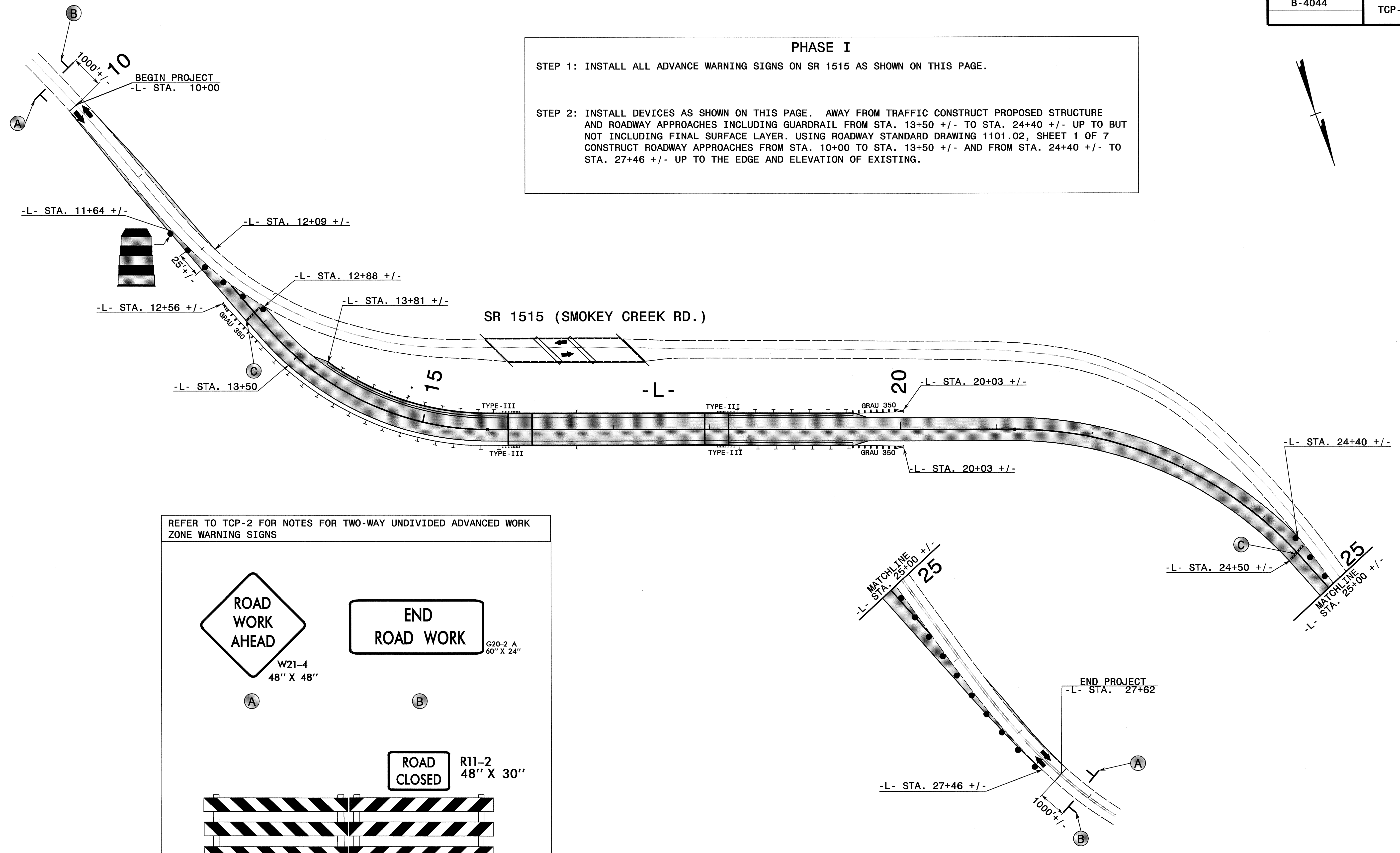


**PHASE I**

STEP 1: INSTALL ALL ADVANCE WARNING SIGNS ON SR 1515 AS SHOWN ON THIS PAGE.

STEP 2: INSTALL DEVICES AS SHOWN ON THIS PAGE. AWAY FROM TRAFFIC CONSTRUCT PROPOSED STRUCTURE AND ROADWAY APPROACHES INCLUDING GUARDRAIL FROM STA. 13+50 +/- TO STA. 24+40 +/- UP TO BUT NOT INCLUDING FINAL SURFACE LAYER. USING ROADWAY STANDARD DRAWING 1101.02, SHEET 1 OF 7 CONSTRUCT ROADWAY APPROACHES FROM STA. 10+00 TO STA. 13+50 +/- AND FROM STA. 24+40 +/- TO STA. 27+46 +/- UP TO THE EDGE AND ELEVATION OF EXISTING.



APPROVED: *Jessica D. Huse* DATE: *8/2/05*

SEAL:

**PHASE I**

SCALE: NONE		REVISIONS
DATE: 8/2005		
DWG. BY: DAH		
DESIGN BY: DAH		
REVIEWED BY: JDK		

05-AUG-2005 16:20  
 \\ets-cv-fs03\B4044\Traffic\TrafficControl\top\b4044\_top03.phl.dgn  
 ahayes AT WZTC22424