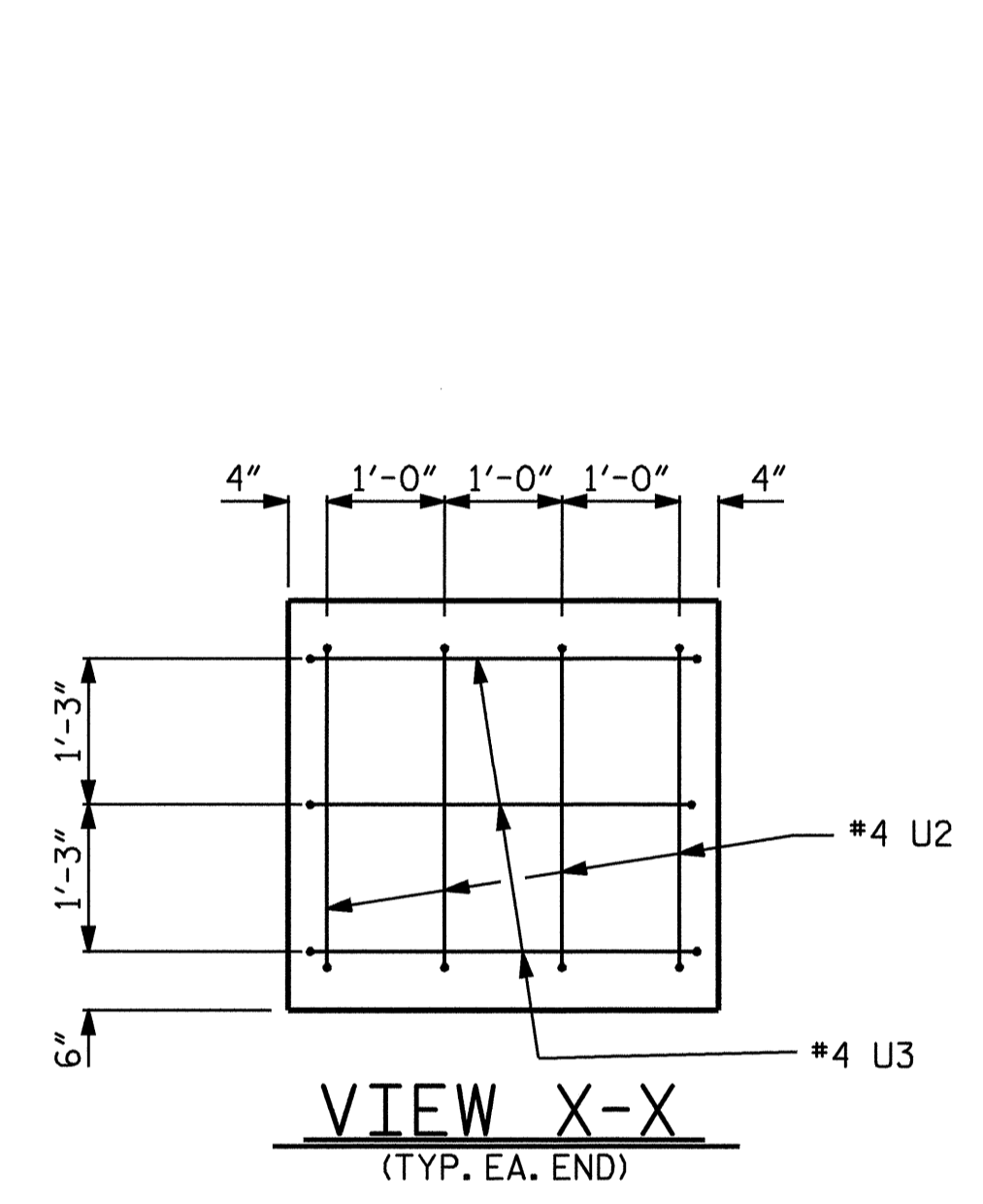
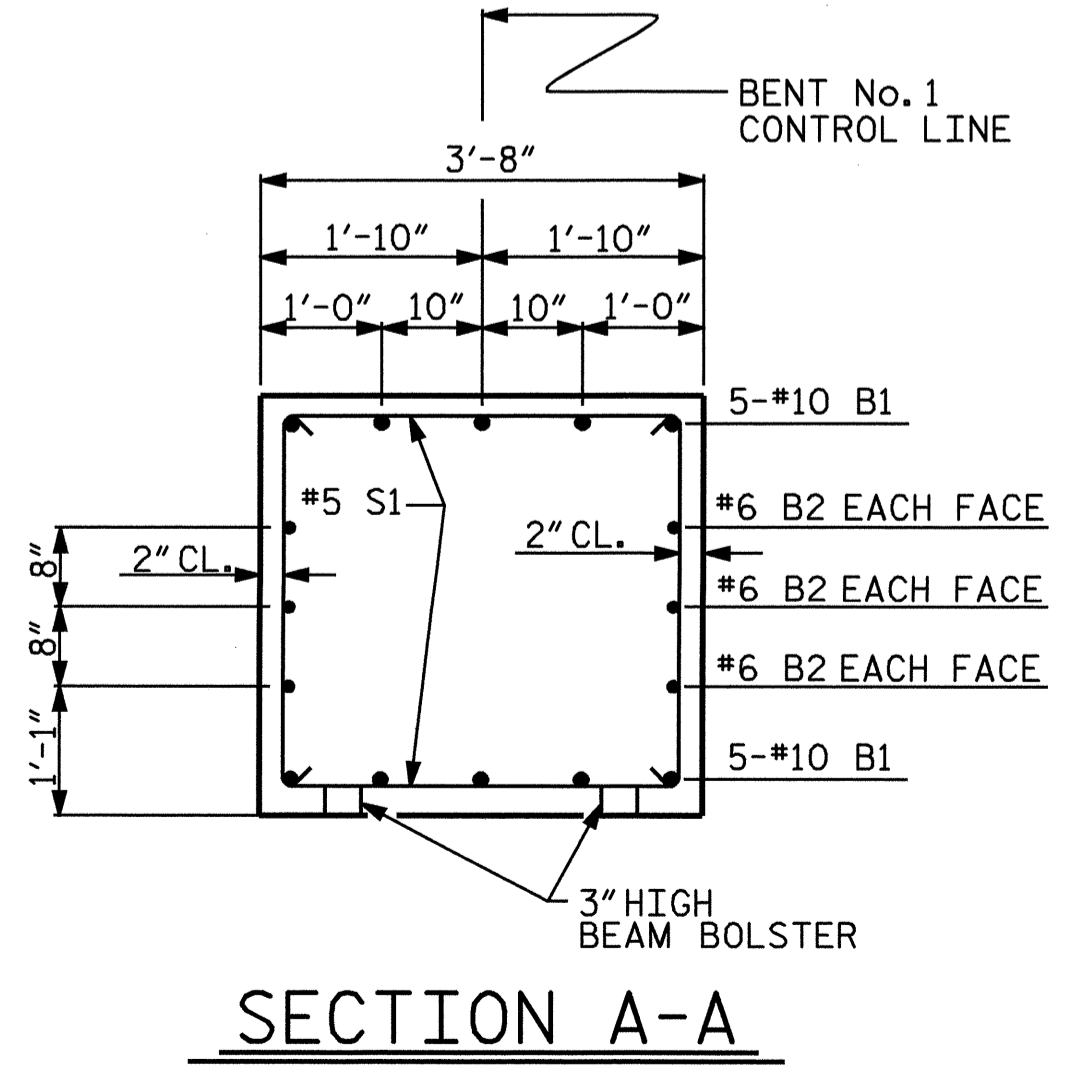


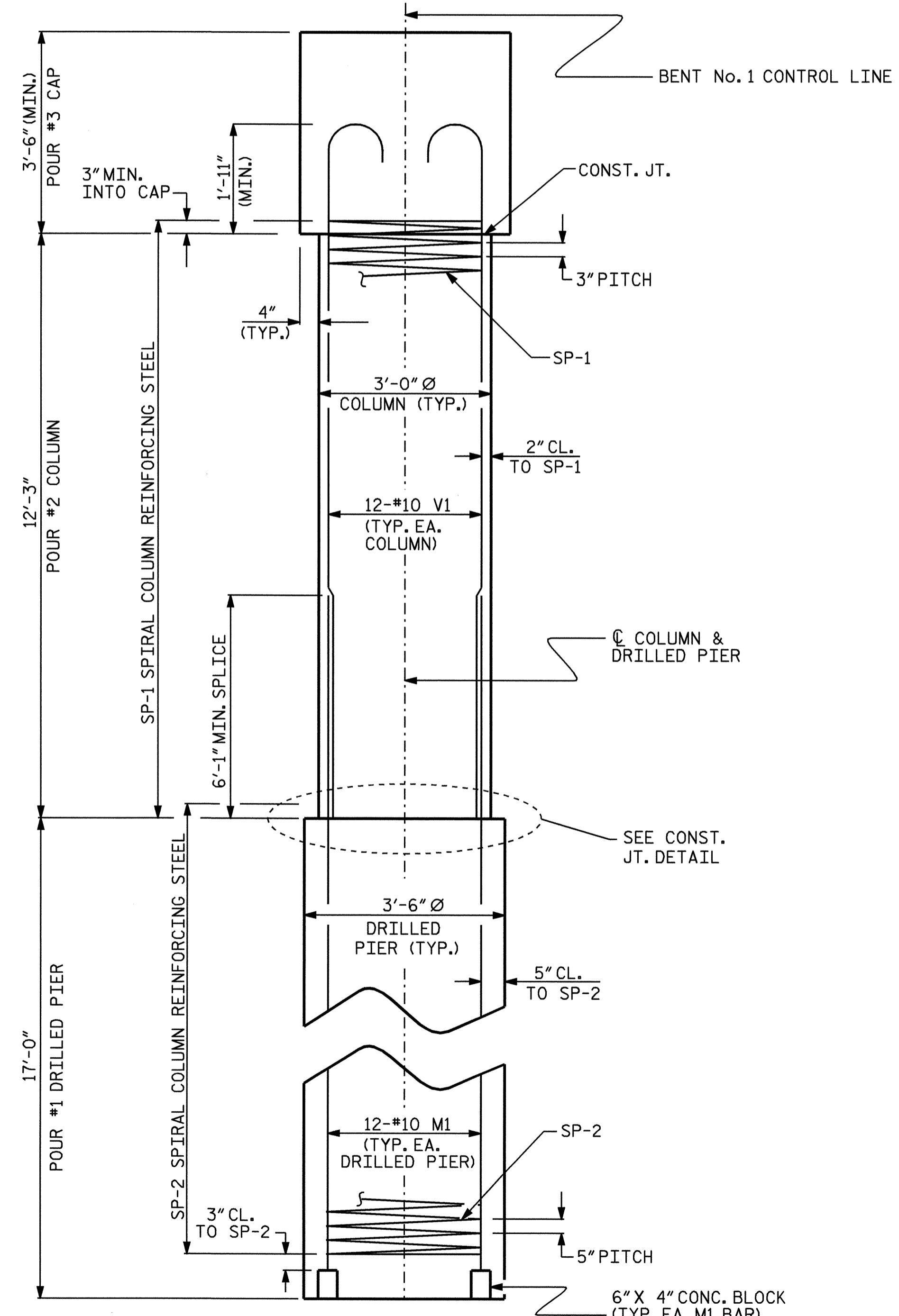
PLAN OF DRILLED PIERS & COLUMNS



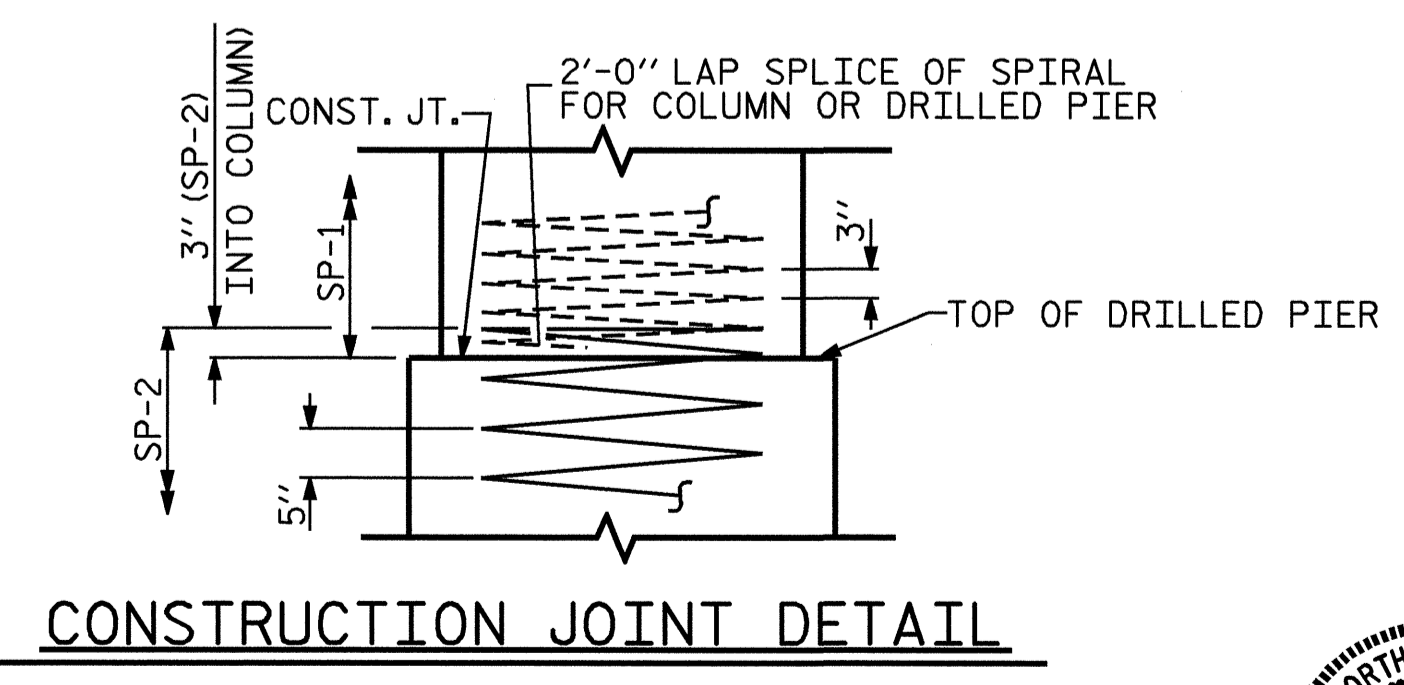
VIEW X-X
(TYP. EA. END)



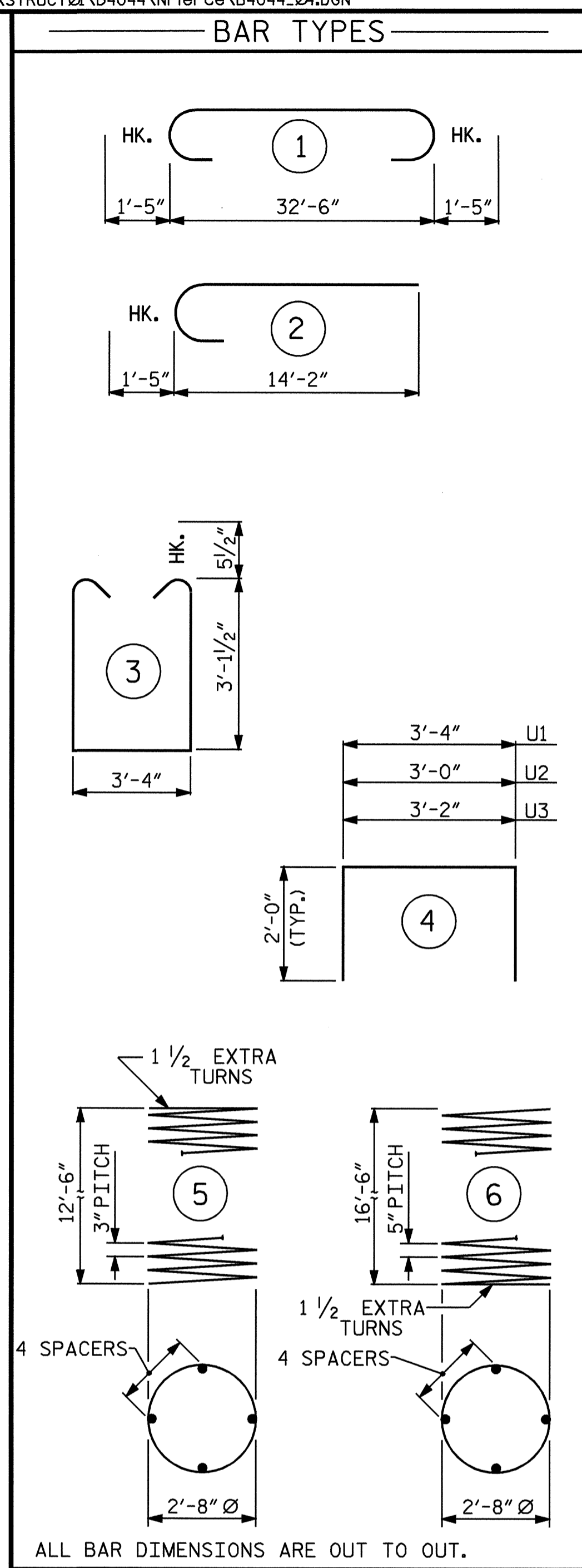
SECTION A-A



END ELEVATION



CONSTRUCTION JOINT DETAIL



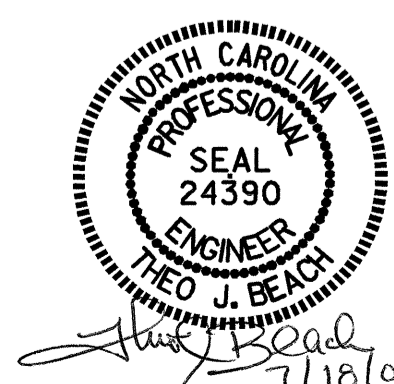
BILL OF MATERIAL					
BENT No. 1					
BAR	NO.	SIZE	TYPE	LENGTH	WEIGHT
B1	10	#10	1	35'-4"	1520
B2	6	#6	STR	32'-8"	294
B3	5	#4	STR	13'-2"	44
M1	24	#10	STR	25'-7"	2642
S1	55	#5	3	10'-6"	602
U1	32	#4	4	7'-4"	157
U2	8	#4	4	7'-0"	37
U3	6	#4	4	7'-2"	29
V1	24	#10	2	15'-7"	1609
REINFORCING STEEL					6934 LBS.
SP-1	2	**	5	429'-1"	573
SP-2	2	*	6	345'-6"	721
SPIRAL COLUMN REINFORCING STEEL					1294 LBS.
* THE SP-2 SPIRAL REINFORCING STEEL SHALL BE W31 OR D-31 COLD DRAWN WIRE OR #5 PLAIN OR DEFORMED BAR,					
** THE SP-1 SPIRAL REINFORCING STEEL SHALL BE W20 OR D-20 COLD DRAWN WIRE OR #4 PLAIN OR DEFORMED BAR.					
CLASS A CONCRETE BREAKDOWN					
POUR #2 (COLUMNS)					= 6.4 C.Y.
POUR #3 (CAP)					= 16.7 C.Y.
TOTAL CLASS A CONCRETE					= 23.1 C.Y.
DRILLED PIERS:					
DRILLED PIER CONCRETE POUR #1 (DRILLED PIERS) IN SOIL					= 12.1 C.Y.
3'-6" Ø DRILLED PIER IN SOIL					= 24.0 LIN. FT.
3'-6" Ø DRILLED PIER NOT IN SOIL					= 10.0 LIN. FT.
CSL TUBES					= 156.0 LIN. FT.

DRAWN BY : N. PIERCE DATE : 5/05
 CHECKED BY : M. BRITT DATE : 5/05

PROJECT NO. B-4044
 BURKE COUNTY
 STATION: 17+05.00 -L-

SHEET 2 OF 2

STATE OF NORTH CAROLINA
 DEPARTMENT OF TRANSPORTATION
 RALEIGH
 SUBSTRUCTURE
 BENT No. 1



REVISIONS						SHEET NO.
NO.	BY:	DATE:	NO.	BY:	DATE:	S-23
1			3			TOTAL SHEETS
2			4			35