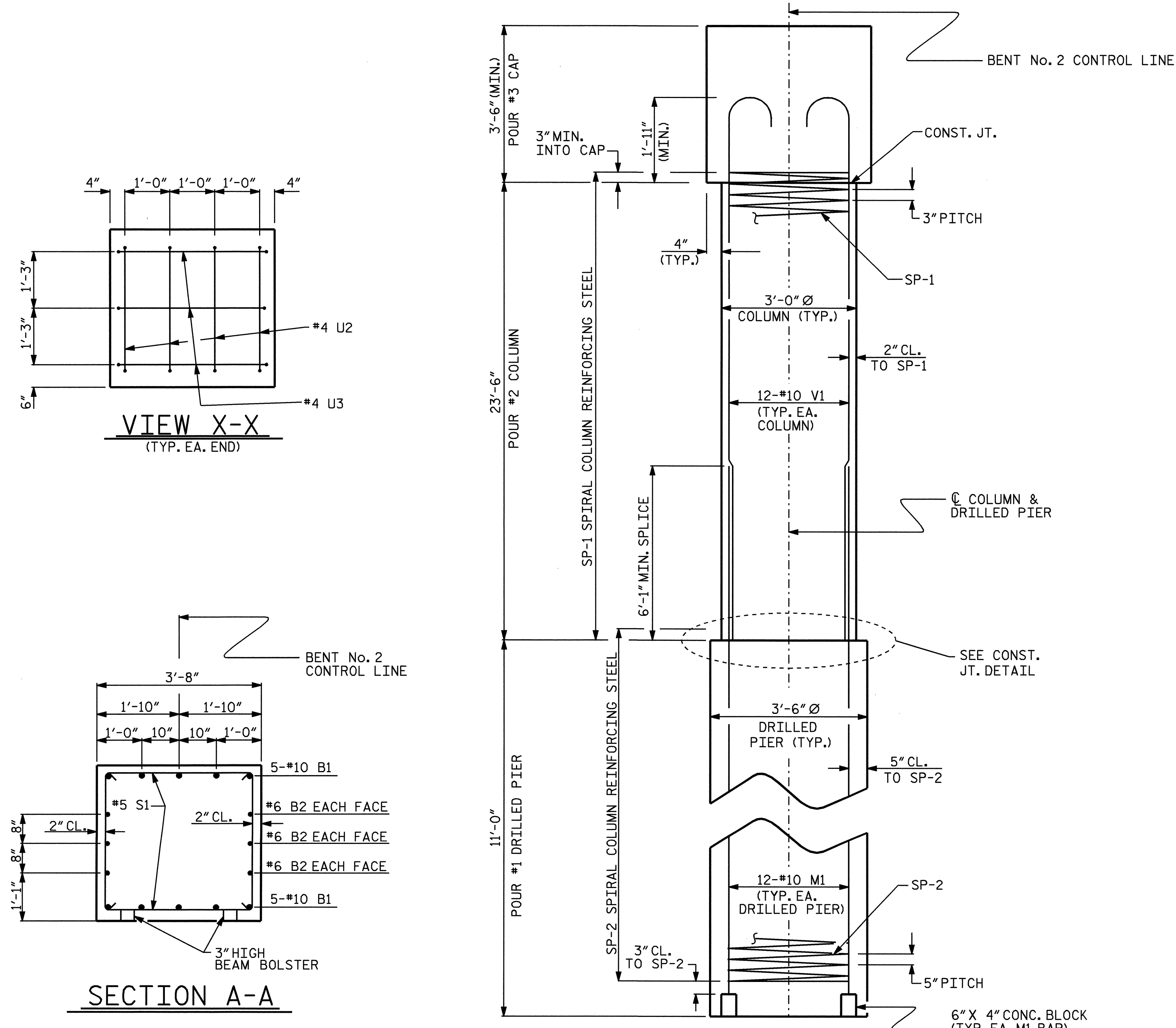
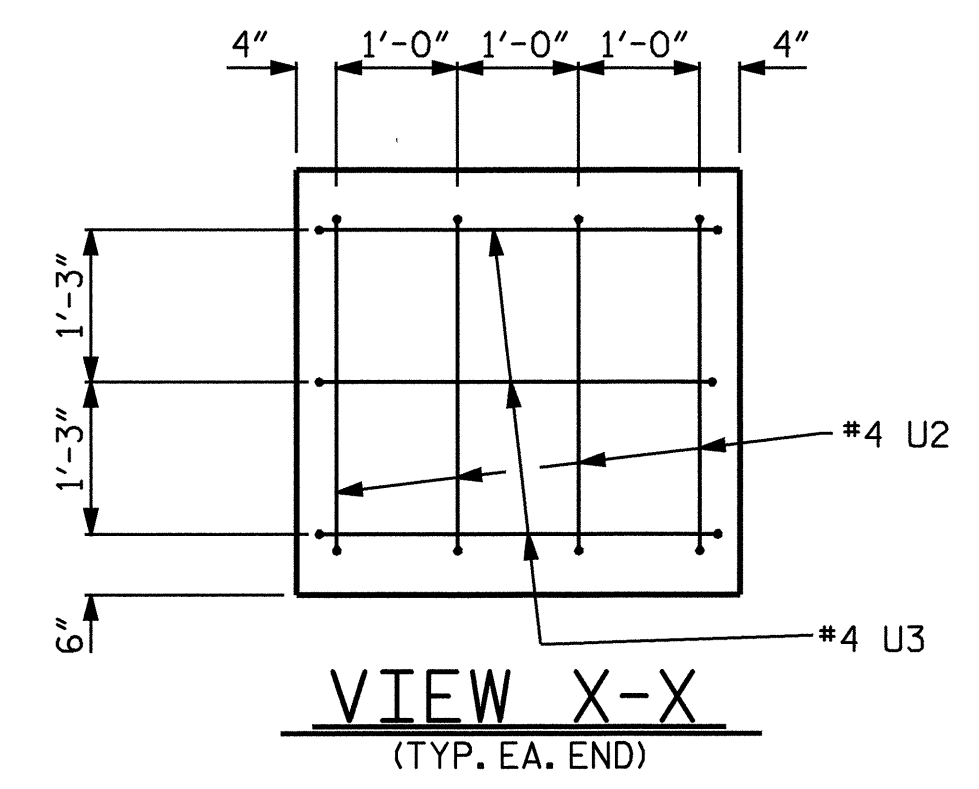


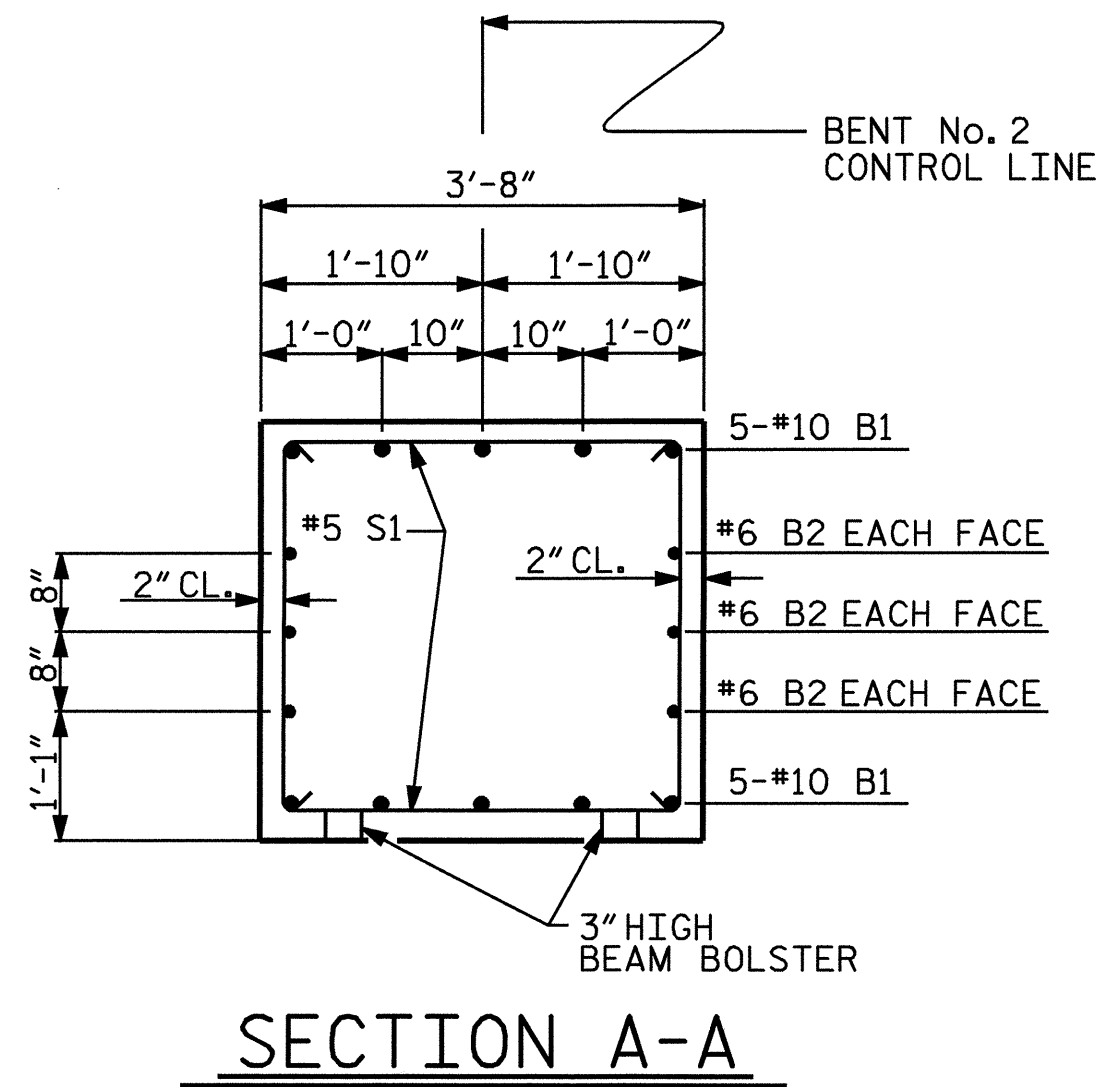
PLAN OF DRILLED PIERS & COLUMNS



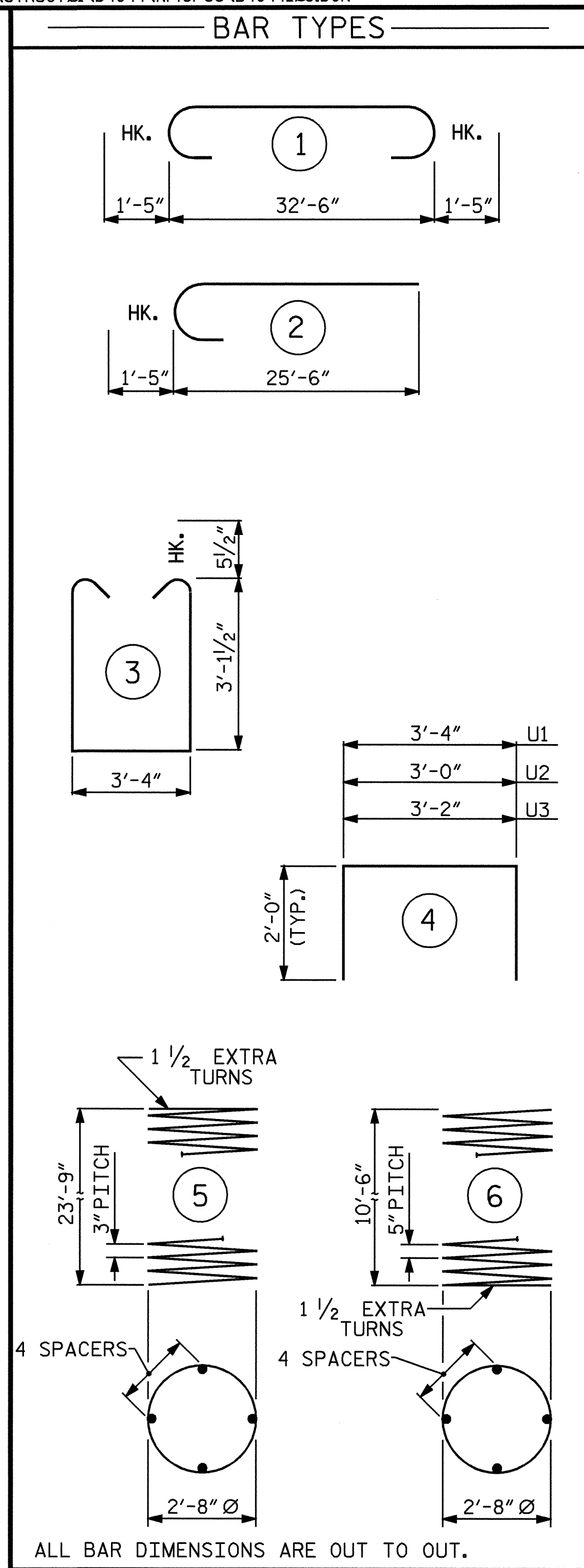
END ELEVATION



VIEW X-X
(TYP. EA. END)



SECTION A-A

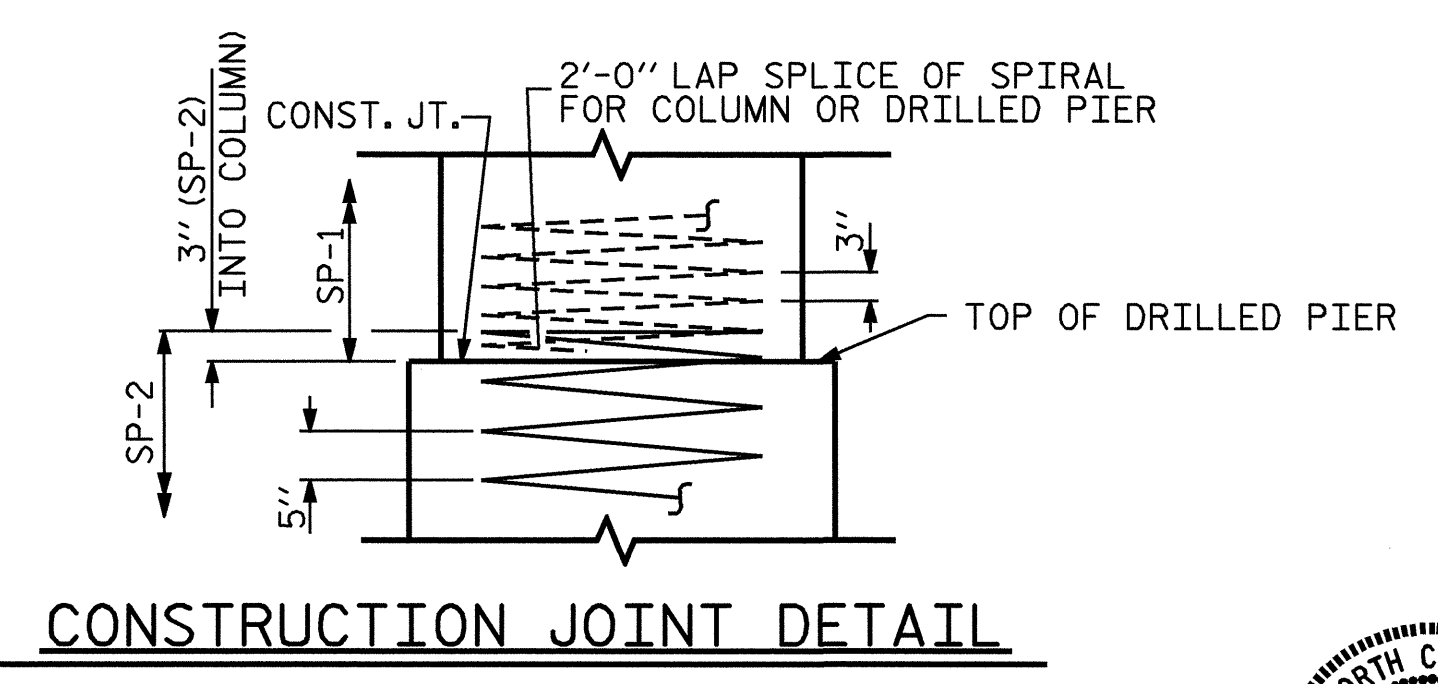


ALL BAR DIMENSIONS ARE OUT TO OUT.

BILL OF MATERIAL					
BENT No. 2					
BAR	NO.	SIZE	TYPE	LENGTH	WEIGHT
B1	10	#10	1	35'-4"	1520
B2	6	#6	STR	32'-8"	294
B3	5	#4	STR	13'-2"	44
M1	24	#10	STR	19'-7"	2022
S1	55	#5	3	10'-6"	602
U1	32	#4	4	7'-4"	157
U2	8	#4	4	7'-0"	37
U3	6	#4	4	7'-2"	29
V1	24	#10	2	26'-11"	2780

REINFORCING STEEL					
7485 LBS.					
SP-1	2	**	5	800'-4"	1069
SP-2	2	*	6	222'-1"	463
SPIRAL COLUMN REINFORCING STEEL					
1532 LBS.					
* THE SP-2 SPIRAL REINFORCING STEEL SHALL BE W31 OR D-31 COLD DRAWN WIRE OR #5 PLAIN OR DEFORMED BAR,					
** THE SP-1 SPIRAL REINFORCING STEEL SHALL BE W20 OR D-20 COLD DRAWN WIRE OR #4 PLAIN OR DEFORMED BAR.					
CLASS A CONCRETE BREAKDOWN					
POUR #2 (COLUMNS)				=	12.3 C.Y.
POUR #3 (CAP)				=	16.7 C.Y.
TOTAL CLASS A CONCRETE				=	29.0 C.Y.

DRILLED PIERS:	
DRILLED PIER CONCRETE POUR #1 (DRILLED PIERS)	= 7.8 C.Y.
3'-6" Ø DRILLED PIER IN SOIL	= 12.0 LIN. FT.
3'-6" Ø DRILLED PIER NOT IN SOIL	= 10.0 LIN. FT.
CSL TUBES	= 108.0 LIN. FT.



CONSTRUCTION JOINT DETAIL

PROJECT NO. B-4044
BURKE COUNTY
 STATION: 17+05.00 -L-

SHEET 2 OF 2

STATE OF NORTH CAROLINA
 DEPARTMENT OF TRANSPORTATION
 RALEIGH

SUBSTRUCTURE
 BENT No. 2

REVISIONS					
NO.	BY:	DATE:	NO.	BY:	DATE:
1			3		
2			4		

SHEET NO. S-25
 TOTAL SHEETS 35

DRAWN BY: N. PIERCE DATE: 5/05
 CHECKED BY: M. BRITT DATE: 5/05

