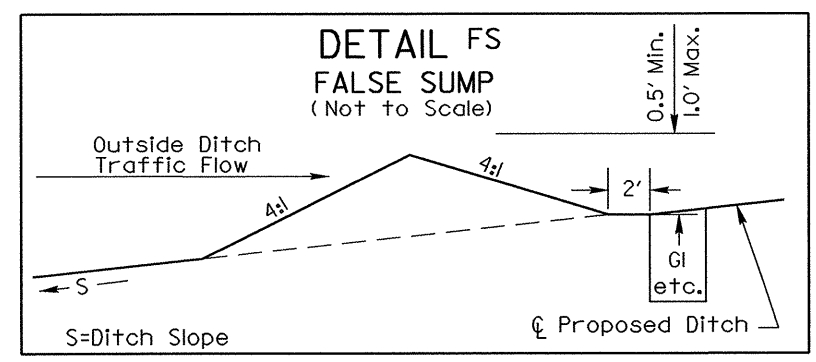
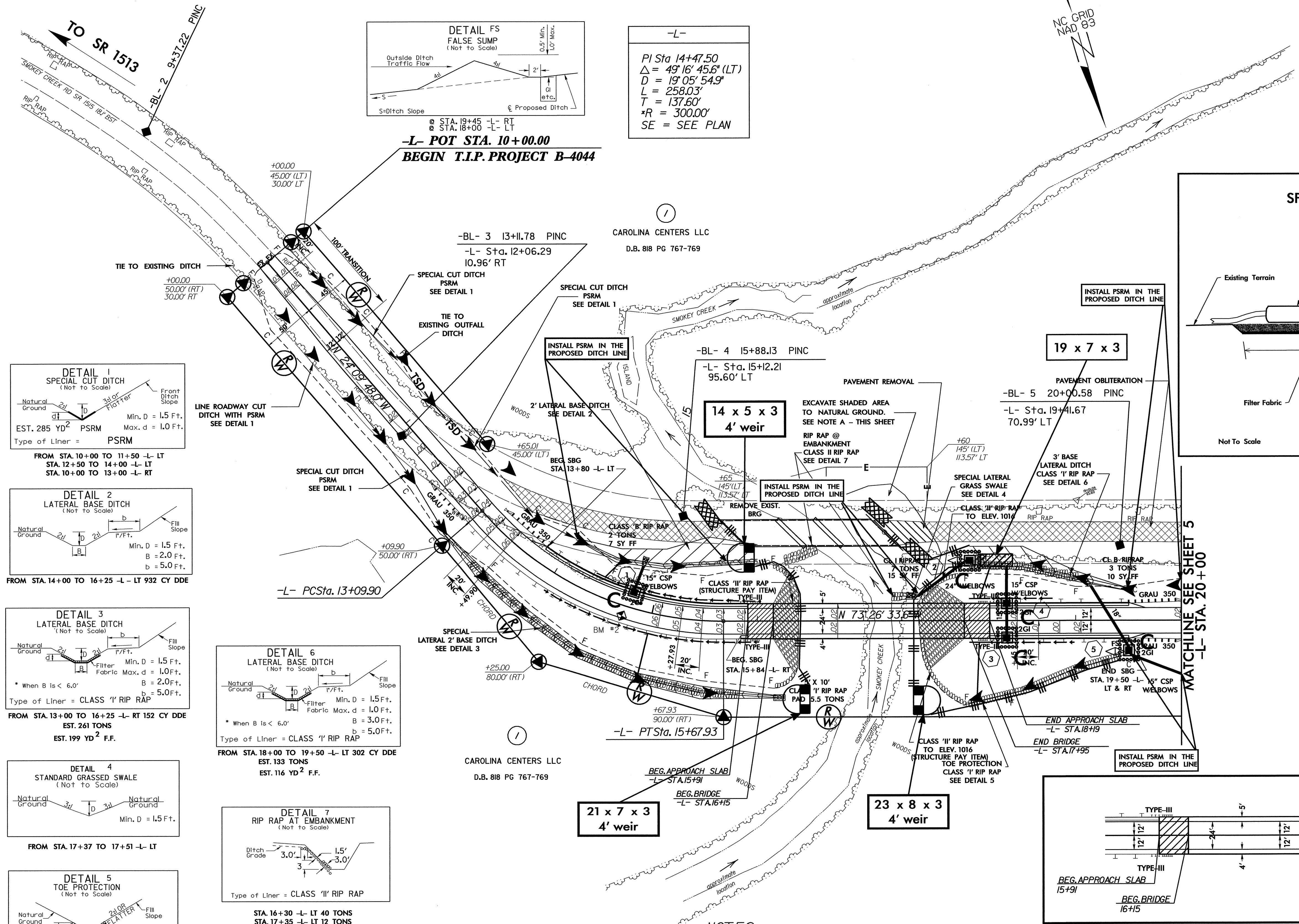


8/17/99

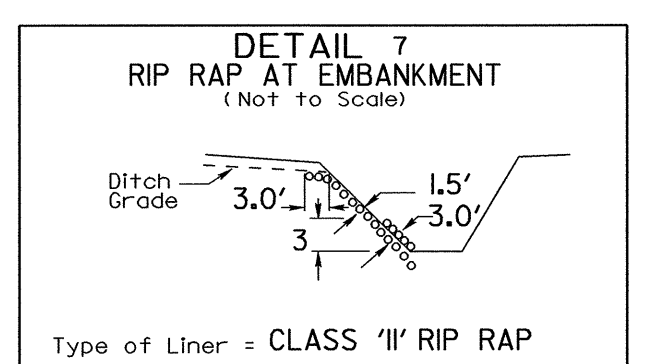
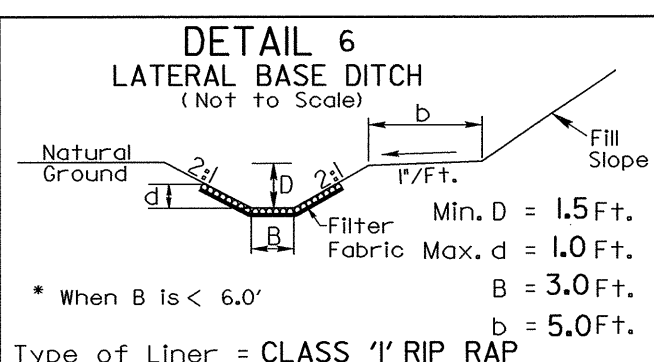
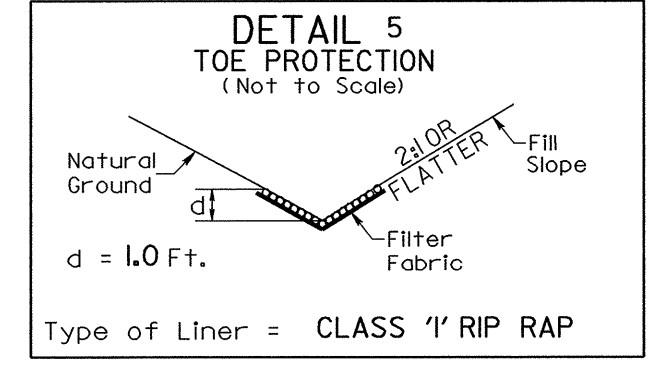
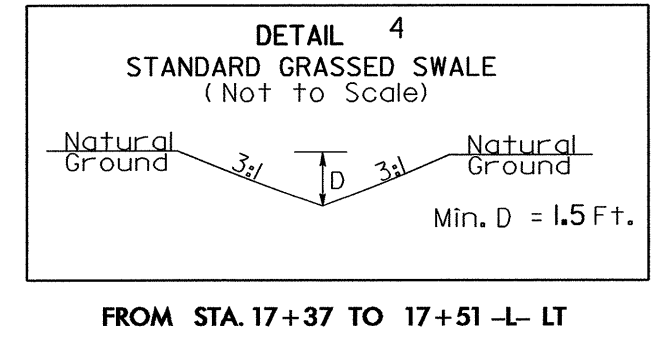
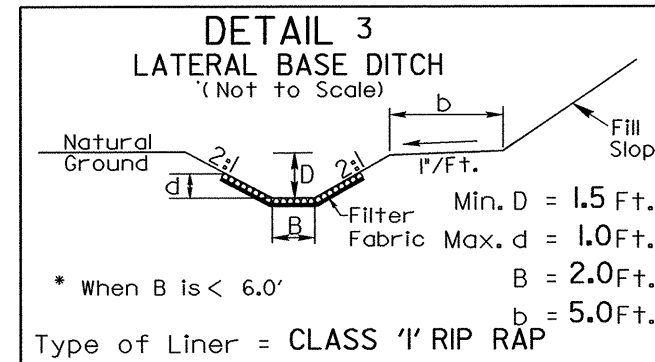
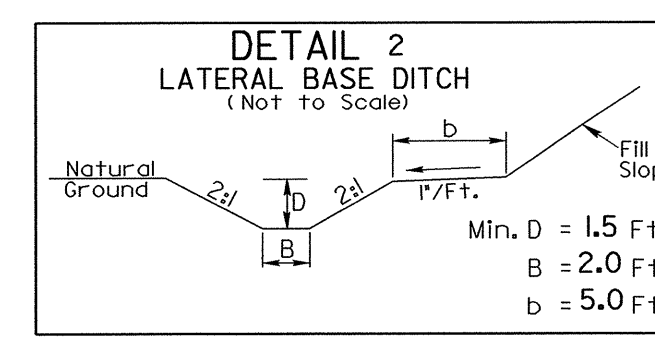
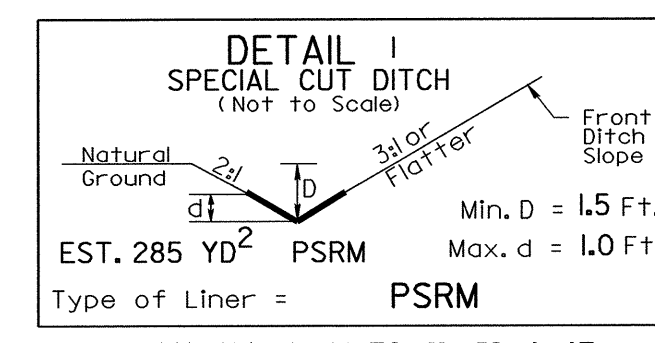
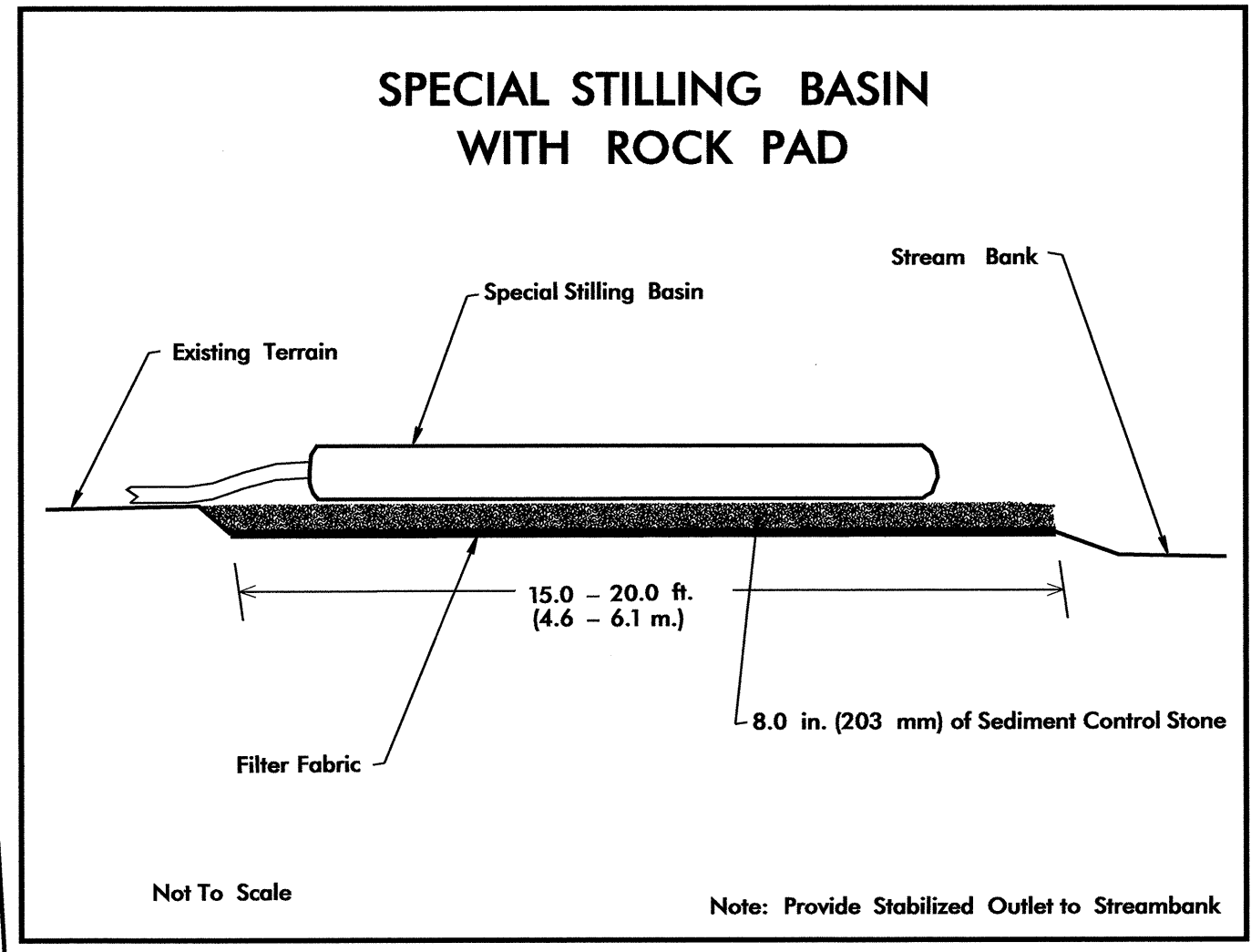
25-jul-2005 10:05
c:\pwworkspace\sethings\inchen\desk-top\4044\roadway\proj\4044_rdu\psh04.dgn
AT:REV:2/14/05
inchen

PROJECT REFERENCE NO. B-4044	SHEET NO. EC-5/CONST.4
RW SHEET NO.	
ROADWAY DESIGN ENGINEER	HYDRAULICS ENGINEER

NOTE:
UTILIZE SPECIAL STILLING BASIN WHERE APPLICABLE



-L-
PI Sta 14+47.50
 $\Delta = 49' 16'' 45.6''$ (LT)
 $D = 19' 05'' 54.9''$
 $L = 258.03'$
 $T = 137.60'$
 $R = 300.00'$
SE = SEE PLAN



21 x 7 x 3
4' weir

23 x 8 x 3
4' weir

19 x 7 x 3

14 x 5 x 3
4' weir

*DESIGN EXCEPTION REQUIRED FOR DESIGN SPEED (35 MPH), MINIMUM HORIZONTAL CURVE RADIUS (300') AND HORIZONTAL STOPPING SIGHT DISTANCE (165')

NOTES

A: AREA TO BE GRADED TO NATURAL GROUND PER THE DISCRETION OF THE ENGINEER.

SKETCH SHOWING BRIDGE/PAVEMENT RELATIONSHIP

FOR PROFILE OF -L- SEE SHEET 6

REVISIONS