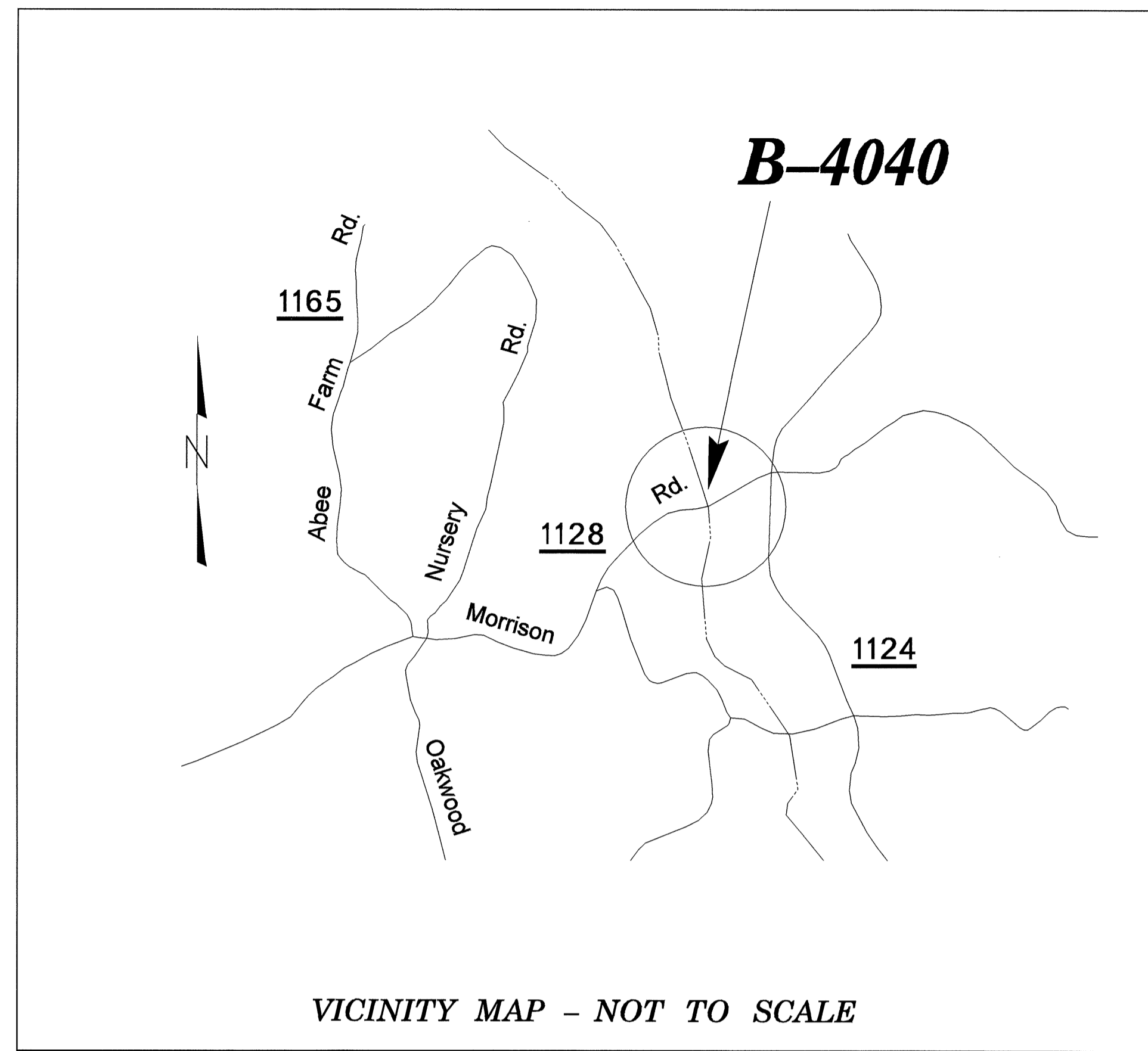


SURVEY CONTROL SHEET B-4040



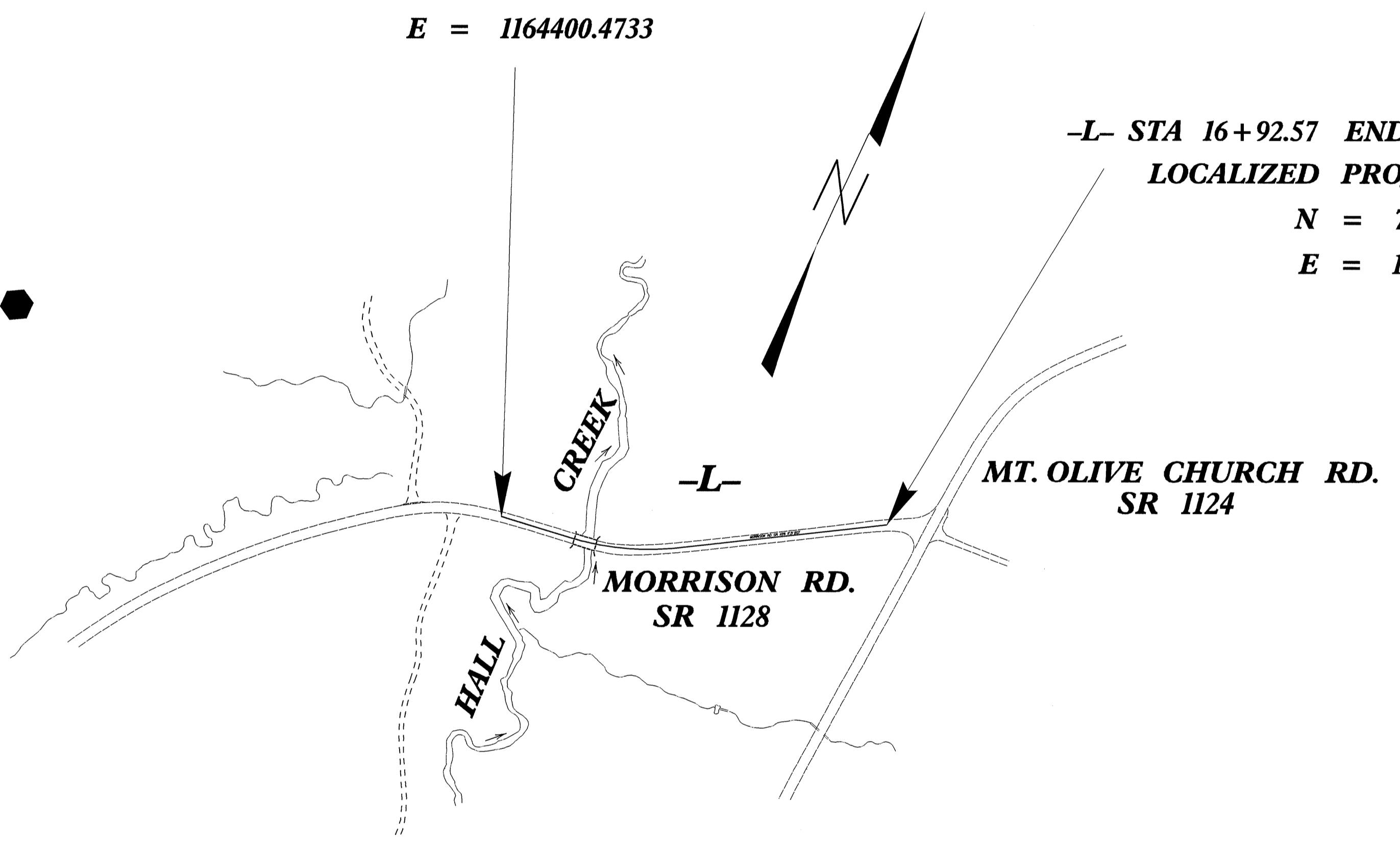
DATUM DESCRIPTION

THE LOCALIZED COORDINATE SYSTEM DEVELOPED FOR THIS PROJECT IS BASED ON THE STATE PLANE COORDINATES ESTABLISHED BY NCDOT FOR MONUMENT "B4040-1" WITH NAD 83 STATE PLANE GRID COORDINATES OF NORTHING: 702337.3720(f) EASTING: 1163465.3110(f) THE AVERAGE COMBINED GRID FACTOR USED ON THIS PROJECT (GROUND TO GRID) IS: 0.999802894 THE N.C. LAMBERT GRID BEARING AND LOCALIZED HORIZONTAL GROUND DISTANCE FROM "B4040-1" TO -L- STATION 10+00.00 IS N 88°24'00" E 935.53' ALL LINEAR DIMENSIONS ARE LOCALIZED HORIZONTAL DISTANCES VERTICAL DATUM USED IS NAVD 88

-L- STA 10+00.00 BEGIN STATE PROJECT B-4040
LOCALIZED PROJECT COORDINATES
 N = 702363.4935
 E = 1164400.4733

-L- STA 16+92.57 END STATE PROJECT B-4040
LOCALIZED PROJECT COORDINATES
 N = 702638.9067
 E = 1165025.1803

NCDOT GPS STATION "B4040-1"
LOCALIZED PROJECT COORDINATES
 N = 702337.3720
 E = 1163465.3110



NCDOT GPS STATION "B4040-2"
LOCALIZED PROJECT COORDINATES
 N = 701301.6880
 E = 1163577.6740

NOTES:

THE CONTROL DATA FOR THIS PROJECT CAN BE FOUND ELECTRONICALLY BY SELECTING PROJECT CONTROL DATA AT:
[HTTP://WWW.DOH.DOT.STATE.NC.US/PRECONSTRUCT/HIGHWAY/LOCATION/PROJECT](http://www.doh.dot.state.nc.us/preconstruct/highway/location/project)
 THE FILE TO BE FOUND IS AS FOLLOWS:
 B4040_LS_CONTROL_040506.TXT

SITE CALIBRATION INFORMATION HAS NOT BEEN PROVIDED FOR THIS PROJECT. IF FURTHER INFORMATION IS NEEDED, PLEASE CONTACT THE LOCATION AND SURVEYS UNIT.

- INDICATES GEODETIC CONTROL MONUMENTS USED OR SET FOR HORIZONTAL PROJECT CONTROL BY THE NCDOT LOCATION AND SURVEYS UNIT.

PROJECT CONTROL ESTABLISHED USING GLOBAL POSITIONING SYSTEM.
 NETWORK ESTABLISHED FROM NGS ONLINE POSITIONING USER SERVICE (OPUS)

NOTE: DRAWING NOT TO SCALE

29-SEP-2004 15:55
 R:\Roadway\Projects\B4040_1s_1c_040506.dgn
 JDGraham