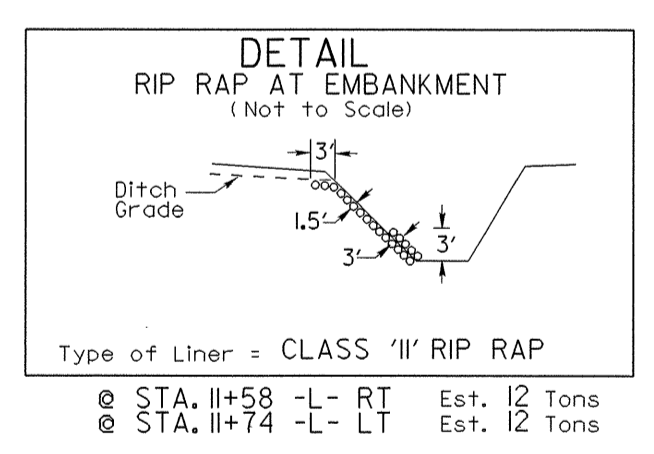
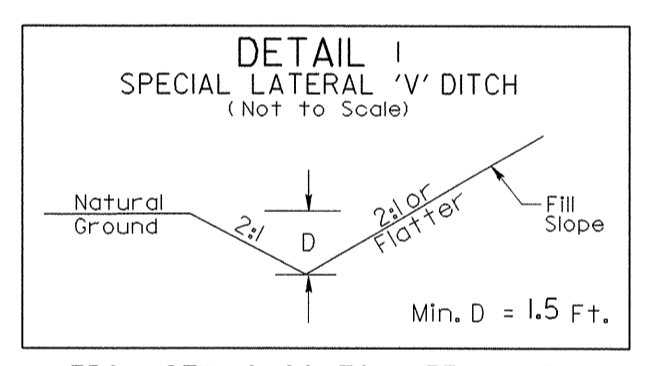
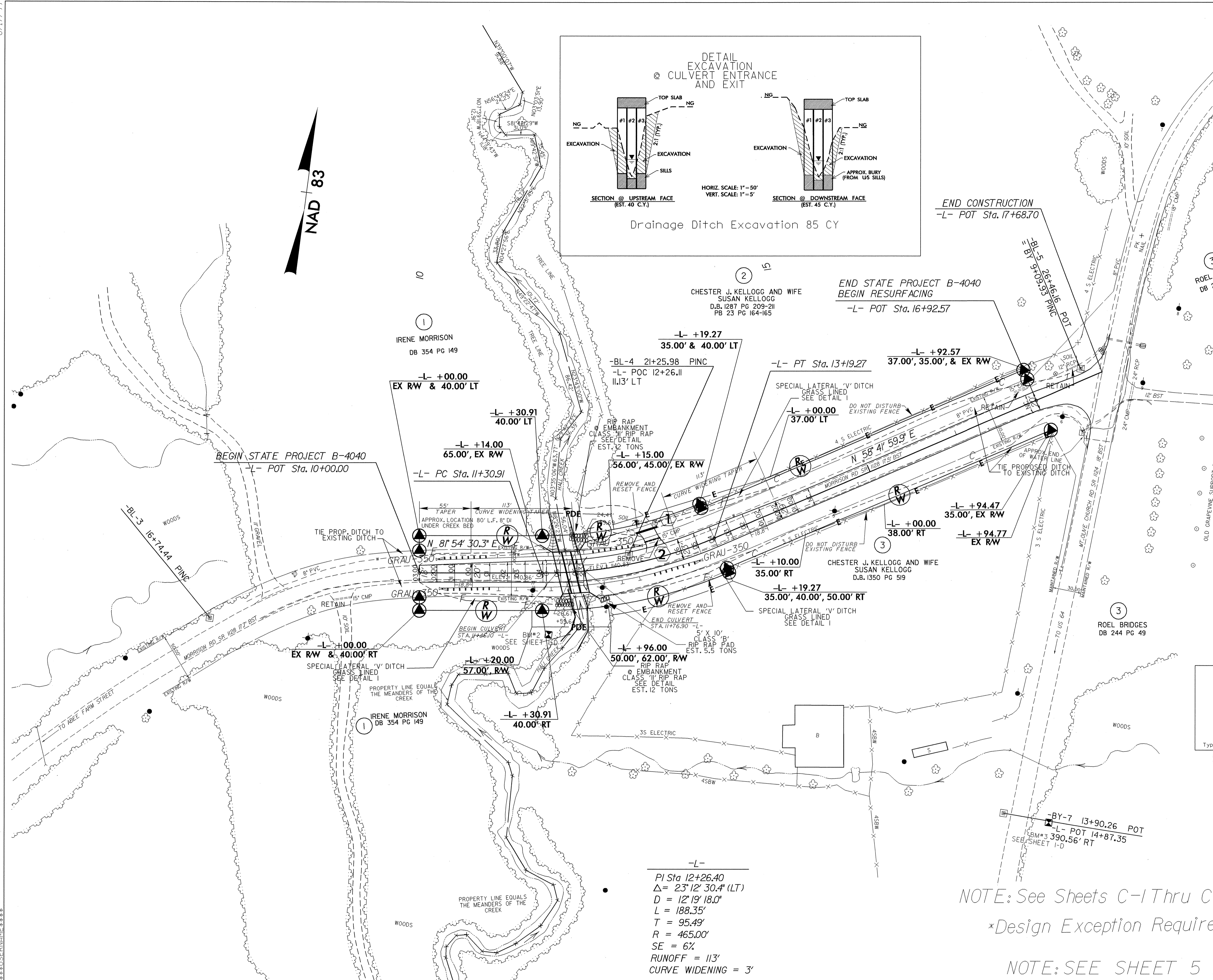
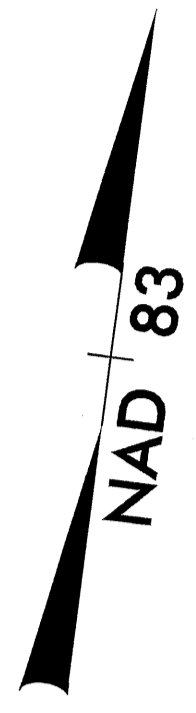
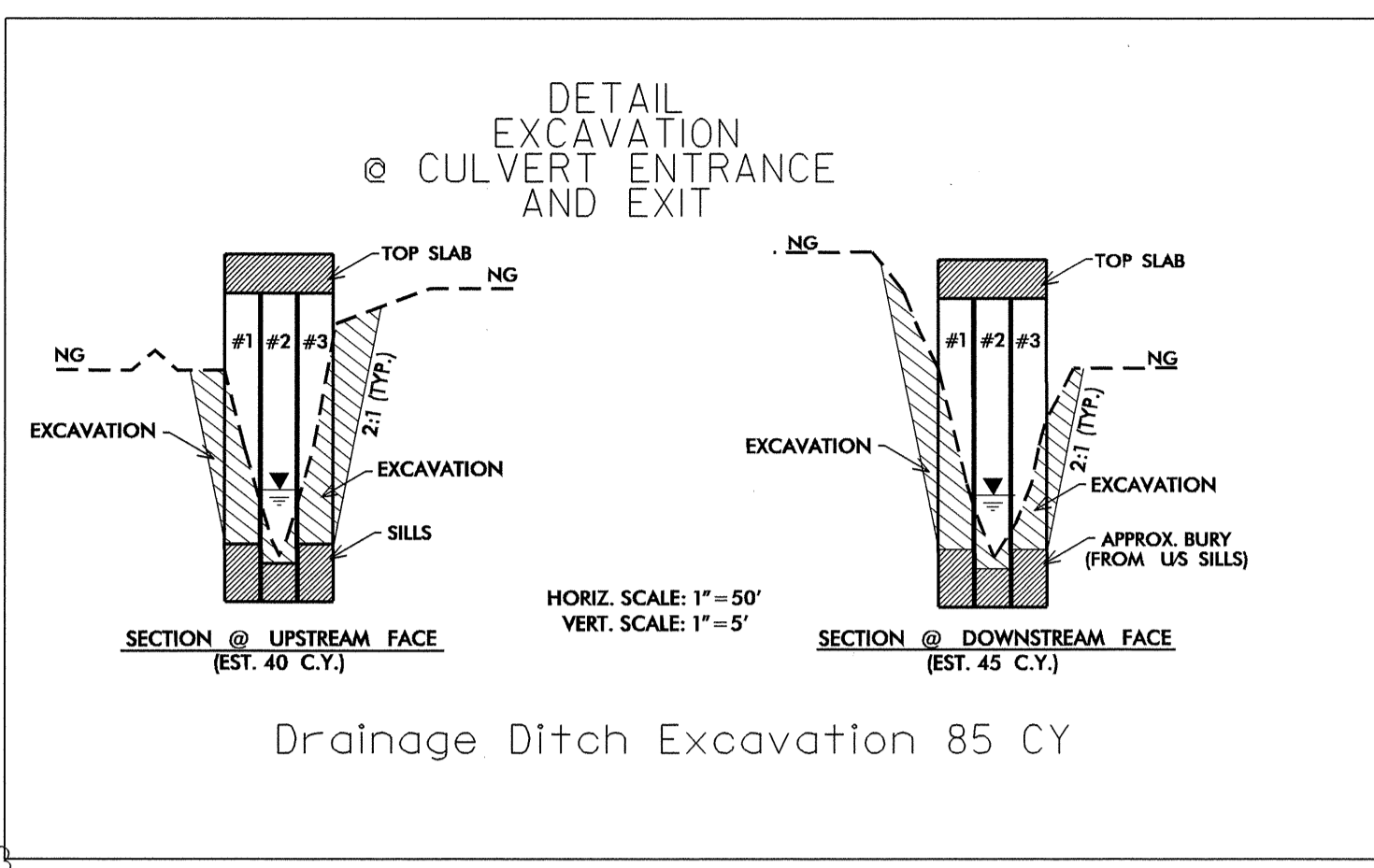


8/17/99

PROJECT REFERENCE NO. B-4040	SHEET NO. 4
RW SHEET NO.	
ROADWAY DESIGN ENGINEER NORTH CAROLINA PROFESSIONAL SEAL JOHN C. LANSFORD 8/17/05	HYDRAULICS NORTH CAROLINA PROFESSIONAL SEAL PAUL E. FISHER 8/16/05



-L-
PI Sta 12+26.40
Δ = 23° 12' 30.4" (LT)
D = 12' 19' 18.0"
L = 188.35'
T = 95.49'
R = 465.00'
SE = 6%
RUNOFF = 113'
CURVE WIDENING = 3'

NOTE: See Sheets C-1 Thru C-5 for Culvert Plans
*Design Exception Required for Design Speed
NOTE: SEE SHEET 5 FOR -L- PROFILE

16-AUG-2005 08:26
c:\pcc\work\psh4\psh4.dgn
\$\$\$\$\$USER\$NAME\$\$\$\$