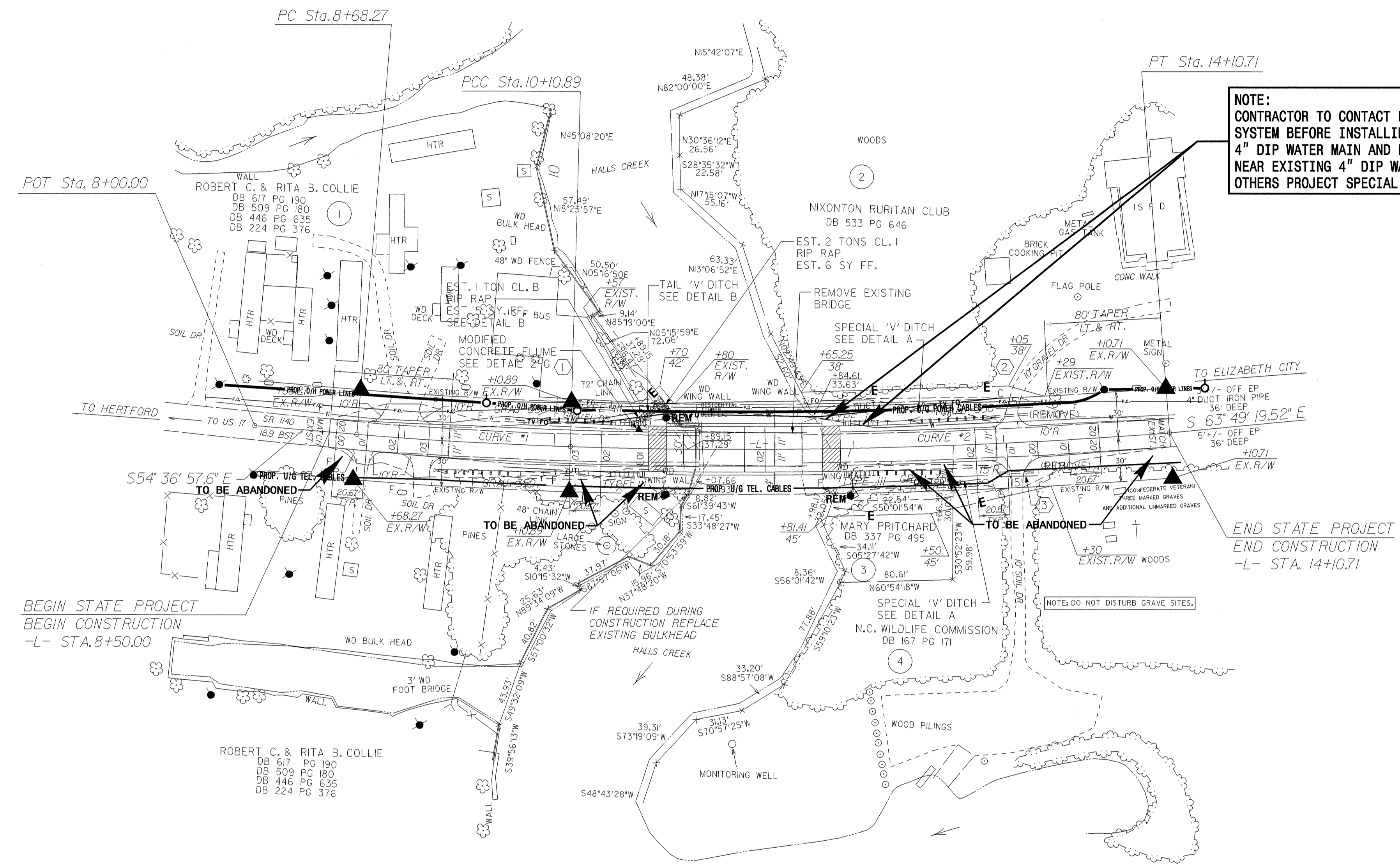


UTILITIES BY OTHERS

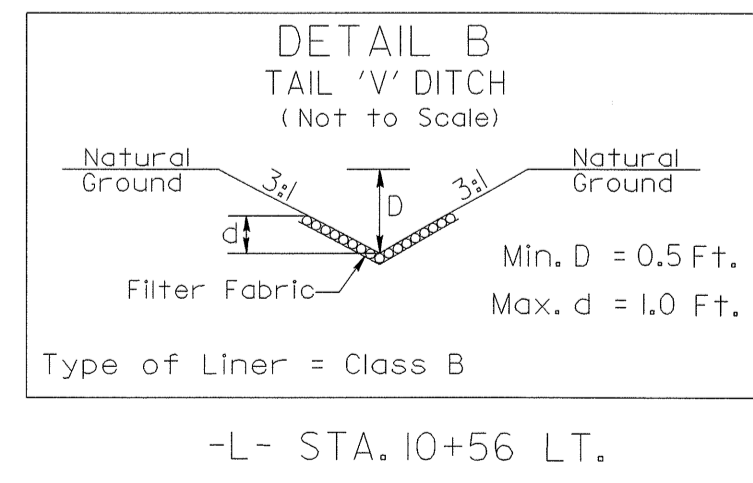
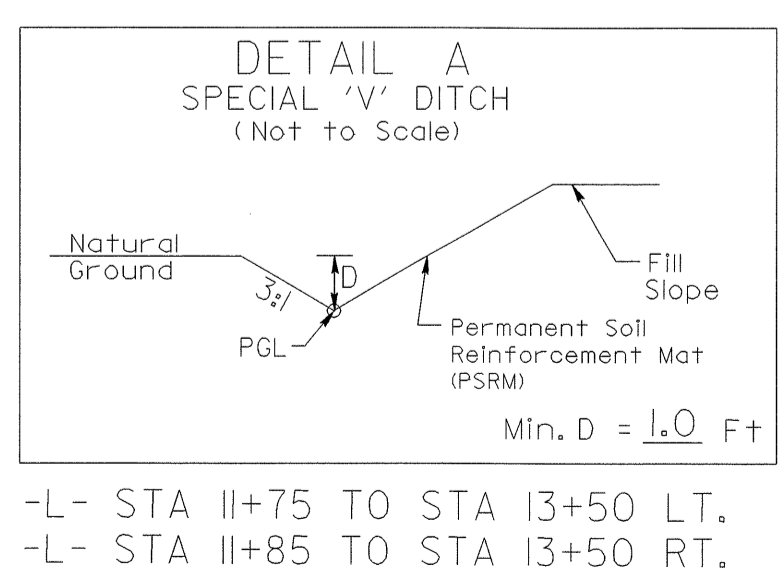
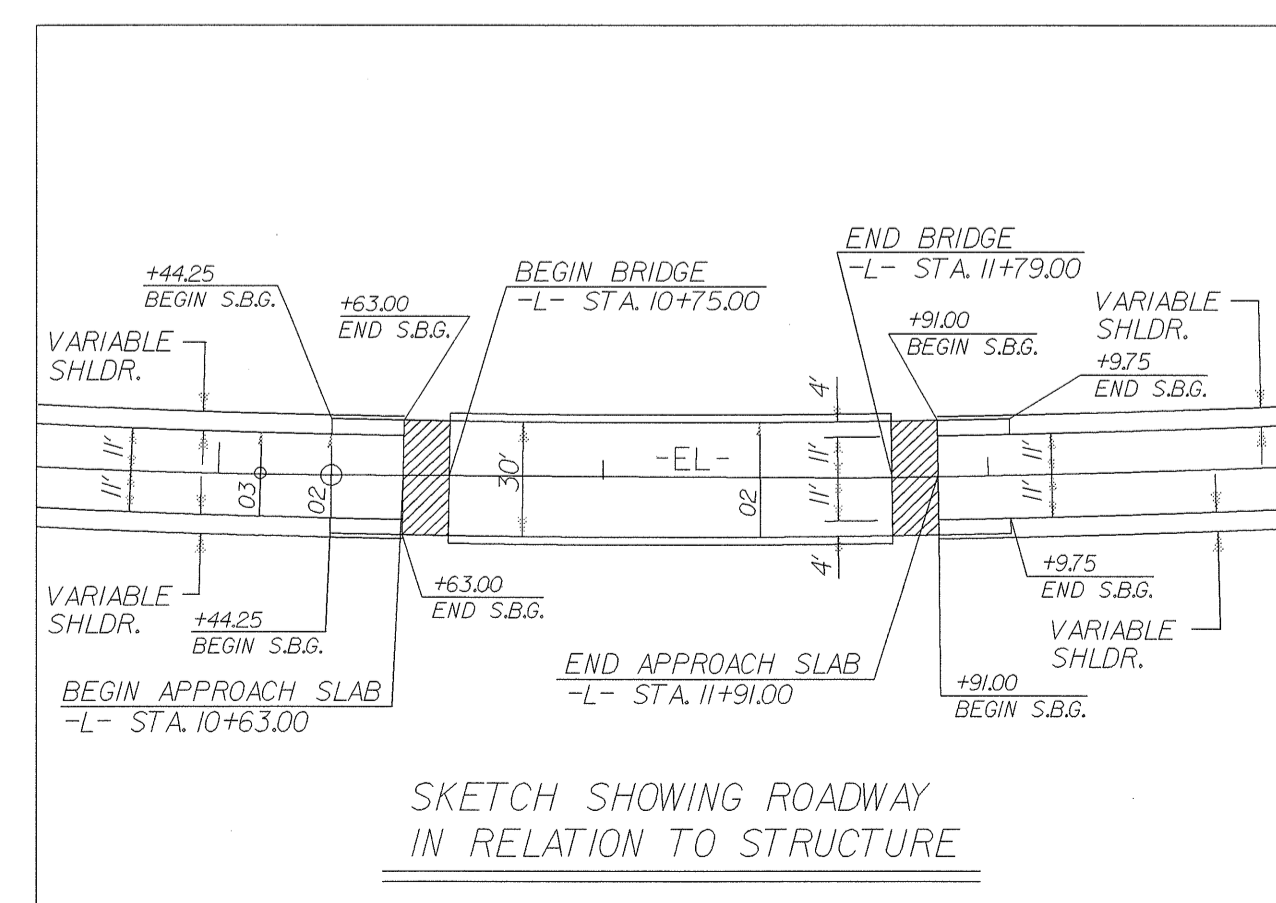
NOTE:
ALL PROPOSED UTILITY WORK SHOWN ON THIS SHEET WILL BE DONE BY OTHERS

NOTE:
CONTRACTOR TO CONTACT PASQUOTANK COUNTY WATER SYSTEM BEFORE INSTALLING GUARDRAIL OVER EXISTING 4" DIP WATER MAIN AND EXCAVATING FOR END BENT NO. 2 NEAR EXISTING 4" DIP WATER MAIN- SEE UTILITY BY OTHERS PROJECT SPECIAL PROVISIONS.

REVISIONS



DATUM DESCRIPTION
 THE LOCALIZED COORDINATE SYSTEM DEVELOPED FOR THIS PROJECT IS BASED ON THE STATE PLANE COORDINATES ESTABLISHED BY NCDOT FOR MONUMENT "B4222-2"
 WITH NAD 1983/95 STATE PLANE GRID COORDINATES OF NORTHING: 910586.368(1) EASTING: 2802663.673(1)
 THE AVERAGE COMBINED GRID FACTOR USED ON THIS PROJECT (GROUND TO GRID) IS: 1.00002093
 THE N.C. LAMBERT GRID BEARING AND LOCALIZED HORIZONTAL GROUND DISTANCE FROM "B4222-2" TO "L" STATION 8+50.00 IS
 S 52° 27' 54.5" E 706.07'
 ALL LINEAR DIMENSIONS ARE LOCALIZED HORIZONTAL DISTANCES
 VERTICAL DATUM USED IS NAVD 88



-L- CURVE 1
 PI Sta. 9+39.60
 $\Delta = 3' 12' 32.0"$ (LT)
 $D = 2' 15' 00.0"$
 $L = 142.62'$
 $T = 71.33'$
 $R = 2,546.48'$
 $e = .03$
 RUNOFF = SEE PLANS

-L- CURVE 2
 PI Sta. 12+10.98
 $\Delta = 5' 59' 49.9"$ (LT)
 $D = 1' 30' 00.0"$
 $L = 399.81'$
 $T = 200.09'$
 $R = 3,819.72'$
 $e = .02$
 RUNOFF = SEE PLANS

■ DENOTES APPROACH SLAB

10/26/98
 RA: ut: 30-DEC-2004 16:22
 D:\Projects\B4222\4_U02\ut.ctb.psh.dgn
 Date Plotted: 11/15/04 11:53:33
 PLOT