

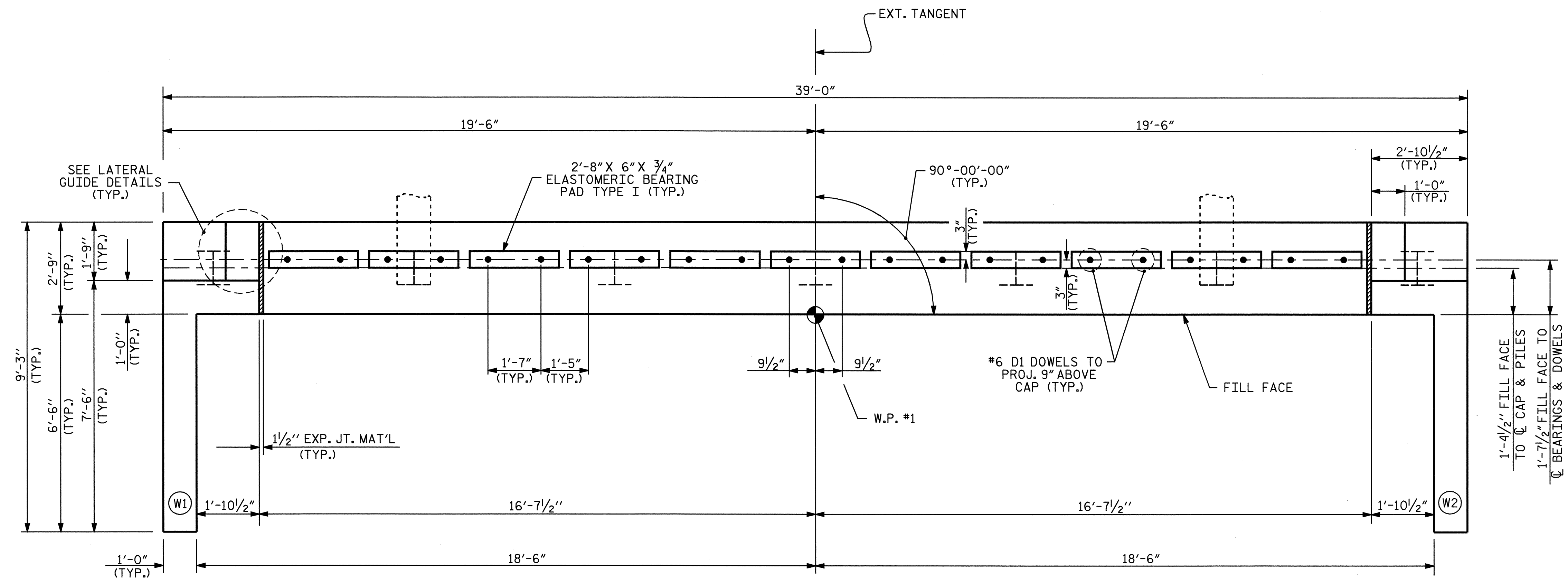
NOTES

STIRRUPS IN CAP MAY BE SHIFTED AS NECESSARY TO CLEAR #6 DOWELS.

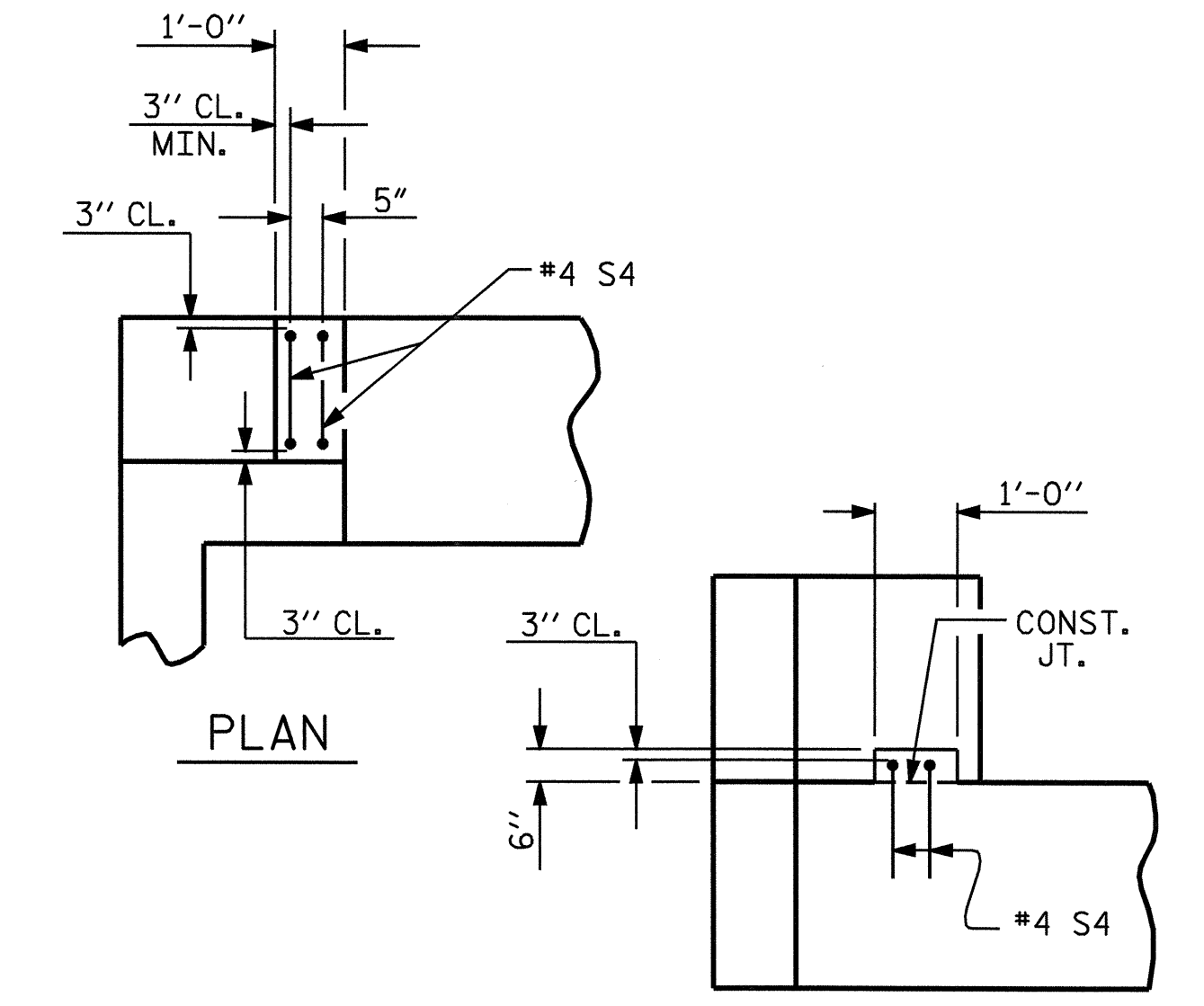
THE LATERAL GUIDE AT EACH END OF THE CAP IS NOT TO BE POURED UNTIL AFTER THE CORED SLAB UNITS ARE IN PLACE.

THE CONTRACTOR SHALL PROVIDE FOR INSTALLATION OF THE 4" Ø DRAIN PIPE THROUGH THE WING WALL AS REQUIRED FOR REINFORCED BRIDGE APPROACH FILLS, SEE THE ROADWAY PLANS. REINFORCING STEEL IN THE WING WALL MAY BE SHIFTED AS NECESSARY TO CLEAR THE DRAIN PIPE.

FOR PILE SPLICE DETAILS, SEE SHEET 3 OF 3.



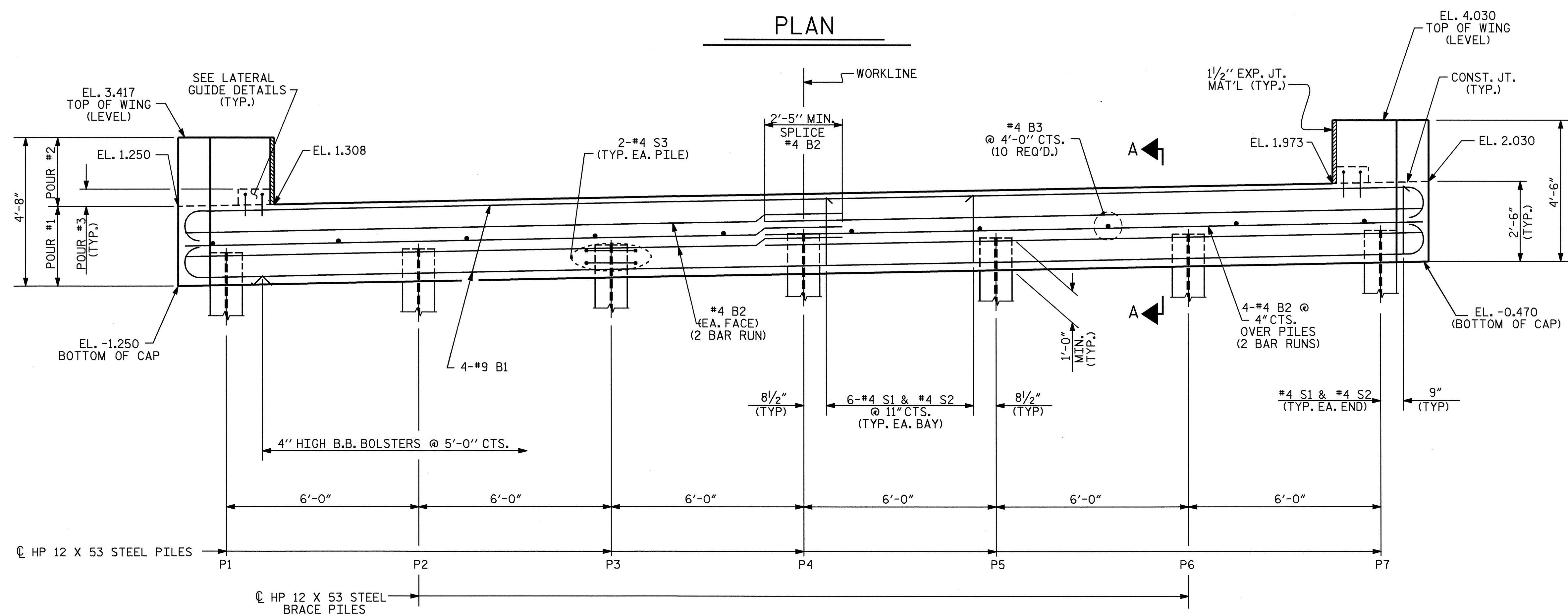
PLAN



ELEVATION

LATERAL GUIDE DETAILS

(EACH END SIMILAR)



ELEVATION

TOP OF PILE ELEVATION CHART

P1	P2	P3	P4	P5	P6	P7
-0.210	-0.090	-0.030	0.150	0.270	0.390	0.510

PROJECT NO. B-4222
PASQUOTANK COUNTY
STATION: 11+27.00-L-

SHEET 1 OF 3

STATE OF NORTH CAROLINA
DEPARTMENT OF TRANSPORTATION
RALEIGH

END BENT #1

REVISIONS						SHEET NO.
NO.	BY:	DATE:	NO.	BY:	DATE:	S-9
1			3			TOTAL SHEETS
2			4			20

2/9/05



DRAWN BY: J. LAMBERT DATE: 2/2004
CHECKED BY: M. POOLE DATE: 7/2004