

NOTES

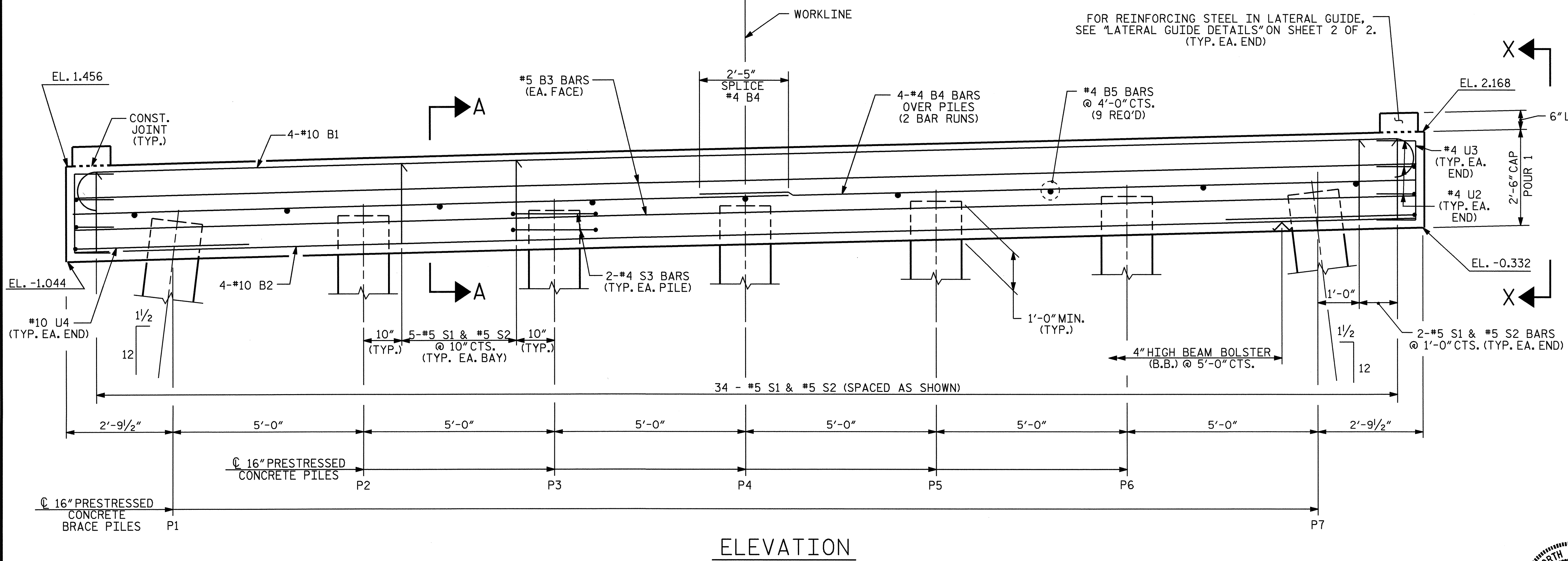
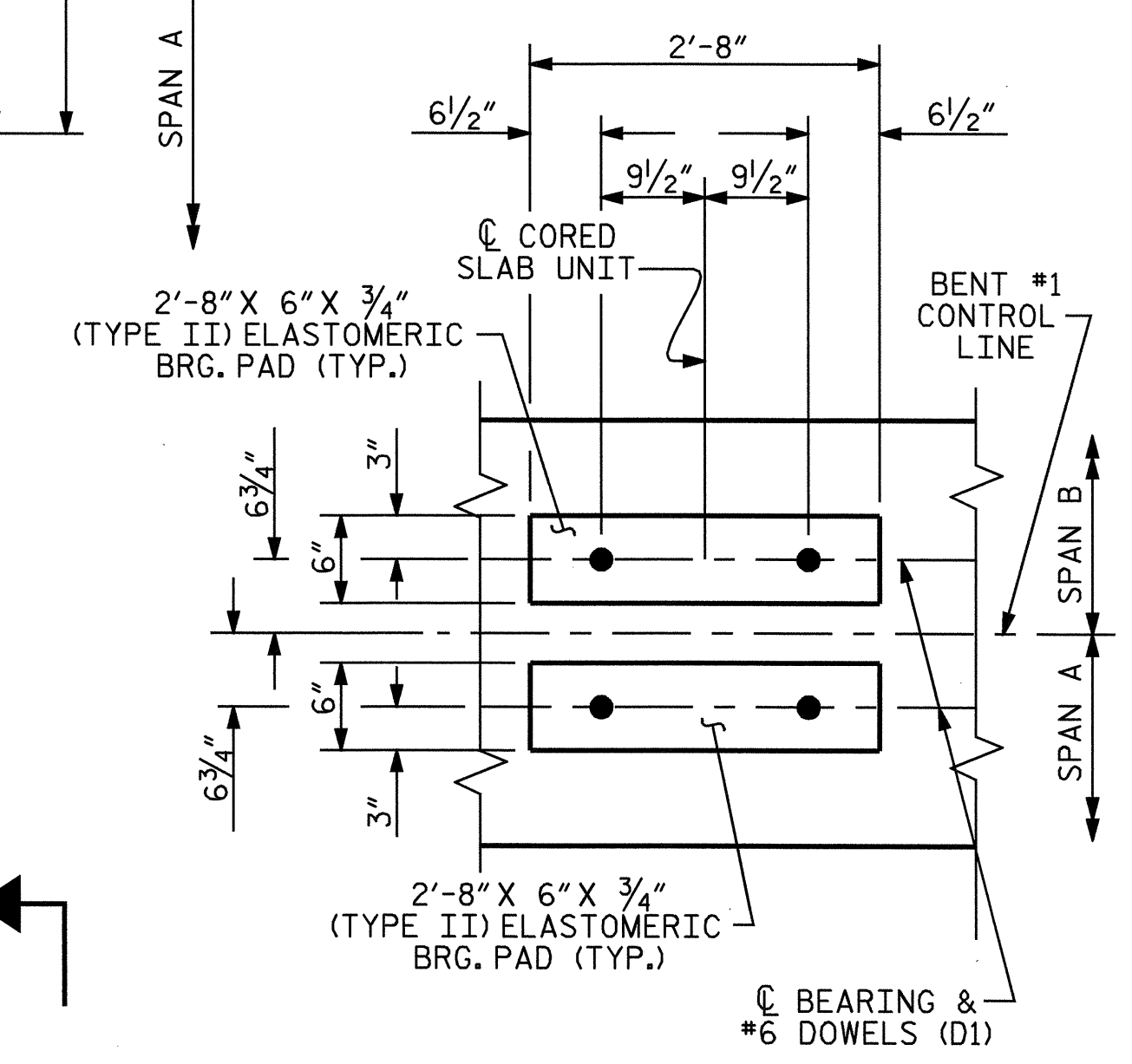
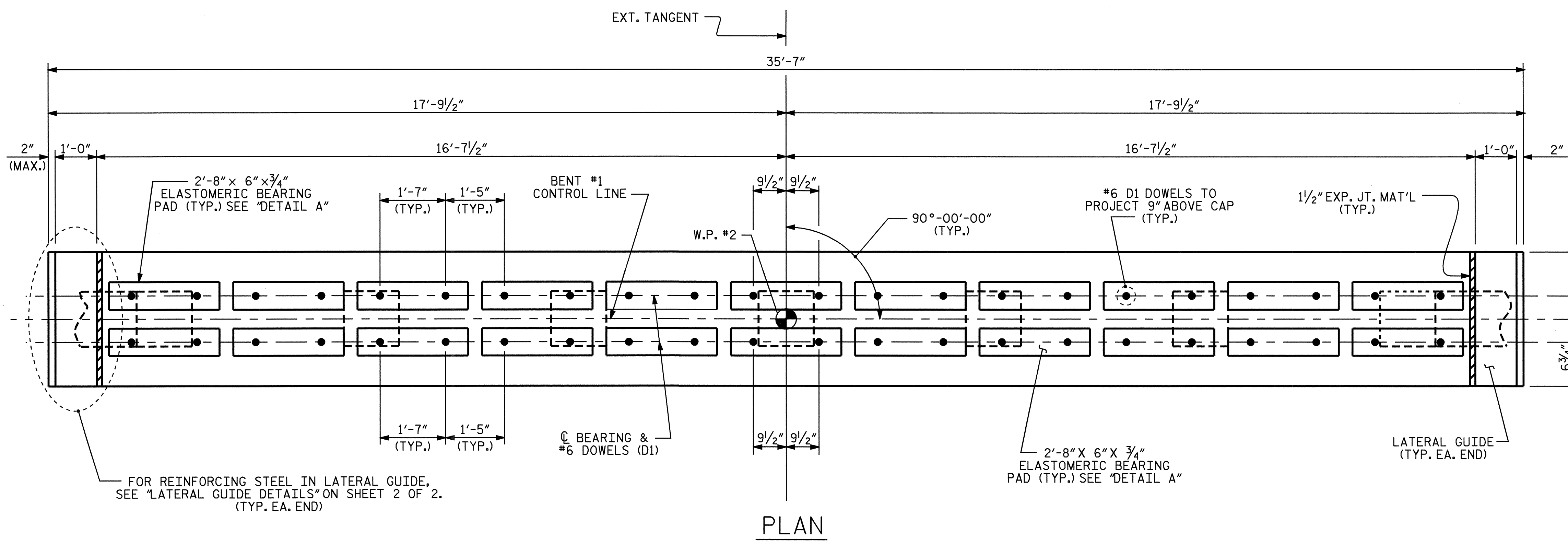
STIRRUPS IN CAP MAY BE SHIFTED AS NECESSARY TO CLEAR #6 DOWELS.

THE LATERAL GUIDE AT EACH END OF THE CAP IS NOT TO BE POURED UNTIL THE CORED SLAB UNITS ARE IN PLACE.

"U" BARS IN END OF CAP MAY BE SHIFTED SLIGHTLY AS NECESSARY TO CLEAR "B" BARS.

CONCRETE DISPLACED BY THE 16" SQUARE PRESTRESSED CONCRETE PILES HAS BEEN DEDUCTED FROM THE CONCRETE QUANTITY.

3" MINIMUM CONCRETE COVER FROM THE END OF THE CAP IS REQUIRED FOR ALL "U" BARS.



TOP OF PILE ELEVATIONS

P1	P2	P3	P4	P5	P6	P7
0.026	0.126	0.226	0.326	0.426	0.526	0.626

PROJECT NO. B-4222
PASQUOTANK COUNTY
 STATION: 11+27.00 -L-
 SHEET 1 OF 2

STATE OF NORTH CAROLINA
 DEPARTMENT OF TRANSPORTATION
 RALEIGH

SUBSTRUCTURE
 BENT #1

REVISIONS						SHEET NO.
NO.	BY:	DATE:	NO.	BY:	DATE:	S-12
1			3			TOTAL SHEETS
2			4			20

6/27/05

DRAWN BY: J. LAMBERT DATE: 5/2004
 CHECKED BY: M. POOLE DATE: 6/2004

