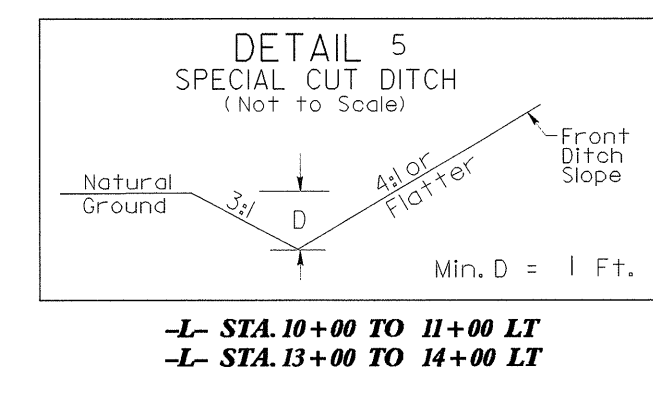
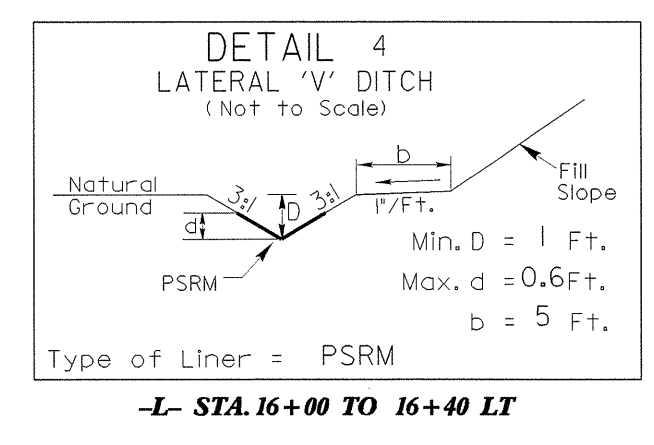
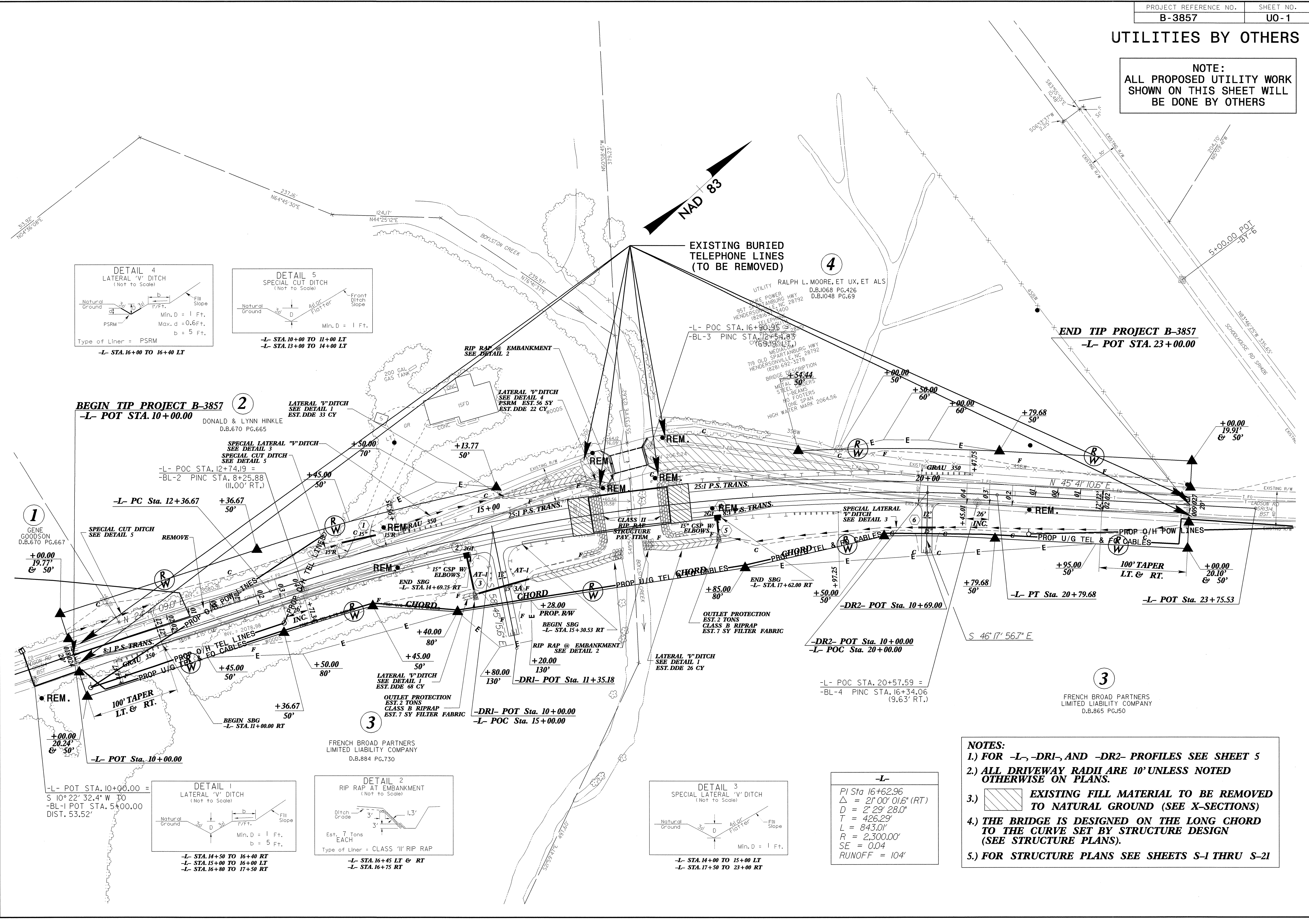


UTILITIES BY OTHERS

NOTE:
ALL PROPOSED UTILITY WORK
SHOWN ON THIS SHEET WILL
BE DONE BY OTHERS



BEGIN TIP PROJECT B-3857
-L- POT STA. 10+00.00

2
DONALD & LYNN HINKLE
D.B.670 PG.665

LATERAL 'V' DITCH
SEE DETAIL 4
EST. DDE 33 CY

SPECIAL LATERAL 'V' DITCH
SEE DETAIL 3
SPECIAL CUT DITCH
SEE DETAIL 5

-L- POC STA. 12+74.19 =
-BL-2 PINC STA. 8+25.88
(11.00' RT.)

-L- PC Sta. 12+36.67

1
GENE GOODSON
D.B.670 PG.667

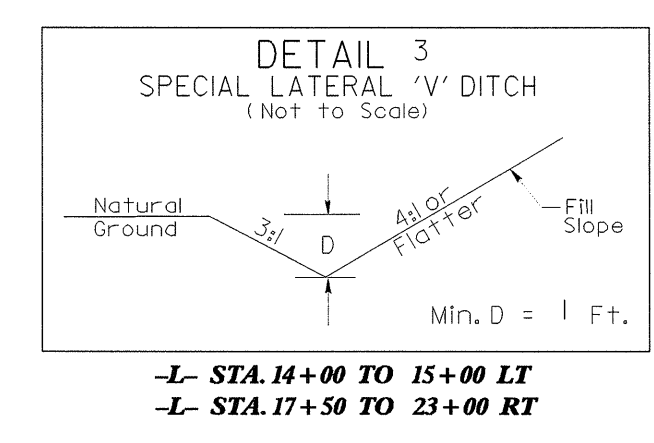
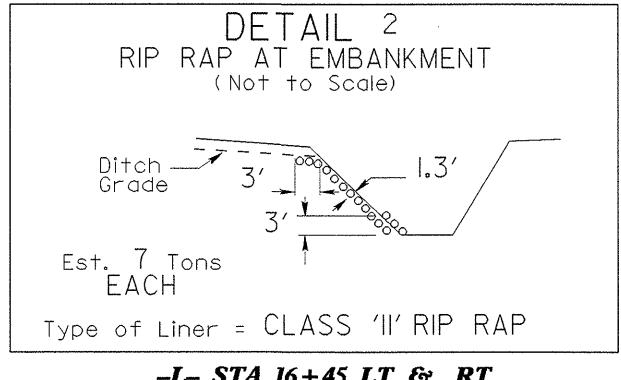
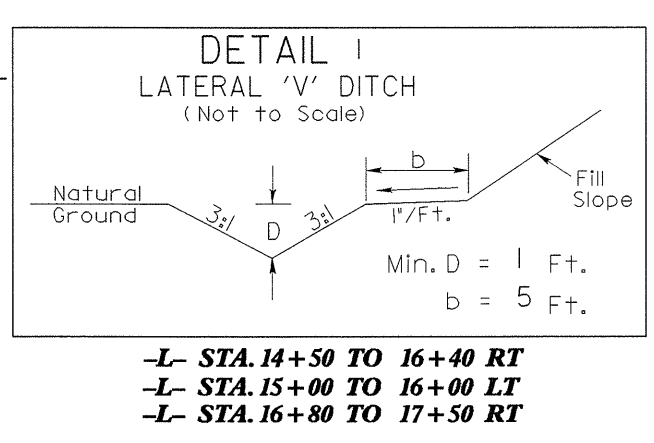
SPECIAL CUT DITCH
SEE DETAIL 5

100' TAPER
LT. & RT.

BEGIN SBG
-L- STA. 11+00.00 RT

-L- POT Sta. 10+00.00

-L- POT STA. 10+00.00 =
S 10° 22' 32.4" W TO
-BL-1 POT STA. 5+00.00
DIST. 53.52'



-L-

PI Sta 16+62.96
Δ = 21° 00' 01.6" (RT)
D = 2' 29" 28.0"
T = 426.29'
L = 843.01'
R = 2,300.00'
SE = 0.04
RUNOFF = 104'

3
FRENCH BROAD PARTNERS
LIMITED LIABILITY COMPANY
D.B.884 PG.730

-DRI- POT Sta. 10+00.00
-L- POC Sta. 15+00.00

-DRI- POT Sta. 11+35.18

-DRI- POT Sta. 10+00.00

-DR2- POT Sta. 10+00.00
-L- POC Sta. 20+00.00

-L- POC STA. 20+57.59 =
-BL-4 PINC STA. 16+34.06
(9.63' RT.)

-L- PT Sta. 20+79.68

-L- POT Sta. 23+75.53

END TIP PROJECT B-3857
-L- POT STA. 23+00.00

3
FRENCH BROAD PARTNERS
LIMITED LIABILITY COMPANY
D.B.865 PG.150

- NOTES:**
- 1) FOR -L-, -DRI-, AND -DR2- PROFILES SEE SHEET 5
 - 2) ALL DRIVEWAY RADII ARE 10' UNLESS NOTED OTHERWISE ON PLANS.
 - 3) EXISTING FILL MATERIAL TO BE REMOVED TO NATURAL GROUND (SEE X-SECTIONS)
 - 4) THE BRIDGE IS DESIGNED ON THE LONG CHORD TO THE CURVE SET BY STRUCTURE DESIGN (SEE STRUCTURE PLANS).
 - 5) FOR STRUCTURE PLANS SEE SHEETS S-1 THRU S-21

8/17/99