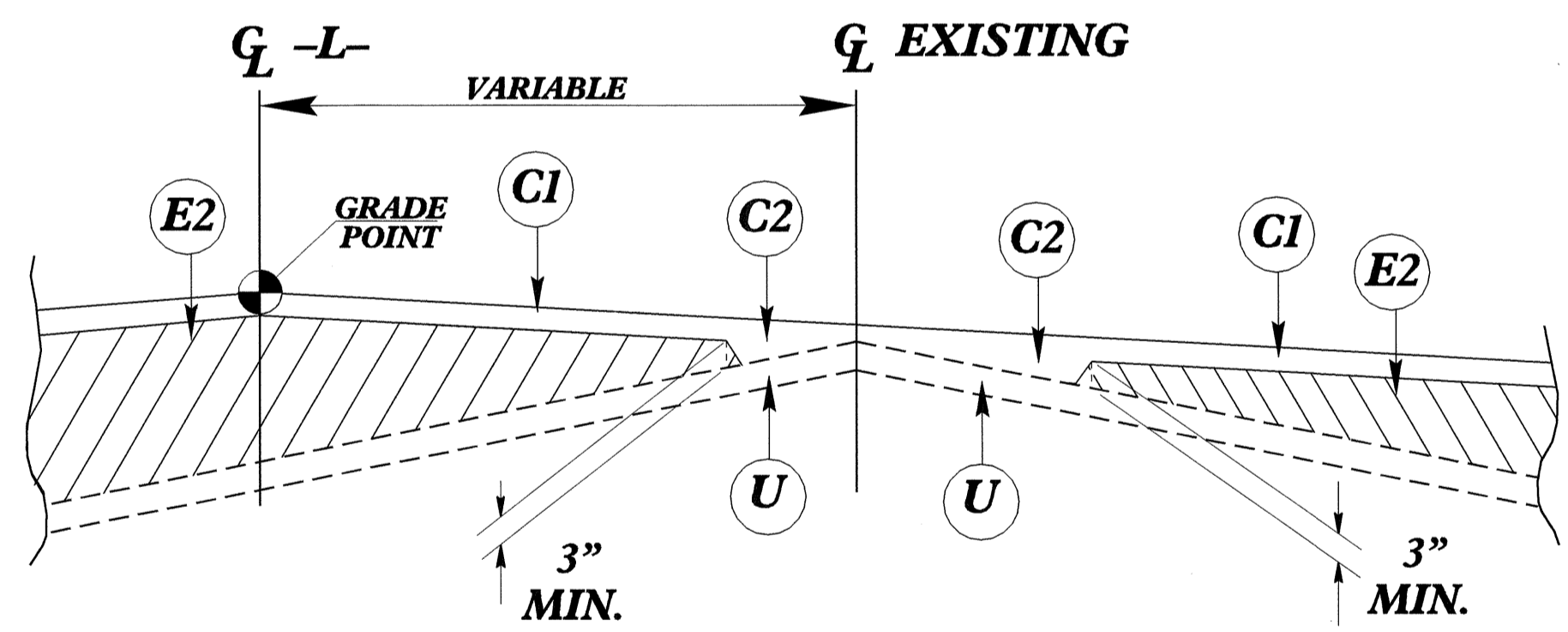
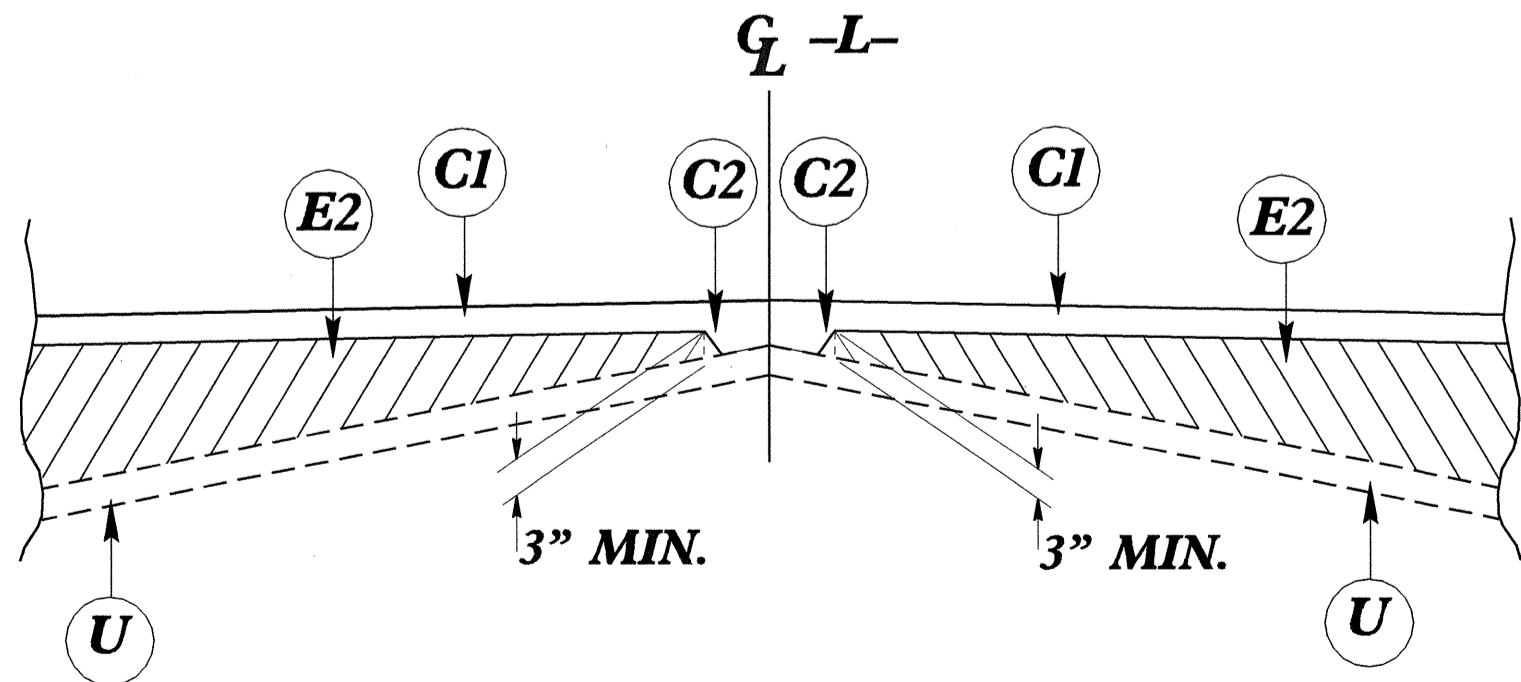


FINAL PAVEMENT SCHEDULE	
C1	PROP. APPROX. 2 1/2" ASPHALT CONCRETE SURFACE COURSE, TYPE SF9.5A, AT AN AVERAGE RATE OF 137.5 LBS. PER SQ. YD. IN EACH OF TWO LAYERS.
C2	PROP. VAR. DEPTH ASPHALT CONCRETE SURFACE COURSE, TYPE SF9.5A, AT AN AVERAGE RATE OF 110 LBS. PER SQ. YD. PER 1" DEPTH TO BE PLACED IN LAYERS NOT LESS THAN 1" IN DEPTH OR GREATER THAN 1 1/2" IN DEPTH.
E1	PROP. APPROX. 5 1/2" ASPHALT CONCRETE BASE COURSE, TYPE B25.0B, AT AN AVERAGE RATE OF 627 LBS. PER SQ. YD.
E2	PROP. VAR. DEPTH ASPHALT CONCRETE BASE COURSE, TYPE B25.0B, AT AN AVERAGE RATE OF 114 LBS. PER SQ. YD. PER 1" DEPTH TO BE PLACED IN LAYERS NOT LESS THAN 3" IN DEPTH OR GREATER THAN 5 1/2" IN DEPTH.
J	PROP. 6" AGGREGATE BASE COURSE.
T	EARTH MATERIAL.
U	EXISTING PAVEMENT.
W	VARIABLE DEPTH ASPHALT PAVEMENT (SEE STANDARD WEDGING DETAILS NO. 1 & NO. 2)

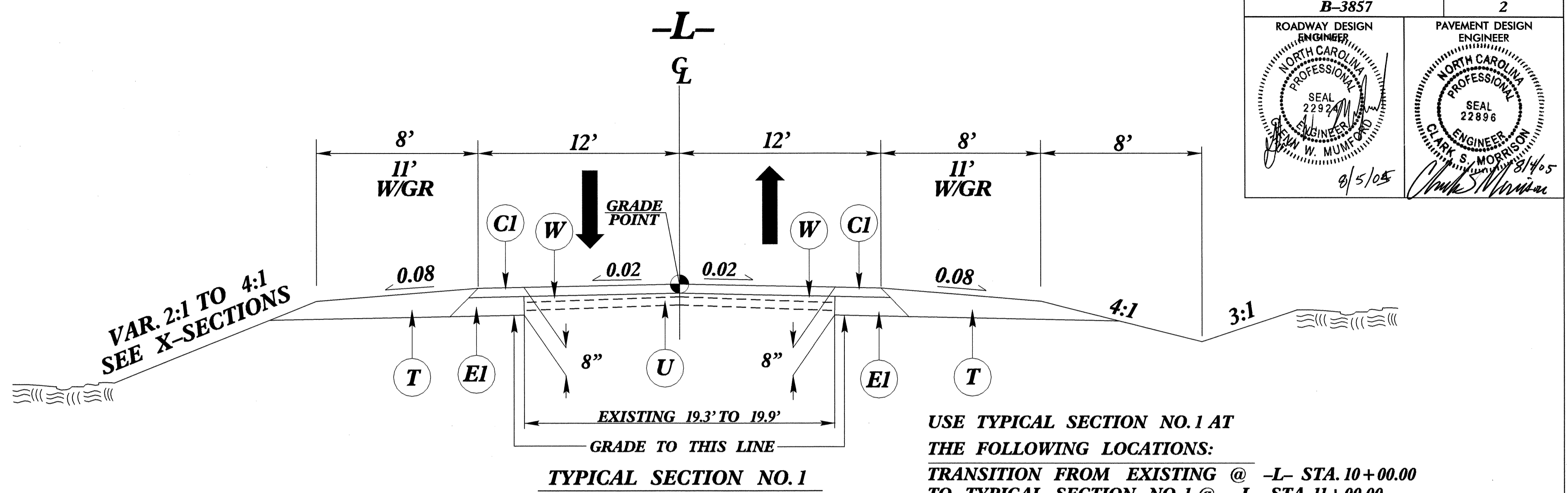
NOTE: PAVEMENT EDGE SLOPES ARE 1:1 UNLESS SHOWN OTHERWISE.



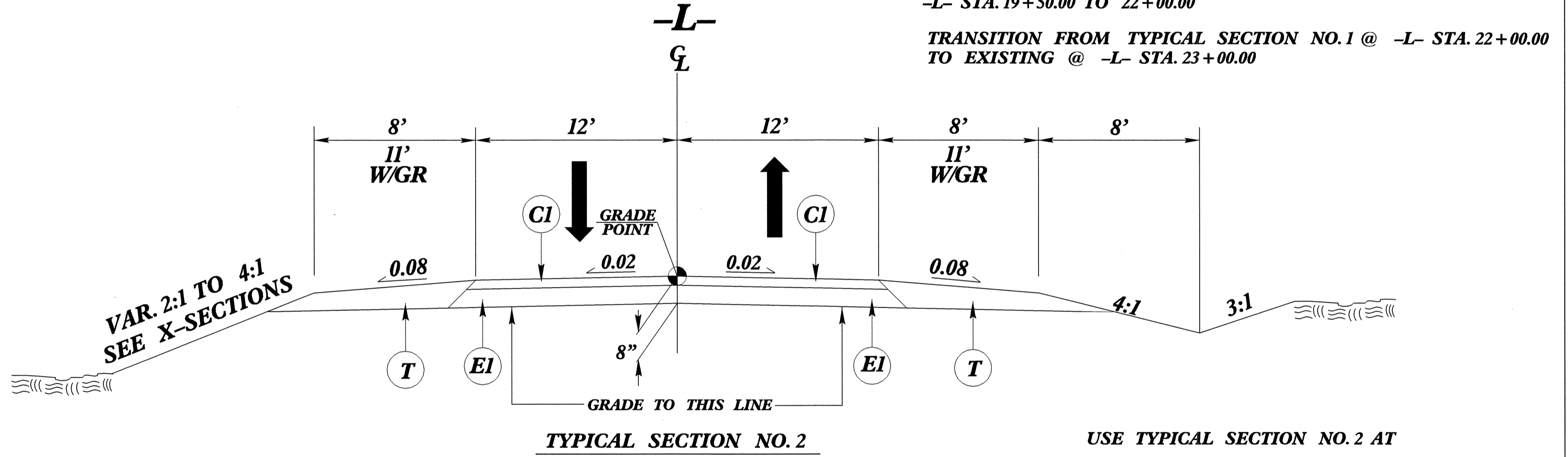
DETAIL SHOWING METHOD OF WEDGING NO.1
USE IN CONJUNCTION WITH TYPICAL SECTION NO.1



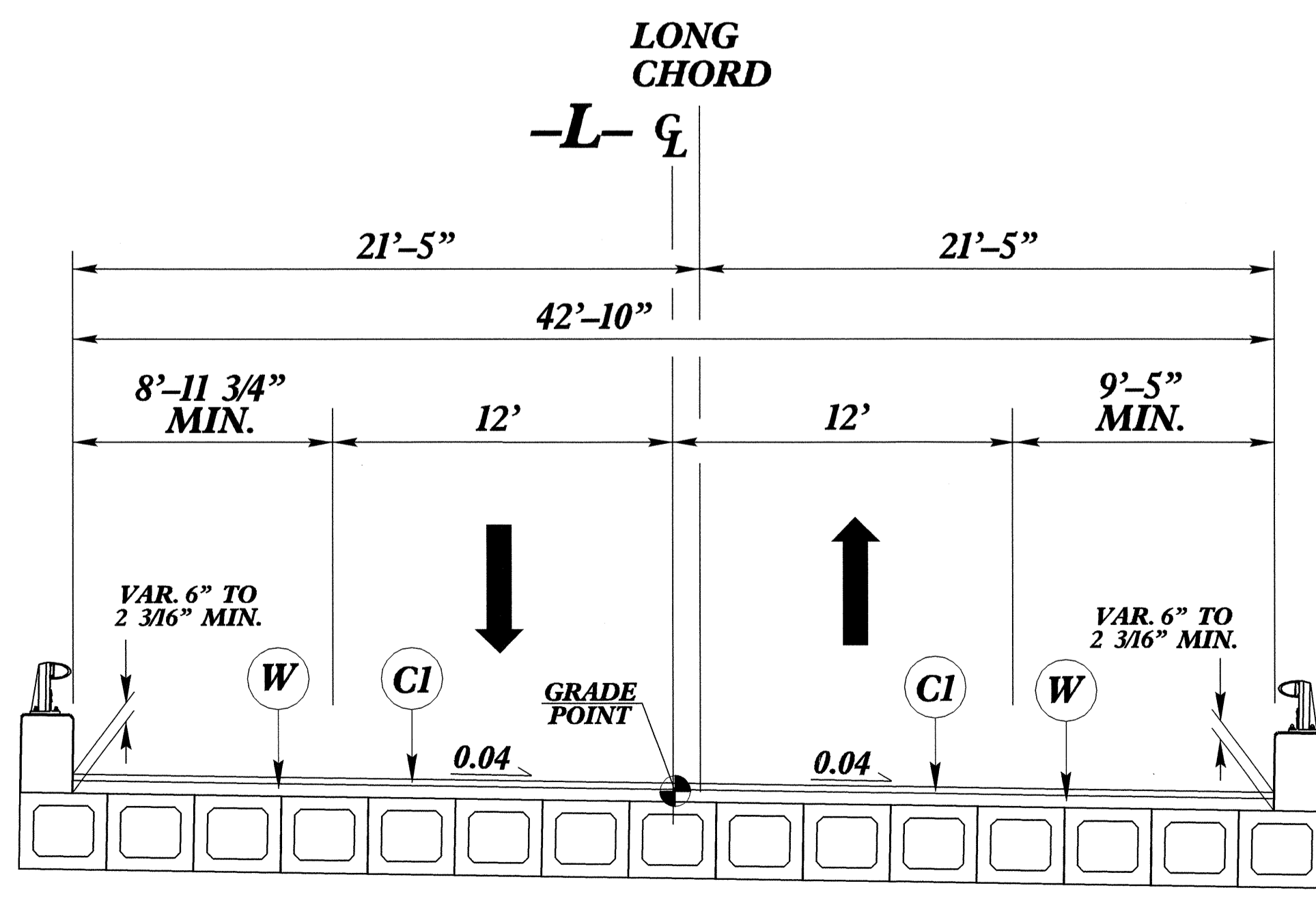
DETAIL SHOWING METHOD OF WEDGING NO.2
USE IN CONJUNCTION WITH TYPICAL SECTION NO.1



USE TYPICAL SECTION NO.1 AT THE FOLLOWING LOCATIONS:
 TRANSITION FROM EXISTING @ -L- STA. 10+00.00 TO TYPICAL SECTION NO.1 @ -L- STA. 11+00.00
 -L- STA. 11+00.00 TO 13+50.00
 -L- STA. 19+50.00 TO 22+00.00
 TRANSITION FROM TYPICAL SECTION NO.1 @ -L- STA. 22+00.00 TO EXISTING @ -L- STA. 23+00.00



USE TYPICAL SECTION NO.2 AT THE FOLLOWING LOCATIONS:
 -L- STA. 13+50.00 TO 16+14.00 (BEGIN BRIDGE)
 -L- STA. 17+04.00 (END BRIDGE) TO 19+50.00
 NOTE:
 25:1 P.S. TRANSITION AT BRIDGE
 50:1 SHOULDER TRANSITION AT BRIDGE



USE TYPICAL SECTION NO.3 AT THE FOLLOWING LOCATION:
 -L- STA. 16+14.00 (BEGIN BRIDGE) TO -L- STA. 17+04.00 (END BRIDGE)

TYPICAL SECTION NO.3
 BOX BEAM BRIDGE
 SEE STRUCTURE PLANS

6/2/99
04 AUG 2005 09:21 B3857.dwg
Roadway AT B3857.dwg
tup.dgn