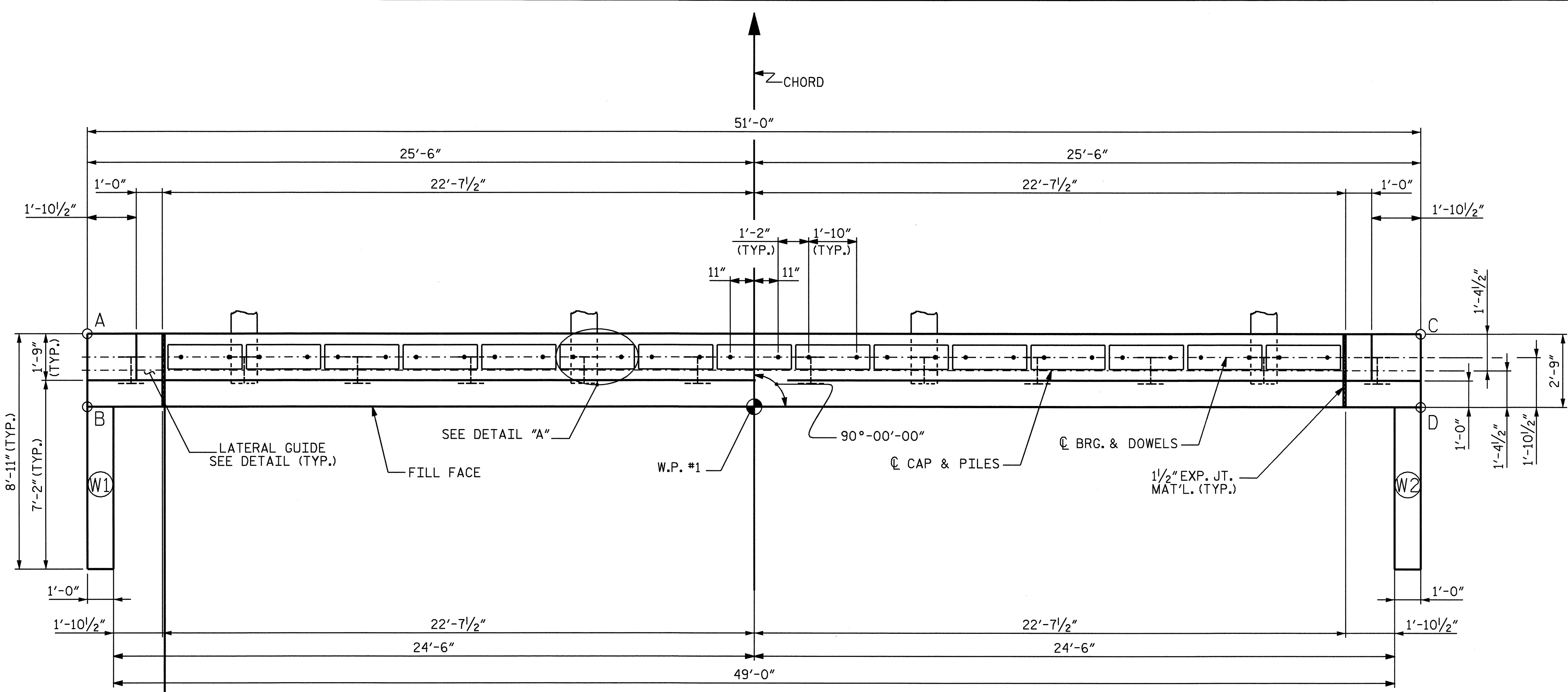


**NOTES**

STIRRUPS IN CAP MAY BE SHIFTED AS NECESSARY TO CLEAR DOWELS.

THE LATERAL GUIDE AT EACH END OF THE CAP IS NOT TO BE POURED UNTIL AFTER THE BOX BEAM UNITS ARE IN PLACE.

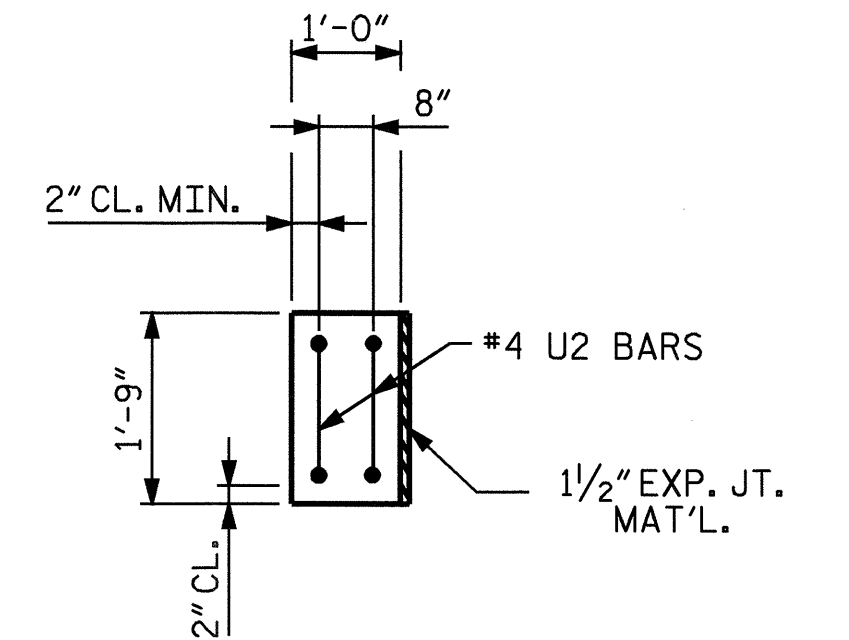
THE CONTRACTOR SHALL PROVIDE FOR INSTALLATION OF THE 4" DIAMETER DRAIN PIPE THROUGH THE WING WALL AS REQUIRED FOR REINFORCED BRIDGE APPROACH FILLS. SEE THE ROADWAY PLANS. REINFORCING STEEL IN THE WING WALL MAY BE SHIFTED AS NECESSARY TO CLEAR THE DRAIN PIPE.



**PLAN**

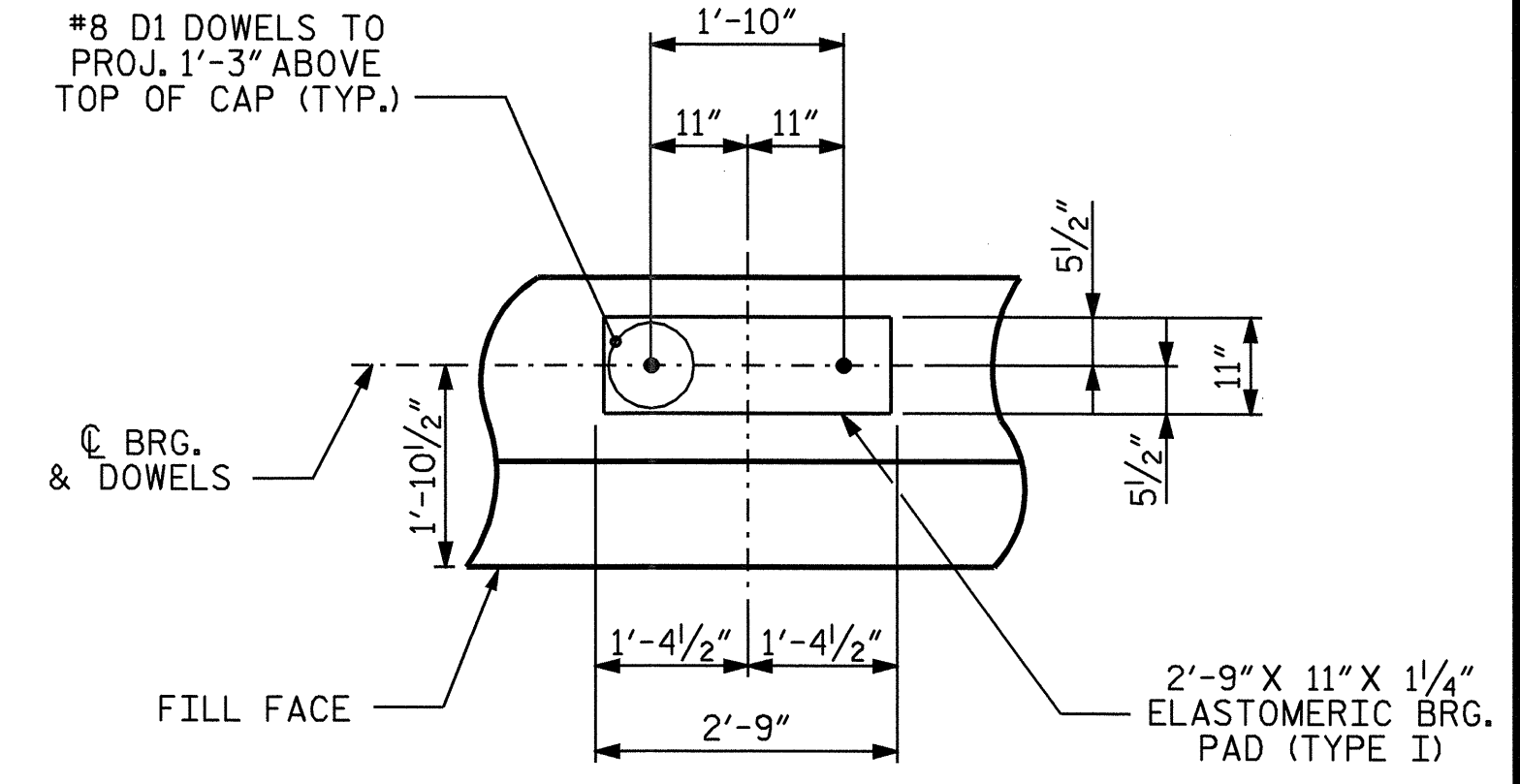
ELEVATIONS OF NOTED POINTS:

POINT A	= 2067.450
POINT B	= 2067.560
POINT C	= 2065.420
POINT D	= 2065.520

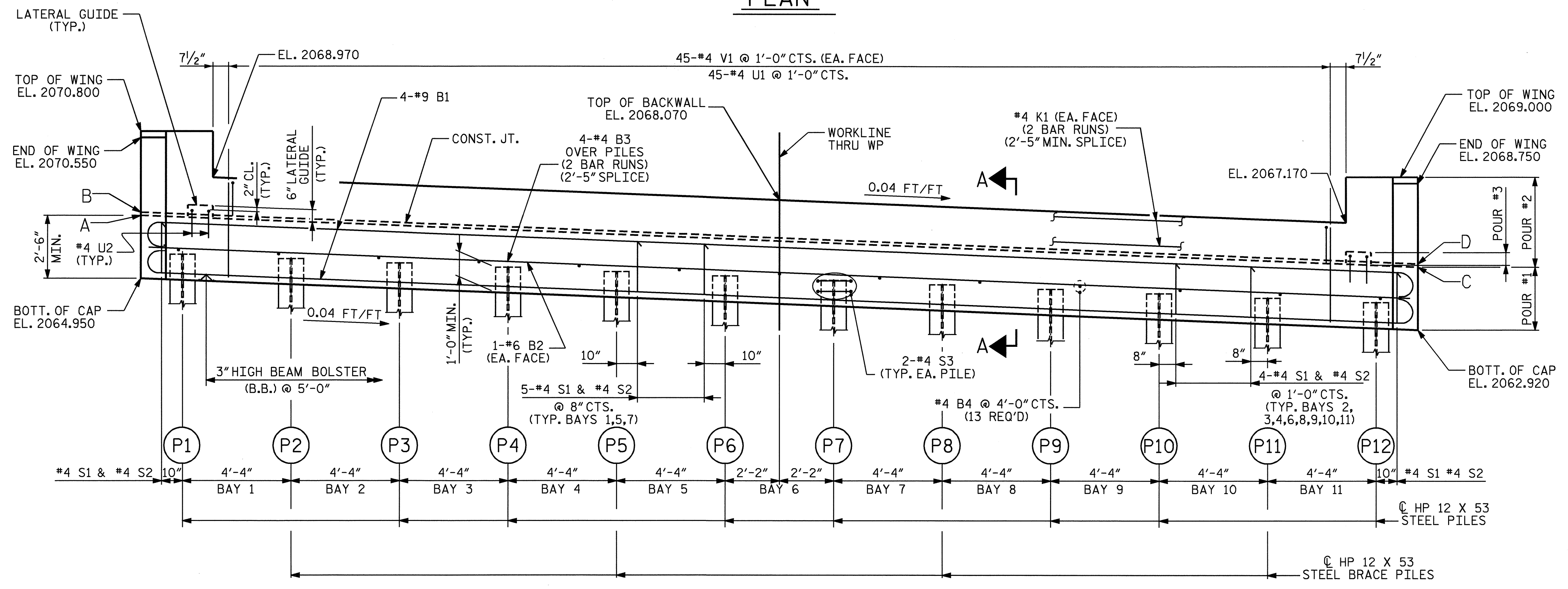


**LATERAL GUIDE**

#8 D1 DOWELS TO PROJ. 1'-3" ABOVE TOP OF CAP (TYP.)



**DETAIL "A"**



**ELEVATION**

TOP OF PILE ELEVATIONS FOR END BENT #1

PILE	ELEVATION
P1	2065.903
P2	2065.730
P3	2065.557
P4	2065.383
P5	2065.210
P6	2065.037
P7	2064.863
P8	2064.690
P9	2064.517
P10	2064.343
P11	2064.170
P12	2063.997

PROJECT NO. B-3857  
HENDERSON COUNTY  
 STATION: 16+59.00 -L-

SHEET 1 OF 3

STATE OF NORTH CAROLINA  
 DEPARTMENT OF TRANSPORTATION  
 RALEIGH

**SUBSTRUCTURE  
 END BENT NO. 1**

REVISIONS						SHEET NO.
NO.	BY:	DATE:	NO.	BY:	DATE:	5-12
1			3			TOTAL SHEETS
2			4			20



DRAWN BY: A. SORSENGIN DATE: 4-29-05  
 CHECKED BY: L.L. MURPHY DATE: 07-05