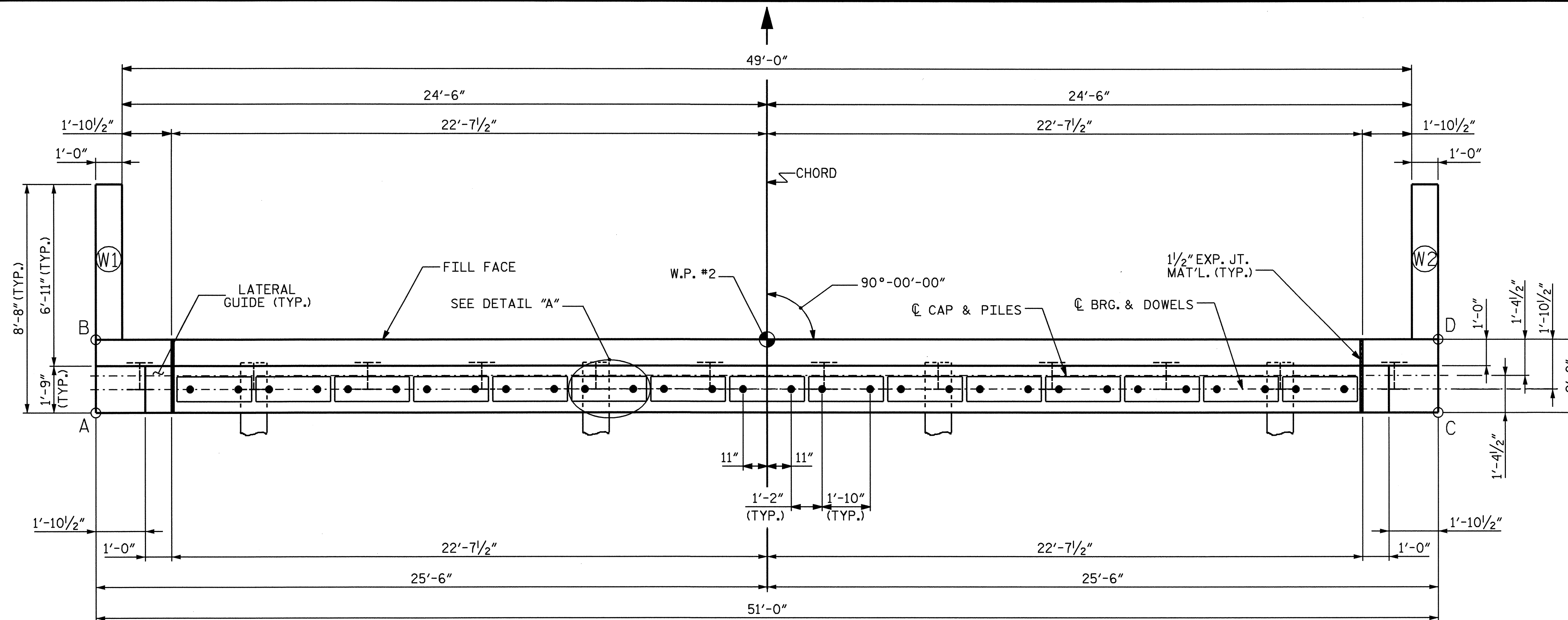


NOTES

STIRRUPS IN CAP MAY BE SHIFTED AS NECESSARY TO CLEAR DOWELS.

THE LATERAL GUIDE AT EACH END OF THE CAP IS NOT TO BE POURED UNTIL AFTER THE BOX BEAM UNITS ARE IN PLACE.

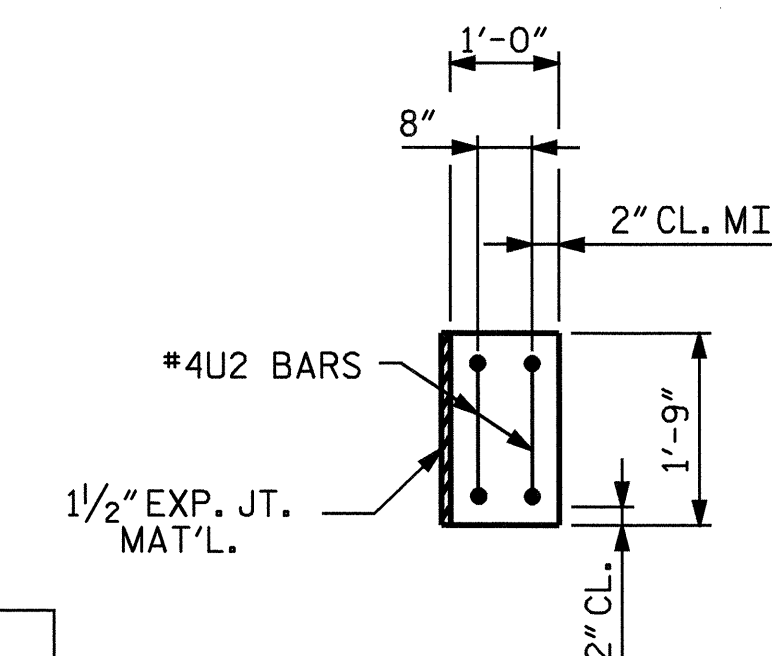
THE CONTRACTOR SHALL PROVIDE FOR INSTALLATION OF THE 4" DIAMETER DRAIN PIPE THROUGH THE WING WALL AS REQUIRED FOR REINFORCED BRIDGE APPROACH FILLS, SEE THE ROADWAY PLANS. REINFORCING STEEL IN THE WING WALL MAY BE SHIFTED AS NECESSARY TO CLEAR THE DRAIN PIPE.



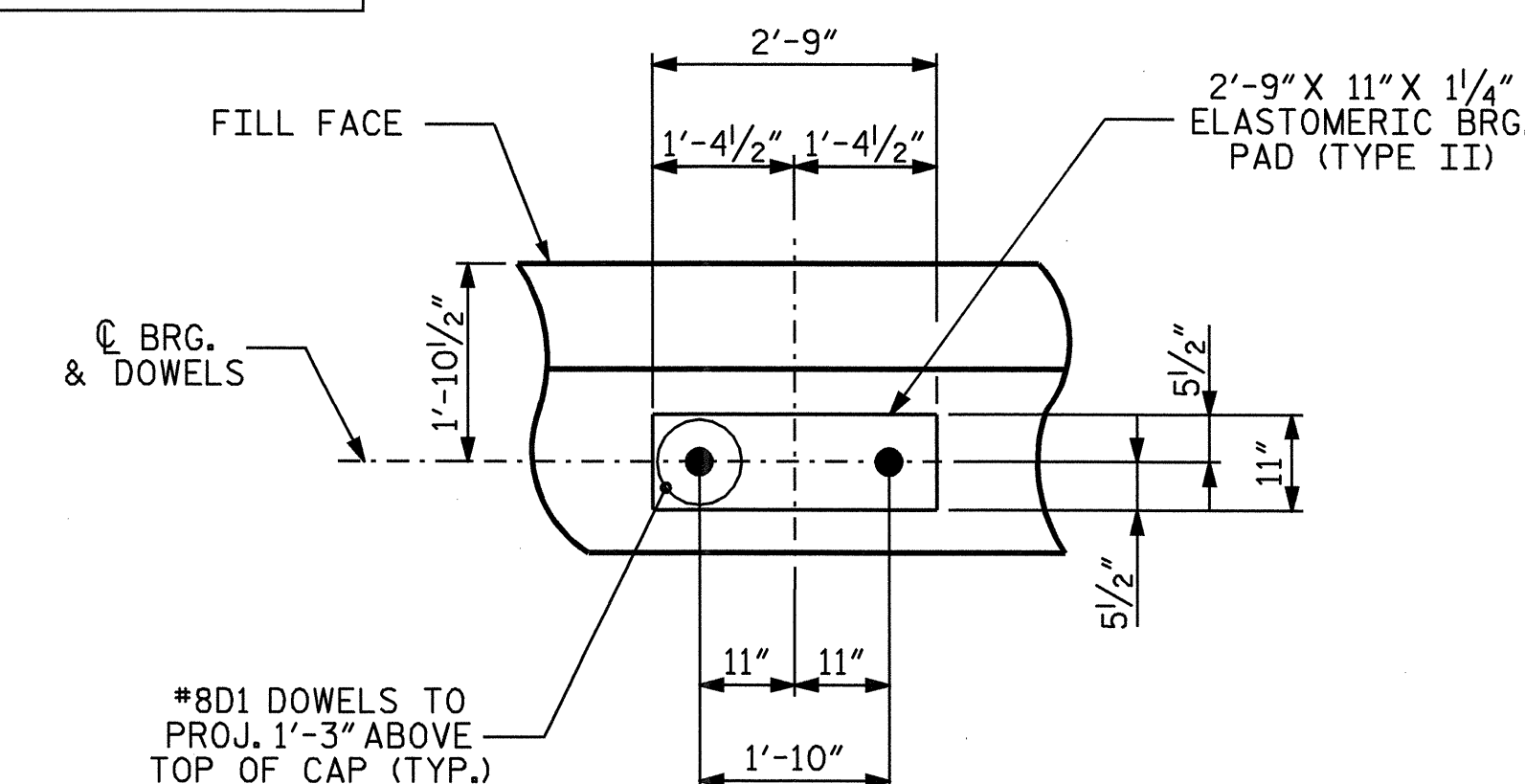
PLAN

ELEVATIONS OF NOTED POINTS:

POINT A	= 2064.352
POINT B	= 2064.233
POINT C	= 2062.312
POINT D	= 2062.193



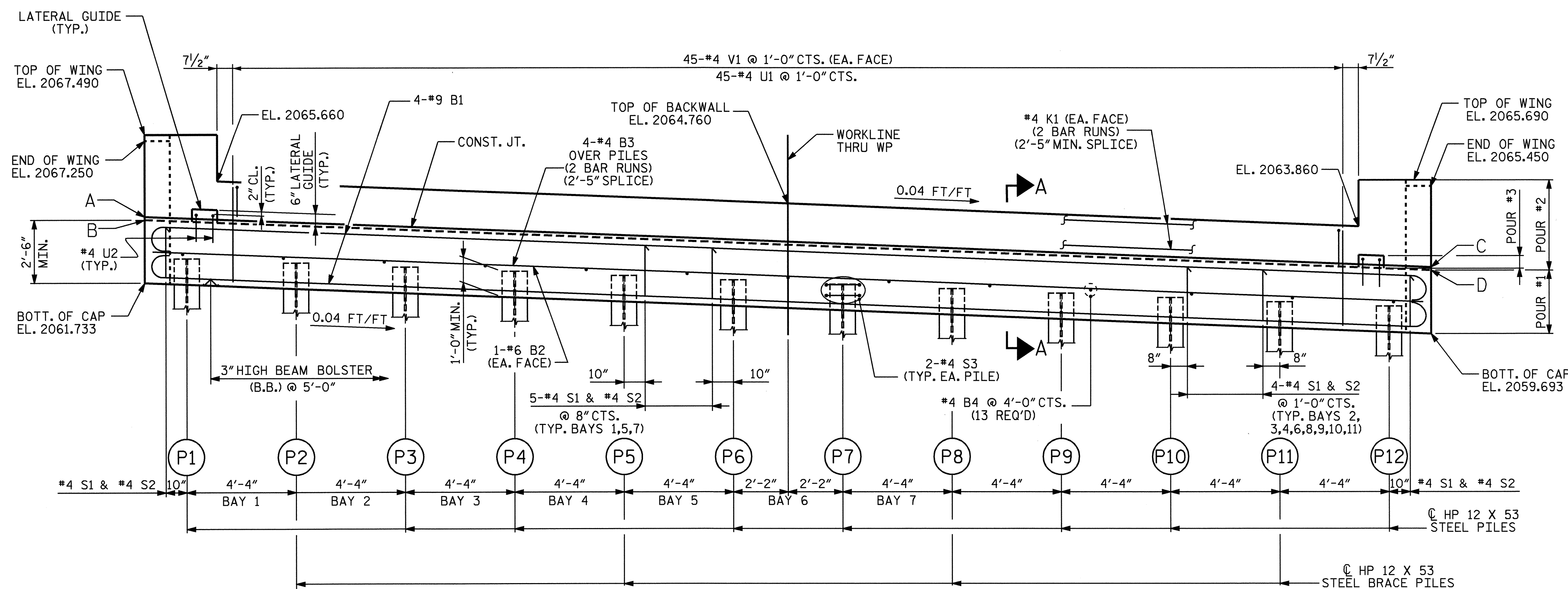
LATERAL GUIDE



DETAIL "A"

TOP OF PILE ELEVATIONS FOR END BENT #2

PILE	ELEVATION
P1	2062.686
P2	2062.513
P3	2062.340
P4	2062.166
P5	2061.993
P6	2061.820
P7	2061.646
P8	2061.473
P9	2061.300
P10	2061.126
P11	2060.953
P12	2060.780



ELEVATION

PROJECT NO. B-3857
HENDERSON COUNTY
 STATION: 16+59.00 -L-

SHEET 1 OF 3

STATE OF NORTH CAROLINA
 DEPARTMENT OF TRANSPORTATION
 RALEIGH

**SUBSTRUCTURE
 END BENT NO. 2**



DRAWN BY: A. SORSENGINH DATE: 4-29-05
 CHECKED BY: L.L. MURPHY DATE: 07-05

14-SEP-2005 08:55
 R:\STRUCTURE\B3857\ASORSE\B3857_02.DGN
 dahodge

REVISIONS						SHEET NO.
NO.	BY:	DATE:	NO.	BY:	DATE:	S-15
1			3			TOTAL SHEETS 20
2			4			