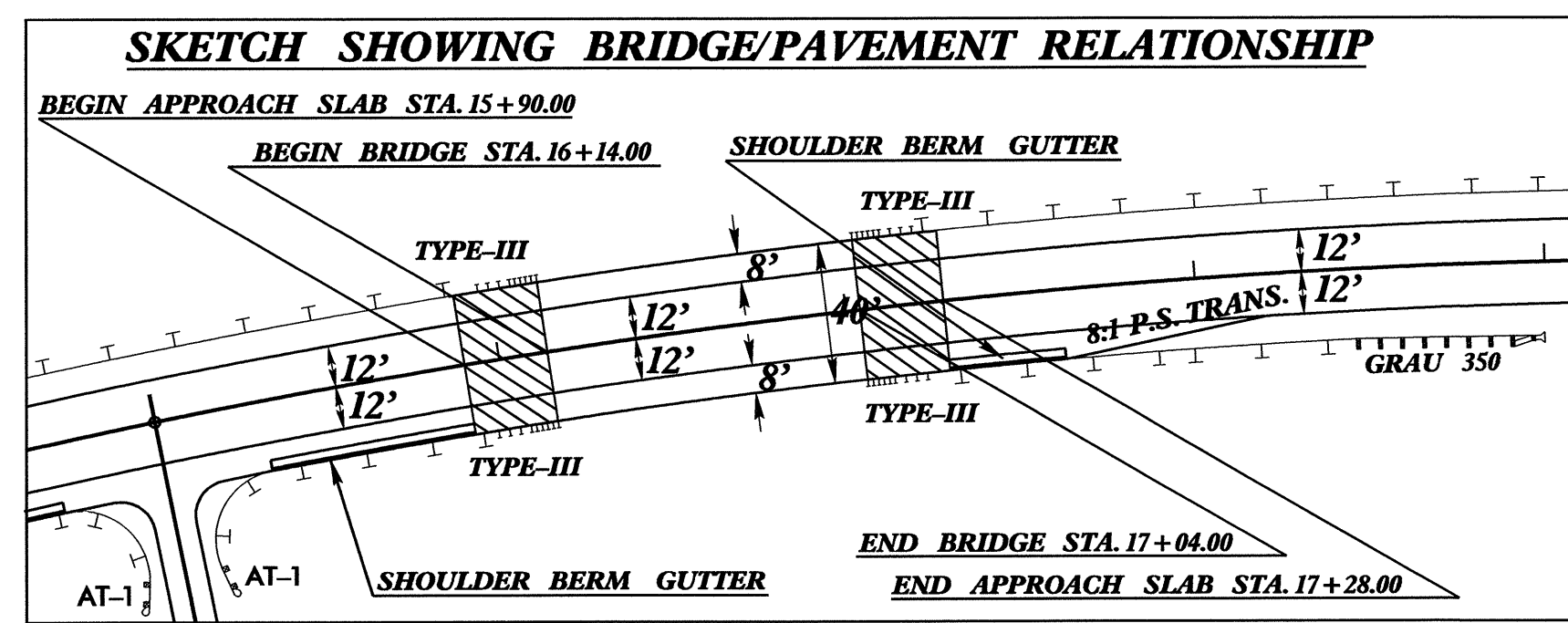
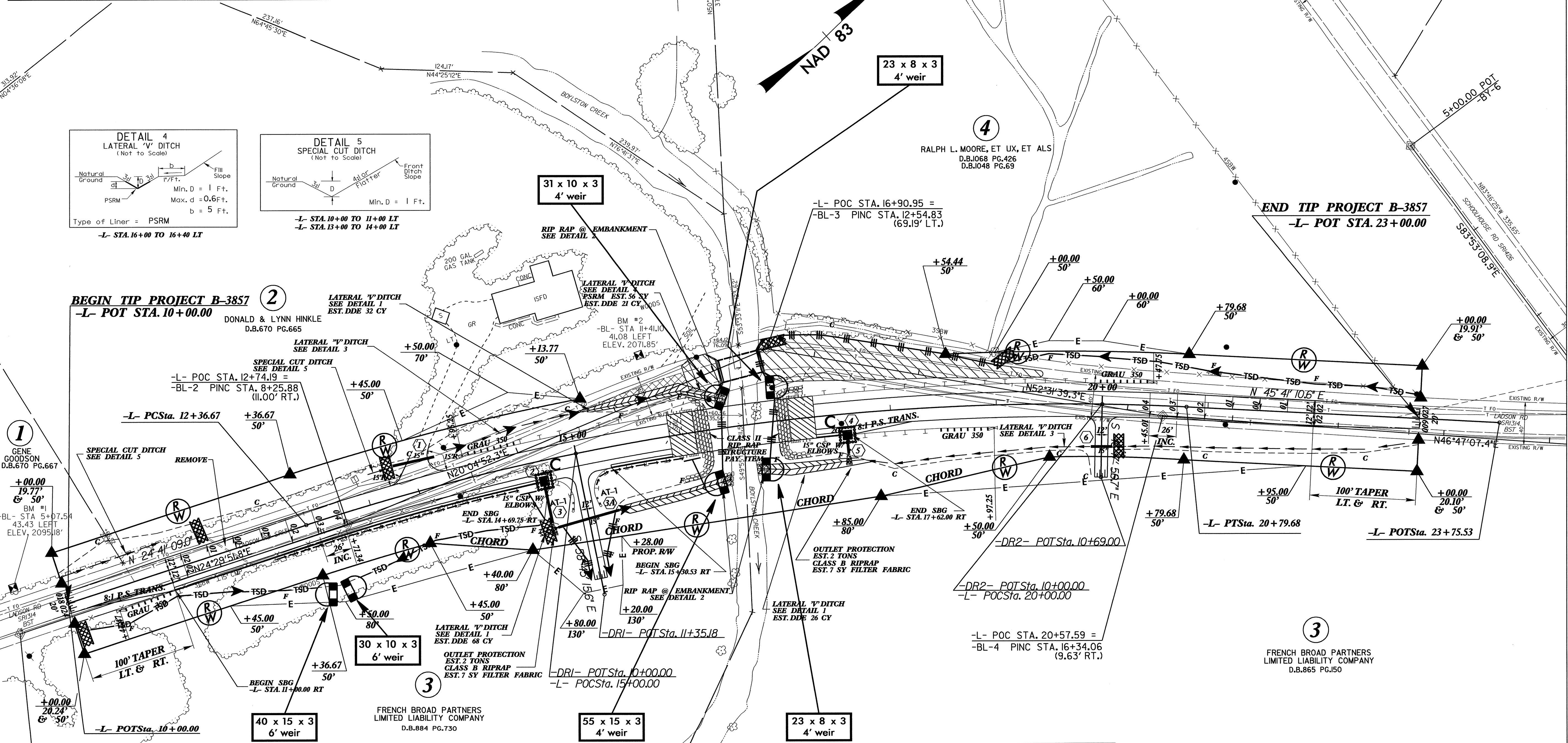
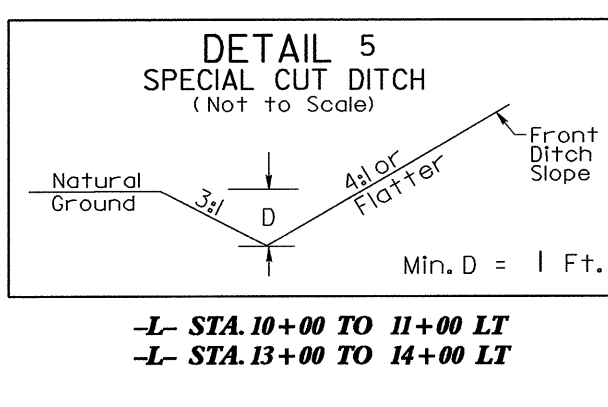
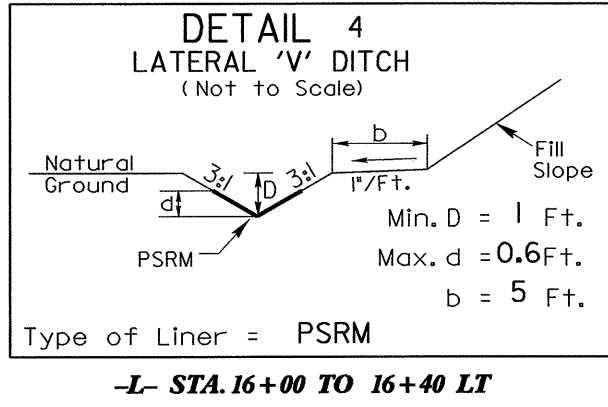


PROJECT REFERENCE NO.	SHEET NO.
B-3857	EC-5/CONST.4
RW SHEET NO.	
ROADWAY DESIGN ENGINEER	HYDRAULICS ENGINEER



NOTE: UTILIZE TEMPORARY ROCK SEDIMENT DAM TYPE - B AS STILLING BASIN WHERE APPLICABLE.



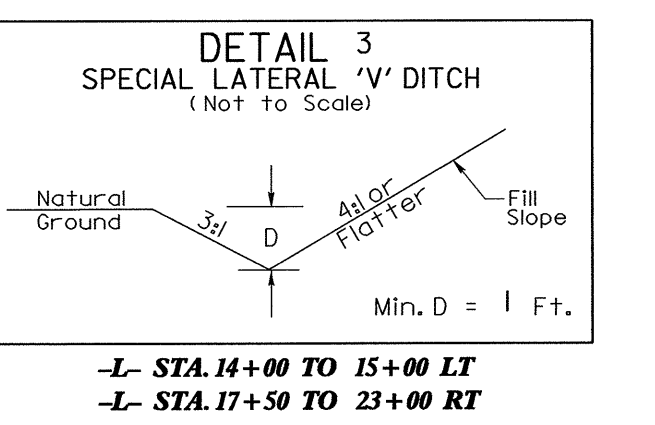
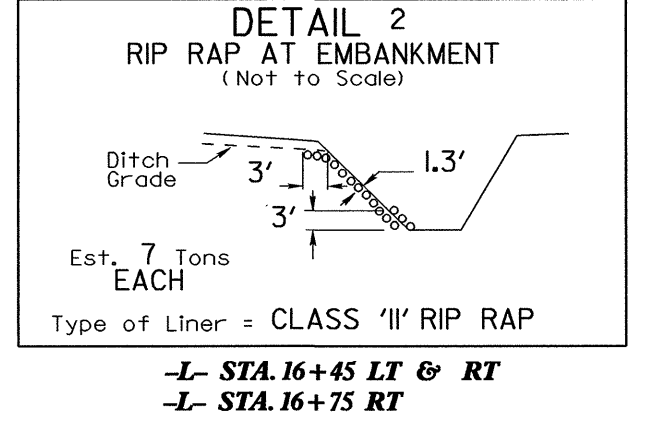
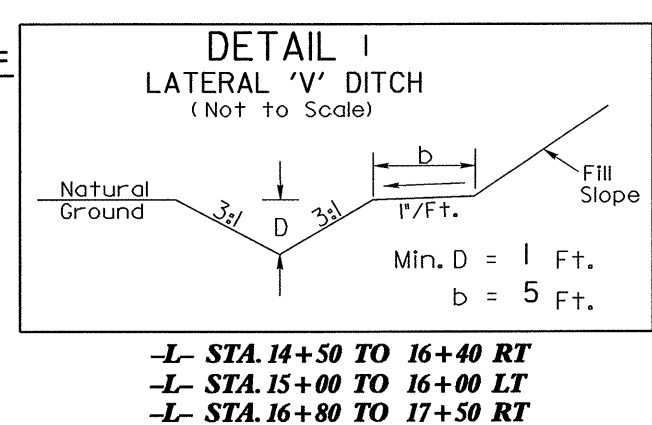
1 GENE GOODSON
D.B.670 PG.667
BM #1
BL- STA 5+07.54
43.43 LEFT
ELEV. 2095.18'

2 DONALD & LYNN HINKLE
D.B.670 PG.665
BM #2
BL- STA 11+41.10
41.08 LEFT
ELEV. 2071.85'

3 FRENCH BROAD PARTNERS
LIMITED LIABILITY COMPANY
D.B.884 PG.730

4 RALPH L. MOORE, ET UX, ET ALS
D.B.1068 PG.426
D.B.1048 PG.69

3 FRENCH BROAD PARTNERS
LIMITED LIABILITY COMPANY
D.B.865 PG.150



-L-
P/ Sta 16+62.96
Δ = 2' 00" 01.6" (RT)
D = 2' 29" 28.0"
T = 426.29'
L = 843.01'
R = 2,300.00'
SE = .04
RO = 104

- NOTES:
- FOR -L-, -DRI-, AND -DR2- PROFILES SEE SHEET 5
 - ALL DRIVEWAY RADII ARE 10' UNLESS NOTED OTHERWISE.
 - EXISTING FILL MATERIAL TO BE REMOVED TO NATURAL GROUND (SEE X-SECTIONS)
 - FOR STRUCTURE PLANS SEE SHEETS S-1 THRU S-21