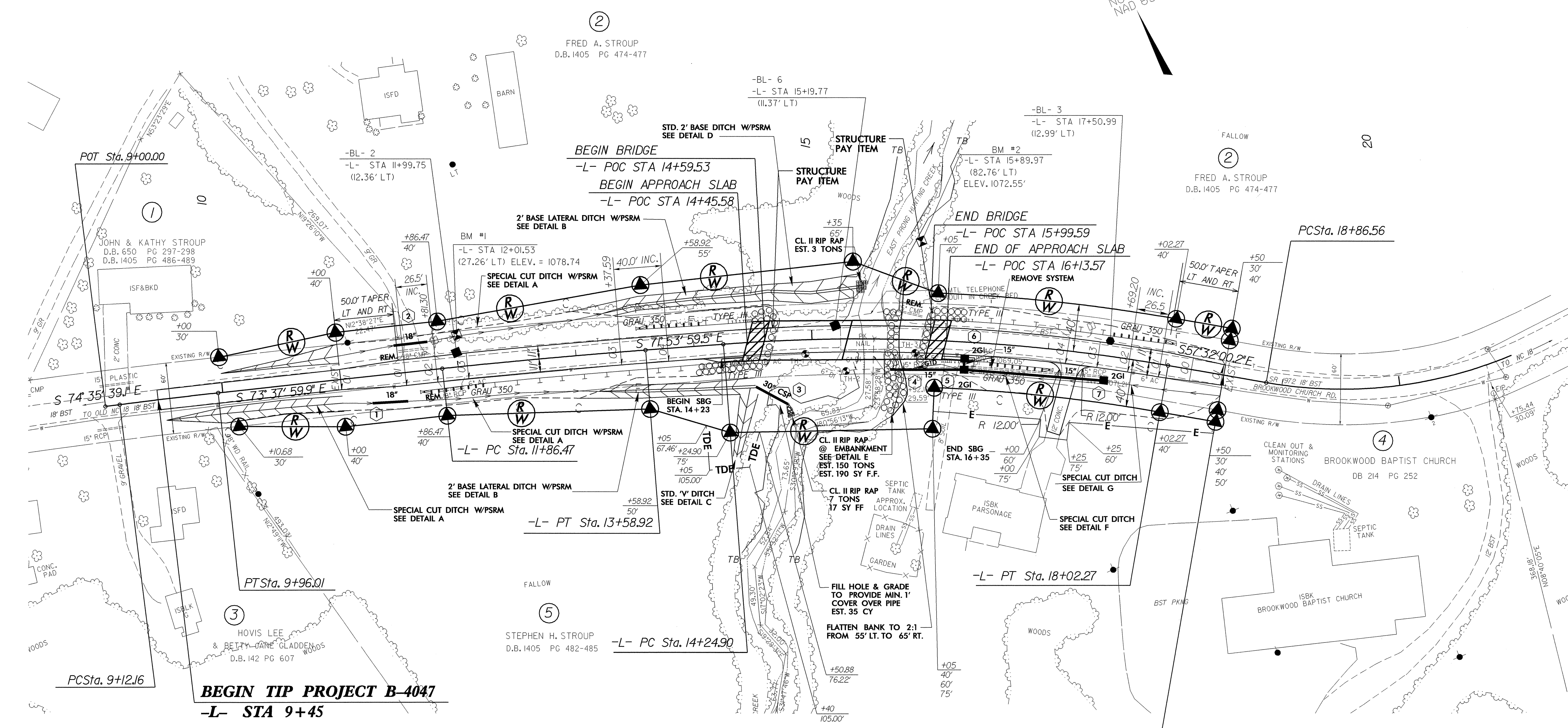
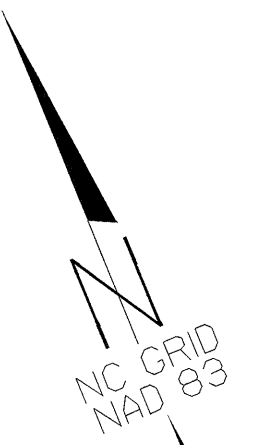
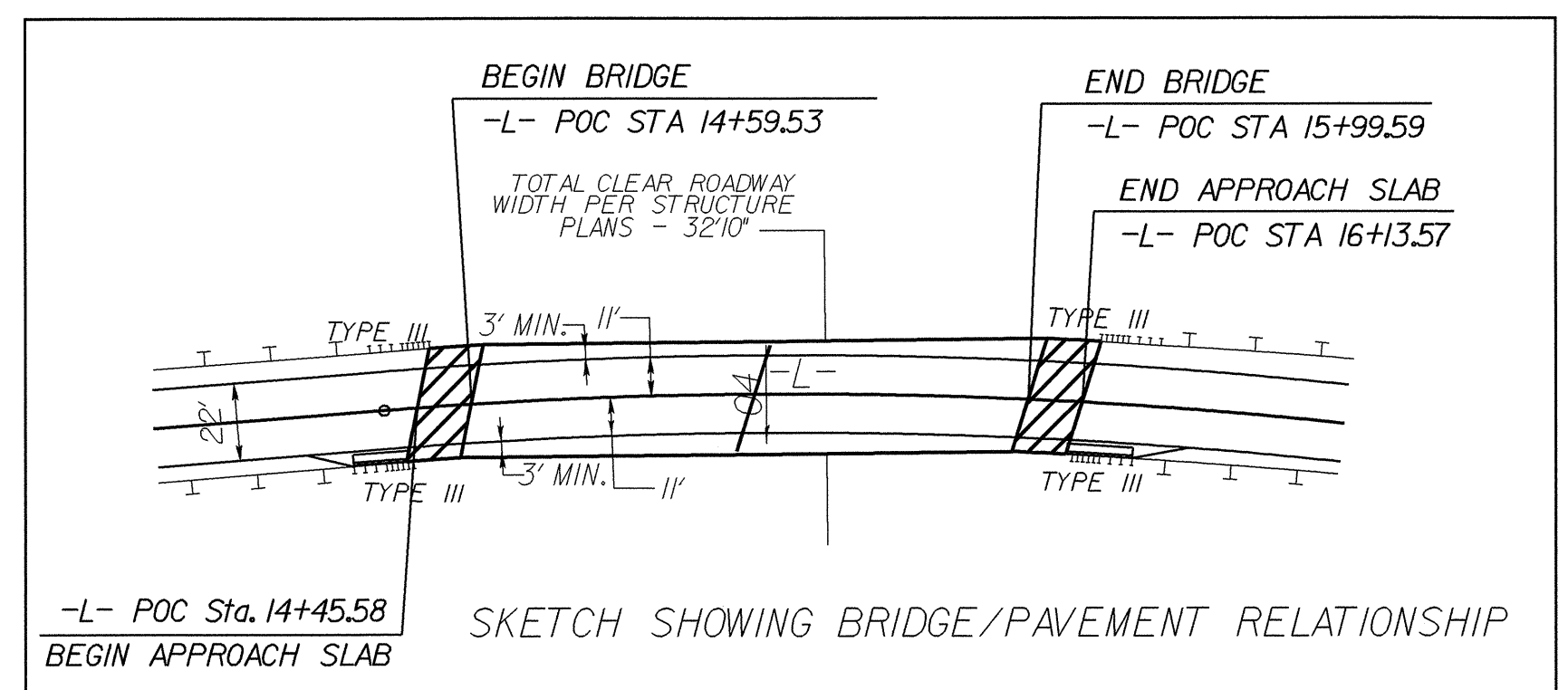


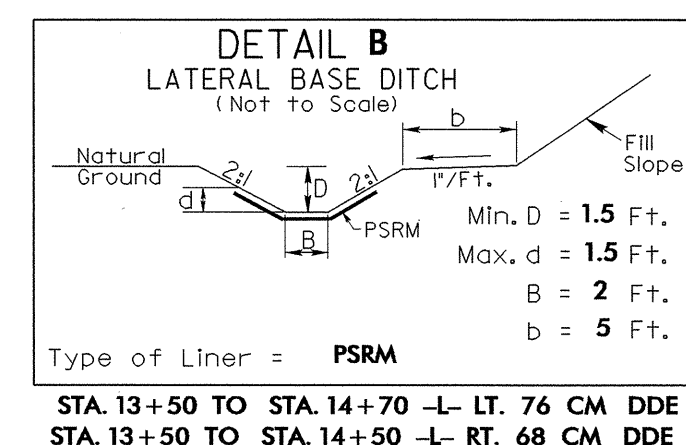
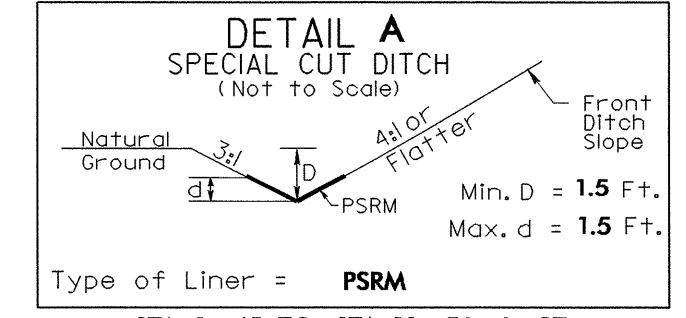
PI Sta 9+54.09 Δ = 0° 57' 39.2" (RT) D = 1' 08' 45.3" L = 83.85' T = 41.93' R = 5,000.00'	PI Sta 12+72.70 Δ = 1° 44' 00.4" (RT) D = 1' 00' 18.7" L = 172.45' T = 86.23' R = 5,700.00' e = SEE PLAN	PI Sta 16+14.58 Δ = 14° 21' 59.3" (RT) D = 3' 48' 25.3" L = 377.37' T = 189.68' R = 1,505.00' e = SEE PLAN	PI Sta 20+19.28 Δ = 39° 27' 59.5" (LT) D = 15' 29' 07.2" L = 254.86' T = 132.72' R = 370.00'
--	--	--	---



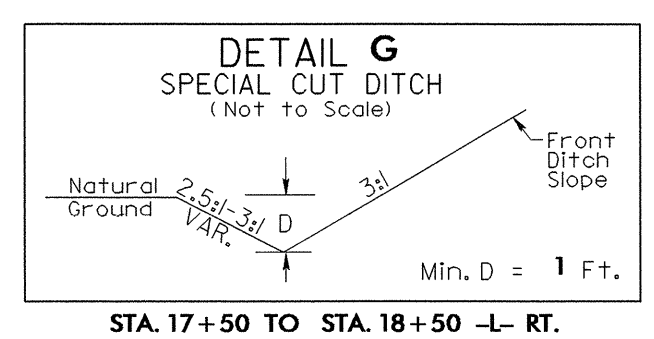
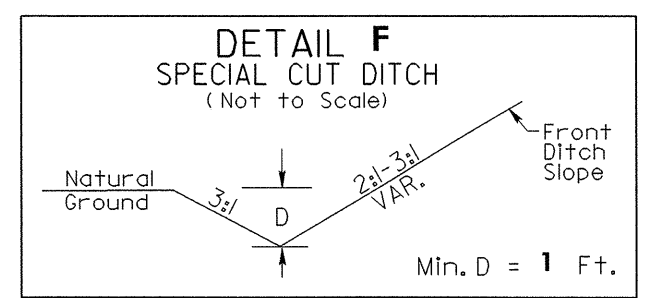
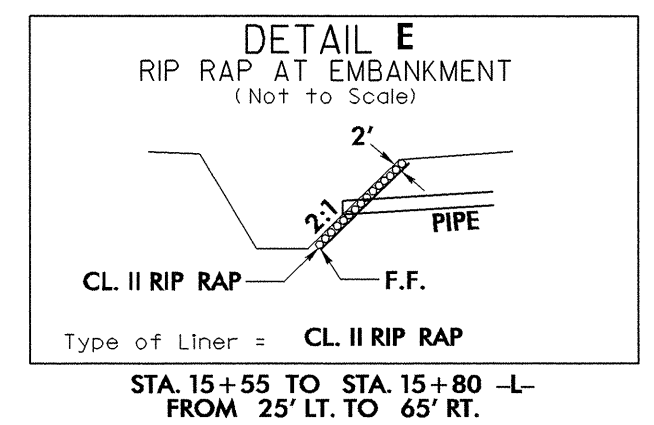
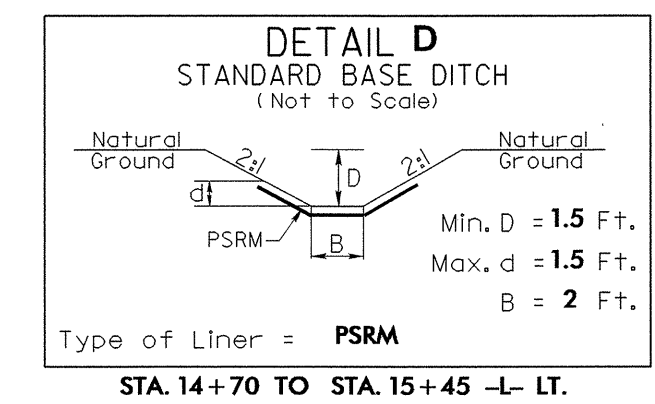
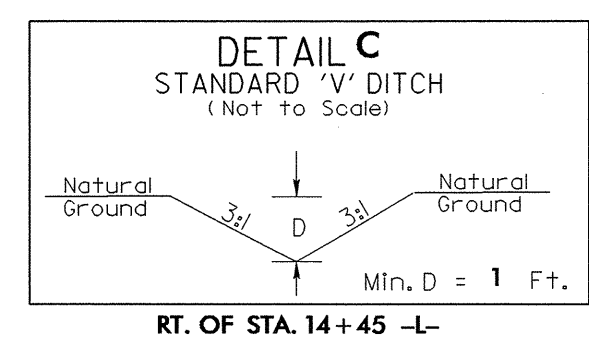
REVISIONS



NOTE : SEE SHEET 5 FOR -L- PROFILE
SEE SHEETS S-1 TO S-24 FOR STRUCTURE DESIGN



NOTE: EXTEND SBG FROM STA. 14+23 -L- RT. TO BEGIN BRIDGE RT. AND FROM END BRIDGE RT. TO STA. 16+35 -L- RT.



22-JUL-2005 09:40
f:\projects\B4047_rdy_psh-4.dgn
P:\B4047\B4047.dwg