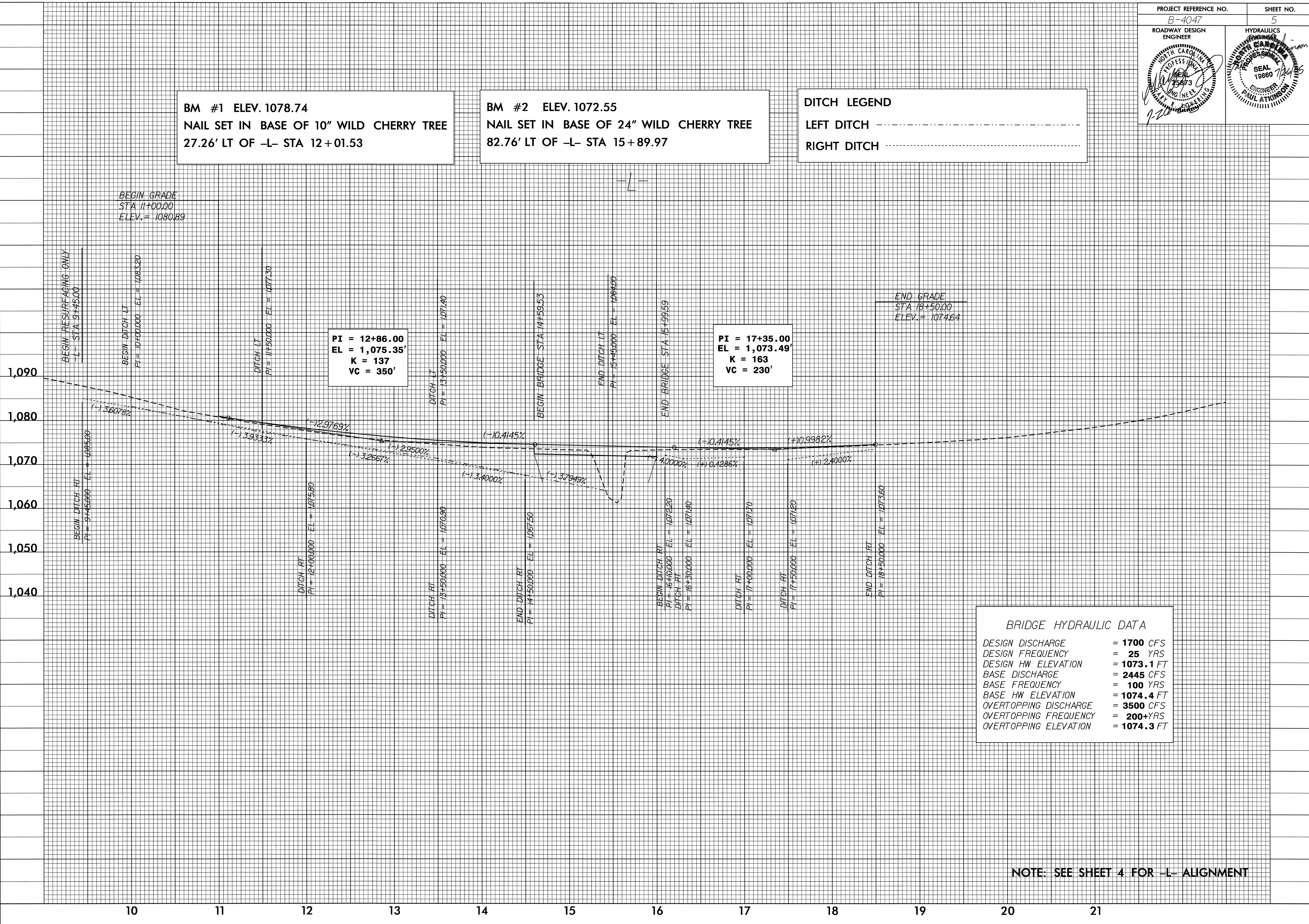


BM #1 ELEV. 1078.74  
NAIL SET IN BASE OF 10" WILD CHERRY TREE  
27.26' LT OF -L- STA 12 + 01.53

BM #2 ELEV. 1072.55  
NAIL SET IN BASE OF 24" WILD CHERRY TREE  
82.76' LT OF -L- STA 15 + 89.97

DITCH LEGEND  
LEFT DITCH - - - - -  
RIGHT DITCH - . . . . .



PI = 12+86.00  
EL = 1,075.35'  
K = 137  
VC = 350'

PI = 17+35.00  
EL = 1,073.49'  
K = 163  
VC = 230'

BRIDGE HYDRAULIC DATA

DESIGN DISCHARGE	= 1700 CFS
DESIGN FREQUENCY	= 25 YRS
DESIGN HW ELEVATION	= 1073.1 FT
BASE DISCHARGE	= 2445 CFS
BASE FREQUENCY	= 100 YRS
BASE HW ELEVATION	= 1074.4 FT
OVERTOPPING DISCHARGE	= 3500 CFS
OVERTOPPING FREQUENCY	= 200+YRS
OVERTOPPING ELEVATION	= 1074.3 FT

NOTE: SEE SHEET 4 FOR -L- ALIGNMENT

5/14/99  
22-JUL-2005 09:10  
f:\projects\B-4047\_rdy\_pf1.dgn