

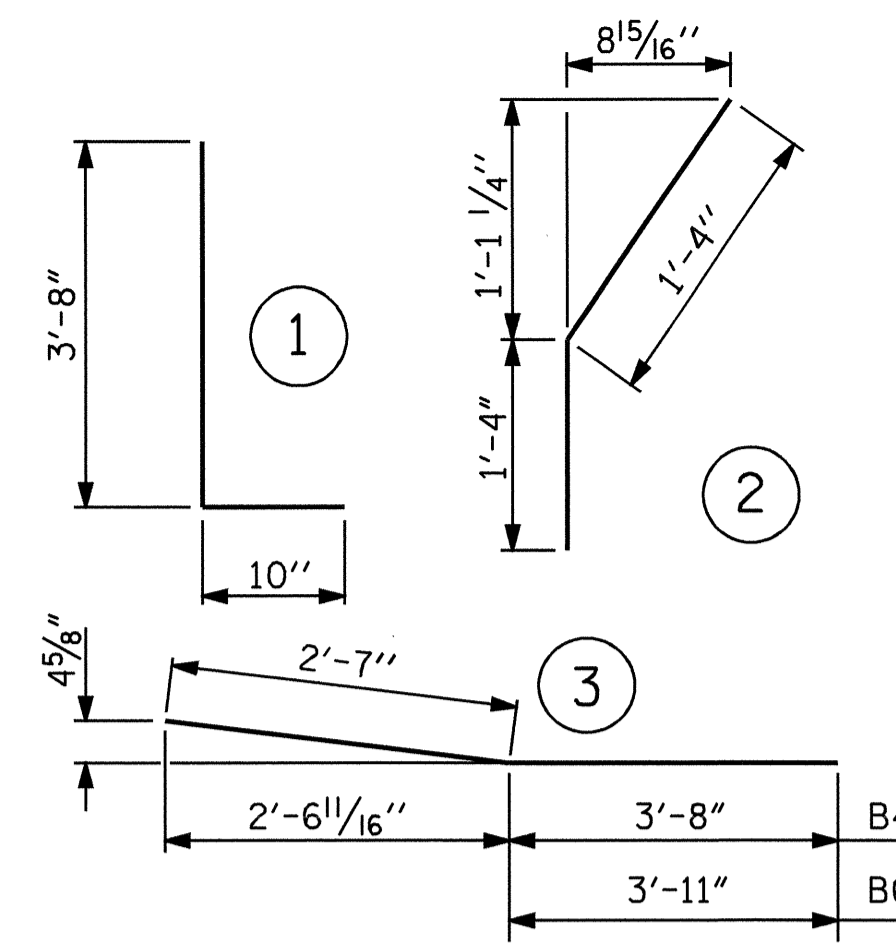
**BILL OF MATERIAL FOR ONE APPROACH SLAB (2 REQ'D)**

BAR	NO.	SIZE	TYPE	LENGTH	WEIGHT
*A1	30	#4	STR	19'-8"	394
A2	30	#4	STR	19'-5"	389
*B1	72	#5	STR	14'-0"	1051
B2	72	#6	STR	14'-7"	1577
*B3	7	#5	STR	11'-8"	85
*B4	1	#5	3	6'-3"	7
*B5	7	#5	STR	11'-6"	84
*B6	1	#5	3	6'-6"	7
*S1	48	#5	STR	3'-8"	184
*S2	48	#5	1	4'-6"	225
*S3	20	#5	2	2'-8"	56

REINFORCING STEEL = 1966 LBS  
 \*EPOXY COATED REINF. STEEL = 2093 LBS

CLASS AA CONCRETE BREAKDOWN :  
 POUR #1 (SLAB & CURB) 20.6 C.Y.  
 POUR #2 (RAIL) 2.7 C.Y.  
 TOTAL 23.3 C.Y.

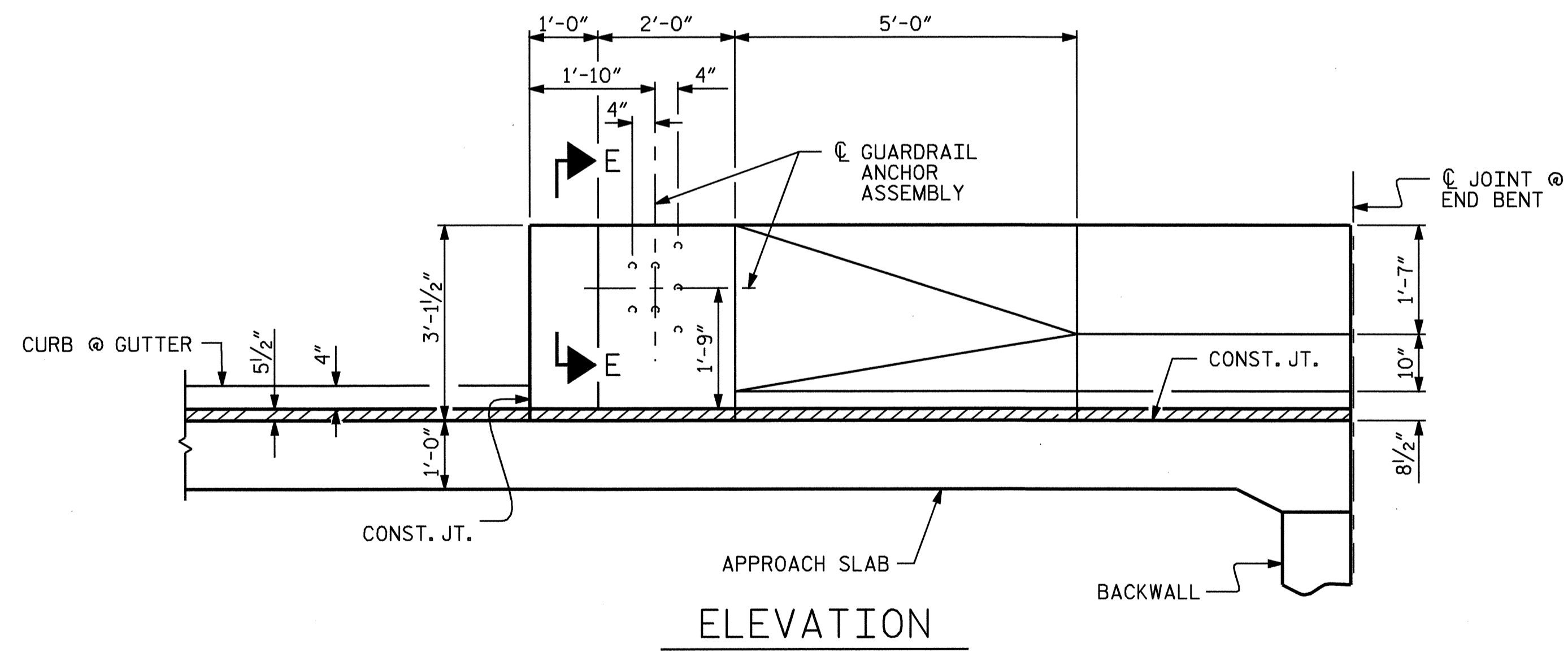
**BAR TYPES**



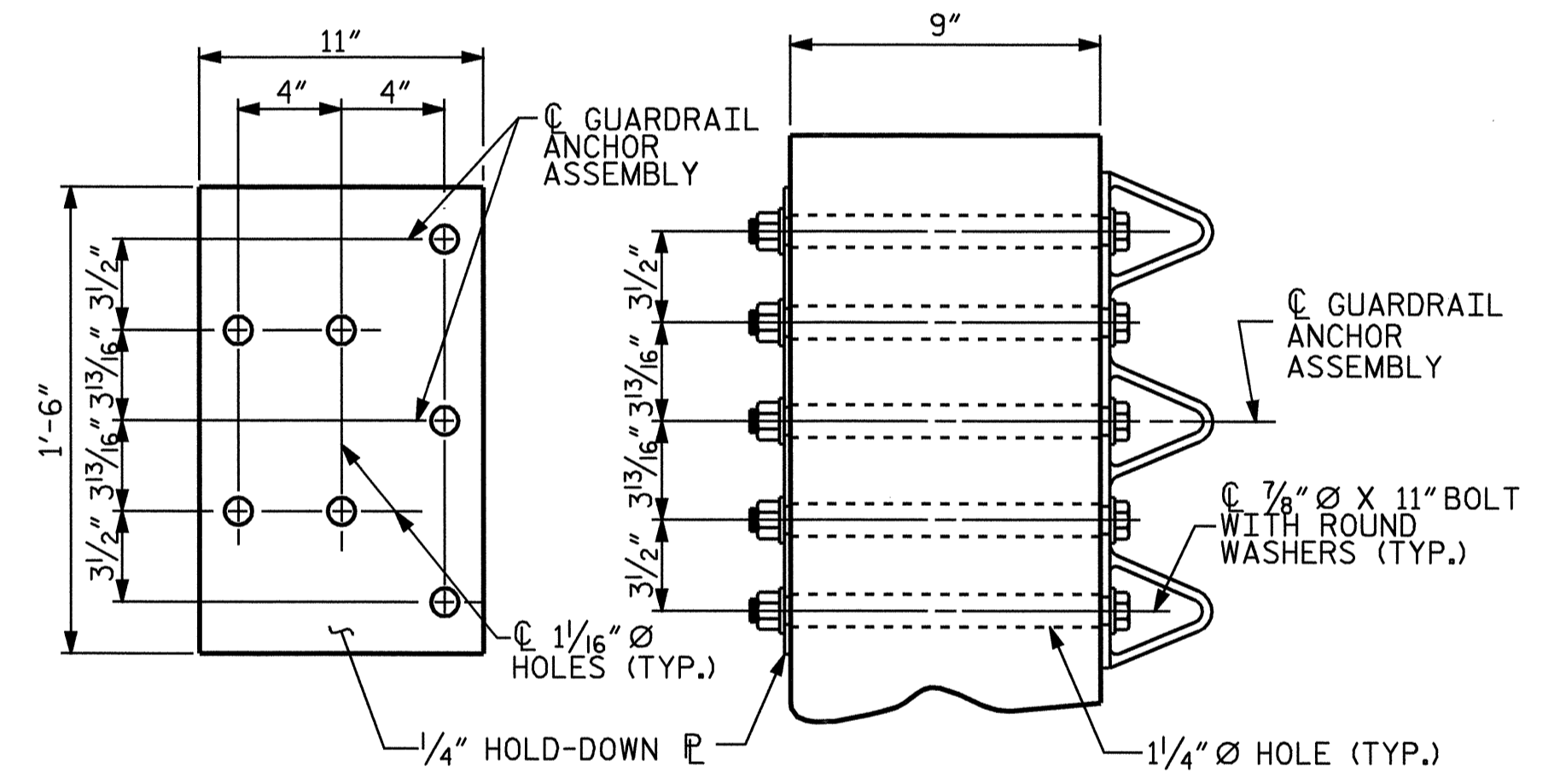
ALL BAR DIMENSIONS ARE OUT TO OUT

**NOTES**

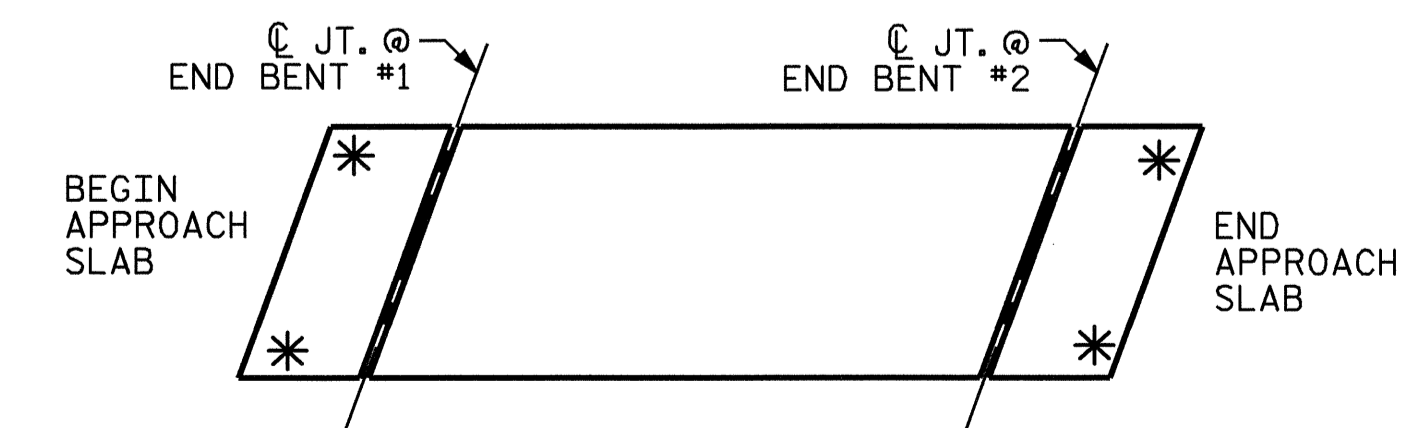
THE GUARDRAIL ANCHOR ASSEMBLY SHALL CONSIST OF A 1/4" HOLD DOWN PLATE AND 7 - 7/8" Ø BOLTS WITH NUTS AND WASHERS.  
 THE HOLD-DOWN PLATE SHALL CONFORM TO AASHTO M270 GRADE 36. AFTER FABRICATION, THE HOLD-DOWN PLATE SHALL BE HOT-DIP GALVANIZED IN ACCORDANCE WITH AASHTO M111.  
 BOLTS SHALL CONFORM TO THE REQUIREMENTS OF ASTM A307 AND NUTS SHALL CONFORM TO THE REQUIREMENTS OF AASHTO M291. BOLTS, NUTS AND WASHERS SHALL BE GALVANIZED. AT THE CONTRACTOR'S OPTION, STAINLESS STEEL BOLTS, NUTS AND WASHERS MAY BE USED AS AN ALTERNATE FOR THE 7/8" Ø GALVANIZED BOLTS, NUTS AND WASHERS. THEY SHALL CONFORM TO OR EXCEED THE MECHANICAL REQUIREMENTS OF ASTM A307. THE USE OF THIS ALTERNATE SHALL BE APPROVED BY THE ENGINEER.  
 AFTER INSTALLATION, THE EXPOSED THREAD OF THE BOLT SHALL BE BURRED WITH A SHARP POINTED TOOL.  
 THE COST OF THE GUARDRAIL ANCHOR ASSEMBLIES WITH BOLTS, NUTS AND WASHERS COMPLETE IN PLACE, SHALL BE INCLUDED IN THE LUMP SUM CONTRACT PRICE BID FOR BRIDGE APPROACH SLABS.  
 THE 1 1/4" Ø HOLES SHALL BE FORMED OR DRILLED WITH A CORE BIT. IMPACT TOOLS WILL NOT BE PERMITTED. ANY CONCRETE DAMAGED BY THIS WORK SHALL BE REPAIRED TO THE SATISFACTION OF THE ENGINEER.



**ELEVATION**



**GUARDRAIL ANCHOR ASSEMBLY DETAILS**



**SKETCH SHOWING POINTS OF ATTACHMENT**  
 \* INDICATES POINTS OF ATTACHMENT

PROJECT NO. B-4047  
BURKE COUNTY  
 STATION: 15+30.00 -L-

SHEET 6 OF 6

STATE OF NORTH CAROLINA  
 DEPARTMENT OF TRANSPORTATION  
 RALEIGH

STANDARD  
 BRIDGE APPROACH SLAB  
 DETAILS FOR PRESTRESSED  
 CONCRETE BOX BEAM  
 WITH BARRIER RAIL

REVISIONS						SHEET NO.
NO.	BY:	DATE:	NO.	BY:	DATE:	S-24
1			3			TOTAL SHEETS 24
2			4			



ASSEMBLED BY : A.V. ROYAL DATE : 8-05  
 CHECKED BY : A.R.CHESSON DATE : 8-05  
 DRAWN BY : LES 8/01 REV. 5/7/03R RWW/JTE  
 CHECKED BY : RDR 8/01