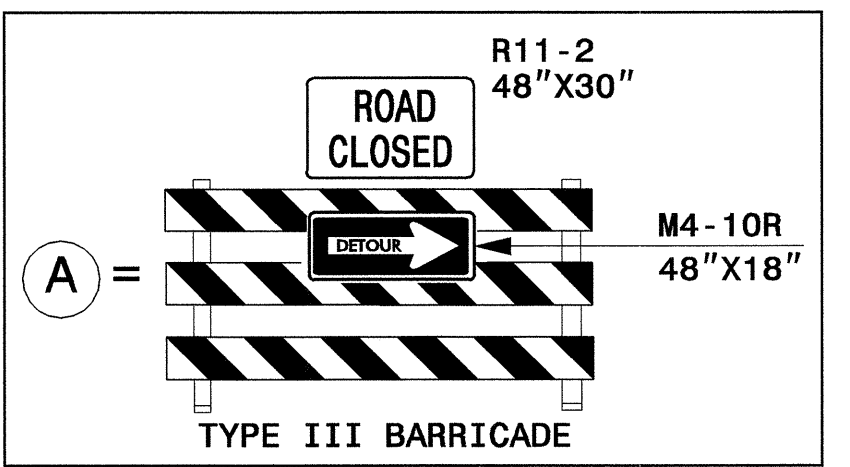
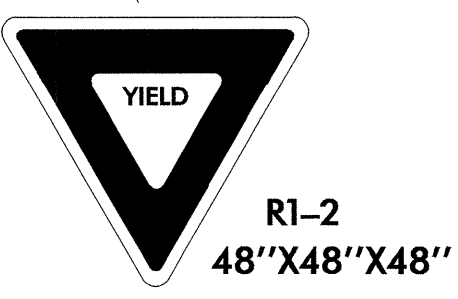
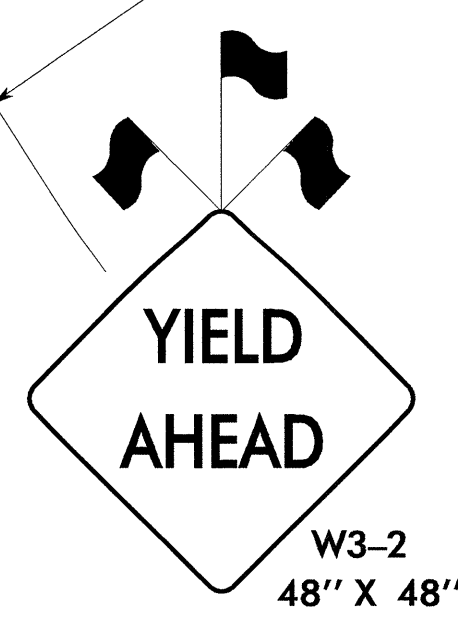


EXISTING MARKINGS

BEGIN DRUM TAPER AT BEGINNING OF BRIDGE

SEE CONSTRUCTION PLANS



SEE TCP-8 FOR OFFSITE DETOUR SIGNING DUE TO ROAD CLOSURES

APPROVED: *John S. Kite, Jr.* DATE: 12/21/04

SEAL  
NORTH CAROLINA PROFESSIONAL ENGINEER  
SEAL 022104  
ENGINEER  
JOHN S. KITE, JR.

PHASE II

SCALE: NONE		REVISIONS
DATE:		
DESIGN BY:		
REVIEWED BY:		

21-DEC-2004 07:16  
 \p1s\cct50\LD-302\TCP\REVISED TCP'S\U3302\_TC\_TCP06.dgn  
 msteeindn AT TELC2223