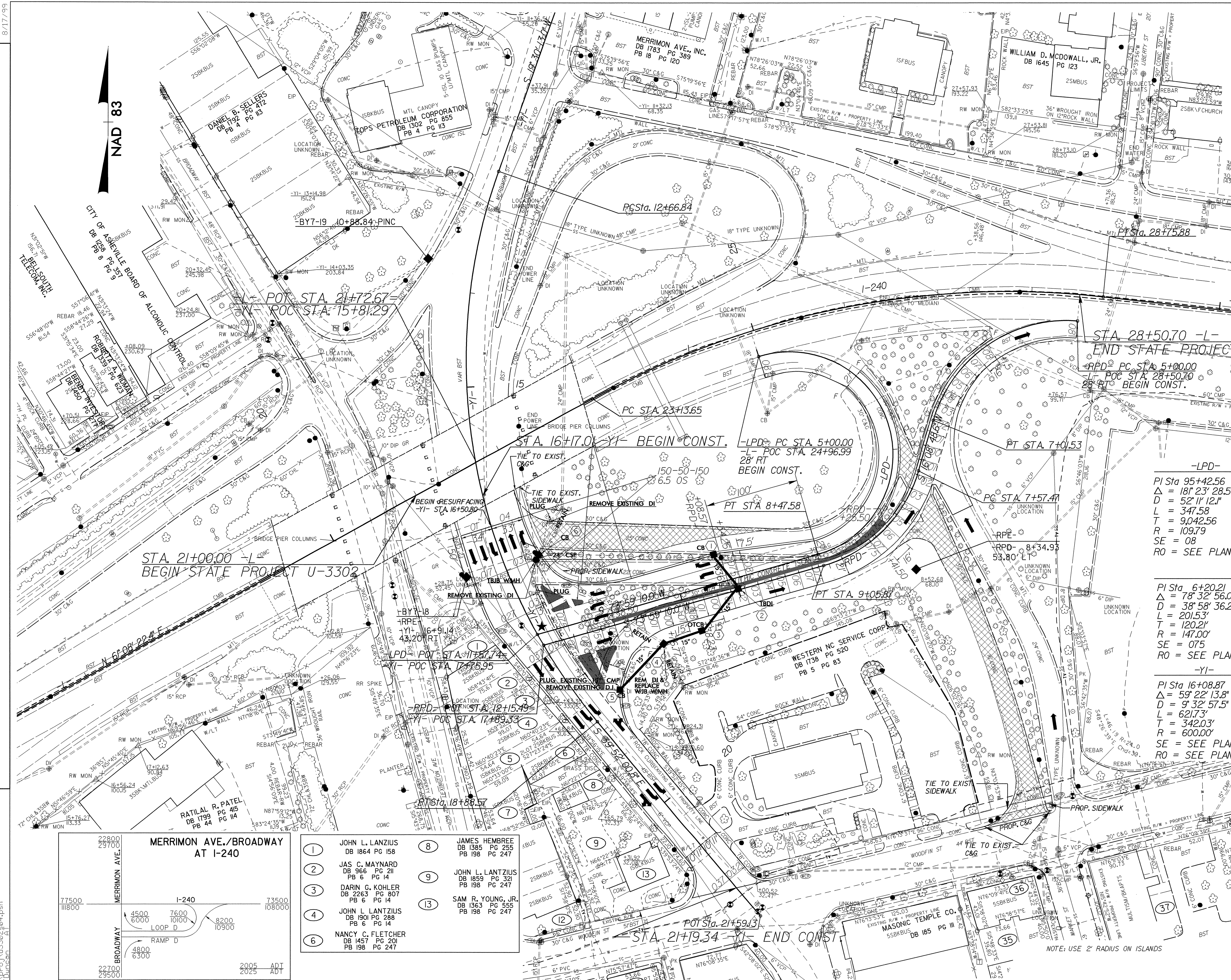
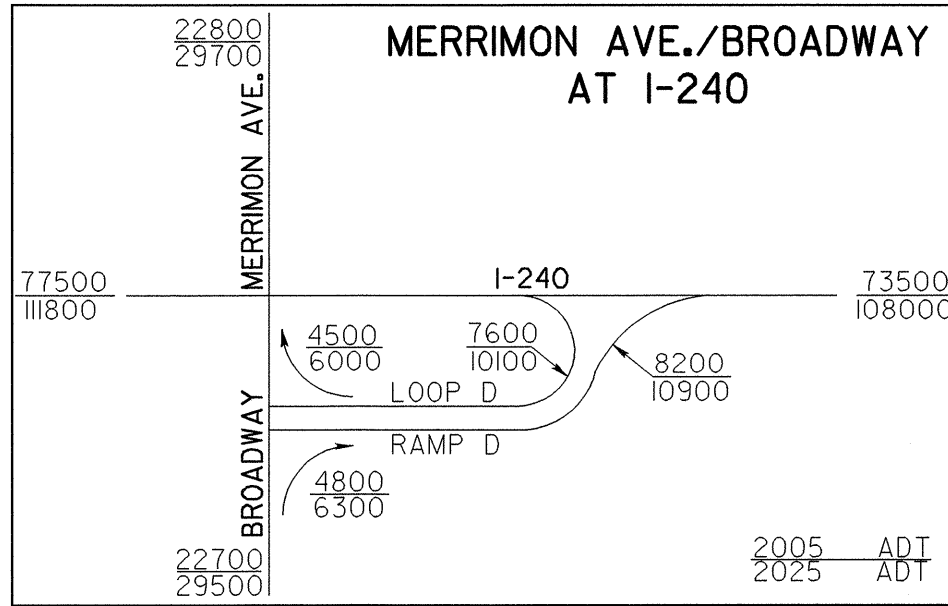


8/17/99

PROJECT REFERENCE NO. U-3302		SHEET NO. 4	
RW SHEET NO.		HYDRAULICS ENGINEER	
ROADWAY DESIGN ENGINEER		NORTH CAROLINA PROFESSIONAL SEAL 19865	
THAD F. DUNCAN		1-26-05	



<p><b>-LPD-</b></p> <p>PI Sta 95+42.56  <math>\Delta = 181' 23' 28.5''</math> (RT)  D = 52' 11' 12.1"  L = 347.58  T = 9,042.56  R = 109.79  SE = 08  RO = SEE PLANS</p>	<p><b>-L-</b></p> <p>PI Sta 26+03.92  <math>\Delta = 35' 07' 46.0''</math> (RT)  D = 6' 14' 53.4"  L = 562.24'  T = 290.27'  R = 917.00'</p>
<p><b>-RPD-</b></p> <p>PI Sta 6+20.21  <math>\Delta = 78' 32' 56.0''</math> (LT)  D = 38' 58' 36.2"  L = 201.53'  T = 120.21'  R = 147.00'  SE = 07.5  RO = SEE PLANS</p>	<p><b>-L-</b></p> <p>PI Sta 8+38.69  <math>\Delta = 57' 50' 21.4''</math> (RT)  D = 38' 58' 36.2"  L = 148.39'  T = 81.21'  R = 147.00'  SE = 08  RO = SEE PLANS</p>
<p><b>-YI-</b></p> <p>PI Sta 16+08.87  <math>\Delta = 59' 22' 13.8''</math> (LT)  D = 9' 32' 57.5"  L = 621.73'  T = 342.03'  R = 600.00'  SE = SEE PLANS  RO = SEE PLANS</p>	



- |  |   |
|--|---|
| 1 JOHN L. LANZIUS<br>DB 1864 PG 158                    | 8 JAMES HEMBREE<br>DB 1385 PG 255<br>PB 198 PG 247      |
| 2 JAS C. MAYNARD<br>DB 966 PG 211<br>PB 6 PG 14        | 9 JOHN L. LANZIUS<br>DB 1859 PG 321<br>PB 198 PG 247    |
| 3 DARIN C. KOHLER<br>DB 2263 PG 807<br>PB 6 PG 14      | 13 SAM R. YOUNG, JR.<br>DB 1363 PG 555<br>PB 198 PG 247 |
| 4 JOHN L. LANZIUS<br>DB 1901 PG 288<br>PB 6 PG 14      |   |
| 6 NANCY C. FLETCHER<br>DB 1457 PG 201<br>PB 198 PG 247 |   |

NOTE: USE 2' RADIUS ON ISLANDS

★ PROPOSED SIGNAL

FOR -YI- PROFILE SEE SHEET 5  
FOR -LPD- PROFILE SEE SHEET 5  
FOR -RPD- PROFILE SEE SHEET 5

REVISIONS

10-JAN-2005 07:27  
11-PP-01-U3302-04.psh  
TFDuncan