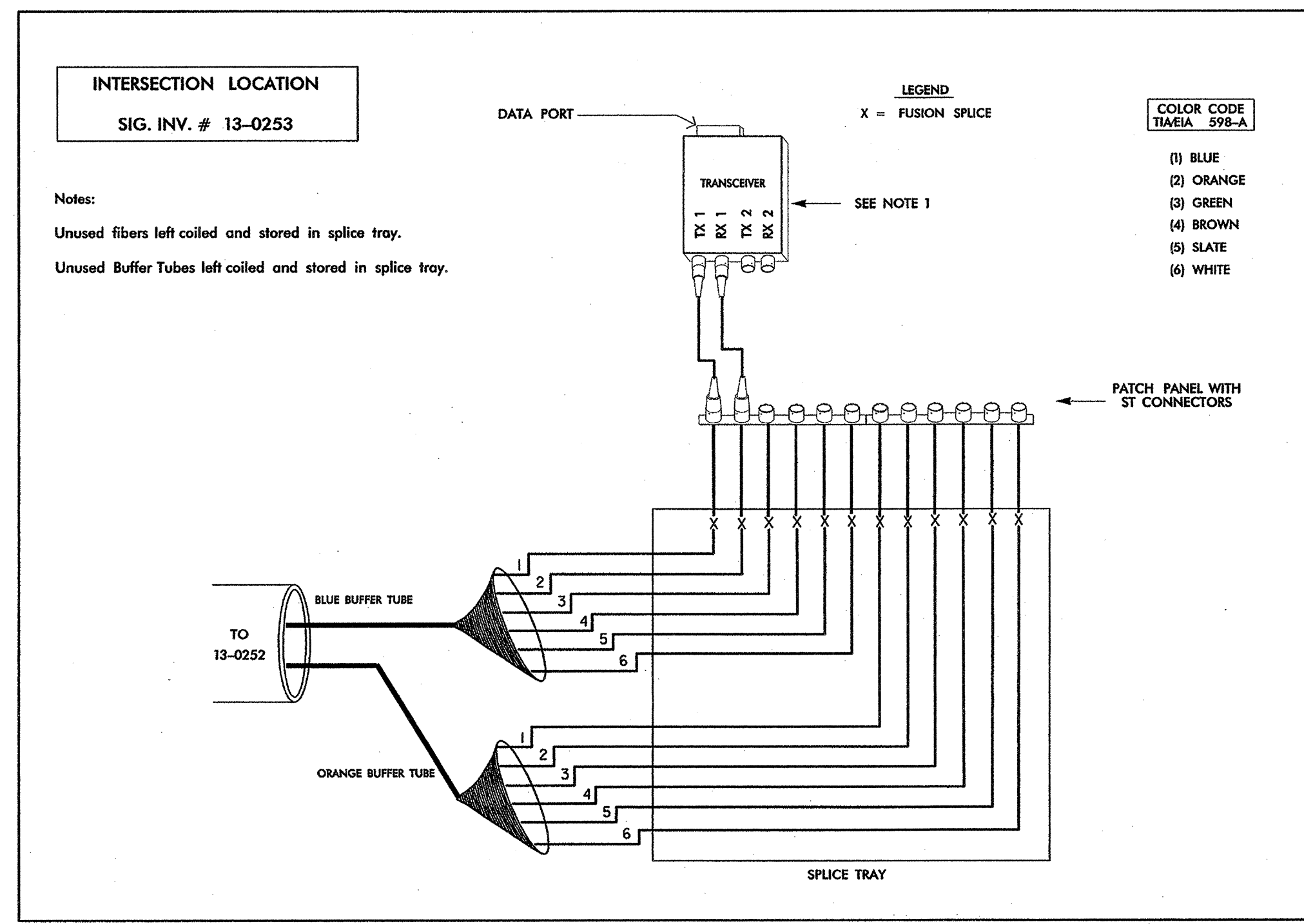
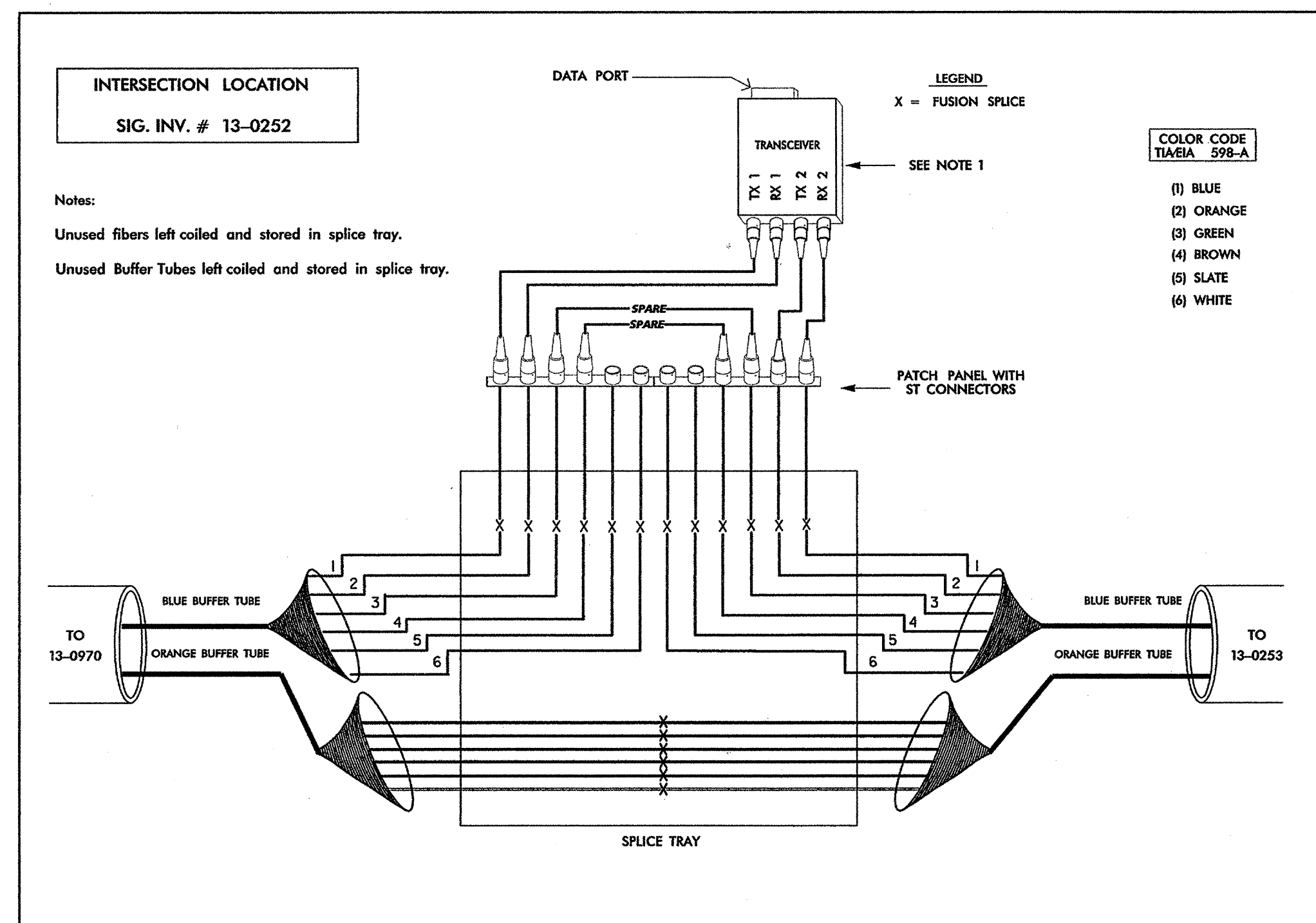
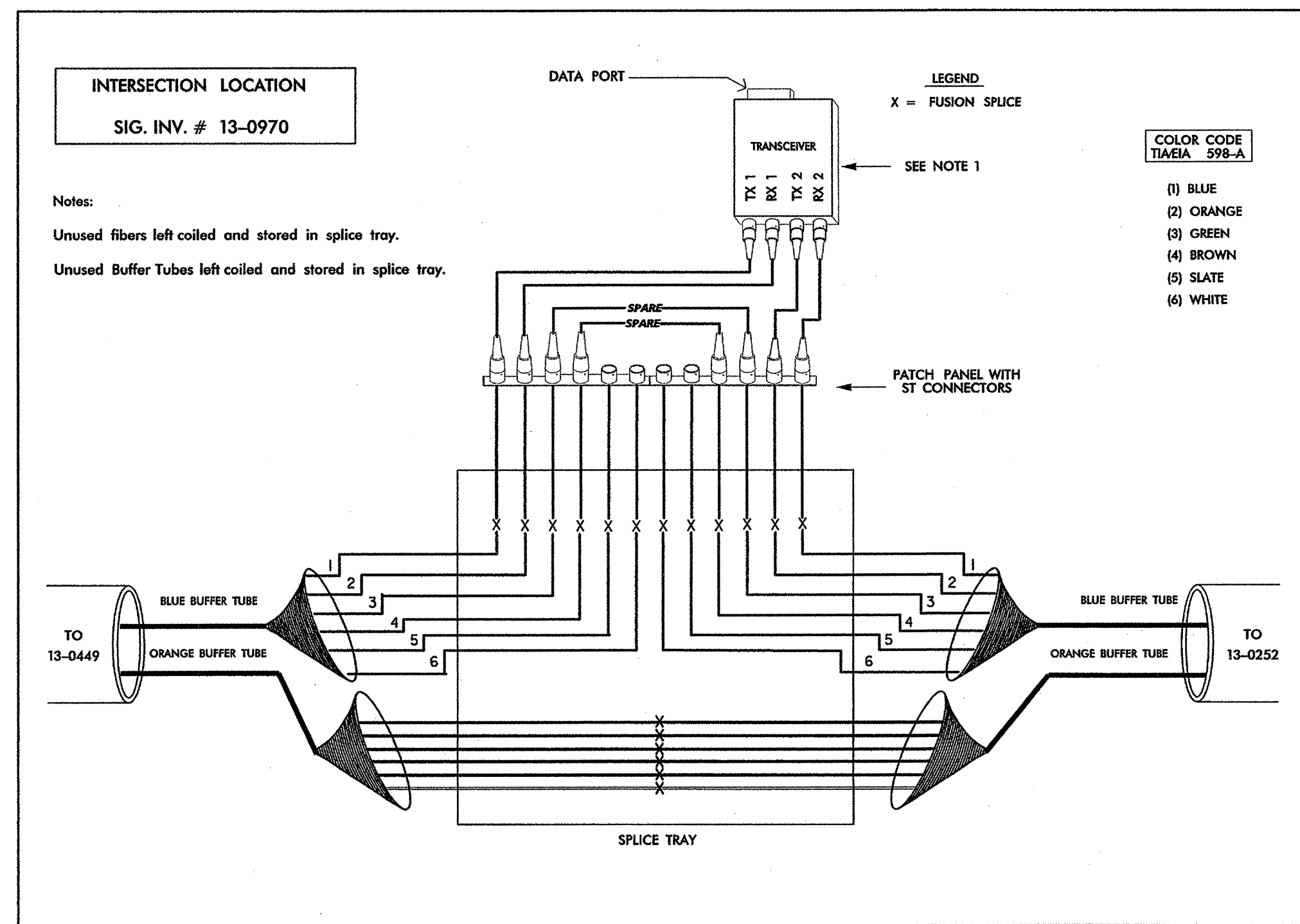
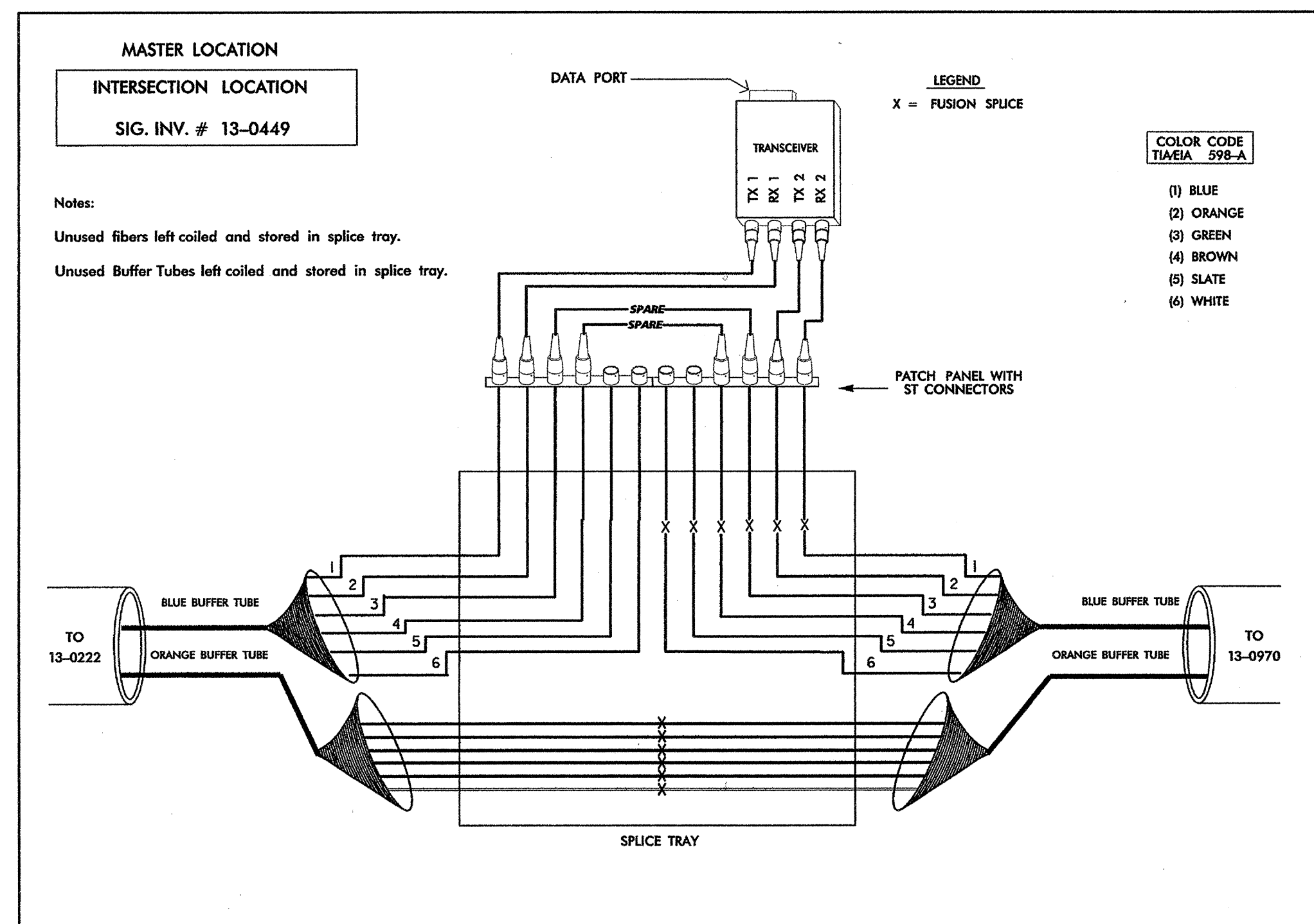


# FIBER OPTIC CABLE



**NOTES:**

1. CONTRACTOR TO PROVIDE TRANSCEIVER THAT IS IDENTICAL TO THE TRANSCEIVER USED ON THE EXISTING SYSTEM OR AN ENGINEER APPROVED EQUIVALENT.

**Mattern & Craig**  
CONSULTING ENGINEERS • SURVEYORS  
12 BROAD STREET  
ASHEVILLE, NORTH CAROLINA 28801  
(828) 254-2200  
FAX (828) 254-4562

Prepared in the Offices of:  
North Carolina State Board of Examiners  
Professional Surveyors  
122 N. McDowell St., Raleigh, NC 27603

SCALE  
0 NA

**SPLICE PLAN**  
US 25 (Merrimon Avenue)

Division 13	Buncombe County	Asheville
PLAN DATE: April 2004	REVIEWED BY: Voso	
PREPARED BY: Richardson	REVIEWED BY:	
REVISIONS	INIT.	DATE

SEAL  
NORTH CAROLINA  
PROFESSIONAL  
SEAL  
022599  
ENGINEER  
JAMES B. VOSO  
6/16/04  
SIGNATURE DATE  
FILE: 20800 SPLICE